



EXTON PROFESSIONAL OFFICE

For Lease



559 WEST UWCHLAN AVE. SUITE 220 | EXTON, PA



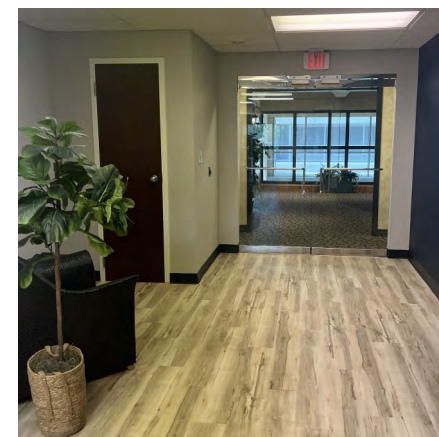
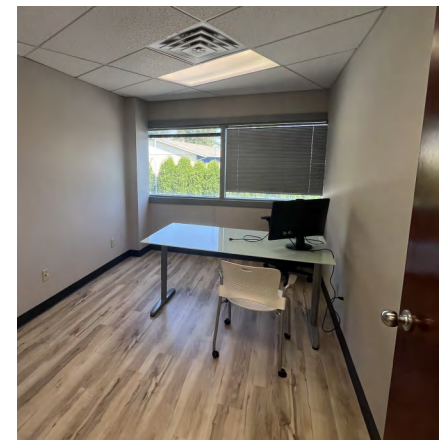
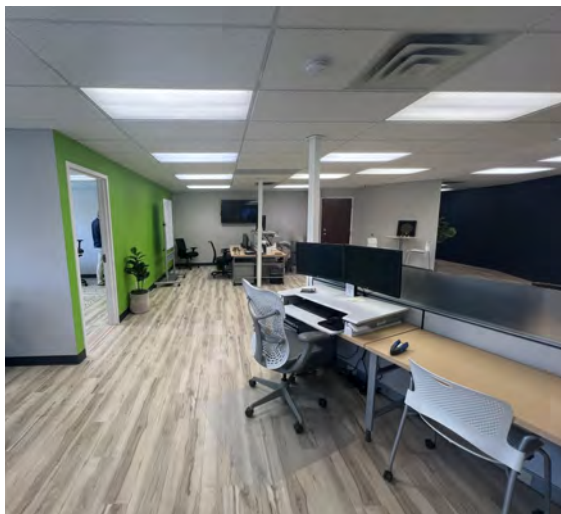
PILLAR REAL ESTATE ADVISORS

P: 484-887-8202 | www.PillarRealEstateAdvisors.com

535 N. Church Street, West Chester, PA 19380

PROPERTY HIGHLIGHTS

- +/- 2,664 SF Professional Office For Lease
- Suite includes (4) private offices, conference room, reception area, bullpen / coworking area, & kitchenette / breakroom.
- Modern Updated finishes throughout with LVP Flooring
- Abundant Natural Light
- Well maintained lobby and common restrooms
- Ample on-site shared parking
- Easy access to major thoroughfares PA Route 100, Route 113, PA Turnpike, Route 202, and Route 30



SUBLET LEASE RATE:
\$16 PSF PLUS ELECTIC

559 WEST UWCHLAN AVE. SUITE 220 | EXTON, PA



PILLAR REAL ESTATE ADVISORS

P: 484-887-8202 | www.PillarRealEstateAdvisors.com

535 N. Church Street, West Chester, PA 19380



559 WEST UWCHLAN AVE. SUITE 220 | EXTON, PA



PILLAR REAL ESTATE ADVISORS

P: 484-887-8202 | www.PillarRealEstateAdvisors.com

535 N. Church Street, West Chester, PA 19380



EXTON PROFESSIONAL OFFICE

For Lease

PILLAR REAL ESTATE ADVISORS

BRINGING EXPERIENCE, PROFESSIONALISM, AND INTEGRITY
TO COMMERCIAL REAL ESTATE BROKERAGE

JAKE JEWELL

JJEWELL@PILLARREALESTATEADVISORS.COM

484-887-8202 | Ext. 105

ANDREW CARLINO

ACARLINO@PILLARREALESTATEADVISORS.COM

484-887-8202 | Ext. 103

"The information contained in this document has been obtained from sources believed reliable. While Pillar Real Estate Advisors, LLC does not doubt its accuracy, Pillar Real Estate Advisors, LLC. has not verified it and makes no guarantee, warranty or representation about it. It is your responsibility to independently confirm its accuracy and completeness. Any projections, opinions, assumptions or estimates used are for example only and do not represent the current or future performance of the property. The value of this transaction to you depends on several factors which should be evaluated by your tax, financial and legal advisors to determine to your satisfaction the suitability of the property for your needs.

Photos herein are the property of their respective owners and use of these images without the express written consent of the owner is prohibited."

559 WEST UWCHLAN AVE. SUITE 220 | EXTON, PA



PILLAR REAL ESTATE ADVISORS

P: 484-887-8202 | www.PillarRealEstateAdvisors.com

535 N. Church Street, West Chester, PA 19380