



FOR
SALE
OR
LEASE

Leor Hemo

President & Chief Executive

856.797.1919 x100

215.514.1750

Leor.Hemo@VantageRES.com

Emily Stein

Managing Director

& Director of Healthcare Services

856.797.1919 x110

609.457.9816

Emily.Stein@VantageRES.com

856.797.1919
VantageRES.com

1873 Marlton Pike, East, Suite 1C
Cherry Hill, NJ 08003



BANK BRANCH WITH A DRIVE-THRU
6 HADDONFIELD-BERLIN ROAD, VOORHEES, NJ 08043



PROPERTY HIGHLIGHTS

Asking Lease Rate: Call for Details **Signage:** Facade & Monument
Asking Sale Price: Call for Details **Parking:** +/- 25 Spaces
SF: +/- 2,628 SF **Zoning:** Business

BUILDING DETAILS:

+ 2,628 SF bank building is easily accessible from all major Southern NJ thoroughfares including I-295, the NJ Turnpike, Evesham and Springdale Roads, and Route 73. Ideally used as a bank due to its layout, location, and existing 3-lane drive-thru

+ Property is newly updated and exceptionally well maintained

+ Monument sign and facade sign available, providing excellent branding opportunities

LOCATION & AREA:

+ Strategically located at a signalized 5-point intersection on a heavily trafficked Haddonfield-Berlin Road, the building has maximum visibility and accessibility to thousands of passing vehicles daily

+ Located among high demographic residential neighborhoods, the building is nearby an array of amenities including ACME Markets, Starbucks, the Legacy Club, and Wawa among other retail, medical, and service-type complexes



FOR SALE OR LEASE

6 HADDONFIELD-BERLIN ROAD, VOORHEES, NJ 08043

856.797.1919

VantageRES.com



KEY	
■	1 MILE
■	3 MILE
■	5 MILE

DEMOGRAPHICS

POPULATION			
MILE	1 MILE	3 MILE	5 MILE
AVERAGE 2023	12,694	83,321	243,650
PROJECTED 2028	12,707	83,101	243,056

HOUSEHOLDS			
MILE	1 MILE	3 MILE	5 MILE
AVERAGE 2023	5,159	32,205	96,581
PROJECTED 2028	5,164	32,112	96,334

INCOME			
MILE	1 MILE	3 MILE	5 MILE
AVERAGE INCOME	\$120,366	\$128,749	\$119,613
MEDIAN INCOME	\$96,965	\$100,369	\$94,817

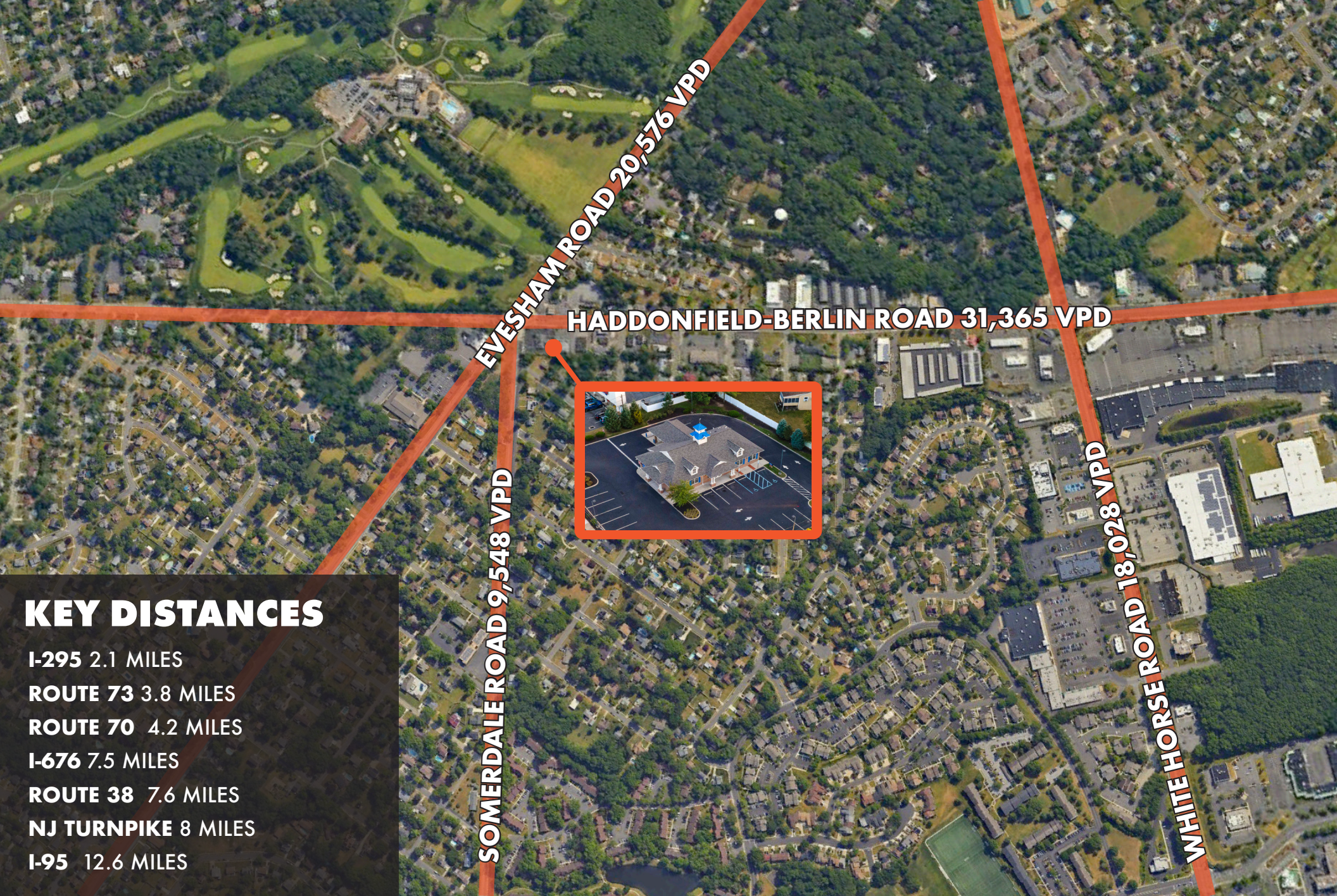


FOR SALE OR LEASE

6 HADDONFIELD-BERLIN ROAD, VOORHEES, NJ 08043

856.797.1919

VantageRES.com



KEY DISTANCES

- I-295 2.1 MILES
- ROUTE 73 3.8 MILES
- ROUTE 70 4.2 MILES
- I-676 7.5 MILES
- ROUTE 38 7.6 MILES
- NJ TURNPIKE 8 MILES
- I-95 12.6 MILES

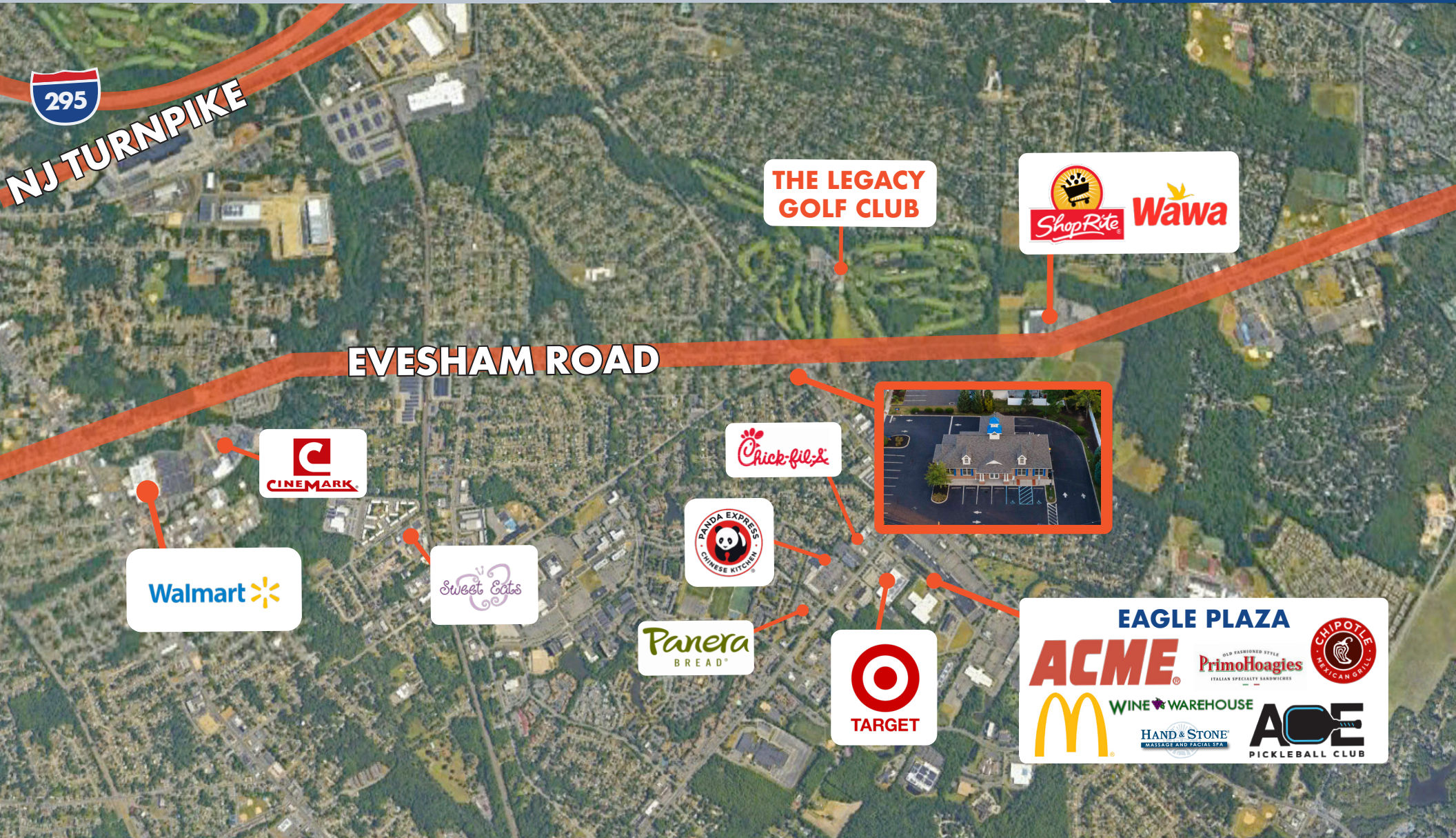
FOR SALE OR LEASE

6 HADDONFIELD-BERLIN ROAD, VOORHEES, NJ 08043

856.797.1919
VantageRES.com



NEARBY AMENITIES



856.797.1919
VantageRES.com

FOR SALE OR LEASE

6 HADDONFIELD-BERLIN ROAD, VOORHEES, NJ 08043