



Grant - Murray
REAL ESTATE, LLC
COMMERCIAL AND INVESTMENT BROKERAGE

150 N. McPherson Church Rd
Fayetteville, NC 28303
www.grantmurrayre.com



RETAIL PROPERTY FOR LEASE

SOUTHSTAR CENTRE

3069 Cumberland Rd, Fayetteville, NC 28306

for more information

SUSAN EVANS

Broker

O: 910.829.1617 x208

C: 919.920.2140

susan@grantmurrayre.com



OFFERING SUMMARY

Available SF:	1,300 SF
Lease Rate:	\$1,500.00 per month (MG)
Lot Size:	1.76 Acres
Year Built:	1998
Building Size:	8,645
Zoning:	C3
Parking:	34 spaces
Traffic Count:	18,000

PROPERTY OVERVIEW

The SouthStar Center is an 8,600+ SF strip center located in southwest Fayetteville along Cumberland Rd. The center has one vacant unit. Each unit is 1,300 square feet and costs \$ 1,500 per month. The space has an open floor plan and an ADA-compliant restroom in each suite. This is a great location for many types of businesses, like a nail salon, retail, several office users, etc.

LOCATION OVERVIEW

The shopping center is located along Cumberland Rd close to Owen Dr and Natal St. The traffic count along Cumberland Rd is 18,000 vehicles per day (NCDOT, 2018). Within a three mile radius of the center the population is nearly 50,000; daytime population over 73,000; and an average household income of over \$62,000.

for more information

SUSAN EVANS
 Broker
 O: 910.829.1617 x208
 C: 919.920.2140
 susan@grantmurrayre.com



AVAILABLE SPACES

LEASE TYPE | MG

TOTAL SPACE | 1,300 SF

LEASE TERM | Negotiable

LEASE RATE | \$1,500.00 per month



SUITE	TENANT	SIZE (SF)	LEASE TYPE	LEASE RATE
Suite 105	Available	1,300 SF	Modified Gross	\$1,500 per month

for more information

SUSAN EVANS
 Broker
 O: 910.829.1617 x208
 C: 919.920.2140
susan@grantmurrayre.com



Grant - Murray
REAL ESTATE, LLC
COMMERCIAL AND INVESTMENT BROKERAGE

SouthStar Centre
3069 CUMBERLAND RD, FAYETTEVILLE, NC 28306

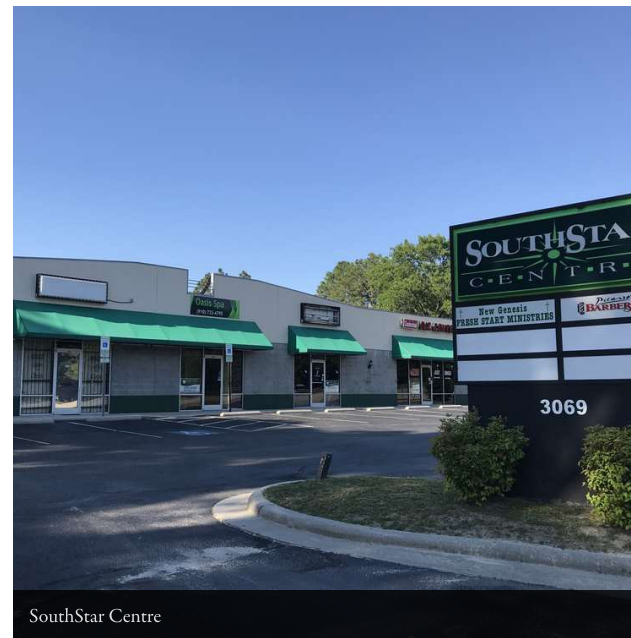
ADDITIONAL PHOTOS



Suite 105



SouthStar Centre



SouthStar Centre

for more information

SUSAN EVANS

Broker

O: 910.829.1617 x208

C: 919.920.2140

susan@grantmurrayre.com



LOCATION MAPS



for more information

SUSAN EVANS
 Broker
 O: 910.829.1617 x208
 C: 919.920.2140
 susan@grantmurrayre.com

APPLY NOW!

3069 Cumberland rd , Fayetteville , NC 28301

Susan Evans



(919) 920-2140



susan@grantmurrayre.com

You will submit your:

- Rental Application
- Credit Report & Score*
- Criminal Background Check*
- Eviction Related Proceedings*

*Reports by TransUnion SmartMove.



Apply today by scanning the QR code above or visiting the following link

<https://apply.link/3Rgxxgky>



rentspree

Screening with RentSpree is a no-brainer

1. No damage to credit score (Soft credit inquiry)
2. Screening reports are instantly pulled and shared
3. Sensitive personal information is protected
4. The application is saved making it easier to re-apply

If you have any questions or issues, contact support@rentspree.com.