

## DESIRABLE SIERRA VISTA SOUTH RENO LOCATION

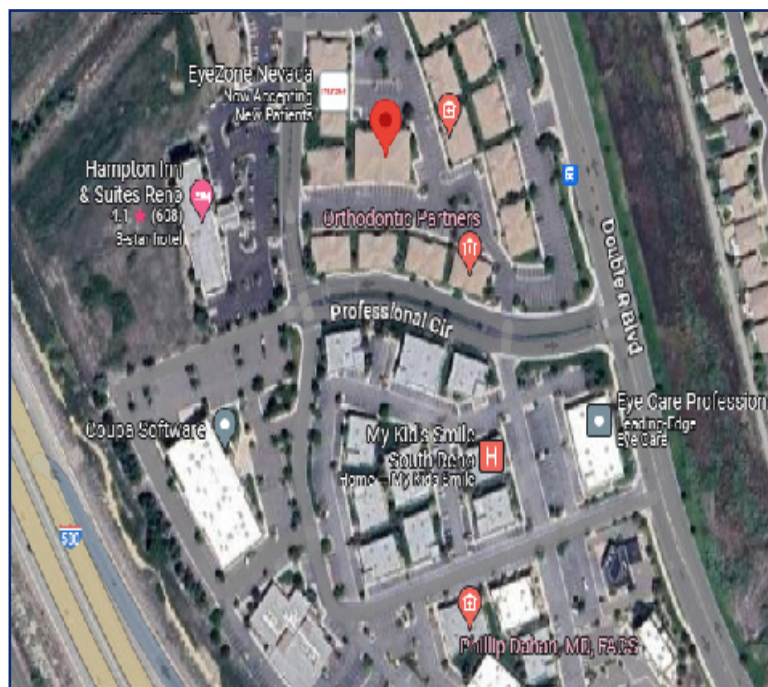


### PROPERTY OVERVIEW

**Available** 7,850 Square Feet

**Price:** **\$2,250,000**

- Highlights:**
- Great owner-user/ investment opportunity
  - 75% Occupied with 1,900 customizable +/- sq. ft. available to lease or use
  - Single story, free standing building
  - Excellent location with easy access from Double R and 395 Hwy



**MIKE VAN BLARICOM**  
PRINCIPAL  
MIKEV@ARCHCRESTNV.COM  
C: 775.250.9531  
NV LIC S.0066330

**KEVIN ANNIS, SIOR, CCIM**  
BROKER/PRINCIPAL  
KANNIS@ARCHCRESTNV.COM  
C: 775.742.2539  
NV LIC B.1000617.LLC

**MELANIE STEWART**  
TRANSACTION COORDINATOR  
MSTEWART@ARCHCRESTNV.COM  
P: 775.852.9800 x 205  
NV LIC S.0061263

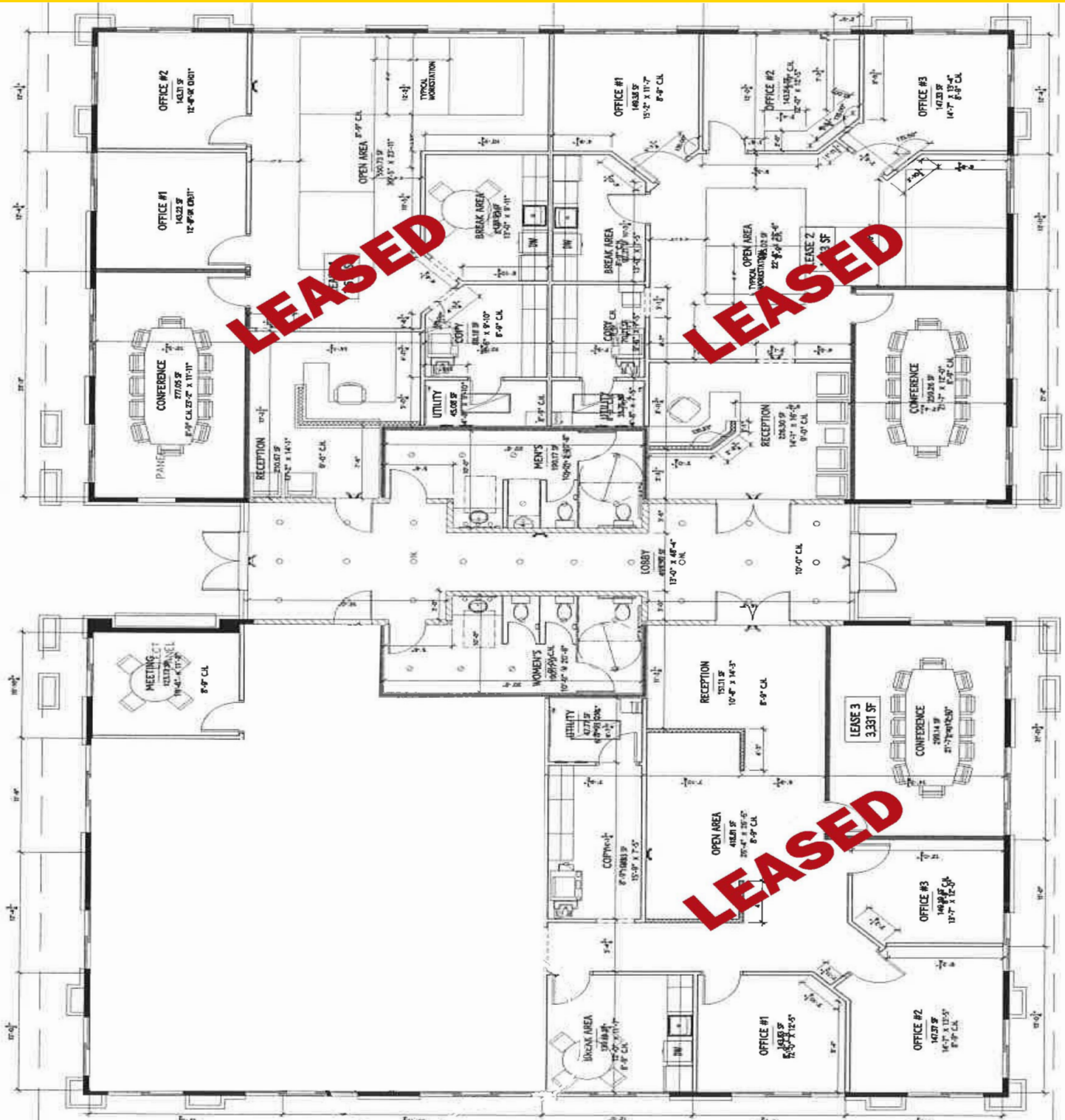
**775.852.9800**

[WWW.ARCHCRESTNV.COM](http://WWW.ARCHCRESTNV.COM)

ArchCrest Commercial Partners • 5560 Longley Lane, Suite 100, Reno, NV 89511 • Fax: (775) 850-4251

The information contained herein was obtained from sources believed reliable; however, ArchCrest Commercial Partners makes no guarantees, warranties, or representations as to the completeness or accuracy thereof. The presentation of this property is submitted subject to errors, omissions, change of price or terms prior to sale or lease, or withdrawal without notice.

## DESIRABLE SIERRA VISTA SOUTH RENO LOCATION



<p><b>MIKE VAN BLARICOM</b> PRINCIPAL MIKEV@ARCHCRESTNV.COM C: 775.250.9531 NV LIC S.0066330</p>	<p><b>KEVIN ANNIS, SIOR, CCIM</b> BROKER/PRINCIPAL KANNIS@ARCHCRESTNV.COM C: 775.742.2539 NV LIC B.1000617.LLC</p>	<p><b>MELANIE STEWART</b> TRANSACTION COORDINATOR MSTEWART@ARCHCRESTNV.COM P: 775.852.9800 x 205 NV LIC S.0061263</p>	<p><b>775.852.9800</b> <a href="http://WWW.ARCHCRESTNV.COM">WWW.ARCHCRESTNV.COM</a></p>
--	--	---	---