

# FOR SALE OR LEASE: +/- 2,522 SF MEDICAL OFFICE SPACE

1902 MEETING COURT

WILMINGTON, NEW HANOVER COUNTY, NC





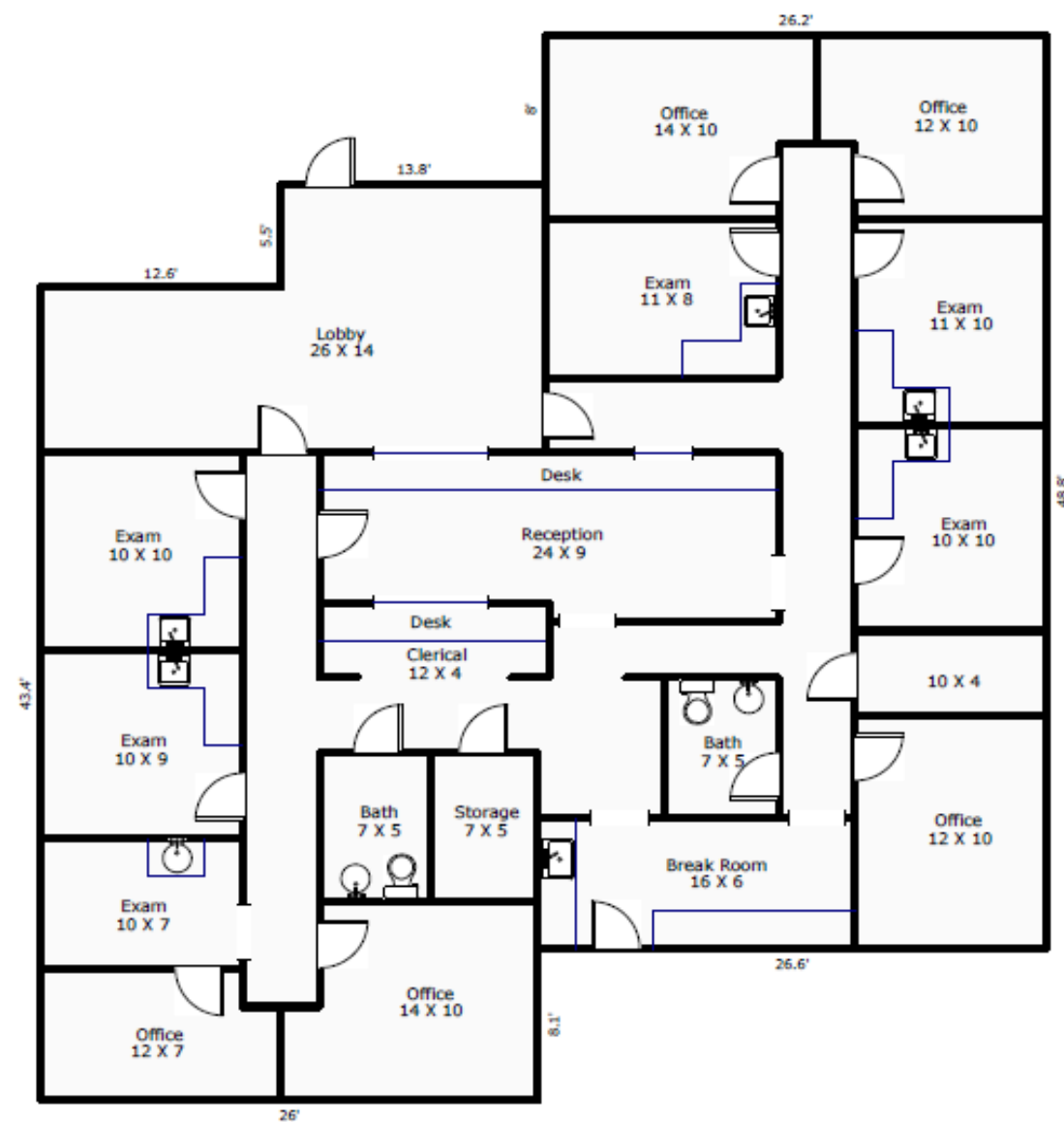
## SUMMARY

ADDRESS	<b>1902 Meeting Court</b> Wilmington, NC   New Hanover County
AVAILABLE SF	± 2,522 SF
LEASE RATE	\$4,195.00/ Month (Modified Gross)
SALE PRICE	\$695,000
ZONING	O&I-1 (Office & Industrial)   City of Wilmington
PARCEL ID	R06007-002-010-100
DESCRIPTION	± 2,522 SF of medical space located in Hospital Plaza Office Park, in the heart of the medical community, almost directly across 17th Street from New Hanover Regional Medical Center. Space consists of 6 exam rooms, 2 offices, conference room, lab, 3 closets, large reception area, receptionist's desk area, 2 nurse's stations and kitchenette.

## PHOTOS



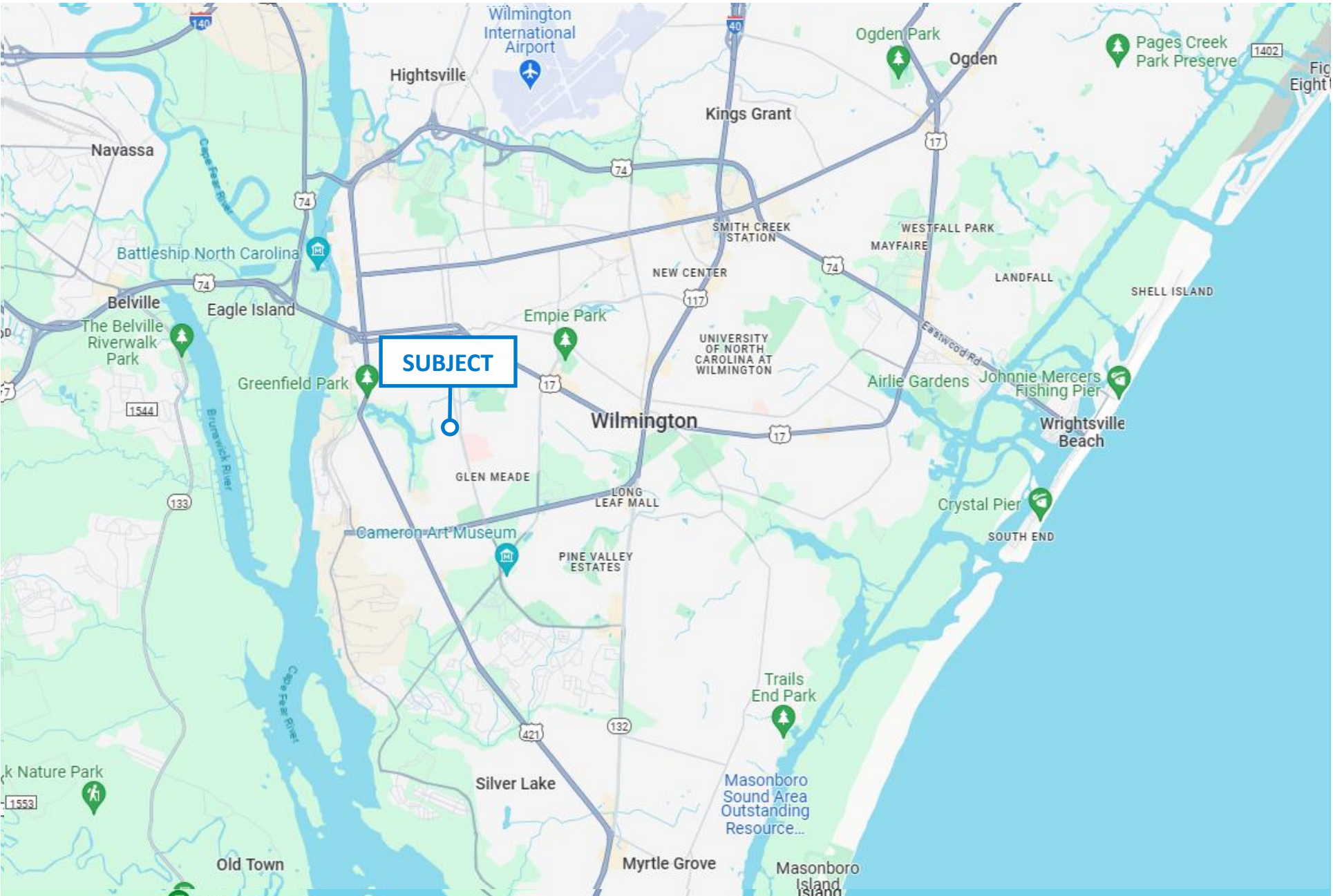
FLOOR PLAN



AERIAL MAP



LOCATION MAP





**WILL LEONARD, SIOR**

Senior Vice President

910.344.1015 direct

910.233.5351 cell

wleonard@capefearcommercial.com



102 Autumn Hall Drive | Suite 210 | Wilmington, NC 28403

[capefearcommercial.com](http://capefearcommercial.com)

© 2023 Cape Fear Commercial, LLC. All rights reserved. The information contained in the following Marketing Brochure is proprietary and strictly confidential. It is intended to be reviewed only by the party receiving it from Cape Fear Commercial and should not be made available to any other person or entity without the written consent of Cape Fear Commercial. This Marketing Brochure has been prepared to provide summary, unverified information to prospective purchasers, and to establish only a preliminary level of interest in the Subject property. The information contained herein is not a substitute for a thorough due diligence investigation. Cape Fear Commercial has not made any investigation, and makes no warranty or representation, with respect to the income or expenses for the Subject property, the future projected financial performance of the property, the size and square footage of the property and improvements, the presence or absence of contaminate substances, PCB's or asbestos, the compliance with State and Federal regulations, the physical condition of the improvements thereon, or the financial condition or the business prospects of any tenant's plans or intentions to continue its occupancy of the Subject property. The information contained in this Marketing Brochure has been obtained from sources we believe to be reliable; however, Cape Fear Commercial has not verified, and will not verify, any of the information contained herein, nor has Cape Fear Commercial conducted any investigation regarding these matters and makes no warranty or representation whatsoever regarding the accuracy or completeness of the Information provided. All potential buyers must take appropriate measures to verify all of the information set forth herein.