



**535 N HWY 101**

**PRIME COASTAL OFFICE SPACE | SOLANA BEACH**

**BRET MORRISS**

619-308-6787

[bret.morriss@cast-cap.com](mailto:bret.morriss@cast-cap.com)

License #02037074

**CARRIE DUDA**

(619) 489-5373

[carrie.duda@cast-cap.com](mailto:carrie.duda@cast-cap.com)

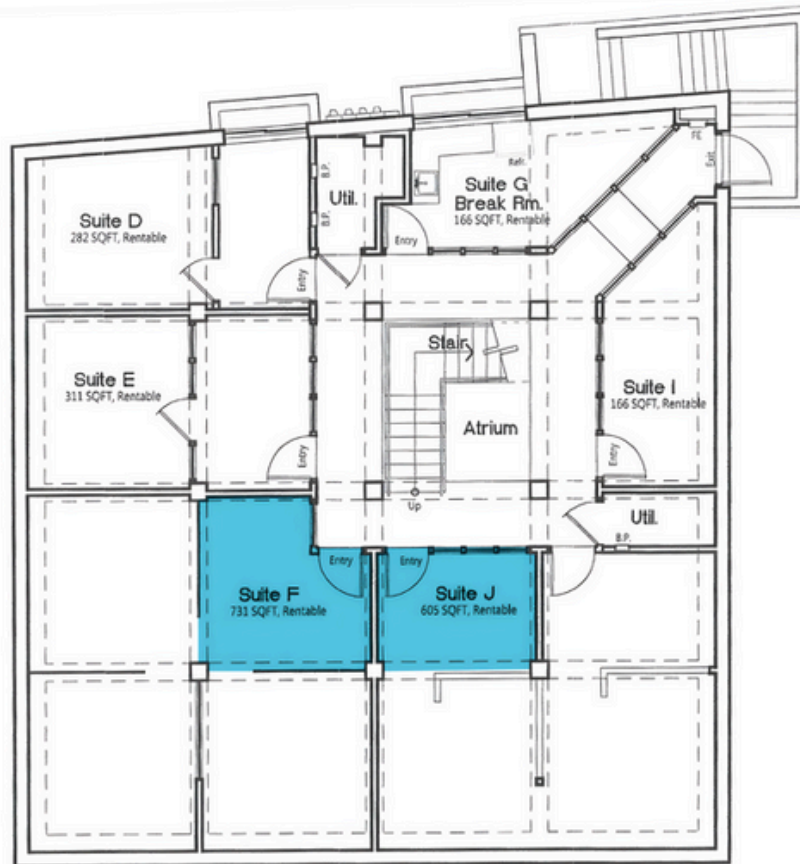
CA License #02199169

**CAST**  
CAPITAL PARTNERS



# PROPERTY HIGHLIGHTS

- **Address:** 535 N Hwy 101, Solana Beach
- **Year Built:** 1980
- **RBA:** 5,152 SF
- **Stories:** 2
- **Property Type:** Office/Medical
- **Flexible** configuration of office suites
- **Parking:** On-site, 1.16/1,000 SF





# AVAILABLE SPACE

## SUITE F

Size	731 RSF
Asking Rate	\$5.50/RSF FSG
Available	Now
Parking	On-site

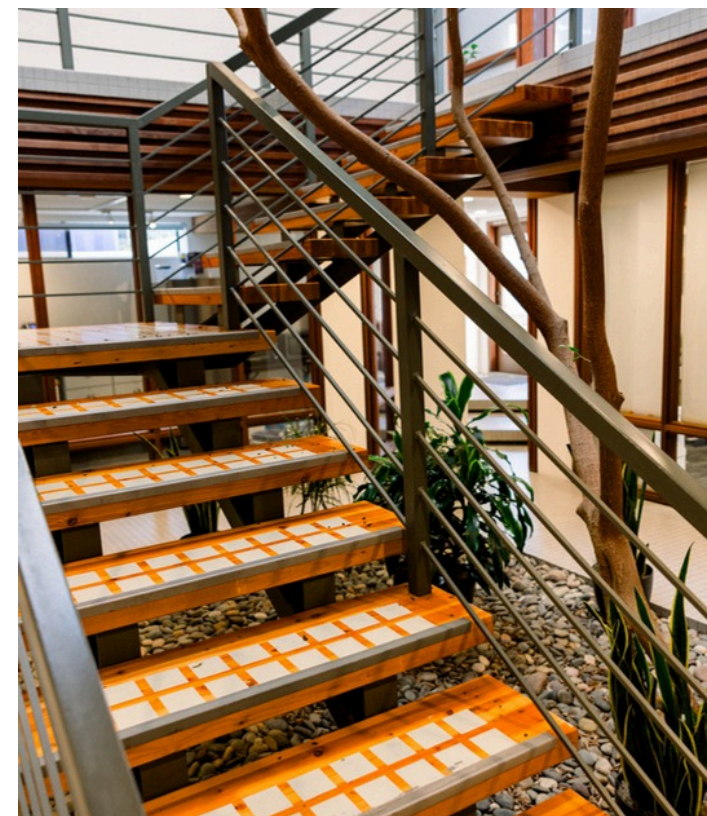
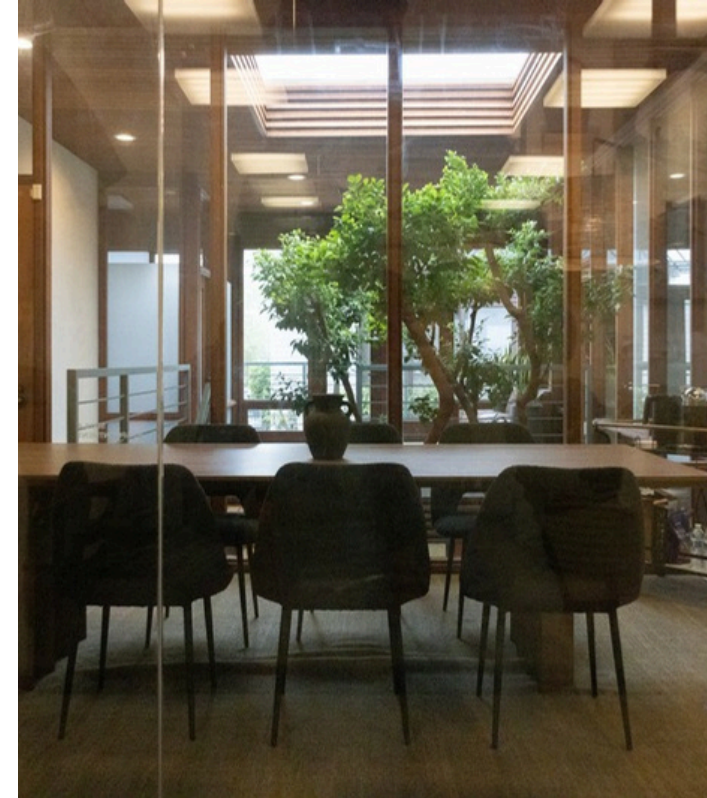
## SUITE J

Size	605 RSF
Asking Rate	\$5.50/RSF FSG Open layout with option to divide into two suites
Available	Now
Parking	On-site

Shared conference room available on a limited-use basis









**SITE**

Seascape Surf Beach

N HWY 101



LOMAS SANTA FE DR

STEVENS AVE

Fletcher Cove Beach



Tide Beach Park



S HWY 101



Lana

RUSTIC ROOT

CTZN

Cedros Ave Design District

**AERIAL MAP**





# CAST

CAPITAL PARTNERS

5090 Shoreham Place Suite 100  
San Diego, CA 92122  
[information@cast-cap.com](mailto:information@cast-cap.com)  
619-308-6680

[www.Cast-Cap.com](http://www.Cast-Cap.com)

## **BRET MORRISS**

619-308-6787  
[bret.morriss@cast-cap.com](mailto:bret.morriss@cast-cap.com)  
License #02037074

## **CARRIE DUDA**

(619) 489-5373  
[carrie.duda@cast-cap.com](mailto:carrie.duda@cast-cap.com)  
CA License #02199169

Copyright ©2025 CAST Capital Partners. All rights reserved. The information contained herein was obtained from sources deemed reliable. No warranties or representations, expressed or implied, are made as to the accuracy of the information contained herein, and same is submitted subject errors, omissions, change of price, rental or other conditions, withdrawal without notice, and to any special listing conditions imposed by our principals. This information is given with the understanding that all negotiations relating to the purchase, renting or leasing of the property described herein shall be conducted through CAST Capital Partners.