

# LAND FOR SALE

311 Hwy 6E Oxford, Mississippi 38655

# TREZEVANT

REALTY CORPORATION



Some call it a dream. You can call it, *YOURS..*

## Property Information:

- Direct access to Highway 6 - Approx. 2000 ft of road frontage
- Zoned R2
- Land Not Divisible
- Also includes house(s) on parcels that are currently occupied - vacancy as arranged
- Oxford School District
- Minutes from the Historic Oxford Square and University of MS Campus

## Demographics / Trade Area Stats:

- **26,801** Oxford MS Population (2024, est.)
- 2024 Traffic Counts: **18,000**
- 2023 Median Age: **30.6**
- 2025 University of MS Enrollment - **25,222**

**+/- 306 acres**

**\$5,508,000**

**ABNER WHITE**

(662) 816-4951

abner@trezevantrealty.com

## TREZEVANT REALTY CORPORATION

9063 Corporate Gardens Drive

Germantown, TN 38138

(901) 755-6040

www.trezevantrealty.com



**JOHN TREZEVANT**

(901) 277-5180

jt@trezevantrealty.com

ALTHOUGH THIS INFORMATION HAS BEEN OBTAINED FROM SOURCES, WHICH WE BELIEVE TO BE RELIABLE, WE DO NOT GUARANTEE ITS ACCURACY, AND IT MAY BE INCOMPLETE OR CONDENSED. THIS IS FOR INFORMATIONAL PURPOSES ONLY AND IS NOT INTENDED AS AN OFFER OR SOLICITATION WITH RESPECT TO THE PURCHASE, SALE OR LEASE OF ANY PROPERTY. ALL HEREIN LISTED OR REFERENCED PROPERTIES ARE SUBJECT TO AVAILABILITY AND CHANGE IN PRICE AND/OR RATE AND MAY BE WITHDRAWN OR RETRACTED WITHOUT NOTICE OR CAUSE AND WITHOUT LIABILITY TO ANY PARTY INVOLVED. CHANGES IN ANY ASSUMPTION(S) OR CONDITION(S) MAY HAVE A MATERIAL EFFECT ON PROJECTED RESULTS OR VALUES. THIS MESSAGE IS INTENDED FOR THE USE OF THE INDIVIDUAL OR ENTITY TO WHICH IT IS ADDRESSED AND MAY CONTAIN INFORMATION THAT IS PRIVILEGED, CONFIDENTIAL AND EXEMPT FROM DISCLOSURE UNDER APPLICABLE LAW. IF THE READER OF THIS MESSAGE IS NOT THE INTENDED RECIPIENT, EMPLOYEE OR AGENT RESPONSIBLE TO DELIVER IT TO THE INTENDED RECIPIENT, YOU ARE HEREBY NOTIFIED THAT READING, DISSEMINATING, DISTRIBUTING OR COPYING THIS COMMUNICATION IS STRICTLY PROHIBITED.

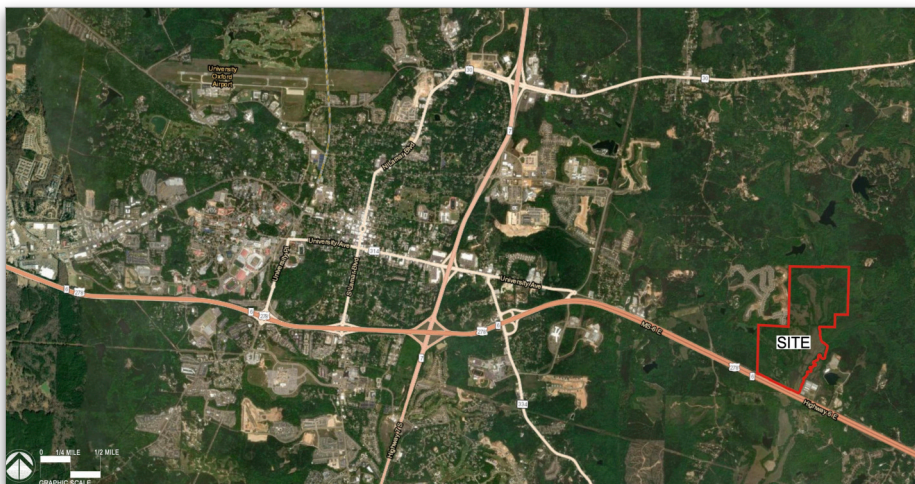


# LAND FOR SALE

311 Hwy 6E Oxford, Mississippi 38655

# TREZEVANT

REALTY CORPORATION



**+/- 306 acres**  
**\$5,508,000**

**ABNER WHITE**

(662) 816-4951

[abner@trezevantrealty.com](mailto:abner@trezevantrealty.com)

**TREZEVANT REALTY CORPORATION**

9063 Corporate Gardens Drive

Germantown, TN 38138

(901) 755-6040

[www.trezevantrealty.com](http://www.trezevantrealty.com)



**JOHN TREZEVANT**

(901) 277-5180

[jt@trezevantrealty.com](mailto:jt@trezevantrealty.com)

ALTHOUGH THIS INFORMATION HAS BEEN OBTAINED FROM SOURCES, WHICH WE BELIEVE TO BE RELIABLE, WE DO NOT GUARANTEE ITS ACCURACY, AND IT MAY BE INCOMPLETE OR CONDENSED. THIS IS FOR INFORMATIONAL PURPOSES ONLY AND IS NOT INTENDED AS AN OFFER OR SOLICITATION WITH RESPECT TO THE PURCHASE, SALE OR LEASE OF ANY PROPERTY. ALL HEREIN LISTED OR REFERENCED PROPERTIES ARE SUBJECT TO AVAILABILITY AND CHANGE IN PRICE AND/OR RATE AND MAY BE WITHDRAWN OR RETRACTED WITHOUT NOTICE OR CAUSE AND WITHOUT LIABILITY TO ANY PARTY INVOLVED. CHANGES IN ANY ASSUMPTION(S) OR CONDITION(S) MAY HAVE A MATERIAL EFFECT ON PROJECTED RESULTS OR VALUES. THIS MESSAGE IS INTENDED FOR THE USE OF THE INDIVIDUAL OR ENTITY TO WHICH IT IS ADDRESSED AND MAY CONTAIN INFORMATION THAT IS PRIVILEGED, CONFIDENTIAL AND EXEMPT FROM DISCLOSURE UNDER APPLICABLE LAW. IF THE READER OF THIS MESSAGE IS NOT THE INTENDED RECIPIENT, EMPLOYEE OR AGENT RESPONSIBLE TO DELIVER IT TO THE INTENDED RECIPIENT, YOU ARE HEREBY NOTIFIED THAT READING, DISSEMINATING, DISTRIBUTING OR COPYING THIS COMMUNICATION IS STRICTLY PROHIBITED.