

Industrial | For Sale

CBRE

4726, 4732 & 4744 Duckhorn Drive Sacramento, CA 95834

±1,437 - ±7,871 SF Office and Warehouse Available



4726, 4732 & 4744 Duckhorn

Sacramento, CA 95834

Property Highlights

- + Professionally Managed Business Park
- + Glass Line Storefront
- + Freeway Visibility
- + Two story office
- + Immediate Access to I-5
- + Automatic Grade Level Doors
- + Proximity to SMF Airport
- + 21' Clear Height
- + Skylights



4726 Duckhorn Drive

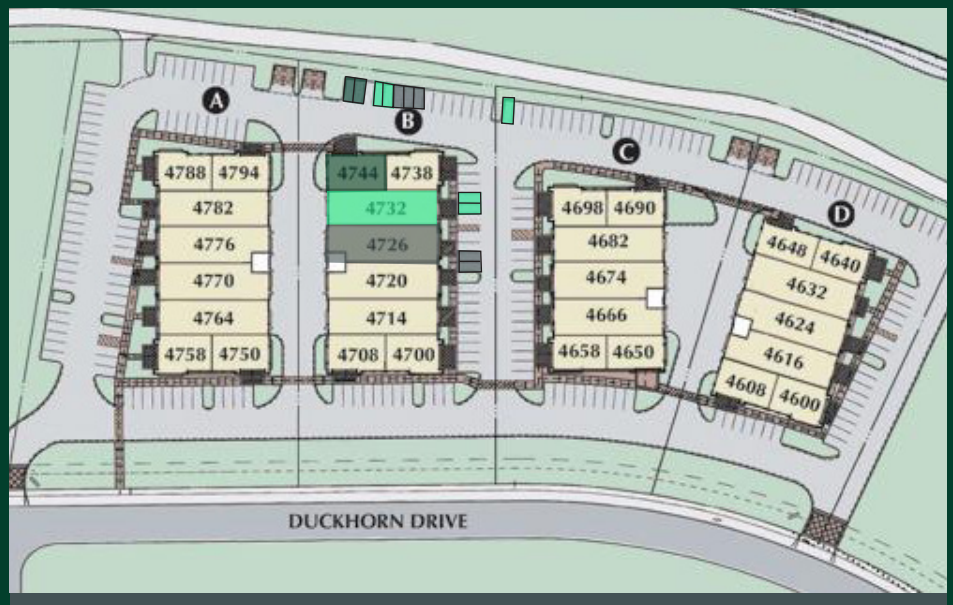
- 3,318 SF Office & Warehouse
- Two story office
- 1 GL Door
- Skylight
- 5 designated parking stalls
- HOA: \$650.58/month

4732 Duckhorn Drive

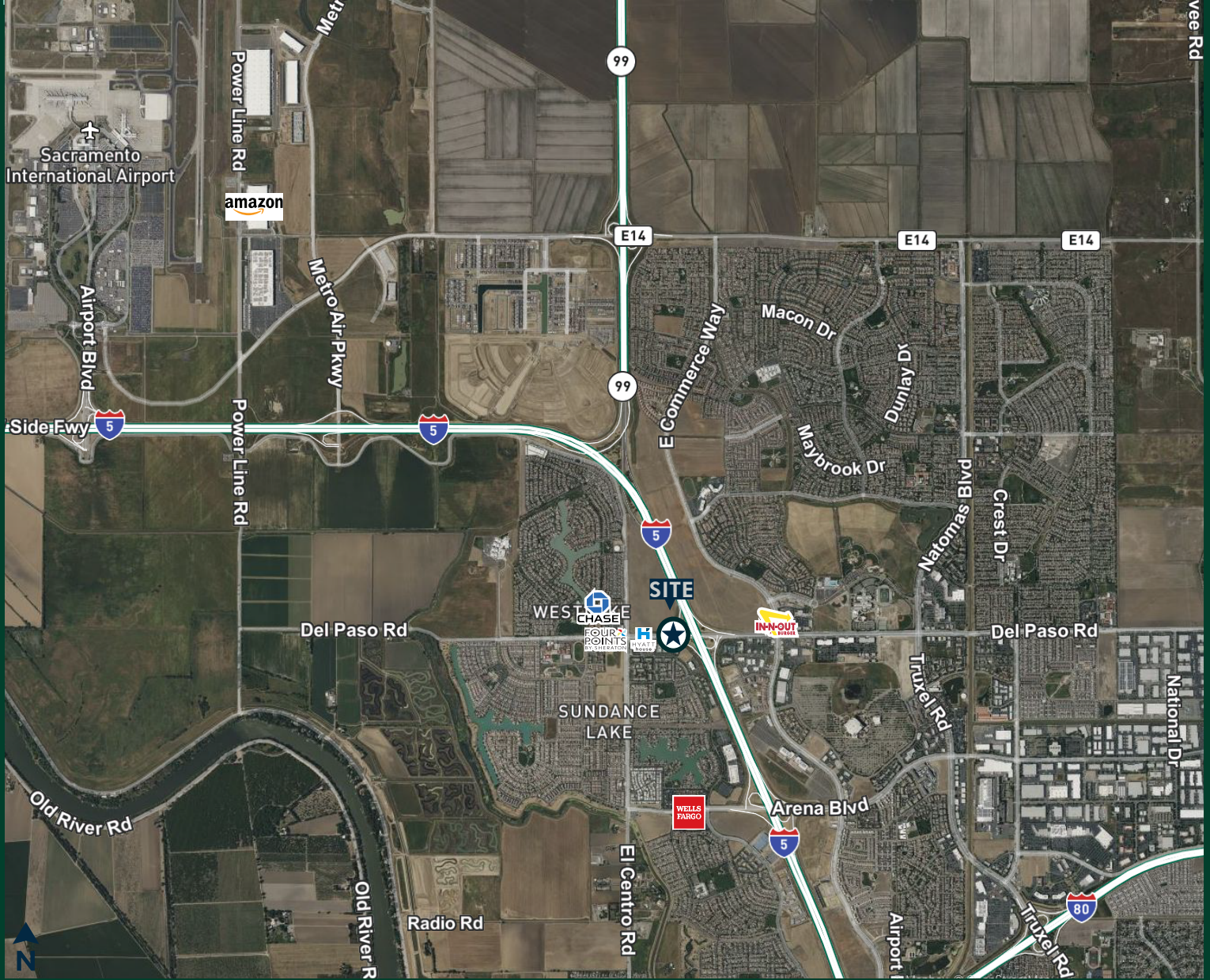
- 3,116 SF Office & Warehouse
- Two story office
- 1 GL Door
- Skylight
- 5 designated parking stalls
- HOA: \$650.19/month

4744 Duckhorn Drive

- 1,437 SF Office
- 1 private office
- Corner unit
- LVP Flooring
- 2 designated parking stalls
- HOA: \$281.76/month



Access to 4 Major Highways



Contact Us

Mike Zimmerman, SIOR
Senior Vice President
+1 916 446 8702
Mike.Zimmerman1@cbre.com
Lic. 01514055

Sean Merold, SIOR
Senior Vice President
+1 916 446 8701
Sean.Merold@cbre.com
Lic. 01803204

Sean O'Keefe
Associate
+1 916 446 8706
Sean.Okeefe@cbre.com
Lic. 02158942

© 2024 CBRE, Inc. All rights reserved. This information has been obtained from sources believed reliable, but has not been verified for accuracy or completeness. You should conduct a careful, independent investigation of the property and verify all information. Any reliance on this information is solely at your own risk. CBRE and the CBRE logo are service marks of CBRE, Inc. All other marks displayed on this document are the property of their respective owners, and the use of such logos does not imply any affiliation with or endorsement of CBRE. Photos herein are the property of their respective owners. Use of these images without the express written consent of the owner is prohibited.