

WOODLAND OFFICE PARK

MW

FOR LEASE



PROPERTY DETAILS

1536 NORTH WOODLAND PARK BOULEVARD, LAYTON, UTAH 84041

LEASE RATE: \$14.00/SF NNN

- Building 1536
Suite 230: 4,268 SF
 - » Garden level
 - » Recently renovated
- Located just north of Layton Hills Mall
- Centrally located between Ogden and Salt Lake City
- Many nearby amenities
- \$7.75/SF operating expenses
 - » Includes gas and electricity
- Tenant pays in-suite janitorial services



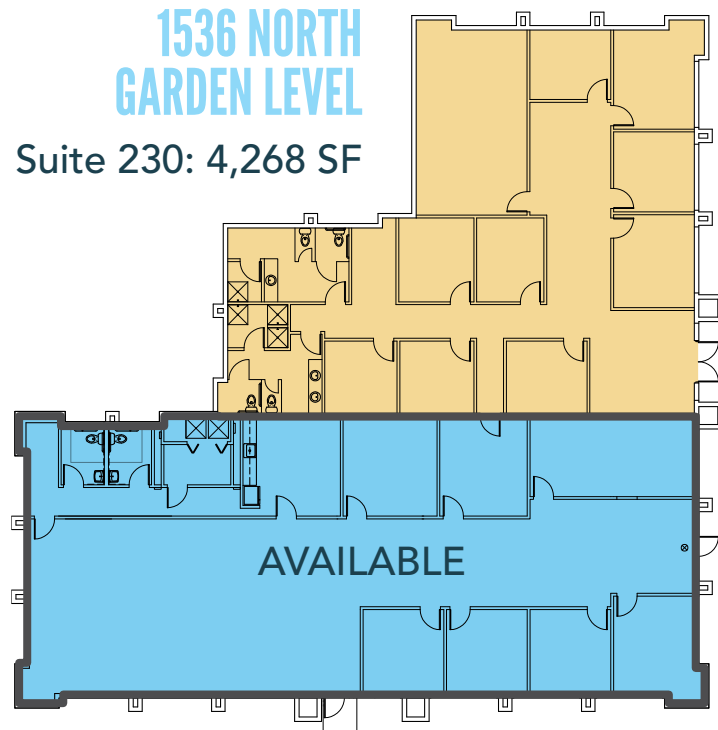
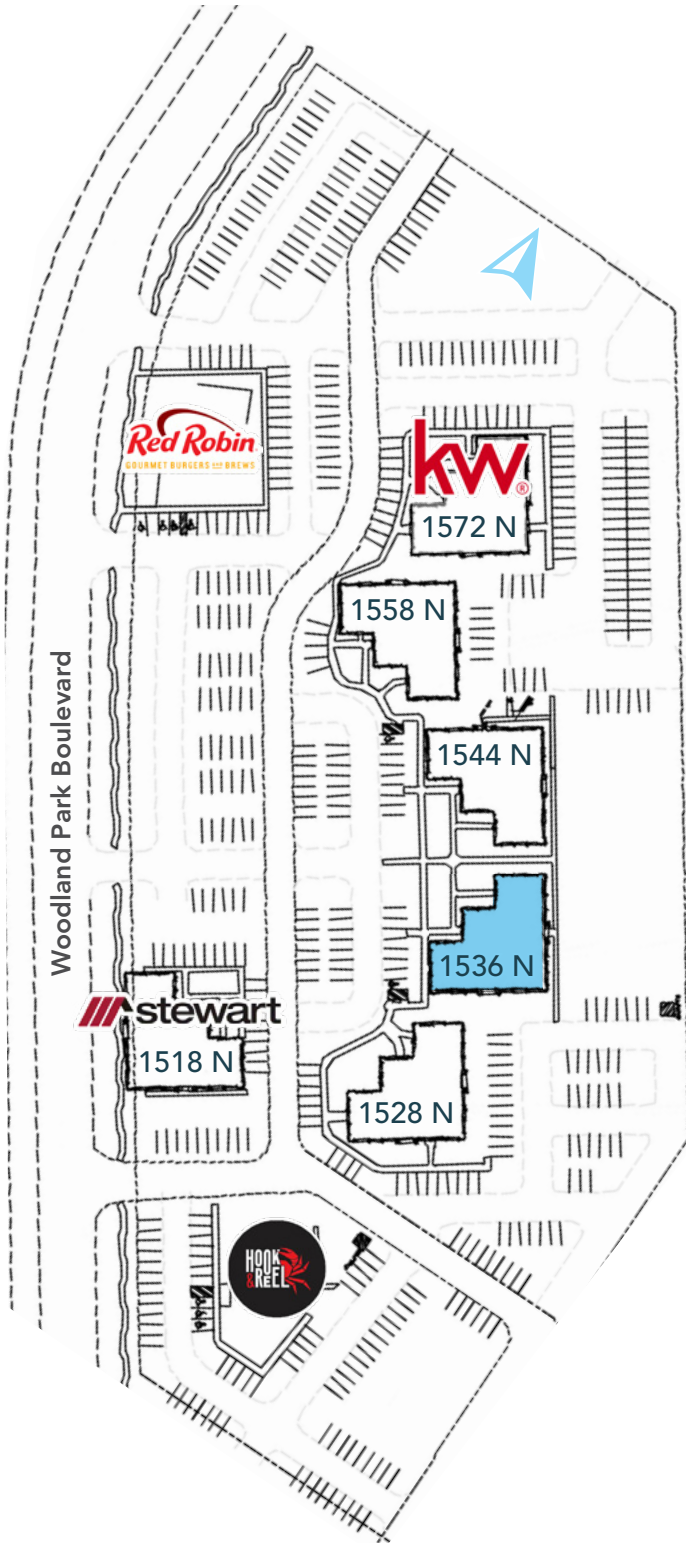
MOUNTAIN WEST
COMMERCIAL REAL ESTATE

CHRIS FALK, CCIM, SIOR
cfalk@mwcre.com
direct 385.429.5500
[View Profile](#)

BRAXTON WILLIE, CCIM
bwillie@mwcre.com
direct 385.429.5501
[View Profile](#)

**FULL SERVICE
COMMERCIAL REAL ESTATE**
1755 East 1450 South
Clearfield, UT 84015
Office 801.578.5580
www.mwcre.com

WOODLAND OFFICE PARK

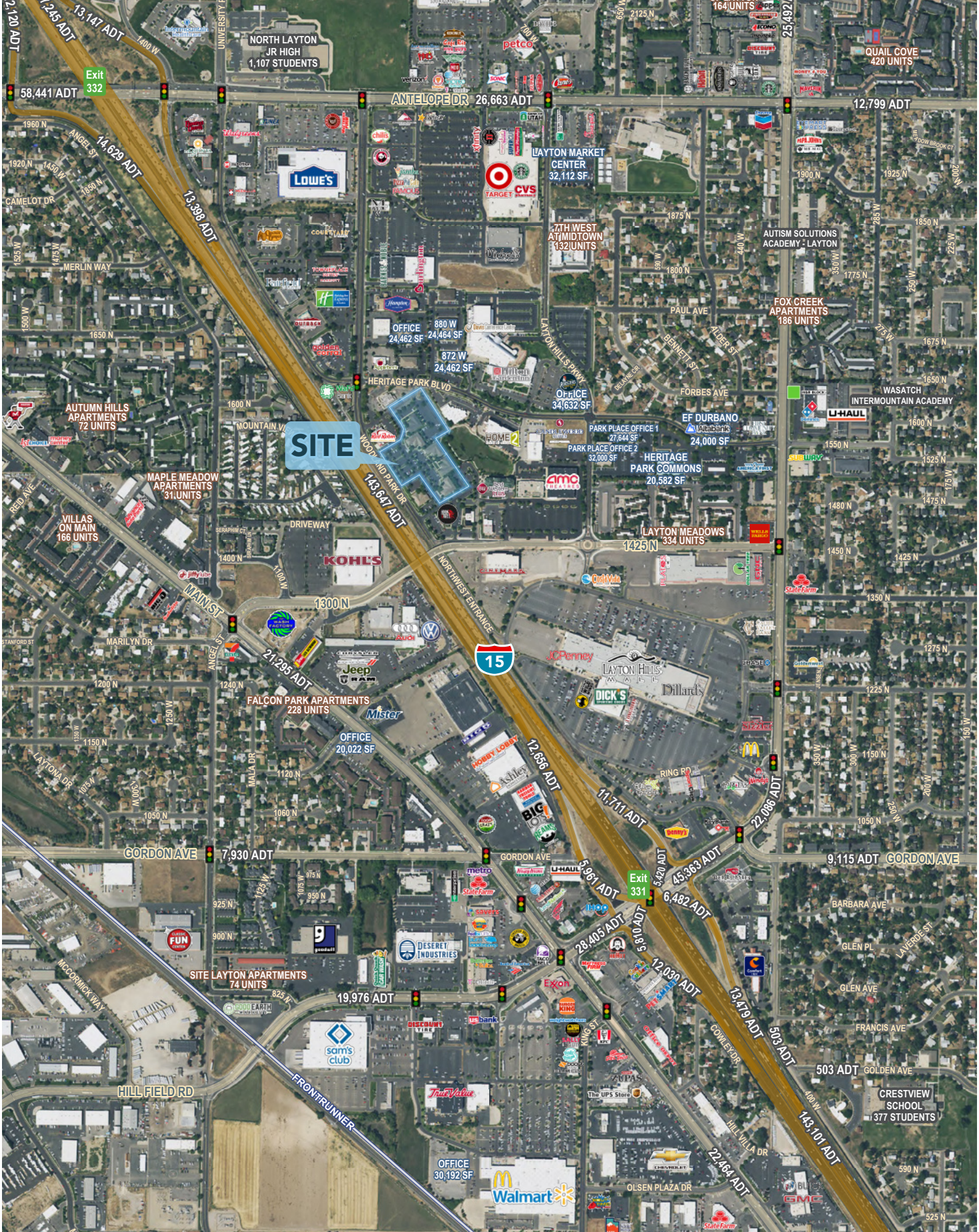


MOUNTAIN WEST
COMMERCIAL REAL ESTATE

CHRIS FALK, CCIM, SIOR
cfalk@mwcre.com
direct 385.429.5500
[View Profile](#)

BRAXTON WILLIE, CCIM
bwillie@mwcre.com
direct 385.429.5501
[View Profile](#)

**FULL SERVICE
COMMERCIAL REAL ESTATE**
1755 East 1450 South
Clearfield, UT 84015
Office 801.578.5580
www.mwcre.com



MOUNTAIN WEST
COMMERCIAL REAL ESTATE

CHRIS FALK, CCIM, SIOR
cfalk@mwcre.com
direct 385.429.5500
[View Profile](#)

BRAXTON WILLIE, CCIM
bwillie@mwcre.com
direct 385.429.5501
[View Profile](#)

**FULL SERVICE
COMMERCIAL REAL ESTATE**
1755 East 1450 South
Clearfield, UT 84015
Office 801.578.5580
www.mwcre.com

This statement with the information it contains is given with the understanding that all negotiations relating to the purchase, renting or leasing of the property described above shall be conducted through this office. The above information while not guaranteed has been secured from sources we believe to be reliable.