

FOR LEASE | RETAIL

972 N. LAPEER RD | RETAIL



972 N. LAPEER RD
OXFORD, MI 48371

PROPERTY HIGHLIGHTS:

- 2,584 SF, wide-open space available
- Landlord will provide space in white box format, tenant to modify for their needs
- Fantastic location in a Meijer outlet that includes Chase Bank, Taco Bell, and Tim Hortons
- Across the street from Waterstone, the Legacy Center, and McDonalds
- Oxford is growing with over 1,200 homes in Waterstone alone and more new construction
- Current Tenant, PKSA Karate, will vacate with 30 days notice
- Located on Lapeer Rd, a main artery from Lapeer County to South Oakland County
- Asking lease rate of \$18.00 per SF - NNN

The information provided herein along with any attachment(s) was obtained from sources believed to be reliable, however, Friedman Real Estate makes no guarantees, warranties, or representations as to the completeness or accuracy of such information and legal counsel is advised. All information provided is subject to verification and no liability for reliance on such information or errors or omissions is assumed. The presentation of this property is submitted subject to errors, omissions, change of price or conditions, prior sale or lease, or withdrawal without notice. Copyright © 2024 Friedman Real Estate. All rights reserved.

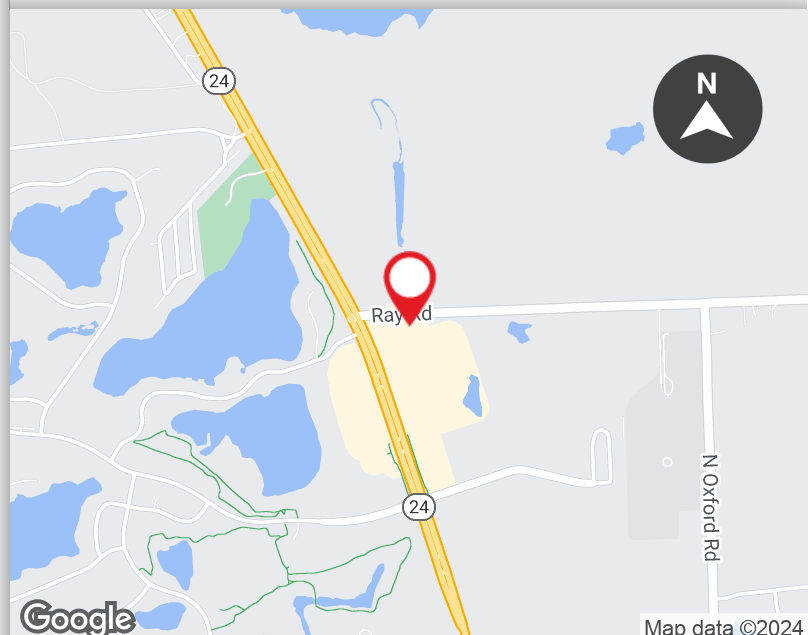
FOR MORE INFORMATION PLEASE CONTACT:



LARRY SCHULTZ
larry.schultz@freg.com

248.324.2000

eCODE 354



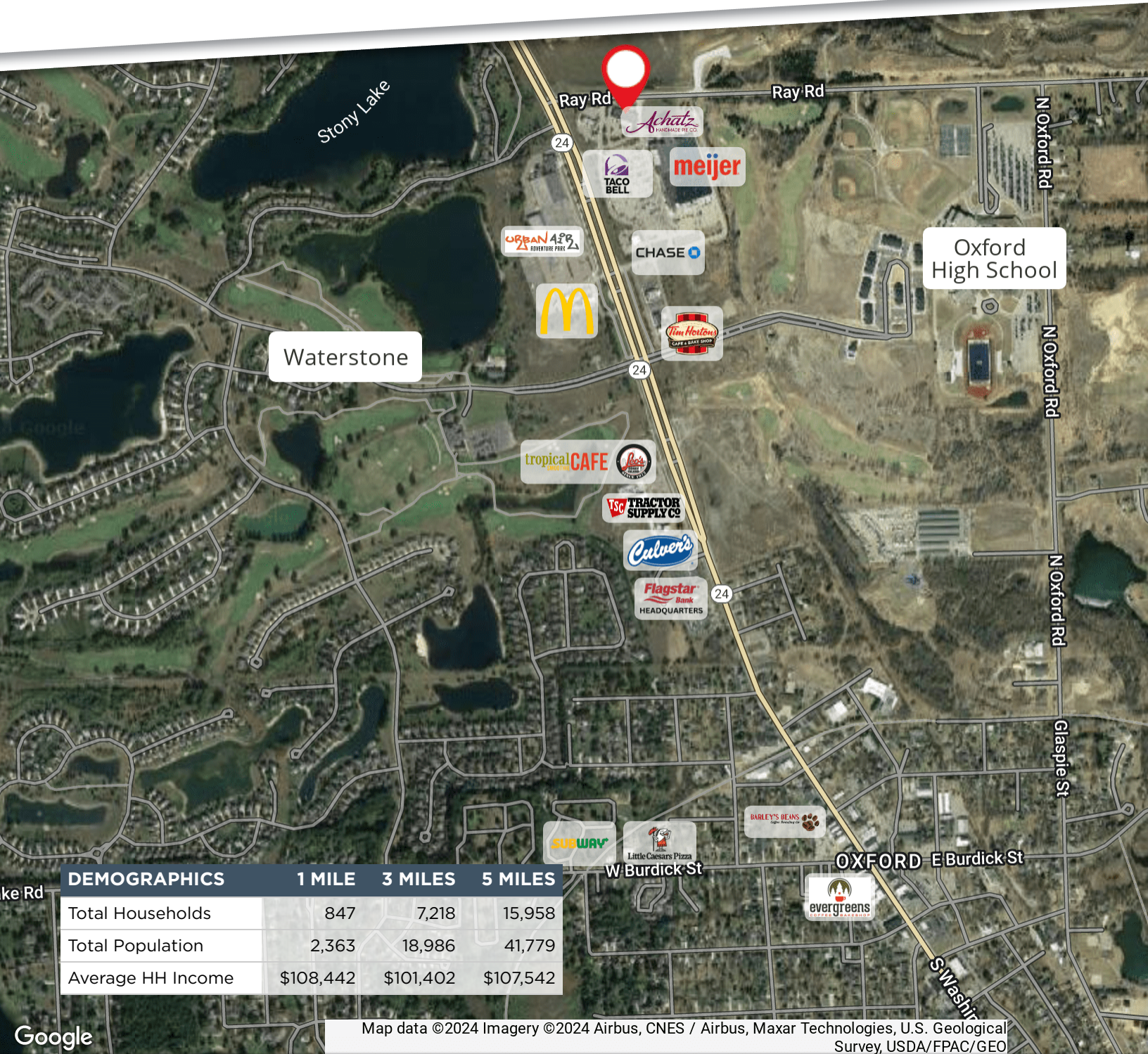
972 N. LAPEER RD | RETAIL
PROPERTY **AVAILABILITY**



AVAILABLE SUITES

| SPACE | LEASE RATE | LEASE TYPE | SIZE (SF) |
|-----------------|---------------|------------|-----------|
| 972/PKSA Karate | \$18.00 SF/yr | NNN | 2,584 SF |

972 N. LAPEER RD | RETAIL RETAILER MAP



| DEMOGRAPHICS | 1 MILE | 3 MILES | 5 MILES |
|-------------------|-----------|-----------|-----------|
| Total Households | 847 | 7,218 | 15,958 |
| Total Population | 2,363 | 18,986 | 41,779 |
| Average HH Income | \$108,442 | \$101,402 | \$107,542 |

Map data ©2024 Imagery ©2024 Airbus, CNES / Airbus, Maxar Technologies, U.S. Geological Survey, USDA/FPAC/GEO