



FOR SUBLEASE

INDUSTRIAL BUILDING

Property Highlights

- 235,500 ±SF industrial building for sublease
- Lease Rate: \$3.28/SF NNN
- Lease Term through November 30,2032
- 17 dock doors (2 drive-ins)
- Electrical: 6,300 Amps | 480V | 3-Phase
- 20' clear height
- Column Spacing: 40' W x 40' D
- Sprinkler: Wet
- Easy access to I-530 & Hwy 365

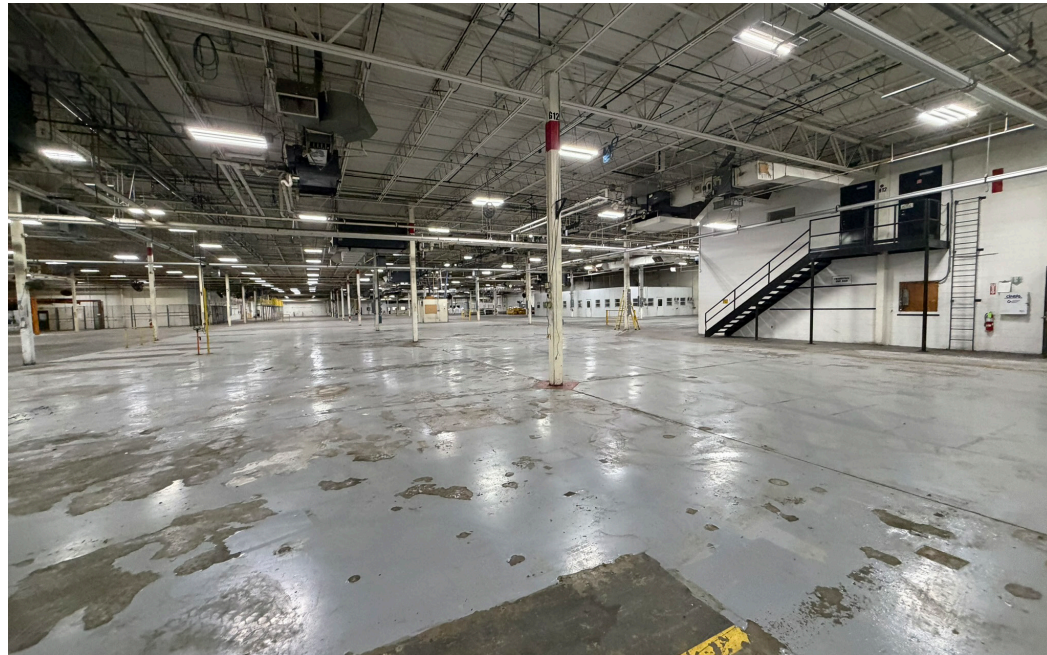
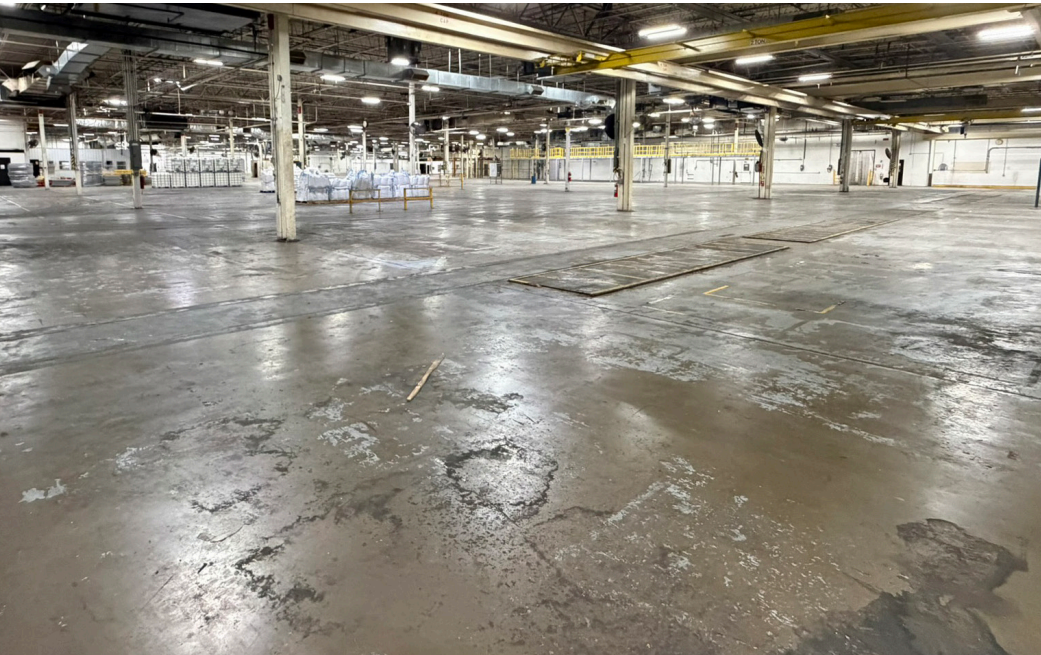
*information deemed reliable but not guaranteed

**For more information, please
contact:**

Alex Bennett
501 350 7443
abennett@sagepartners.com

Ryan Gibson
501 680 6119
rgibson@sagepartners.com

501 716 5511
sagepartners.com





Jefferson Industrial Park

SUBJECT PROPERTY



Jefferson Pky



Sheridan Rd



HWY 365

