

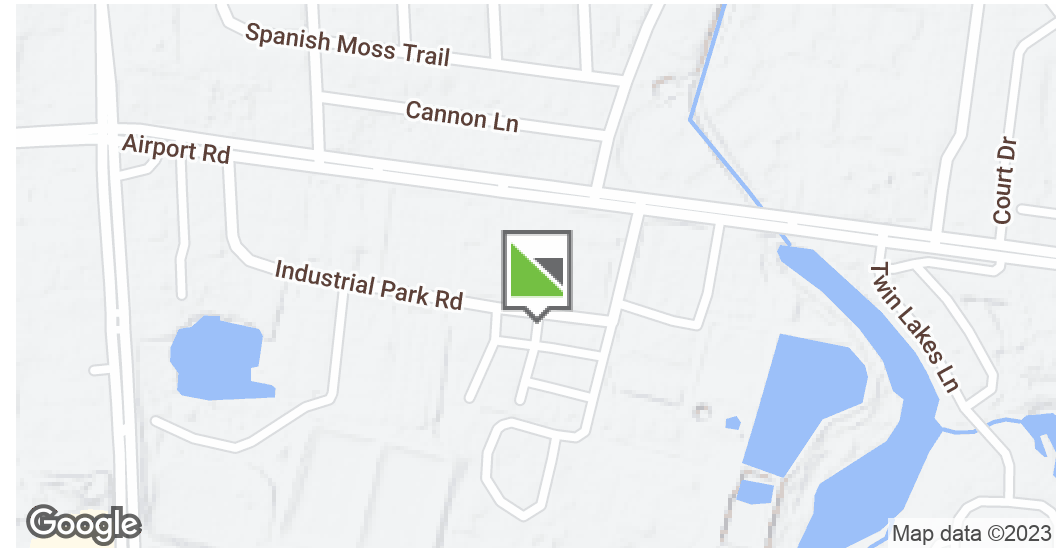
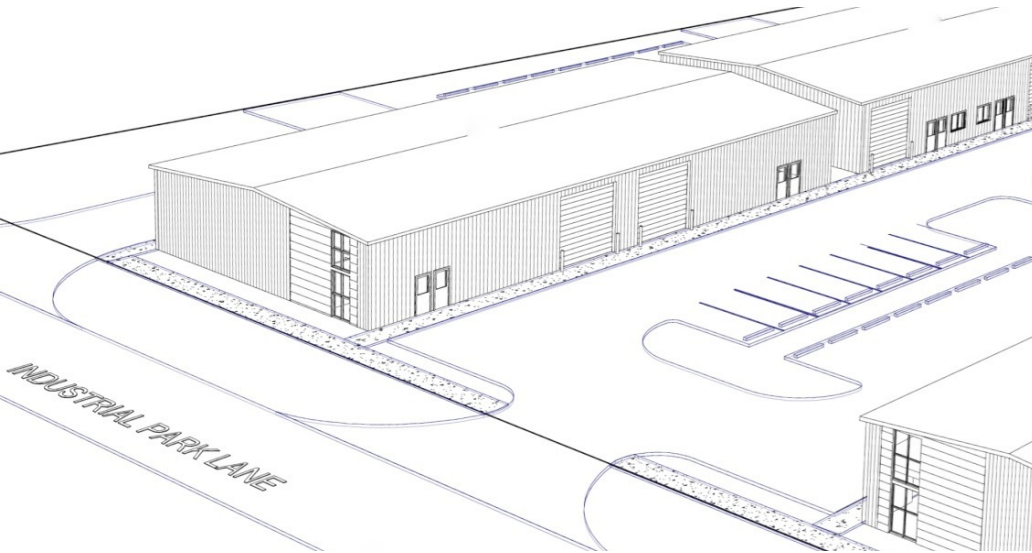
DESTIN INDUSTRIAL PARK

250 Industrial Park Road, Destin, FL 32541

INDUSTRIAL PROPERTY FOR LEASE

TAYLORALLEN
PROPERTIES

EXECUTIVE SUMMARY



OFFERING SUMMARY

Lease Rate:	\$13.00 SF/yr (NNN)
Building Size:	32,400 SF
Available SF:	2,000 - 7,200 SF
Lot Size:	2.5 Acres
Number of Units:	9
Zoning:	Light Industrial
Market:	Destin
Submarket:	West Destin

PROPERTY OVERVIEW

Finally- new light industrial space in Destin FL. Destin Industrial Park Phase 2 is an upscale business park conveniently located off of Airport Rd in Destin. This 32,400sf of office/ warehouse development will be available for occupancy in the 4th quarter of 2023. Units will range in size from 2000sf to 7200sf with 16 ft eave heights, 14ft overhead doors and varying interior layouts.

PROPERTY HIGHLIGHTS

- Conveniently Located
- New construction
- Available 4th quarter 2023

For More Information:

Chad Knaepple,
CCIM, SIOR
850.687.4075
chad@taylorallenllc.com

PAGE 1

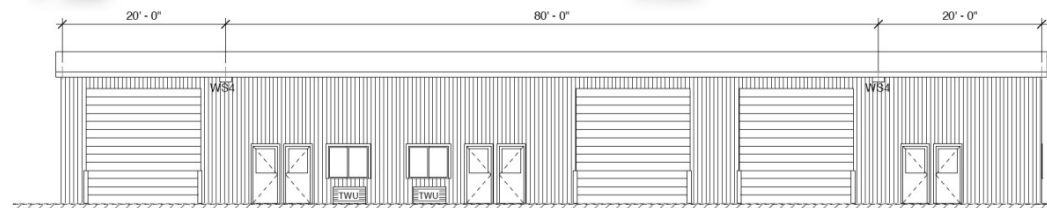
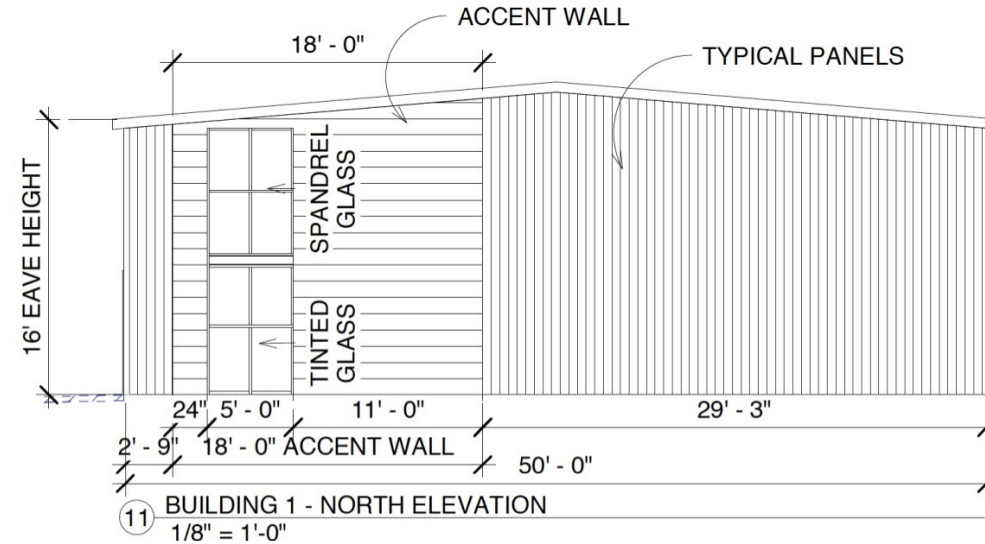
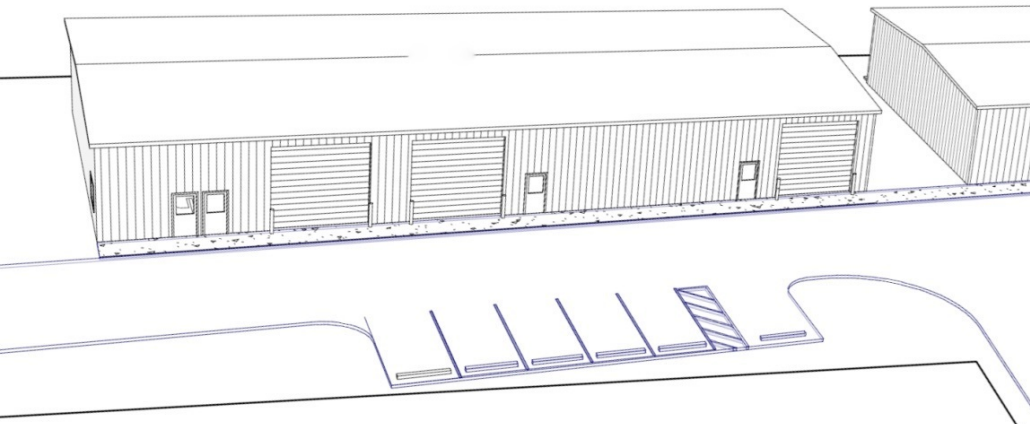
1219 Airport Road | Destin, FL 32541
taylorallenllc.com

DESTIN INDUSTRIAL PARK

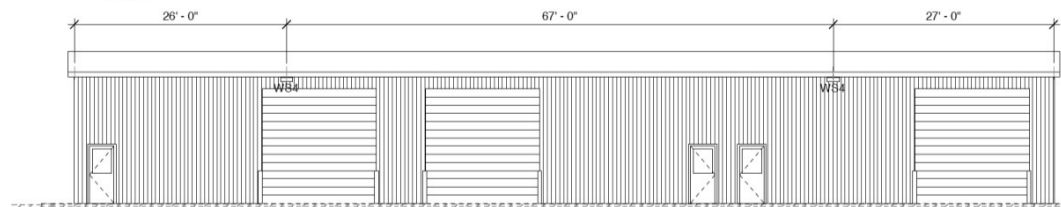
250 Industrial Park Road, Destin, FL 32541

INDUSTRIAL PROPERTY FOR LEASE

TAYLORALLEN
PROPERTIES



4 BUILDING -WEST ELEVATION
1/8" = 1'-0"



5 BUILDING -EAST ELEVATION
1/8" = 1'-0"

For More Information:

Chad Knaepple,
CCIM, SIOR
850.687.4075
chad@taylorallenllc.com

PAGE 2

1219 Airport Road | Destin, FL 32541
taylorallenllc.com

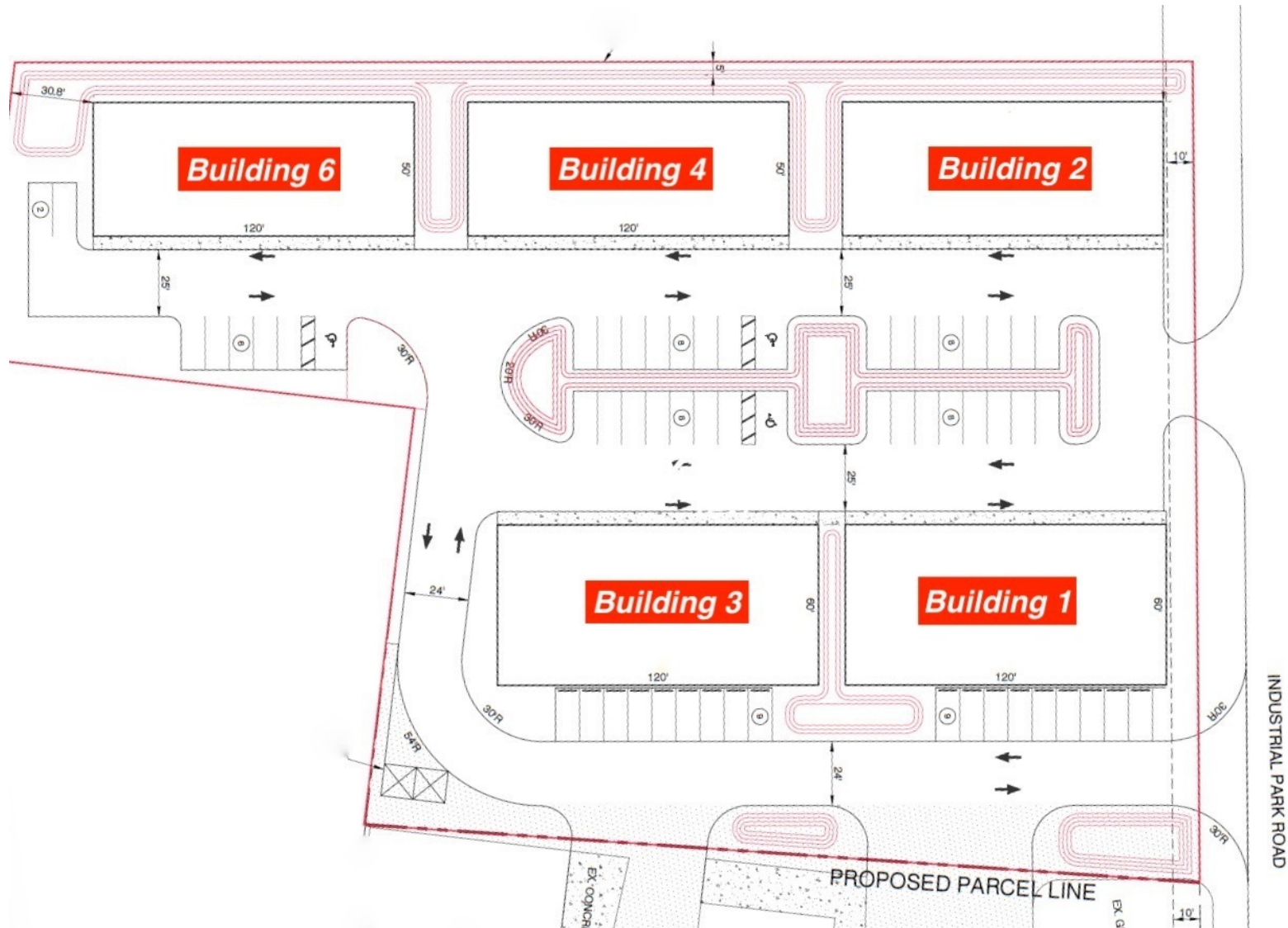
DESTIN INDUSTRIAL PARK

250 Industrial Park Road, Destin, FL 32541

INDUSTRIAL PROPERTY FOR LEASE

SITE PLANS

TAYLORALLEN
PROPERTIES



For More Information:

Chad Knaepple,
CCIM, SIOR
850.687.4075
chad@taylorallenllc.com

PAGE 3

1219 Airport Road | Destin, FL 32541
taylorallenllc.com

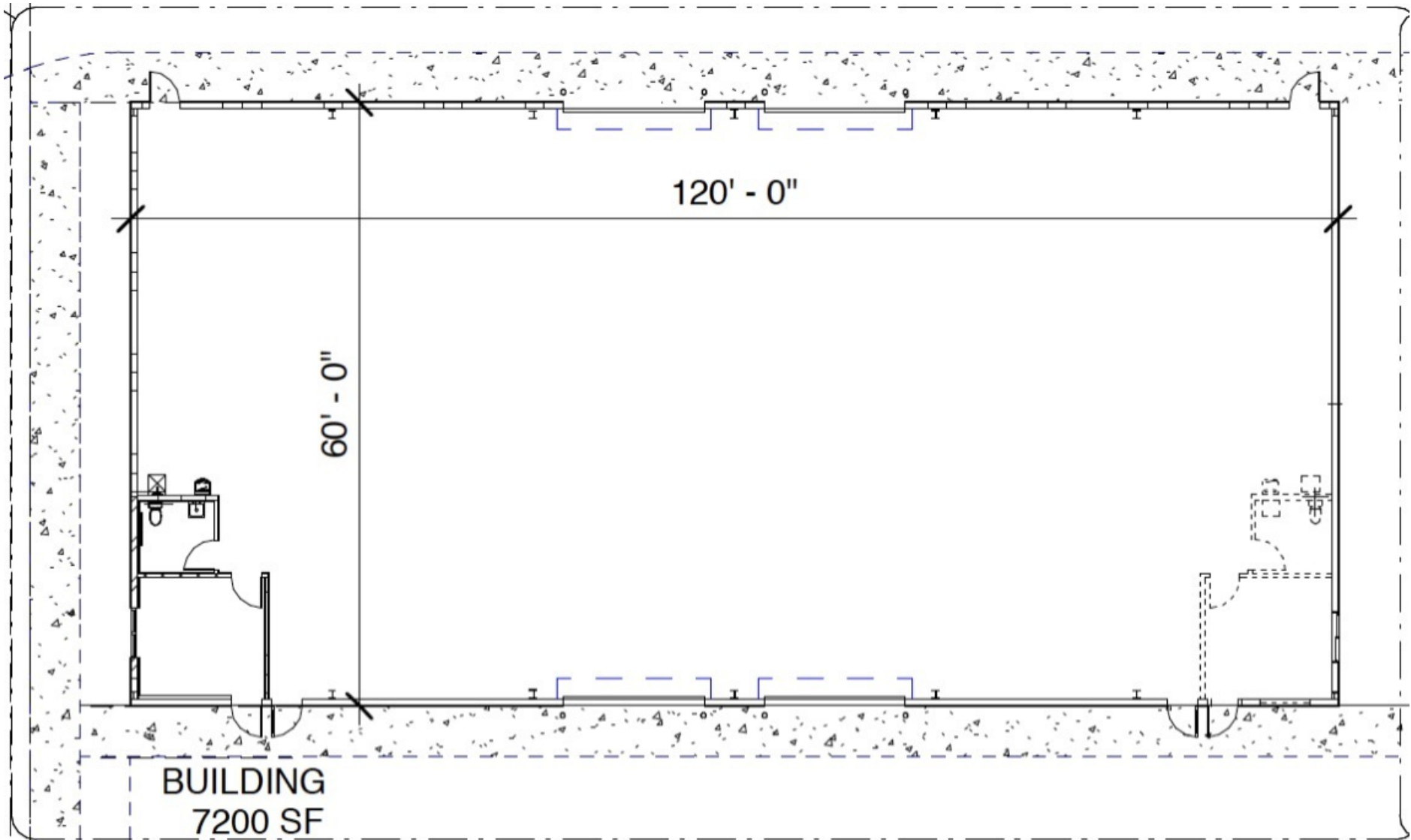
DESTIN INDUSTRIAL PARK

250 Industrial Park Road, Destin, FL 32541

INDUSTRIAL PROPERTY FOR LEASE

UNIT 101

TAYLORALLEN
PROPERTIES



For More Information:

Chad Knaepple,
CCIM, SIOR
850.687.4075
chad@taylorallenllc.com

PAGE 4

1219 Airport Road | Destin, FL 32541
taylorallenllc.com

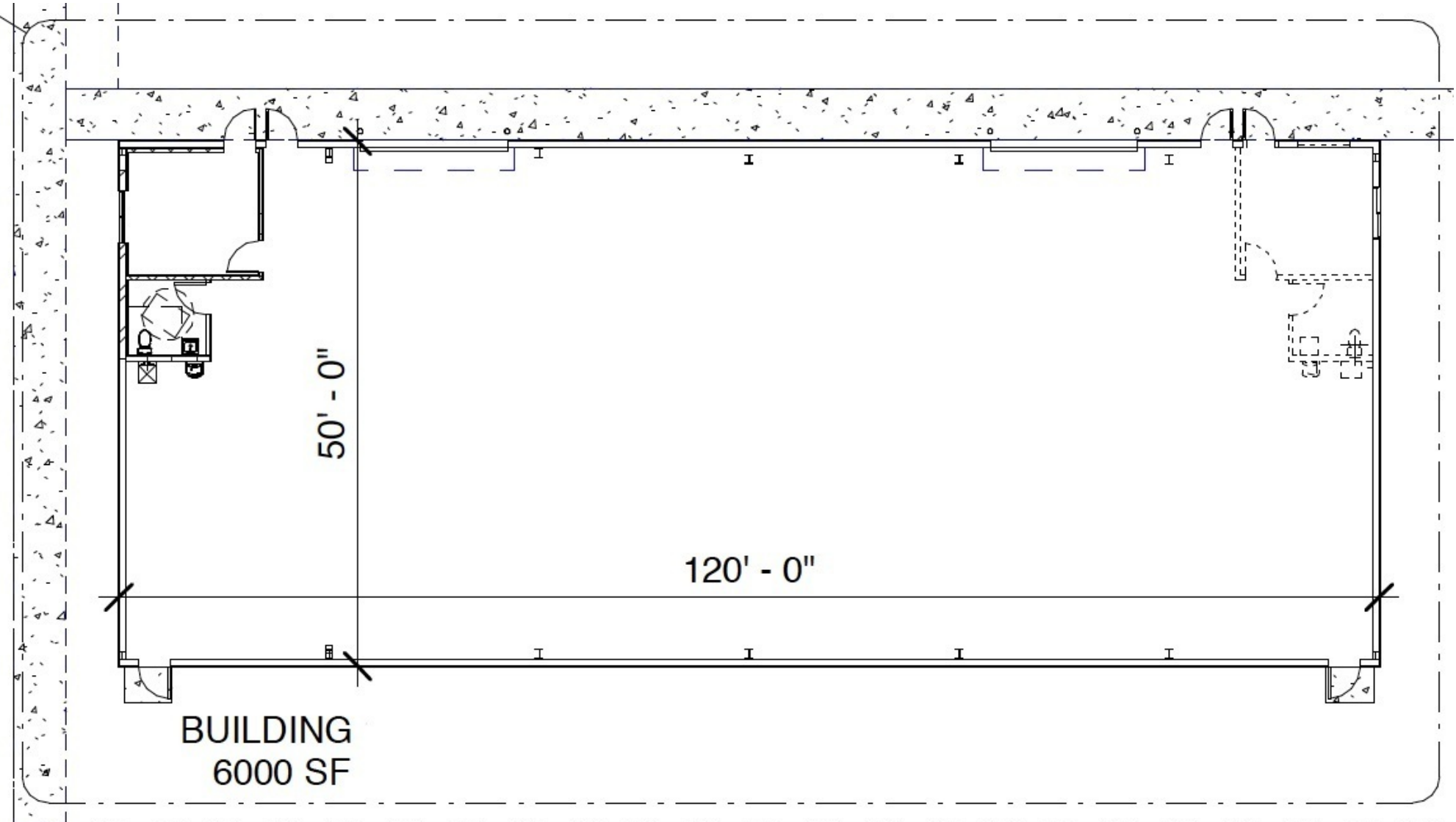
DESTIN INDUSTRIAL PARK

250 Industrial Park Road, Destin, FL 32541

INDUSTRIAL PROPERTY FOR LEASE

UNIT 201

TAYLORALLEN
PROPERTIES



For More Information:

Chad Knaepple,
CCIM, SIOR
850.687.4075
chad@taylorallenllc.com

PAGE 5

1219 Airport Road | Destin, FL 32541
taylorallenllc.com

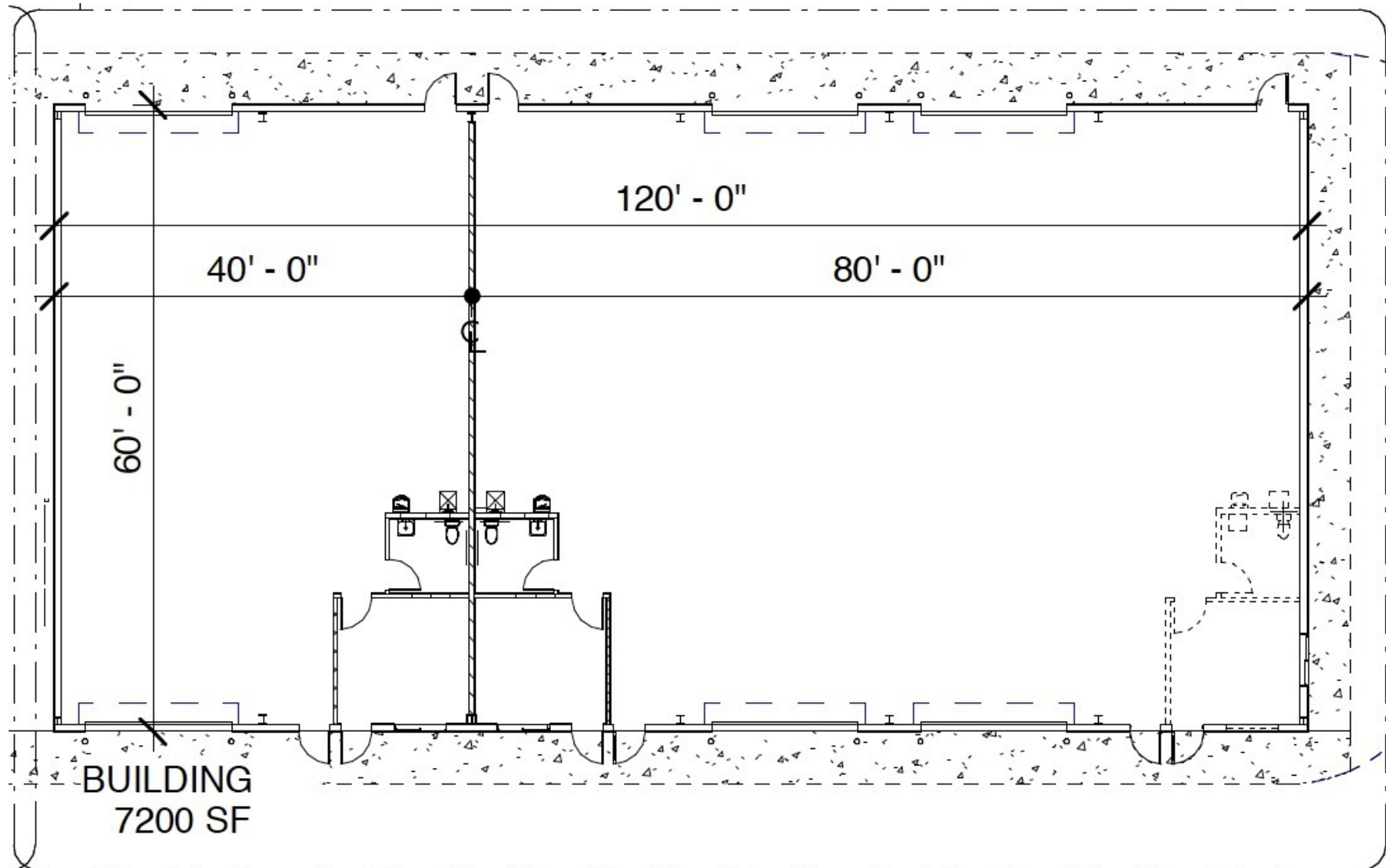
DESTIN INDUSTRIAL PARK

250 Industrial Park Road, Destin, FL 32541

INDUSTRIAL PROPERTY FOR LEASE

UNITS 301 & 302

TAYLORALLEN
PROPERTIES



For More Information:

Chad Knaepple,
CCIM, SIOR
850.687.4075
chad@taylorallenllc.com

PAGE 6

1219 Airport Road | Destin, FL 32541
taylorallenllc.com

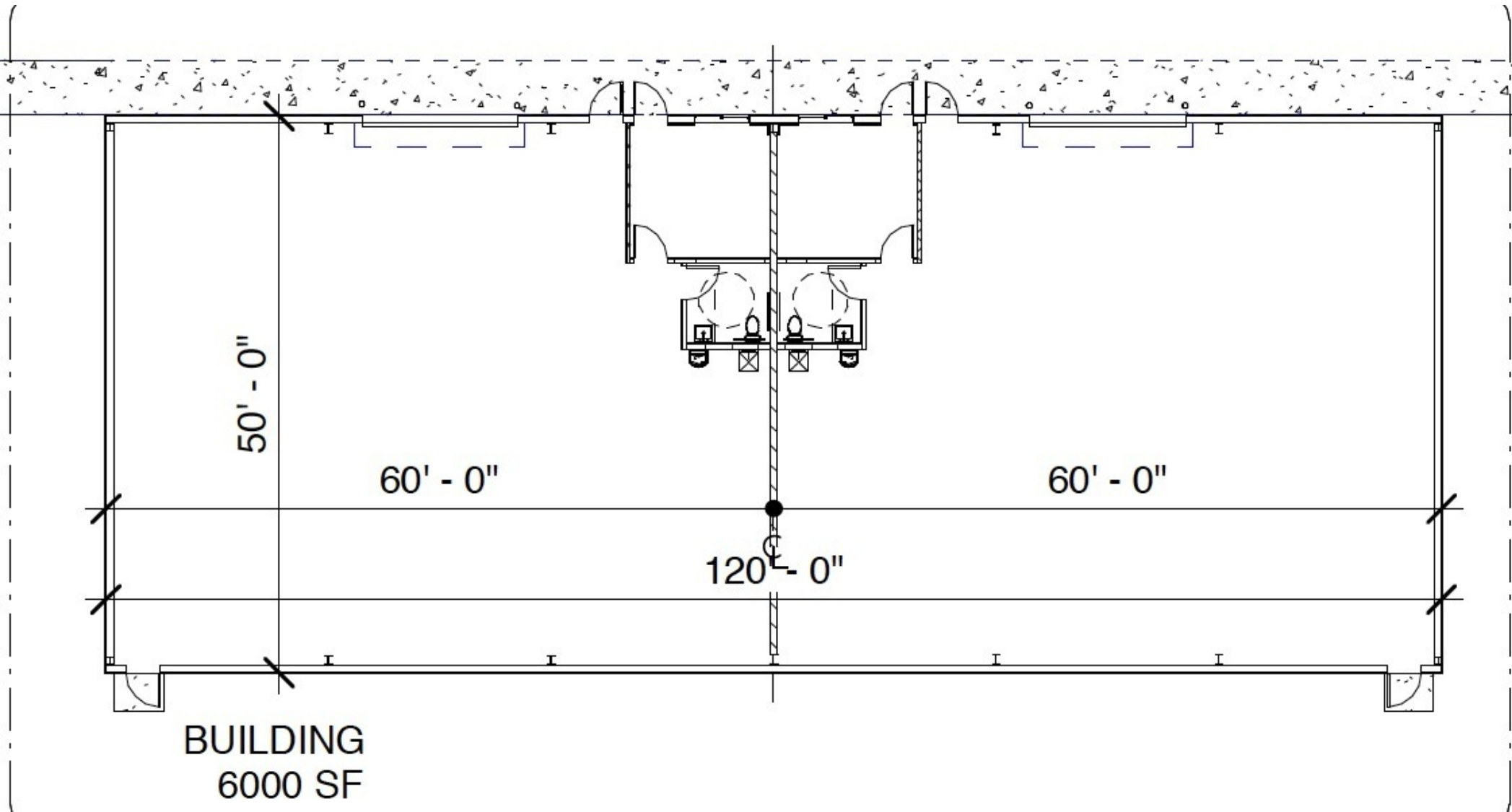
DESTIN INDUSTRIAL PARK

250 Industrial Park Road, Destin, FL 32541

INDUSTRIAL PROPERTY FOR LEASE

UNITS 401& 402

TAYLORALLEN
PROPERTIES



For More Information:

Chad Knaepple,
CCIM, SIOR
850.687.4075
chad@taylorallenllc.com

PAGE 7

1219 Airport Road | Destin, FL 32541
taylorallenllc.com

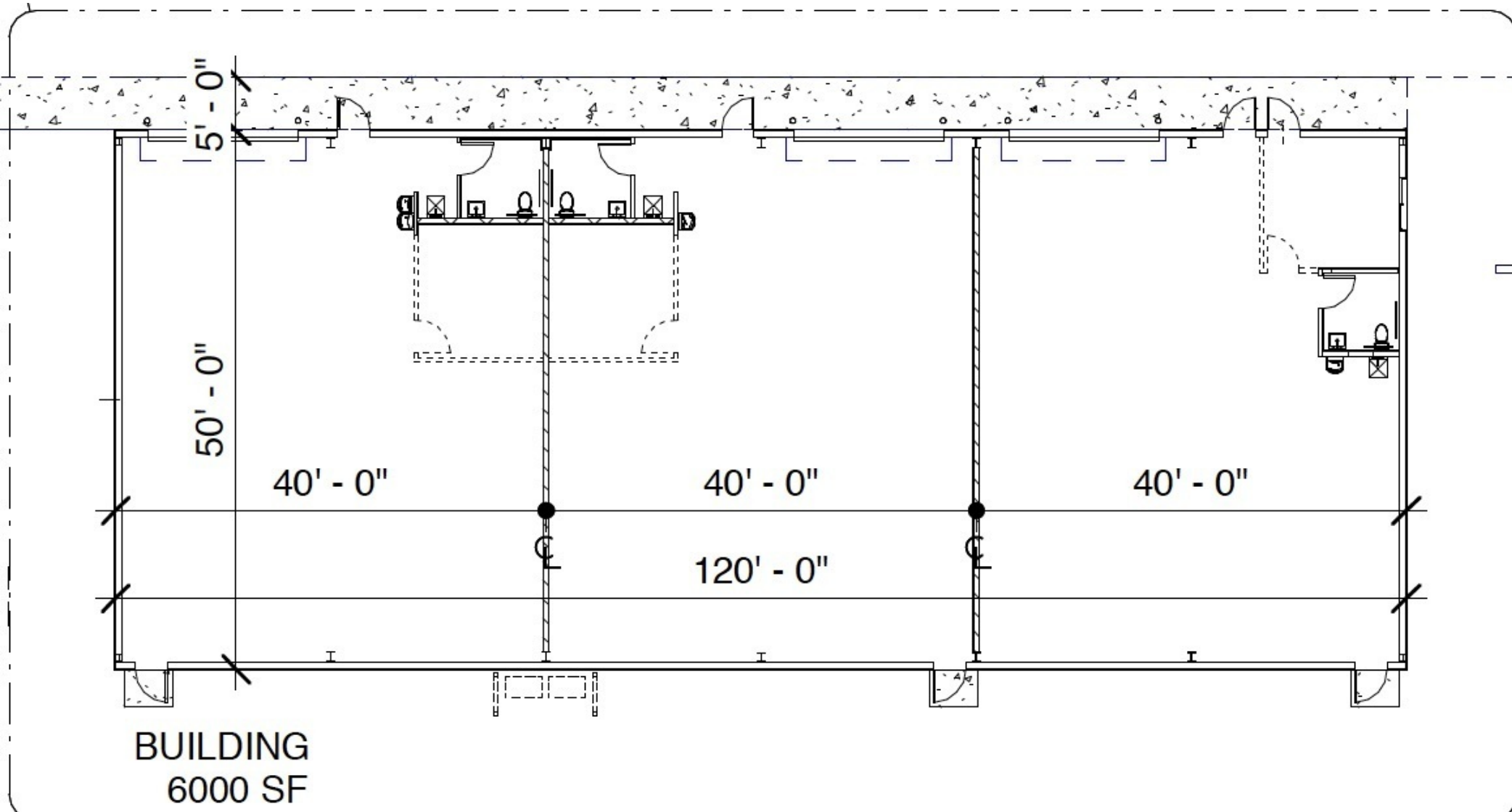
DESTIN INDUSTRIAL PARK

250 Industrial Park Road, Destin, FL 32541

INDUSTRIAL PROPERTY FOR LEASE

UNITS 601, 602 & 603

TAYLORALLEN
PROPERTIES



For More Information:

Chad Knaepple,
CCIM, SIOR
850.687.4075
chad@taylorallenllc.com

PAGE 8

1219 Airport Road | Destin, FL 32541
taylorallenllc.com

DESTIN INDUSTRIAL PARK

250 Industrial Park Road, Destin, FL 32541

INDUSTRIAL PROPERTY FOR LEASE

AREA MAP

TAYLORALLEN
PROPERTIES



For More Information:

Chad Knaepple,
CCIM, SIOR
850.687.4075
chad@taylorallenllc.com

PAGE 9

1219 Airport Road | Destin, FL 32541
taylorallenllc.com

ADVISOR BIO & CONTACT 1

CHAD KNAEPPEL, CCIM, SIOR

Executive Director



1219 Airport Road , Suite 311
Destin, FL 32541
T 850.687.4075
chad@taylorallenllc.com
FL #SL3050854

PROFESSIONAL BACKGROUND

Chad Knaepple is the Co-founder/Executive Director of Taylor Allen Properties and specializes in the sale of Commercial Investment Property and the Leasing of Office and Industrial space. Chad is one of only two Brokers in Northwest Florida to achieve both the CCIM and the SIOR designations from the Society of Industrial and Office Realtors. These designations are reserved for highly-qualified real estate practitioners with a strong transactional history. Chad has been a Licensed Realtor in the State of Florida since 2002 and has solely focused on commercial sales and leasing over the last twelve years. In 2020, Chad was able to sell or lease over 300,000 square feet of improved commercial property to include negotiating a 25,000 square foot, Class A office lease with Turnberry Associates in Destin, Florida. He also secured the re-tenant and sale of a 61,000 square foot business park in Panama City Beach, Florida, and the re-development of 32,000 square foot heavy industrial site in Freeport, Florida. Mr. Knaepple currently serves as a Board Member of Gulf Coast Commercial MLS (regional commercial MLS), Treasurer of the Airport Plaza Commercial Condominium and also volunteers his time professionally for Food for Thought Florida (501 c 3) advising on site selection, valuations, and negotiations for their current and past locations.

EDUCATION

Louisiana State University- School Of Architecture

MEMBERSHIPS & AFFILIATIONS

CCIM, SIOR

Commercial Realtor of the Year 2015, 2017& 2021

Gulf Coast Commercial MLS- Board of Directors

For More Information:

Chad Knaepple,
CCIM, SIOR
850.687.4075
chad@taylorallenllc.com