

FOR SALE BY AUCTION

1025 McClellandtown Rd. McClellandtown, Fayette County, PA



Commercial Building & Residence

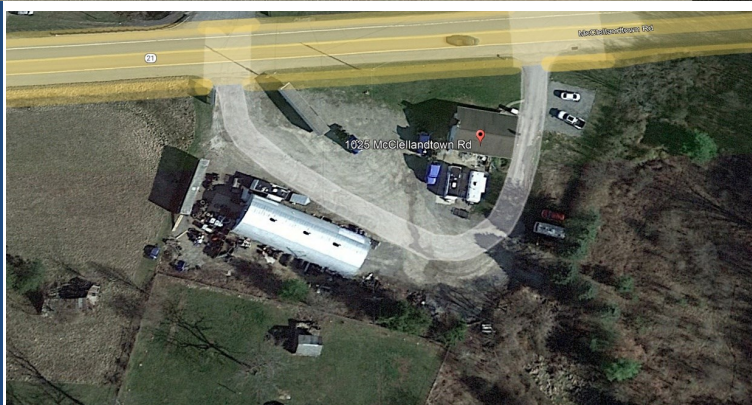


AUCTION

**KEITH MARILUNGA TRUCKING
REAL ESTATE & EQUIPMENT**

Saturday, September 7, 2024
Doors Open at 8AM Auction begins at 10AM
3,300 SF +/- Approx. 1.3 Acres

1025 McClellandtown Rd. McClellandtown, PA 15461



Offered by Edward J. Lewis, Inc.

Db, Hartland Auctioneers

www.hartlandauctions.com

Dean Gearhart, Auctioneer

PA License # AU002918L, AY000190L

724-713-6394

Lewis

Edward J. Lewis, Inc.

330-746-6581

Building: Quonset Hut, approximately 3,300 SF or 33' x 100'

Electrical: 3 Phase Power

Residence: Approximately 1,200 SF

Full bathroom upstairs w/two bedrooms, 1/2 bath downstairs w/shower.

Utilities: Onsite, well water. Individual septic systems for residence & commercial building.

Real Estate Taxes: County \$396 + Municipal \$117 + School \$912 = Total Tax \$1,425

Zoning: Agricultural/Rural

CONTACT: Edward J. Lewis, Inc. (330) 746-6581
27 S. Hazel Street
Youngstown, OH 44503
Scott Lewis, PA License # RM062006A
Email: slejl@sbcglobal.net

Lewis

Edward J. Lewis, Inc.

ALL INFORMATION BELIEVED TO BE CORRECT BUT NOT GUARANTEED 07/30/24