



# 69 LeFante Way

Bayonne, NJ 07002

FOR LEASE  
**±117,366 SF**

CLASS A DEVELOPMENT  
MOVE-IN READY



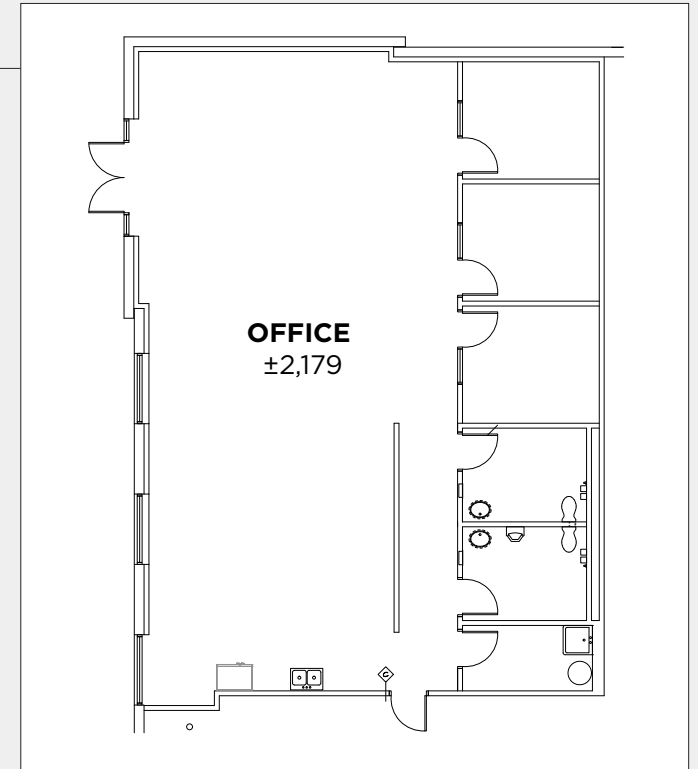
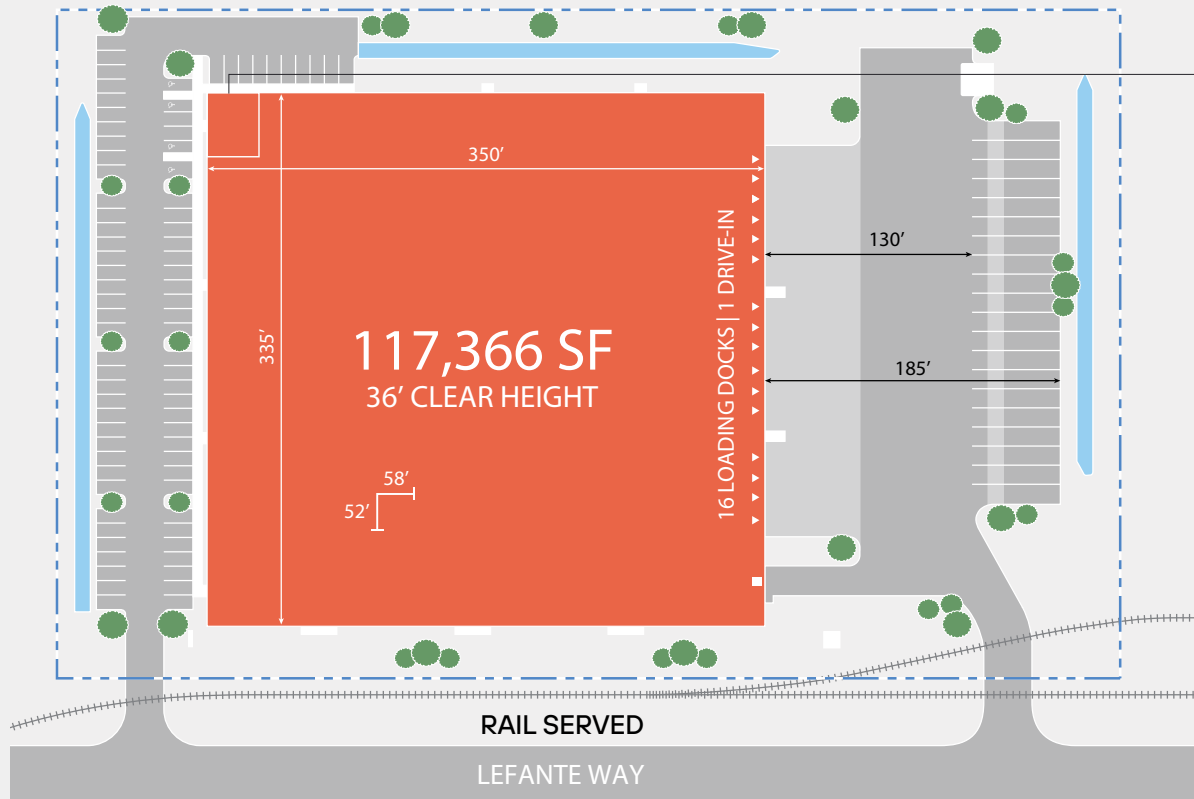
Leasing by:



**20-YEAR PILOT**

# SITE PLAN & SPECIFICATIONS

**FOR LEASE ±117,366 SF**  
69 LeFante Way, Bayonne, NJ



**BUILDING SF**  
±117,366

**LOADING FORMAT**  
Rear

**FIRE PROTECTION**  
ESFR

**AVAILABLE SF**  
±117,366

**LOADING DOCKS**  
16

**LIGHTING**  
LED

**OFFICE**  
±2,179

**DRIVE-IN DOOR**  
1

**POWER**  
2,000 Amps

**CLEAR HEIGHT**  
36'

**TRUCK COURT DEPTH**  
130'

**SOLAR**  
Solar Ready

**COLUMN SPACING**  
52' x 58'

**TRAILER STALLS**  
20

**EV CHARGER**  
EV Charger Ready

**SPEED BAYS**  
60'

**CAR PARKING**  
80

**LEED CERTIFICATION**  
Silver Expected



# PROPERTY HIGHLIGHTS



**OUTDOOR STORAGE**  
AVAILABLE



**LAST MILE**  
LOCATION



**HEAVY INDUSTRIAL**  
ZONED

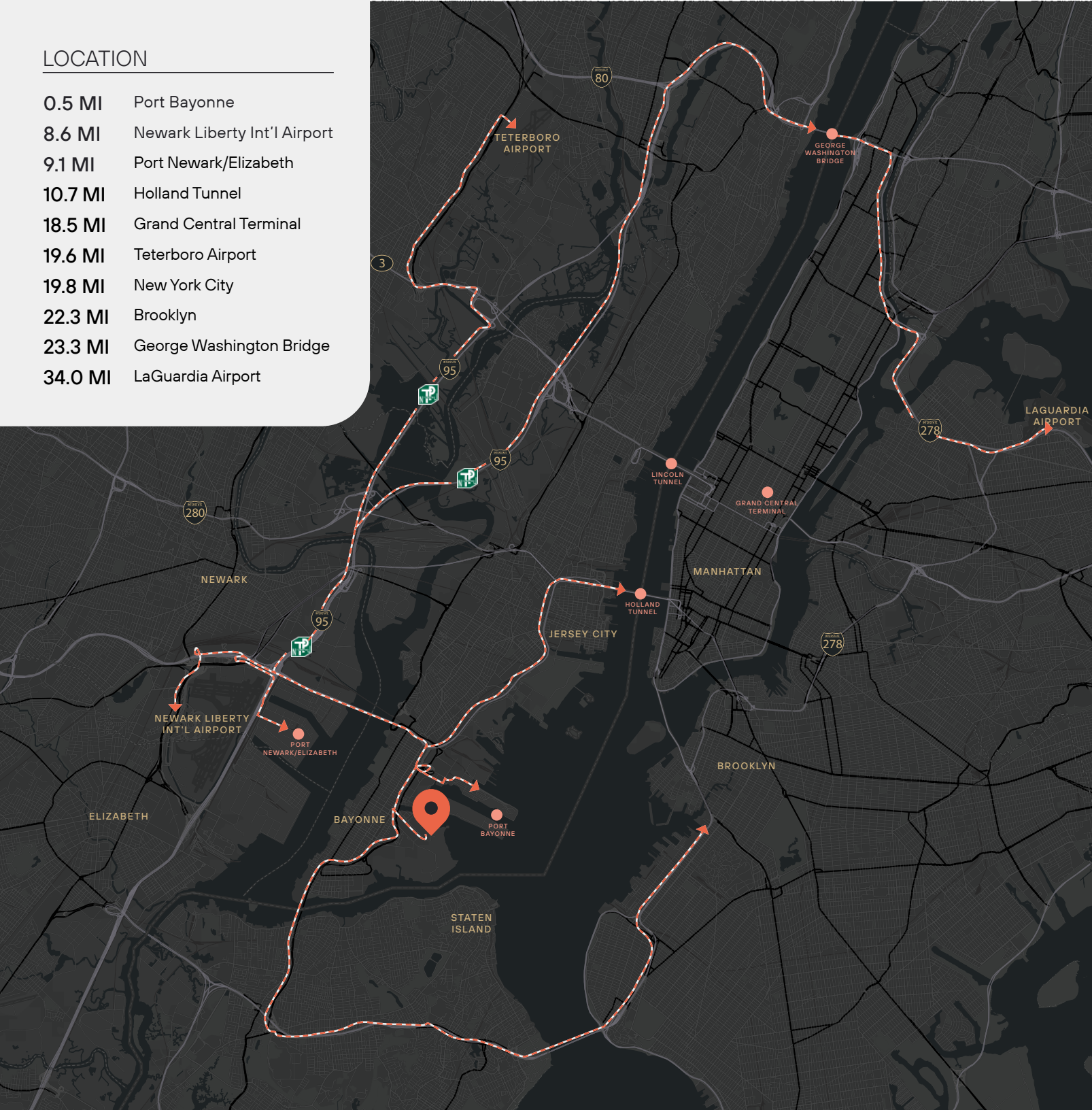


**PORT JERSEY-PORT AUTHORITY  
MARINE TERMINAL**  
1.4 MI



## LOCATION

0.5 MI	Port Bayonne
8.6 MI	Newark Liberty Int'l Airport
9.1 MI	Port Newark/Elizabeth
10.7 MI	Holland Tunnel
18.5 MI	Grand Central Terminal
19.6 MI	Teterboro Airport
19.8 MI	New York City
22.3 MI	Brooklyn
23.3 MI	George Washington Bridge
34.0 MI	LaGuardia Airport



For leasing information,  
please contact:

**CHARLES FERN**

[chuck.fern@cushwake.com](mailto:chuck.fern@cushwake.com)

+1 732 243 3101

**THOMAS D. TUCCI**

[thomas.tucci@cushwake.com](mailto:thomas.tucci@cushwake.com)

+1 732 243 3120

**NATALIE GORGA**

[natalie.gorga@cushwake.com](mailto:natalie.gorga@cushwake.com)

+1 732 243 3136



This is not an offer or acceptance of an offer to lease space. A lease will only be offered or made in a written agreement signed by landlord.

No representation or warranty of any kind is made by landlord unless set forth in a written definitive lease executed by the landlord.