

Stop Light Corner

Major East West Stop Light Development Site

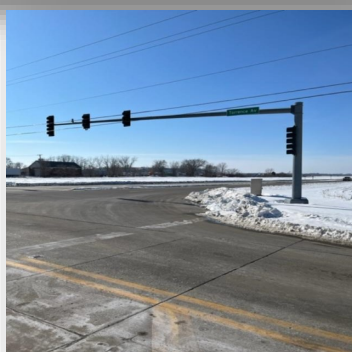
Vacant Land

FOR SALE



MR. KEN PEACH PH 708-764-2890
SERVING ILLINOIS & INDIANA SINCE 1994
833 W LINCOLN HWY SUITE E 340 SCHERVILLE IN 46375

20800 & 20810 Torrence Ave Lynwood IL 60411



PROPERTY OVERVIEW

TWO LAND PARCELS FOR DEVELOPMENT

North Parcel 20800 Torrence 5 +/- Acres
Zoned R-1A 160' +/- Frontage on Torrence &
1,200' +/- Frontage on Joe Orr Rd

South Parcel 20810 Torrence 6 +/- Acres
Zoned R-1A & B-3 206' +/- Frontage on Torrence
1,250' +/- Frontage and Joe Orr Rd
Small Area in SE Corner B-3 Regional
Commercial Business District
\$225,000.00 for all 11 acres

FOR MORE DETAILS CONTACT:

Ken Peach
ken.peach@aol.com

Cell 708-764-2890

DETAILS

Acres: 11.28
Zoned : R-1A & B-3
Real Estate Tax : \$260.00

FEATURES:

- Easy Expressway access
- Stop Light Corner
- New East West Road to Indiana
- All Dimensions subject to Survey

AREA DESCRIPTION:
30 minutes south of Chicago 5 minutes I-80 . Lots of
new development for Industrial use on the rise.

Priced at \$225,000.00

Coldwell Banker Commercial
833 W Lincoln Hwy Suite E340
Scherville, IN 46375

CBCWorldwide.com

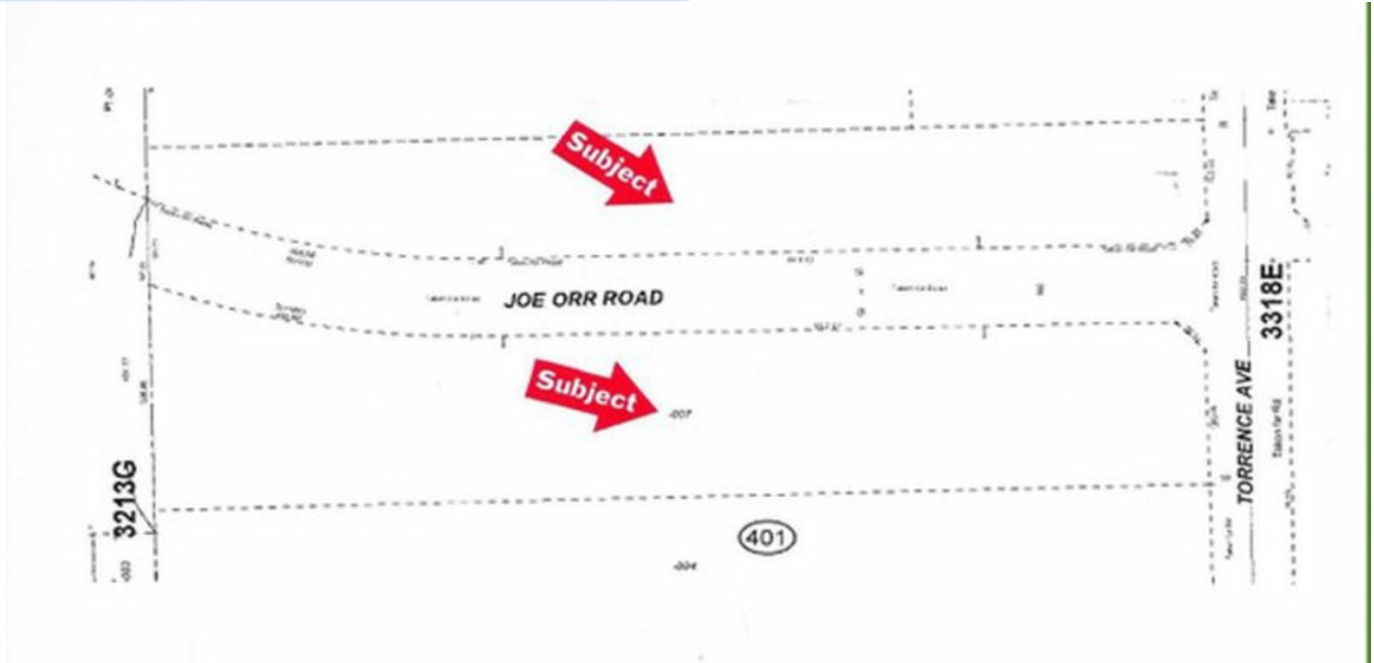
Coldwell Banker Commercial and the Coldwell Banker Commercial Logo are registered service marks
licensed to Coldwell Banker Real Estate LLC. Each Office is Independently Owned and Operated.

20800 & 20810 Torrence

FOR SALE



Lynwood IL 60411



ZONING

The subject is presently zoned R-1A, Single Family Residence in the Village of Lynwood. A small section in the south property section at the far southeast corner of the site with some frontage on Torrence Avenue is zoned B-3, Commercial District.

