

# PRIME, HIGHLY VISIBLE RESTAURANT OPPORTUNITY AVAILABLE!

## RESTAURANT SPACE FOR LEASE

2033 UNION STREET, SAN FRANCISCO, CA 94123



**CLICK HERE FOR VIRTUAL TOUR!**

**PLEASE CALL FOR PRICE**

**NET CHARGES: YES**

**COW HOLLOW DISTRICT**

BETWEEN BUCHANAN AND WEBSTER STREETS

**SIZE**

**±3,986 SF**

**BONUS PATIO: ±3,100 SF**

RETAIL SPACE FOR LEASE

**NOW AVAILABLE**

- AWESOME LOCATION IN THE HEART OF THE COW HOLLOW DISTRICT
- INCLUDES BONUS USABLE PATIO SPACE!
- COVETED TYPE 47 LIQUOR LICENSE FOR PURCHASE

**PROPERTY HIGHLIGHTS**

- Approximately 3,968 of interior restaurant space
- Strong Foot Traffic
- Excellent Window Lining
- Outstanding Block Tenants: Sephora, Equinox, illy Caffè, Kühn, Modern Citizen, Lorna Jane, SoulCycle, Sephora, Wildseed and Palm House



INCORPORATED | EST. 1922

**JEREMY BLATTEIS**

415.321.7493 | jfb@brsf.co | DRE #01460566

**DAVID BLATTEIS**

415.321.7488 | db@brsf.co | DRE #00418305

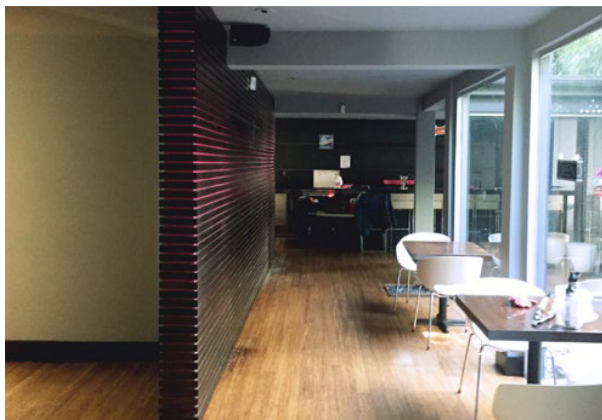
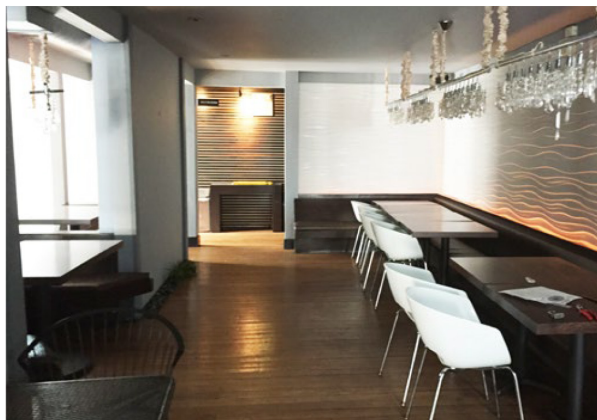
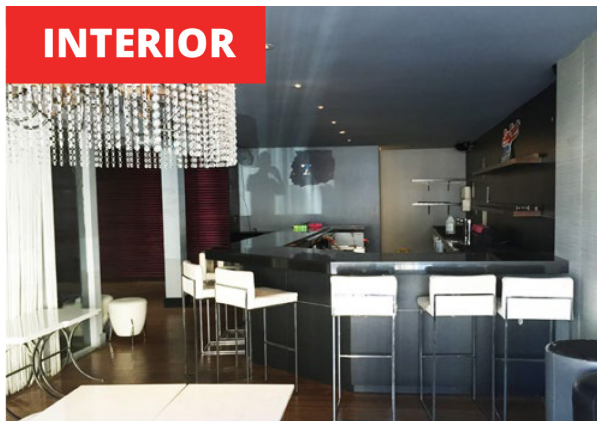
**sfretail.net**

This Statement with the information it contains is given with the understanding that all negotiations relating to the purchase, renting or leasing of the property described above shall be conducted through Blatteis Realty Company. The above information, while not guaranteed, has been secured from sources believed to be reliable. Blatteis Realty has not verified its accuracy and make no guarantees, warranty or representation regarding this information and it is published subject to the possibility of errors, omissions, changes of listing information including price, term, financing, or withdrawal without notice. We include projections, estimates, opinions and/or assumptions, for example only, and they may not represent current or future performance of the property. You should consult your tax and legal advisors before to verify the validity of estimates. All commercial or mixed-use property presented by Blatteis Realty is subject to local zoning codes and regulations. It is the sole responsibility and liability of tenants and property owners to obtain all applicable required building permits and/or certificates from the local city/town Planning Department before commercial property use can commence or a building can be built.

44 Montgomery Suite 1288, San Francisco, CA 94104 | t: 415.981.2844 | f: 415.981.4986 | info@brsf.co | DRE #01421282



## PROPERTY PHOTOS



**JEREMY BLATTEIS**

415.321.7493 | jfb@brsf.co | DRE #01460566

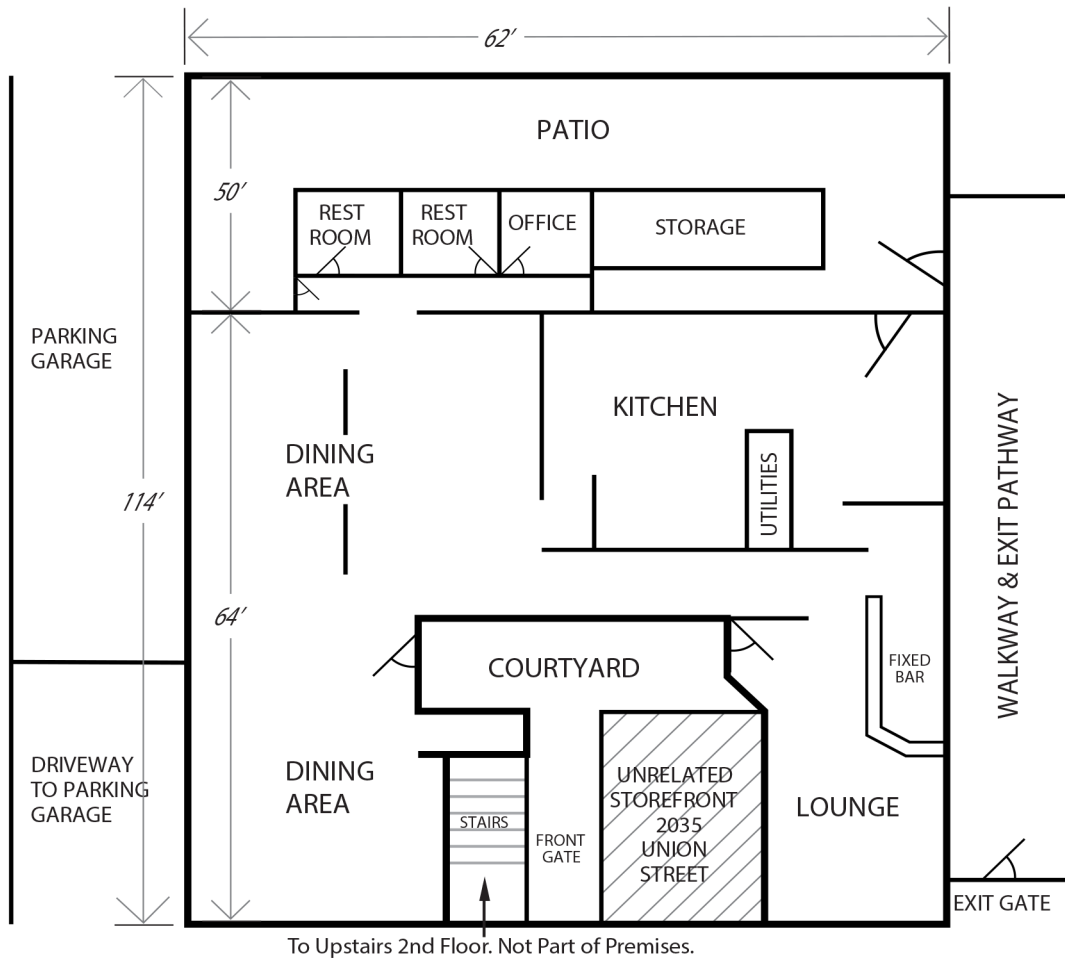
**DAVID BLATTEIS**

415.321.7488 | db@brsf.co | DRE #00418305

**sfretail.net**

This Statement with the information it contains is given with the understanding that all negotiations relating to the purchase, renting or leasing of the property described above shall be conducted through Blatteis Realty Company. The above information, while not guaranteed, has been secured from sources believed to be reliable. Blatteis Realty has not verified its accuracy and make no guarantees, warranty or representation regarding this information and it is published subject to the possibility of errors, omissions, changes of listing information including price, term, financing, or withdrawal without notice. We include projections, estimates, opinions and/or assumptions, for example only, and they may not represent current or future performance of the property. You should consult your tax and legal advisors before to verify the validity of estimates. All commercial or mixed-use property presented by Blatteis Realty is subject to local zoning codes and regulations. It is the sole responsibility and liability of tenants and property owners to obtain all applicable required building permits and/or certificates from the local city/town Planning Department before commercial property use can commence or a building can be built.

## FLOOR PLAN



62' X 64' = 3,968 SF

PATIO:  
56' X 62' = 3,100 SF

Restrooms are part of this

UNION STREET



**JEREMY BLATTEIS**

415.321.7493 | jfb@brsf.co | DRE #01460566

**DAVID BLATTEIS**

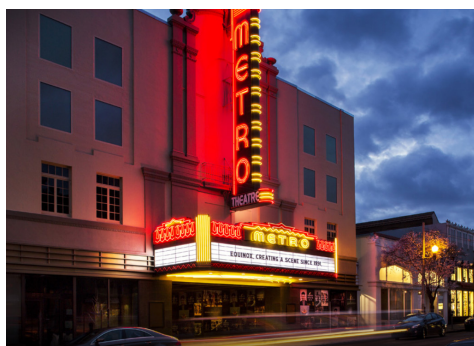
415.321.7488 | db@brsf.co | DRE #00418305

**sfretail.net**

This Statement with the information it contains is given with the understanding that all negotiations relating to the purchase, renting or leasing of the property described above shall be conducted through Blatteis Realty Company. The above information, while not guaranteed, has been secured from sources believed to be reliable. Blatteis Realty has not verified its accuracy and make no guarantees, warranty or representation regarding this information and it is published subject to the possibility of errors, omissions, changes of listing information including price, term, financing, or withdrawal without notice. We include projections, estimates, opinions and/or assumptions, for example only, and they may not represent current or future performance of the property. You should consult your tax and legal advisors before to verify the validity of estimates. All commercial or mixed-use property presented by Blatteis Realty is subject to local zoning codes and regulations. It is the sole responsibility and liability of tenants and property owners to obtain all applicable required building permits and/or certificates from the local city/town Planning Department before commercial property use can commence or a building can be built.



# A TOP SAN FRANCISCO LOCAL & TOURIST DESTINATION FOR SHOPPING, DINING AND ENTERTAINMENT!



EQUINOX



SEPHORA



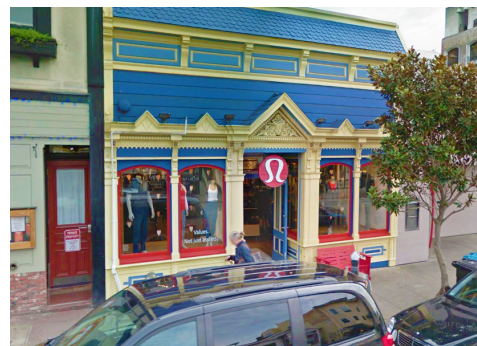
SOULCYCLE



JO MALONE LONDON



LOVING CUP



LULULEMON



PERRY'S



LORNA JANE



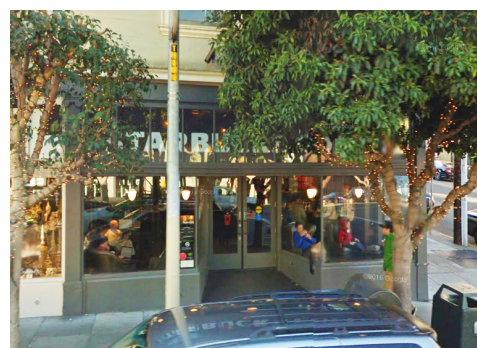
VUORI



WELLS FARGO



WILDSEED



STARBUCKS



INCORPORATED | EST. 1922

**JEREMY BLATTEIS**

415.321.7493 | jfb@brsf.co | DRE #01460566

**DAVID BLATTEIS**

415.321.7488 | db@brsf.co | DRE #00418305

**sfretail.net**

This Statement with the information it contains is given with the understanding that all negotiations relating to the purchase, renting or leasing of the property described above shall be conducted through Blatteis Realty Company. The above information, while not guaranteed, has been secured from sources believed to be reliable. Blatteis Realty has not verified its accuracy and make no guarantees, warranty or representation regarding this information and it is published subject to the possibility of errors, omissions, changes of listing information including price, term, financing, or withdrawal without notice. We include projections, estimates, opinions and/or assumptions, for example only, and they may not represent current or future performance of the property. You should consult your tax and legal advisors before to verify the validity of estimates. All commercial or mixed-use property presented by Blatteis Realty is subject to local zoning codes and regulations. It is the sole responsibility and liability of tenants and property owners to obtain all applicable required building permits and/or certificates from the local city/town Planning Department before commercial property use can commence or a building can be built.

44 Montgomery Suite 1288, San Francisco, CA 94104 | t: 415.981.2844 | f: 415.981.4986 | info@brsf.co | DRE #01421282



# UNION STREET TENANT MAP

GOUGH TO STEINER

FOR MORE LISTINGS,  
VISIT [SFRETAIL.NET](http://SFRETAIL.NET)

## OCTAVIA STREET

GetzWell Pediatrics	1800
Organic Shimmer	1804
SF Color Collective	1808
Bare Beauty Lounge	1810
Available Retail Space for Lease	1814
Available Salon Space for Lease	1816
Tonal Gym	1824
Sprout	1828
Caffe Union	1830
Available Retail Space for Lease	1832
KAIYO	1838
Topdrawer	1840
O'Dette Mortgage Group	1842
G Grover Interiors	1844
Morning Lavender	1846
Nanskin, Limited Watches, Inc., Various Office Spaces	1850
Ambiance	1858
Shannon Leahy Events	1862
Kryolan City San Francisco	1864
Retail Space	1870
UNTUCKIT	1872
Laser Away	1878
Available Retail Space for Lease	1882
	1888
Yoga Flow SF	1892
Neomodern	1898

## LAGUNA STREET

Wells Fargo Bank	1900
Karma Yoga	1906
Public Parking	1910
Birdies	1934
Available Office Space for Lease	1936
Available Retail Office Space for Lease	1942
Perry's	1944
State Farm Insurance	1952
Lashfully, The Caviar Co.,	1954
Various Medical Offices	1956
Redmint	1958
Bonobos	1964
	1974
Available Retail Space for Lease	1980
Available Salon/Office Space for Lease	
Extreme Pizza, The Stylist SF	
Solstice and Bar None	
Juice Shop	1994
Arthur Sebastian Hair Salon, Brown Sugar Boutique	1996
Gio Gelati	1998

## BUCHANAN STREET

Wildseed	2000
Marcello Watches, The Barber Shop	2030
Palm House, Union Street Shoe Repair	2032
Impact Builders, LLC	2034
Images of the North	2036
Milvali Salon, Rosewater Skin Care	2040
Titika Active Couture	2042
The Naked Market, G T Financial Group	2044
West Coast Leather, Cucional Orthodontics	2060
Various Chiropractic Offices	2064
Le Marcel Bakery	2066
	2070
Vuori	2070
Titika Active Couture	2072
	2078
Evolve Therapy	2082
B12 LOVE	2086
Various Retail Spaces	2088
Lorna Jane	2090

## WEBSTER STREET

Available Retail Space for Lease	2102
Practice SF Yoga - Might Minds	2104
Equity One	2106
Retail Space Available for Lease	2116
Anchor Mediation	2118
Available Retail Space for Lease	2120
Hint, Inc., Reid's Tailoring, Marla Dell Talent	2124
Available Restaurant Space for Lease	2136
Brixton	2140
Available Retail Space for Lease	2150
Available Retail Space for Lease	2154
Verizon, Pressed Juicery	2162
Union Street Papery	2166
Alana Leigh Designs	
Casper Mattress	2174
Little Gem	2184
Luke's Grocery	2190
Michael's Wine & Spirits	2198

## FILLMORE STREET

Prudential California Realty, The Bud Stop	2200
Law Offices	2204
1887 Dance Shop	2206
Allstate Insurance	2208
Retail Space Available for Lease	2224
Ace Physical Therapy	2238
Wanderlust Salon, Bella Bridesmaid,	2250
Jutta Reichart Associates, Union Street Dental Care	
Available Retail Space for Lease	2254
True Jerkey, Lovely Bride	2266
Lili Henry - Personal Fashion Stylist	2272
Available Retail Space for Lease	2274
2nd Floor Office Space for Lease	2276
Danielle	2278
Legal Offices	2280
Various Clinical Offices	2282
Bamboo Wellness Salon	2284
Great Tan	2286
eSalon	2288
Jenkins Garage Door Repair	2292
Rose's Cafe	2298

Pane e Vino Trattoria	1715
Crunch Fitness	1725
CryoSF	1735
City Living SF	1737
TC Jewelers	1739
Retail Space for Lease	
VW Nail Care	1745
Cow Hollow Shoe Repair	1747
Chez Berlue, Partners in Crime	1749
Salon Macias, Red Union Salon	1757
Marina Dental Care	1763
ML Hair Studio	1771
The Lotus Method	1775
Roam Artisan Burgers	1785
Available Restaurant Space	1787
Veo Optics	1793

Fenzi Uomo	1801
B&A Estate	1803
Capannina	1809
Acorn Home Furnishings & Design	1815
One Medical	1823
SKIN Medical Spa	1825
Winnie Couture	1827
LA Paul & Associates, BACK OF THE HOUSE, Inc.	1829
Alma's European Skincare	1831
Carats & Stones, KTD Fine Jewelers	1833
Candid Studio	1837
Available Retail Space for Lease	1843
Tamashisoul Sushi Bar	1849
Available Bar Space for Lease	1851
Available Retail Space for Lease	1861
Jest Jewels	1869
Available Restaurant For Lease	1875
Drip Doctors (Medical Spa)	1877
Sunglass Hut	1887
Berenice Hair Salon, Thermal Reconditioning SF	1889
Doob Group	1895
Starbucks	1899



Bus Stop Saloon	1901
Oxygen Massage, Flourish Skin and Wax	1905
Available Retail Space for Lease	1907
Epicurean Trader	1909
La Boulangerie	1909
Italian Homemade Co.	1919
Office Space for Lease	1929
Union Street Jewelers,	1931
Zen Beauty Spa, Jinza Couture	1933
Dreamy Angels	1943
B Brow Lounge	1945
HELPER'S Artisan Bazaar	1947
Mabel Chong	1949
Closet 1951	1951
Urban Remedy	1957
Dahlia, High Society, Golden Lotus	1969
Vegan Picnic, Pacific Heights Place	1977
The Blue Light	1979
Lululemon Athletica	1981
Bank of America	1995

LA BOULANGERIE  
- SAN FRANCISCO -



2001	Union Street Plaza & Garage
	Comerica Bank, Firuze
	Shaw Shoes, Hunan Empire
	ARTEMIA Communications Inc
2001	Various Commercial and Medical Offices
2031	Upscale Construction
	FolioAvenue Publishing Service
	Bien-Etre Beaute, Mina's Tailor Studio,
	Greenforce Clean Team, Luxe Premier Travel
2033	Available Restaurant for Lease
2035	Available Retail Space for Lease
2055	Equinox, illy Caffè, Earthbar
2071	Kühl
2083	Sephora
2087	Serenity Wellness Spa
2095	Soul Cycle

2033 UNION STREET

EQUINOX  
SEPHORA  
SOULCYCLE

2101	Retail/Office Space
2103	Available
2107	For Lease
2113	Lash and Lab
2115	Joy Joy Nail
2117	Motion Wireless & Gifts
2127	isalis, Available Retail Space for Lease
2133	Available Retail Space for Lease
2135	AT&T Store
2147	Leased
2149	Anomie, ATYS Contemporary Living
2157	Jo Malone
2159	Available Retail Space for Lease
2161	Vera Weiler Electrolysis
2163	Available Retail Space for Lease
2165	West Coast Wine & Cheese, Gunilla Skin Butik
2167	STYLEDASH Beauty Lounge
2181	The Sill, Balanced Bites
2185	Cameron James Salon
2187	Available Retail Space for Lease
2189	Eyes in Disguise
2191	Union Street Coffee Roastery

2201	Loving Cup
2203	Images For Hair
2205	Le Bouquet Flower Shop
2213	Nails 2001
2217	Sofa U Love
2223	Gamine
2225	Various Clinical Services, The Pure Skin
2229	Union Street Inn
2247	Teevan Restoration
2253	Available Retail Space for Lease
2263	Available Retail Space for Lease
2271	Wrecking Ball Coffee Roasters
2277	GALA Boutique
2285	Neja Cosmetics
2289	Fondue Lab
2299	Marina Submarine