

900 E. Atlantic Ave #12, Delray Beach, FL 33483

1,939 SF Office/Retail • Prime Location • Ample Parking

OFFICE SPACE AVAILABLE FOR LEASE

561.352.9406



### Property Highlights

- Prime Location in Downtown Delray Beach
- Ample Parking
- High Pedestrian Volume
- Lease NNN: RATE/TERM NEGOTIABLE
- Year Built 1979
- Renovated 2021
- Net Rentable Area (NRA): 1,989
- CAM: \$19.11 /SF/YR



Call Manny Gutierrez for more information at 561-352-9406



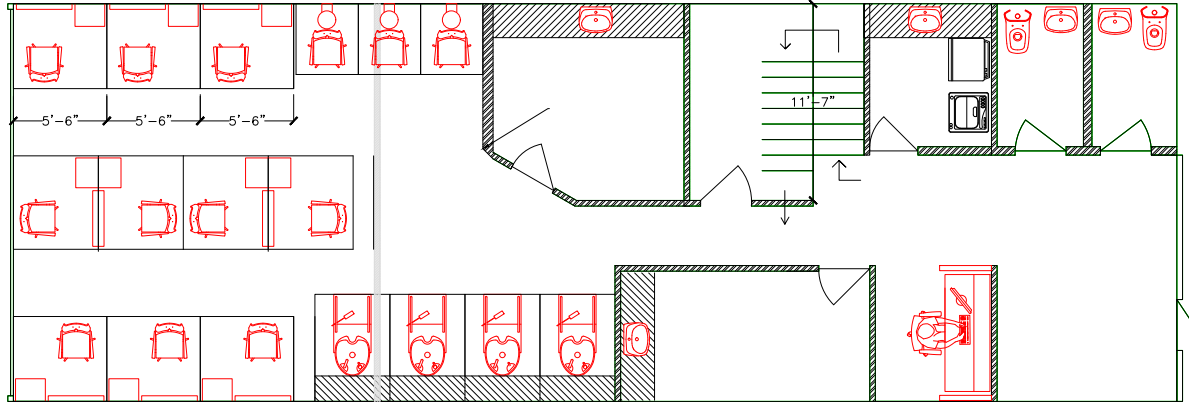
Manny Gutierrez  
President & Broker

Contact me today  
561-352-9406  
manny@primerealestatefl.com

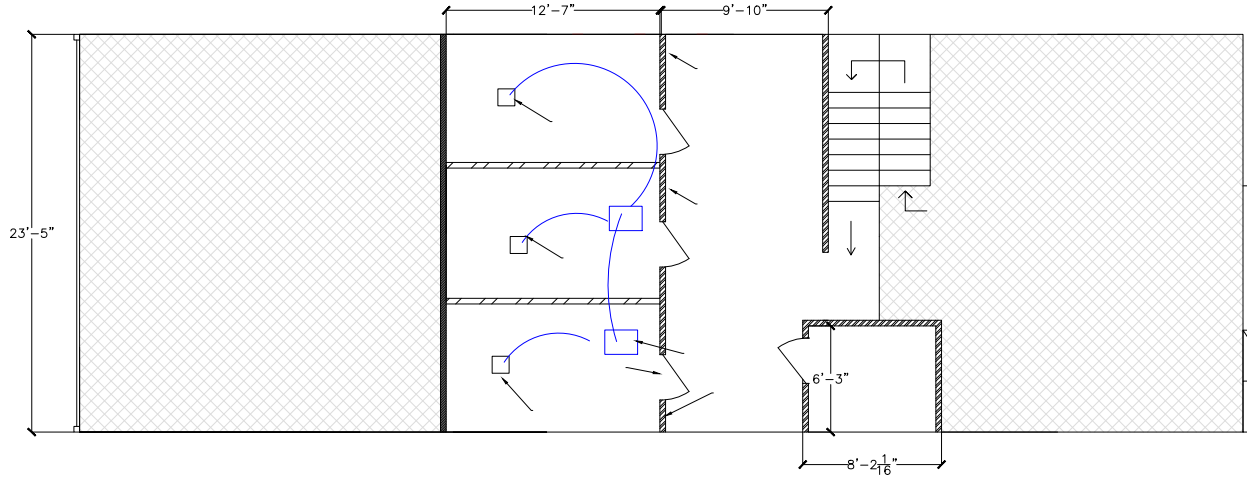


PRIME REAL ESTATE  
*of Florida*

[www.PrimeRealEstateFL.com](http://www.PrimeRealEstateFL.com)



**LIVING AREA:**  
**DOWN STAIRS = 1429 SF**  
**UPSTAIRS = 560 SF**  
**TOTAL = 1989 SF**



General Notes

LICENSED PROFESSIONAL		
CHRIS R. BEALE, P.E. FLORIDA LICENSE NUMBER 91359		
No.	Revision/Issue	Date

Firm Name and Address  
 BEALECON ENGINEERING ,LLC.  
 7491 N FEDERAL HWY  
 STE C-5133  
 BOCA RATON, FL 33487

Project Name and Address  
 AMANDA MAJOR STUDIOS  
 900 E ATLANTIC AVE #12  
 DELRAY BEACH FL 33445

Project	Sheet
Date 2-5-2021	M
Scale As Noted	