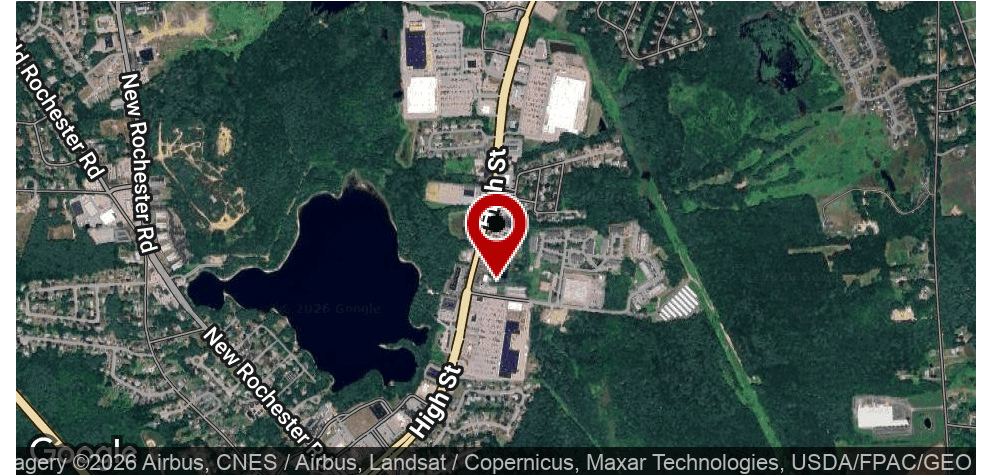


LAND FOR SALE

DEVELOPMENT SITE PRE-APPROVED FOR 4,500 SF BUILDING FOOTPRINT

472 High Street, Somersworth, NH 03878



PROPERTY DESCRIPTION

Developable flat site, unit "B" is part of a condo association. With good soils, this property is approved for development and construction of a building with a 4,500 SF footprint. Consisting of 3 total commercial units, the main retail unit is proposed for 3,500+/- SF and an additional 2 retail/commercial units of 500+/- SF each.

This exceptional location and visibility is in one of the fastest growing retail regions. It's a great opportunity with exceptional visibility by over 24,400 vehicles per day and heavily surrounded by big box and national retail tenants. Additional info and plans available.

PROPERTY HIGHLIGHTS

- Location serves both Dover and Somersworth
- Surrounded by big box and national retail tenants

OFFERING SUMMARY

Sale Price:	\$445,000
Lot Size:	0.783 Acres

DEMOGRAPHICS	1 MILE	2 MILES	3 MILES
Total Households	1,514	7,264	14,510
Total Population	3,317	15,728	31,298
Average HH Income	\$88,880	\$85,912	\$82,474

We obtained the information above from sources we believe to be reliable. However, we have not verified its accuracy and make no guarantee, warranty or representation about it. It is submitted subject to the possibility of errors, omissions, change of price, rental or other conditions, prior sale, lease or financing, or withdrawal without notice. We include projections, opinions, assumptions or estimates for example only, and they may not represent current or future performance of the property. You and your tax and legal advisors should conduct your own investigation of the property and transaction.

VIKTORIA ALKOVA
Commercial Specialist, MiCP
O: 603.610.8500
C: 646.577.1194
viktoria@kwclcg.com
NH #074657

ETHAN ASH
Commercial & Investment Specialist, MiCP
O: 603.610.8500 X1430
C: 603.707.2319
ethan.ash@kw.com
NH #071469

DAVE GARVEY
Managing Director
O: 603.610.8523
C: 603.491.2854
dave@kwclcg.com
NH #004637

KELLER WILLIAMS COASTAL REALTY
603.610.8500
750 Lafayette Rd.
Suite 201 - Coastal Land & Commercial Group
Portsmouth, NH 03801

Each Office Independently Owned and Operated kwclcg.com

LAND FOR SALE

SITE PRE-APPROVED FOR 4,500 SQFT BUILDING FOOTPRINT

472"B" High Street & Tri-City Road, Somersworth, NH 03878



We obtained the information above from sources we believe to be reliable. However, we have not verified its accuracy and make no guarantee, warranty or representation about it. It is submitted subject to the possibility of errors, omissions, change of price, rental or other conditions, prior sale, lease or financing, or withdrawal without notice. We include projections, opinions, assumptions or estimates for example only, and they may not represent current or future performance of the property. You and your tax and legal advisors should conduct your own investigation of the property and transaction.

VIKTORIA ALKOVA
Commercial Specialist, MiCP
O: 603.610.8500
C: 646.577.1194
viktorija@kwclcg.com
NH #074657

ETHAN ASH
Commercial & Investment Specialist, MiCP
O: 603.610.8500 X1430
C: 603.707.2319
ethan.ash@kw.com
NH #071469

DAVE GARVEY
Managing Director
O: 603.610.8523
C: 603.491.2854
dave@kwclcg.com
NH #004637

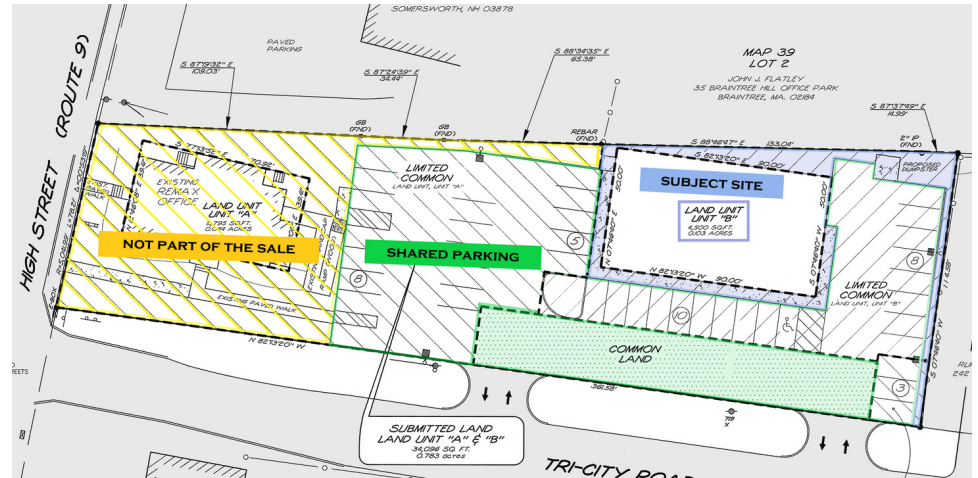
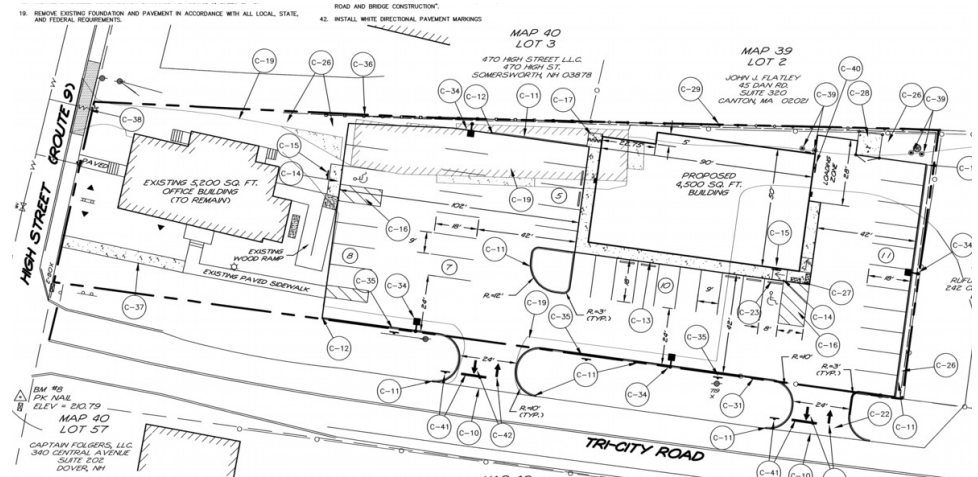
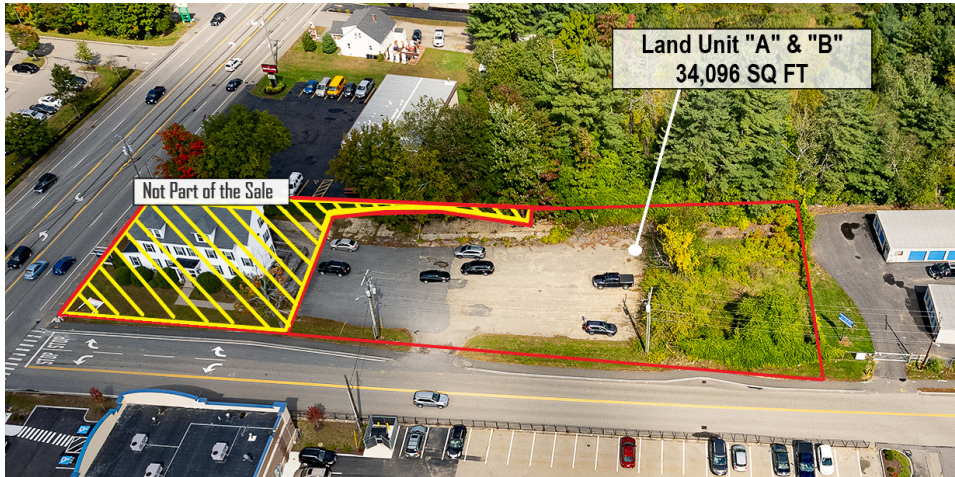
KELLER WILLIAMS COASTAL REALTY
603.610.8500
750 Lafayette Rd.
Suite 201 - Coastal Land & Commercial Group
Portsmouth, NH 03801

Each Office Independently Owned and Operated kwclcg.com

LAND FOR SALE

SITE PRE-APPROVED FOR 4,500 SQFT BUILDING FOOTPRINT

472 High Street, Somersworth, NH 03878



We obtained the information above from sources we believe to be reliable. However, we have not verified its accuracy and make no guarantee, warranty or representation about it. It is submitted subject to the possibility of errors, omissions, change of price, rental or other conditions, prior sale, lease or financing, or withdrawal without notice. We include projections, opinions, assumptions or estimates for example only, and they may not represent current or future performance of the property. You and your tax and legal advisors should conduct your own investigation of the property and transaction.

VIKTORIA ALKOVA
 Commercial Specialist, MiCP
 O: 603.610.8500
 C: 646.577.1194
 viktoriam@kwclcg.com
 NH #074657

ETHAN ASH
 Commercial & Investment Specialist, MiCP
 O: 603.610.8500 X1430
 C: 603.707.2319
 ethan.ash@kw.com
 NH #071469

DAVE GARVEY
 Managing Director
 O: 603.610.8523
 C: 603.491.2854
 dave@kwclcg.com
 NH #004637

KELLER WILLIAMS COASTAL REALTY
 603.610.8500
 750 Lafayette Rd.
 Suite 201 - Coastal Land & Commercial Group
 Portsmouth, NH 03801

Each Office Independently Owned and Operated kwclcg.com

LAND FOR SALE

SITE PRE-APPROVED FOR 4,500 SQFT BUILDING FOOTPRINT

472 High Street, Somersworth, NH 03878



PROPERTY DESCRIPTION

Developable flat site, unit "B" is part of a condo association. With good soils, this property is approved for development and construction of a building with a 4,500 SF footprint. Consisting of 3 total commercial units, the main retail unit is proposed for 3,500+/- SF and an additional 2 retail/commercial units of 500+/- SF each. This exceptional location and visibility is in one of the fastest growing retail regions. It's a great opportunity with exceptional visibility by over 24,400 vehicles per day and heavily surrounded by big box and national retail tenants. Additional info and plans available.

LOCATION DESCRIPTION

Immediately off the Spaulding Turnpike, this busy intersection has tremendous retail traffic with many big box and national retail tenants. This location serves both Dover, which is the fastest growing city in New Hampshire, and Somersworth, a small city which also serves many Maine border towns. Somersworth is located in the center of New Hampshire's fastest growing region. The city offers a strategic location for new businesses that is affordable, has all the amenities of a big city with the feel of small town charm, and offers an attractive quality of life. Somersworth is ideally situated in New Hampshire's Seacoast with easy Interstate access to Portland, Maine (50 min) Boston, Massachusetts (1h 15 min), only 25 minutes from Portsmouth NH, and all key locations in-between! As well as a convenient 8 minute drive from Skyhaven Airport.

LAND FOR SALE

SITE PRE-APPROVED FOR 4,500 SQFT BUILDING FOOTPRINT

472 High Street, Somersworth, NH 03878



We obtained the information above from sources we believe to be reliable. However, we have not verified its accuracy and make no guarantee, warranty or representation about it. It is submitted subject to the possibility of errors, omissions, change of price, rental or other conditions, prior sale, lease or financing, or withdrawal without notice. We include projections, opinions, assumptions or estimates for example only, and they may not represent current or future performance of the property. You and your tax and legal advisors should conduct your own investigation of the property and transaction.

VIKTORIA ALKOVA
Commercial Specialist, MiCP
O: 603.610.8500
C: 646.577.1194
viktorija@kwclcg.com
NH #074657

ETHAN ASH
Commercial & Investment Specialist, MiCP
O: 603.610.8500 X1430
C: 603.707.2319
ethan.ash@kw.com
NH #071469

DAVE GARVEY
Managing Director
O: 603.610.8523
C: 603.491.2854
dave@kwclcg.com
NH #004637

KELLER WILLIAMS COASTAL REALTY
603.610.8500
750 Lafayette Rd.
Suite 201 - Coastal Land & Commercial Group
Portsmouth, NH 03801

Each Office Independently Owned and Operated kwclcg.com

Population Trends

472 High St, Somersworth, New Hampshire, 03878 (30 minutes)

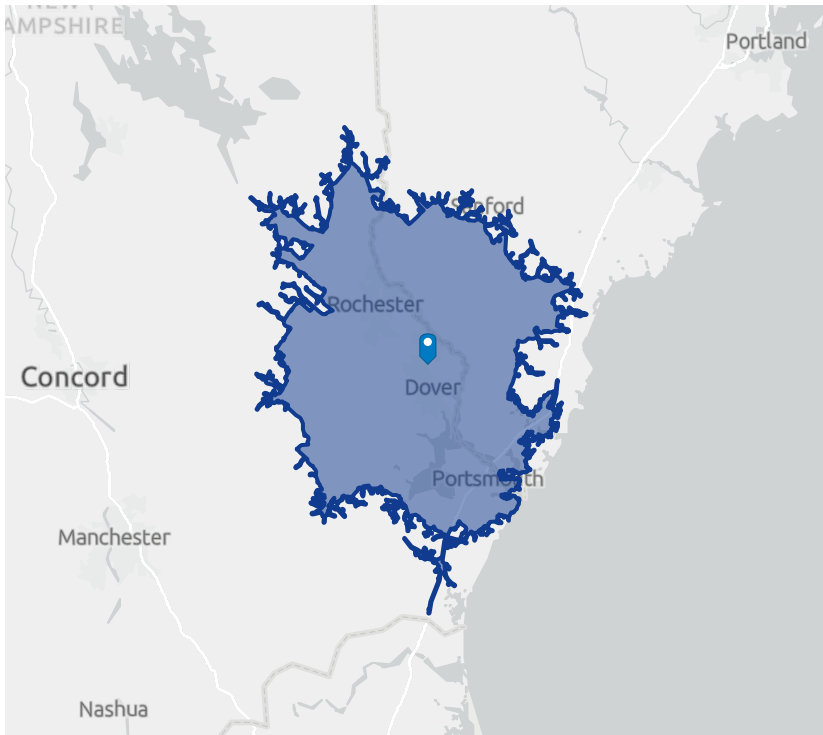
472 High St, Somersworth, New Hampshire, 03878

Drive time of 30 minutes

Prepared by Esri & Viktoria Alkova

Latitude: 43.22862

Longitude: -70.88280



POPULATION TRENDS AND KEY INDICATORS

472 High St, Somersworth, New Hampshire, 03878
Drive time of 30 minutes

233,091	95,140	2.35	41.3	\$83,452	\$341,439	110	95	25
Population	Households	Avg Size Household	Median Age	Median Household Income	Median Home Value	Wealth Index	Housing Affordability	Diversity Index

MORTGAGE INDICATORS



\$13,089

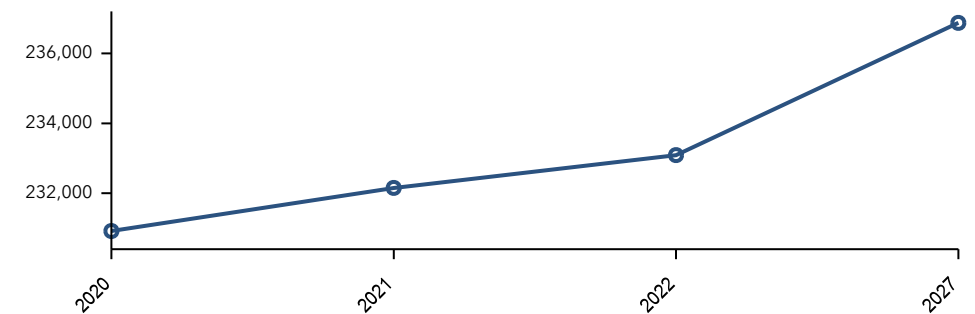
Avg Spent on Mortgage & Basics



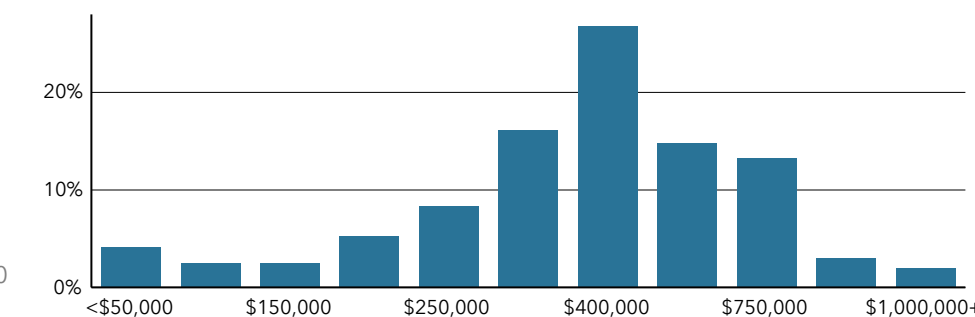
21.6%

Percent of Income for Mortgage

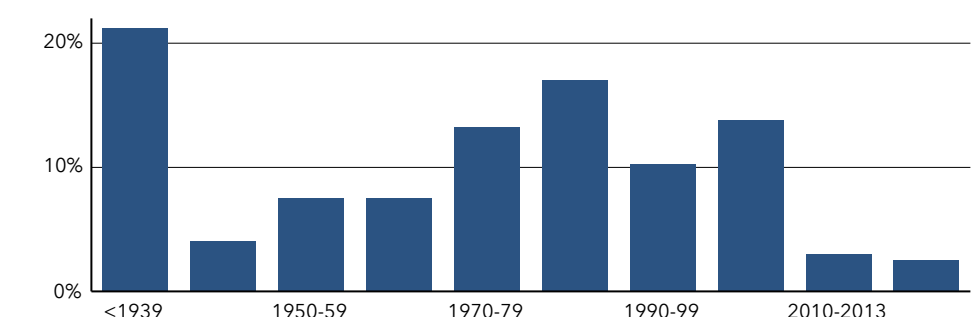
Historical Trends: Population



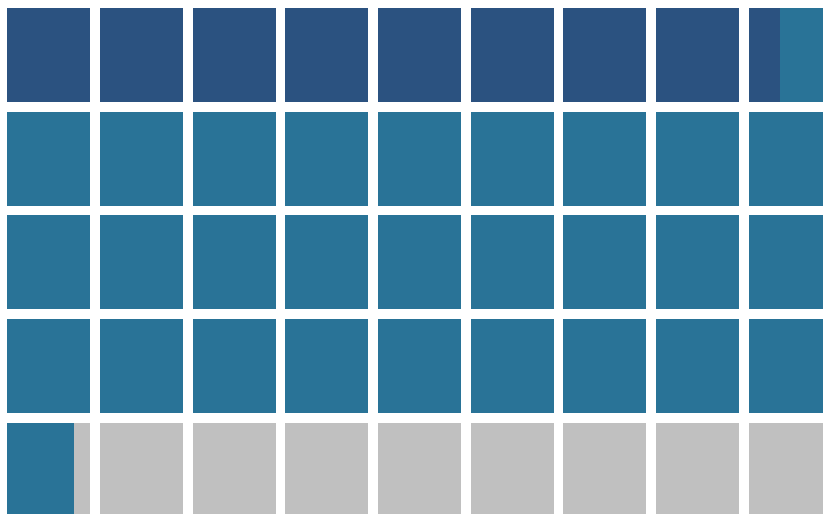
Home Value



Housing: Year Built



POPULATION BY AGE



■ Under 18 (19%) ■ Ages 18 to 64 (63%) ■ Aged 65+ (18%)

POPULATION BY GENERATION



6.0%

Greatest Gen:
Born 1945/Earlier



22.4%

Baby Boomer:
Born 1946 to 1964



20.7%

Generation X:
Born 1965 to 1980



22.5%

Millennial:
Born 1981 to 1998



22.7%

Generation Z:
Born 1999 to 2016



5.7%

Alpha: Born
2017 to Present



This infographic contains data provided by Esri, Esri-U.S. BLS, ACS

The vintage of the data is 2022, 2027, 2016-2020 © 2022 Esri

KEY FACTS

233,091

Population

41.3

Median Age



Average Household Size

95,140

2019 Total Households

INCOME



\$83,452

Median Household Income



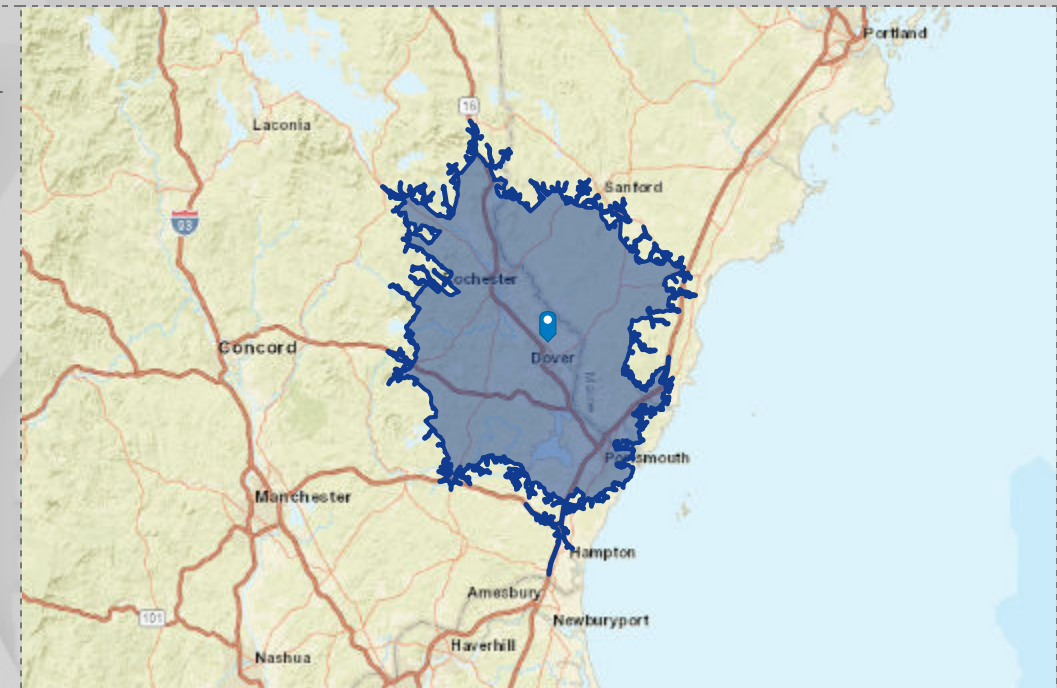
\$46,150

Per Capita Income



\$205,860

Median Net Worth



HOUSING STATS



\$341,439

Median Home Value



MISSING

Average Spent on Mortgage & Basics



\$1,039

Median Contract Rent

BUSINESS



12,114

Total Businesses



129,373

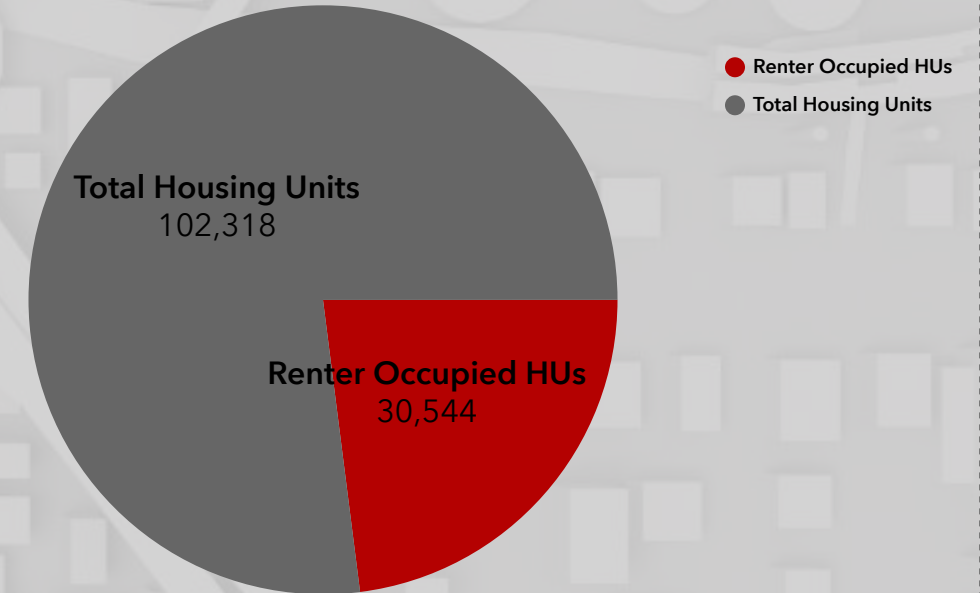
Employed Civilian Population Age 16+



129,655

Daytime Population: Workers

2019 Key Demographic Indicators (Esri)



Tapestry Segments

	6A Green Acres 10,523 households	11.1% of Households	▼
	8B Emerald City 8,222 households	8.6% of Households	▼
	5C Parks and Rec 8,021 households	8.4% of Households	▼

Race and Ethnicity

The largest group: White Alone (89.18)

The smallest group: Pacific Islander Alone (0.04)

Indicator ▲	Value	Diff	Bar Chart	
White Alone	89.18	+1.03	[Red bar]	
Black Alone	1.01	-0.16	[Grey bar]	
American Indian/Alaska Native Alone	0.21	-0.03	[Grey bar]	
Asian Alone	2.97	-0.54	[Grey bar]	
Pacific Islander Alone	0.04	0	[Grey bar]	
Other Race	1.02	-0.07	[Grey bar]	
Two or More Races	5.57	-0.24	[Grey bar]	
Hispanic Origin (Any Race)	2.85	-0.20	[Grey bar]	

Bars show deviation from **Strafford County**

POPULATION



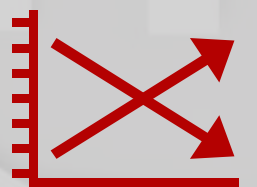
233,091

2018 Total Population (Esri)



236,872

2023 Total Population (Esri)



0.32%

2018-2023 Population: Annual Growth Rate (Esri)