

**SugarOak**  
Realty, LLC®

# WATERFORD ONE

2820 WATERFORD LAKE DR, MIDLOTHIAN, VA 23112



**NOW LEASING | OFFICE SPACE | 2,251 - 8,132 SF**

**ALLAN SHARRETT**

VICE PRESIDENT, SALES/LEASING  
804.308.8825  
ALLANS@SUGAROAK.COM

**ANDY WALSH**

PRESIDENT/PRINCIPAL BROKER  
804.308.1603  
ANDYW@SUGAROAK.COM

# WATERFORD ONE

2820 WATERFORD LAKE DR, MIDLOTHIAN, VA 23112



## PROPERTY HIGHLIGHTS

- 46,929 SF Class A Lakefront Building
- Convenient Location at the Intersection of Route 288 & Route 76
- Lake Views & Walking Trails
- Complete Lobby Renovation
- ADA Accessible



# WATERFORD ONE

2820 WATERFORD LAKE DR, MIDLOTHIAN, VA 23112



## RENOVATED INTERIOR



[www.sugaroak.com](http://www.sugaroak.com) | 2809 Emerywood Pkwy, #110 | Richmond, VA 23294 | 804.956.3448

ALLAN SHARRETT  
Vice President, Sales/Leasing  
804.901.4454  
[AllanS@sugaroak.com](mailto:AllanS@sugaroak.com)

ANDY WALSH  
President/Principal Broker  
571.237.0264  
[AndyW@sugaroak.com](mailto:AndyW@sugaroak.com)

# WATERFORD ONE

2820 WATERFORD LAKE DR, MIDLOTHIAN, VA 23112



## AVAILABLE FLOORPLANS

### FIRST FLOOR

- SUITE 102 - 4,000-8,132 SF



# WATERFORD ONE

2820 WATERFORD LAKE DR, MIDLOTHIAN, VA 23112



## SUITE 102 | 4,000-8,132 SF



# WATERFORD ONE

2820 WATERFORD LAKE DR, MIDLOTHIAN, VA 23112



## AVAILABLE FLOORPLANS

### SECOND FLOOR

- SUITE 203 - 2,251 SF
- SUITE 210 - 2,696 SF

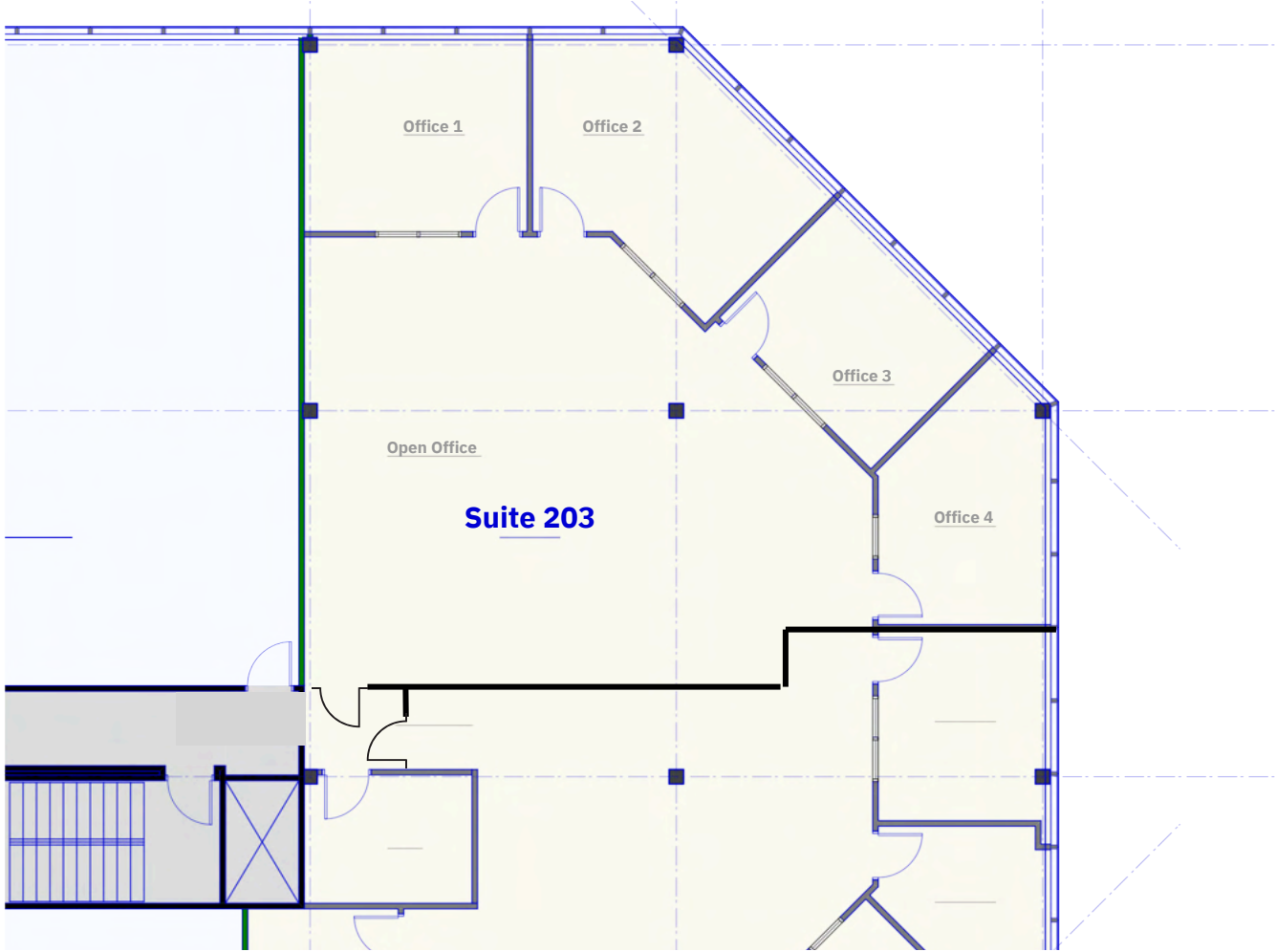


# WATERFORD ONE

2820 WATERFORD LAKE DR, MIDLOTHIAN, VA 23112



## SUITE 203 | 2,251 SF

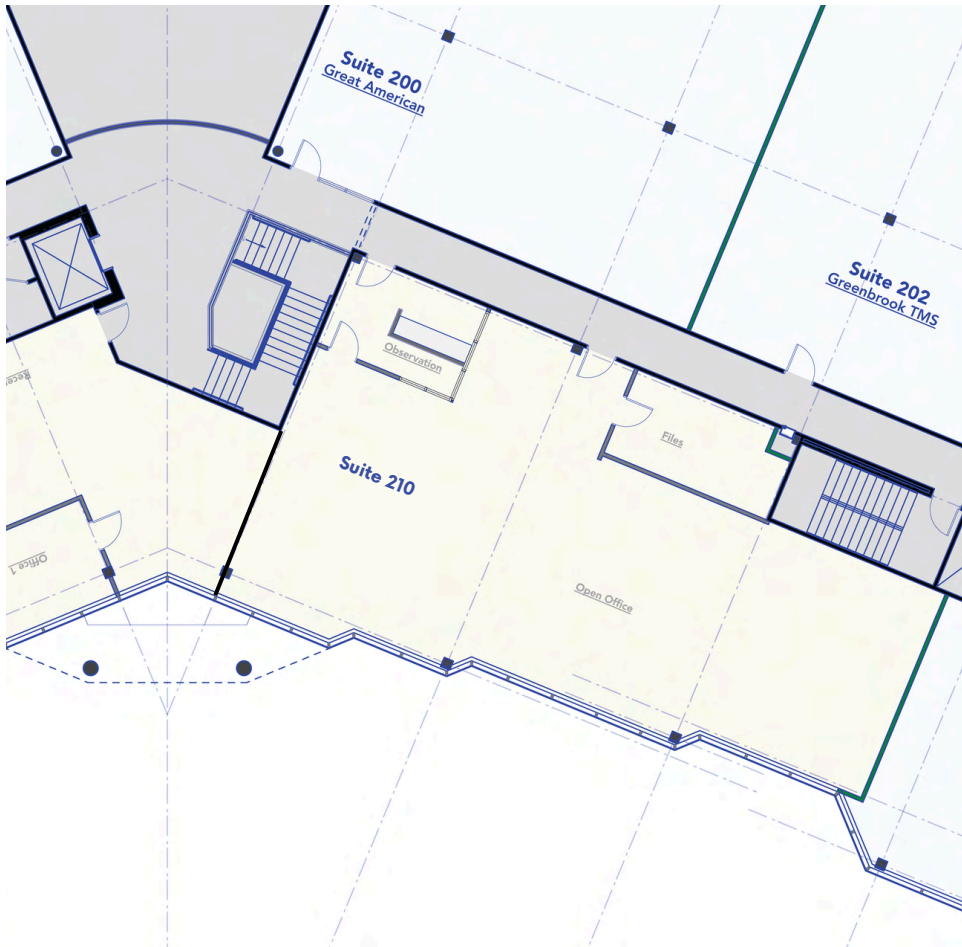


# WATERFORD ONE

2820 WATERFORD LAKE DR, MIDLOTHIAN, VA 23112



SUITE 210 | 2,696 SF



[www.sugaroak.com](http://www.sugaroak.com) | 2809 Emerywood Pkwy, #110 | Richmond, VA 23294 | 804.956.3448

ALLAN SHARRETT  
Vice President, Sales/Leasing  
804.901.4454  
[AllanS@sugaroak.com](mailto:AllanS@sugaroak.com)

ANDY WALSH  
President/Principal Broker  
571.237.0264  
[AndyW@sugaroak.com](mailto:AndyW@sugaroak.com)



# WATERFORD ONE

2820 WATERFORD LAKE DR, MIDLOTHIAN, VA 23112



## LOCATION

