

KARBANK

REAL ESTATE COMPANY

INDUSTRIAL | OFFICE | COMMERCIAL
BROKERAGE & DEVELOPMENT
ESTABLISHED 1990

4,850 SF
FOR LEASE



14021 WEST 95TH STREET
LENEXA, KS
OFFICE AND SHOWROOM

FEATURES

- 1,830 SF office/showroom area
- 16' clear ceiling height
- 1 dock-high loading door
- Ample parking
- Premium access and visibility
- Available 12/17/2022

BASE RATE:
\$8.00/SF NNN

NET CHARGES (est.):
Taxes: \$2.41/SF
Insurance: \$0.13/SF
CAM: \$2.44/SF

For more information
please contact

PAUL FOGEL, SIOR
pf@karbank.com

JOHN DELZER
jd@karbank.com

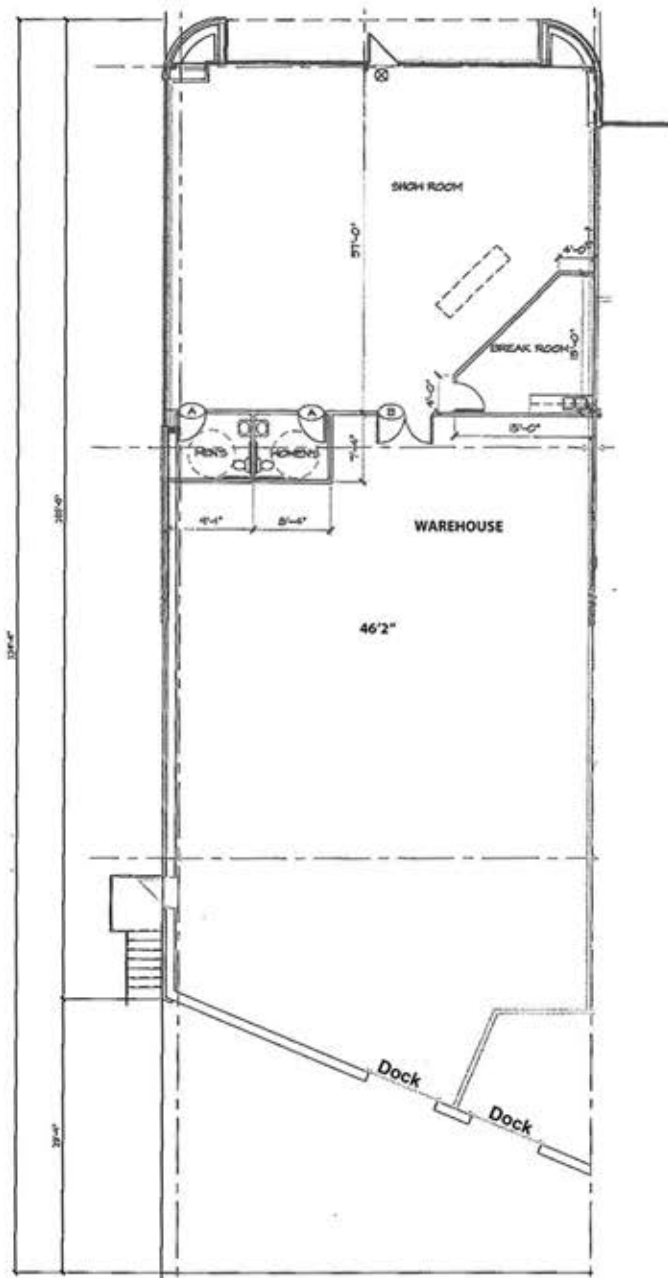
THE BARNEY BUILDING
2000 SHAWNEE MISSION PARKWAY
SUITE 400
MISSION WOODS, KS 66205

816.221.4488
816.221.4494

KARBANK.COM

Information furnished regarding property is from sources deemed reliable but no warranty or representation is made as to the accuracy thereof and same is submitted subject to errors, omissions, prior sale or lease or withdrawal without notice.





KARBANK
REAL ESTATE COMPANY

1 THE BARNEY BUILDING
2000 SHAWNEE MISSION PARKWAY | SUITE 400
MISSION WOODS, KANSAS 66205
KARBANK.COM

ADDRESS **14021 W. 95th Street
Lenexa, KS**

PLAN TYPE
Floor Plan

TOTAL SF
4,850

TOTAL OFFICE SF
1,830

DATE
8-10-2022

SCALE

