

FOR SALE

809 PROFESSIONAL PLACE WEST, UNIT 104
Chesapeake, VA 23320



S.L. NUSBAUM
REALTY CO.



AUSTIN GLASER

Associate

O. 757.271.3160

C. 757.675.0321

aglaser@slnusbaum.com

ANTHONY GRECCO

Associate

O. 757.452.6133

C. 757.235.1496

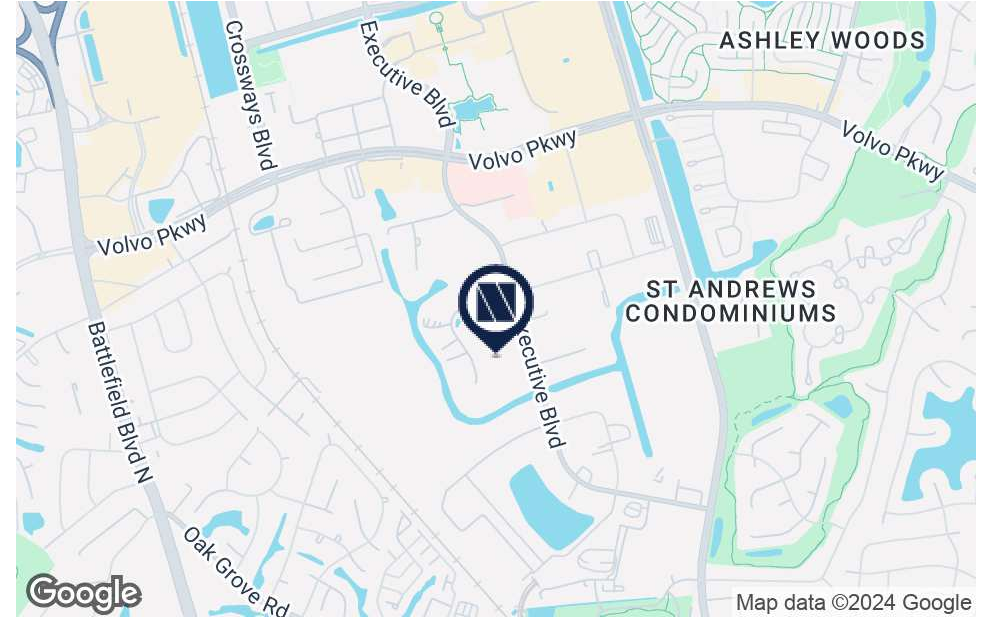
agrecco@slnusbaum.com

EXECUTIVE SUMMARY

809 PROFESSIONAL PLACE WEST, UNIT 104
Chesapeake, VA 23320



S.L. NUSBAUM
REALTY CO.



OFFERING SUMMARY

Sale Price:	\$330,000
Building Size:	2,308 SF
Price / SF:	\$142.98
Year Built:	1988
Renovated:	2020
Zoning:	PUD (Planned Unit Development)

PROPERTY OVERVIEW

This two-story 2,308 square foot industrial condominium caters to a wide range of business needs. The unit features a spacious interior with dedicated office areas. Located in close proximity to Summit Pointe, Chesapeake's rapidly expanding Central Business District.

PROPERTY HIGHLIGHTS

- 2,308 SF flex space with one (1) 10' x 12' grade level roll-up door
- Renovated in 2020
- Convenient location between Battlefield Boulevard and Greenbrier Parkway
- Multiple uses possible

ADDITIONAL PHOTOS

809 PROFESSIONAL PLACE WEST, UNIT 104
Chesapeake, VA 23320



S.L. NUSBAUM
REALTY CO.

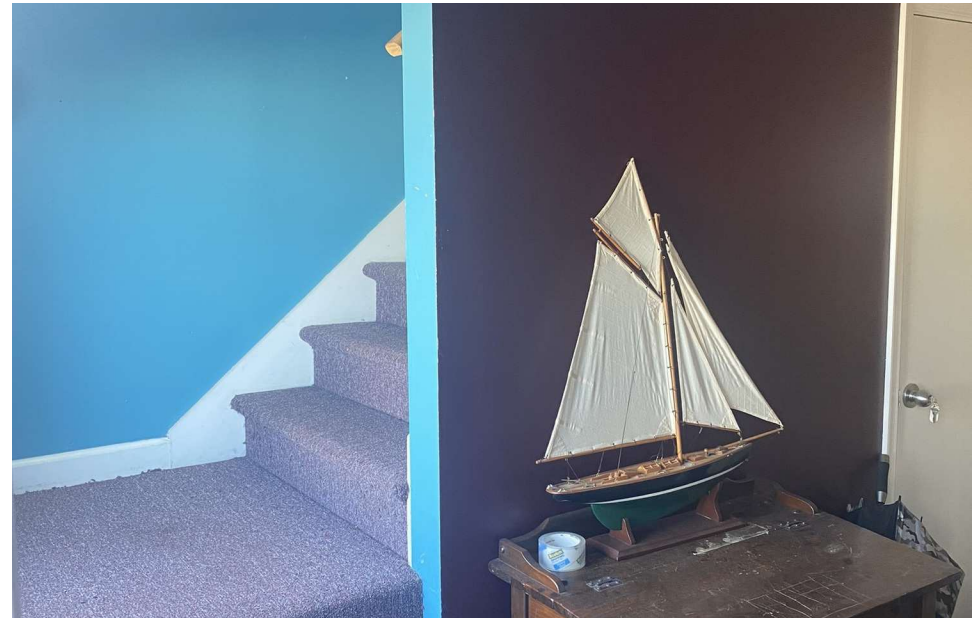


ADDITIONAL PHOTOS

809 PROFESSIONAL PLACE WEST, UNIT 104
Chesapeake, VA 23320



S.L. NUSBAUM
REALTY CO.



LOCATION MAP

809 PROFESSIONAL PLACE WEST, UNIT 104
Chesapeake, VA 23320



S.L. NUSBAUM
REALTY CO.



DEMOGRAPHICS MAP & REPORT

809 PROFESSIONAL PLACE WEST, UNIT 104
Chesapeake, VA 23320

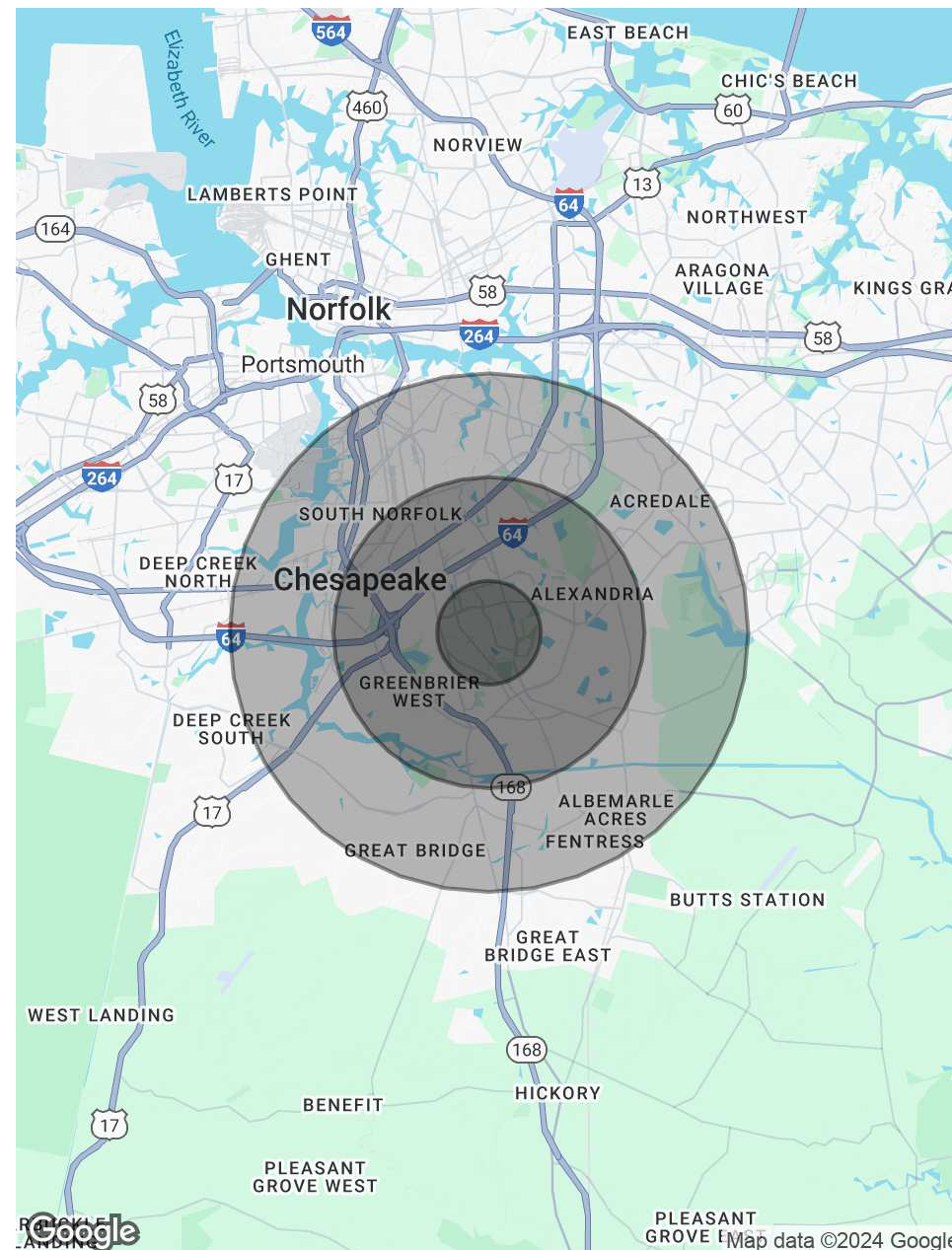


S.L. NUSBAUM
REALTY CO.

POPULATION	1 MILE	3 MILES	5 MILES
Total Population	8,704	77,329	200,788
Average Age	40	41	40
Average Age (Male)	38	39	38
Average Age (Female)	42	42	41

HOUSEHOLDS & INCOME	1 MILE	3 MILES	5 MILES
Total Households	3,730	31,734	77,069
# Of Persons Per HH	2.3	2.4	2.6
Average HH Income	\$100,796	\$102,756	\$112,973
Average House Value	\$322,440	\$334,671	\$358,211

Demographics data derived from AlphaMap



CONTACT INFORMATION

809 PROFESSIONAL PLACE WEST, UNIT 104
Chesapeake, VA 23320



S.L. NUSBAUM
REALTY CO.



AUSTIN GLASER

Associate

C. 757.675.0321

O. 757.271.3160

aglaser@slnusbaum.com

ANTHONY GRECCO

Associate

C. 757.235.1496

O. 757.452.6133

agrecco@slnusbaum.com

COMMITMENT. INTEGRITY. EXCELLENCE. SINCE 1906.

Serving the Southeast and Mid-Atlantic region for well over a century, S.L. Nusbaum Realty Co. continues to provide a comprehensive experience for our clients and customers in all aspects of the multifamily and commercial real estate industry.

[CLICK HERE TO LEARN MORE](#)

DISCLAIMER:

No warranty or representation, expressed or implied, is made to the accuracy or completeness of the information contained herein, and same is submitted subject to errors, omissions, change of price, rental or other conditions, withdrawal without notice, and to any special listing conditions imposed by the property owner(s). As applicable, we make no representation as to the condition of the property (or properties) in question.