



6001 MCCRIMMON PKWY.
MORRISVILLE, NC 27560

**FOR
LEASE**

**3,039 SF
OF MEDICAL
OFFICE SPACE**

LISTING BROKERS:

SHELLEY BHATIA, CCIM
910.273.8474 MOBILE
SBHATIA@TRADEMARKPROPERTIES.COM



TRADEMARK
PROPERTIES

1001 WADE AVENUE SUITE 300, RALEIGH, NC 27605
TRADEMARKPROPERTIES.COM | 919-782-5552

6001 MCCRIMMON PKWY
MORRISVILLE, NC 27560

PROPERTY HIGHLIGHTS

- » 22,000 SF, two-story Class A medical/professional office building
- » Suite 200A: 3,039 SF 2nd gen medical office space
- » Core Factor of 16.3%
- » Seeking 7 – 10 year lease term
- » Parking Ratio: 4.0:1,000 SF
- » Monument Signage Available
- » Convenient to RTP, Raleigh, Cary, and all points in the Triangle!



LEASE RATE:
\$35.00/SF, NNN
+\$6.00 TICAM

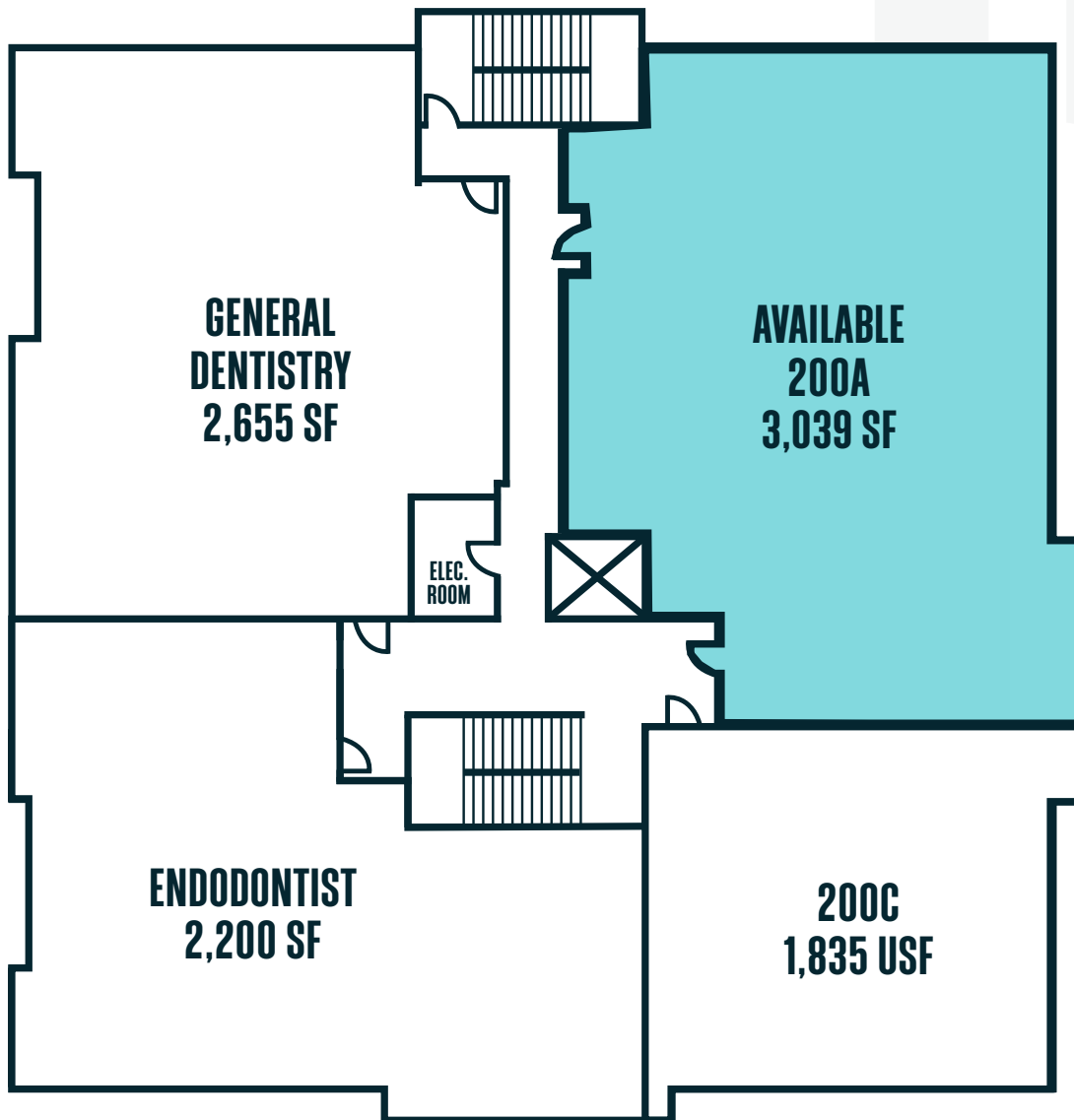
6001 MCCRIMMON PKWY
MORRISVILLE, NC 27560



SHELLEY BHATIA, CCIM
910.273.8474 (D)
SBHATIA@TRADEMARKPROPERTIES.COM

1001 WADE AVENUE SUITE 300
RALEIGH, NC 27605
TRADEMARKPROPERTIES.COM | 919-782-5552

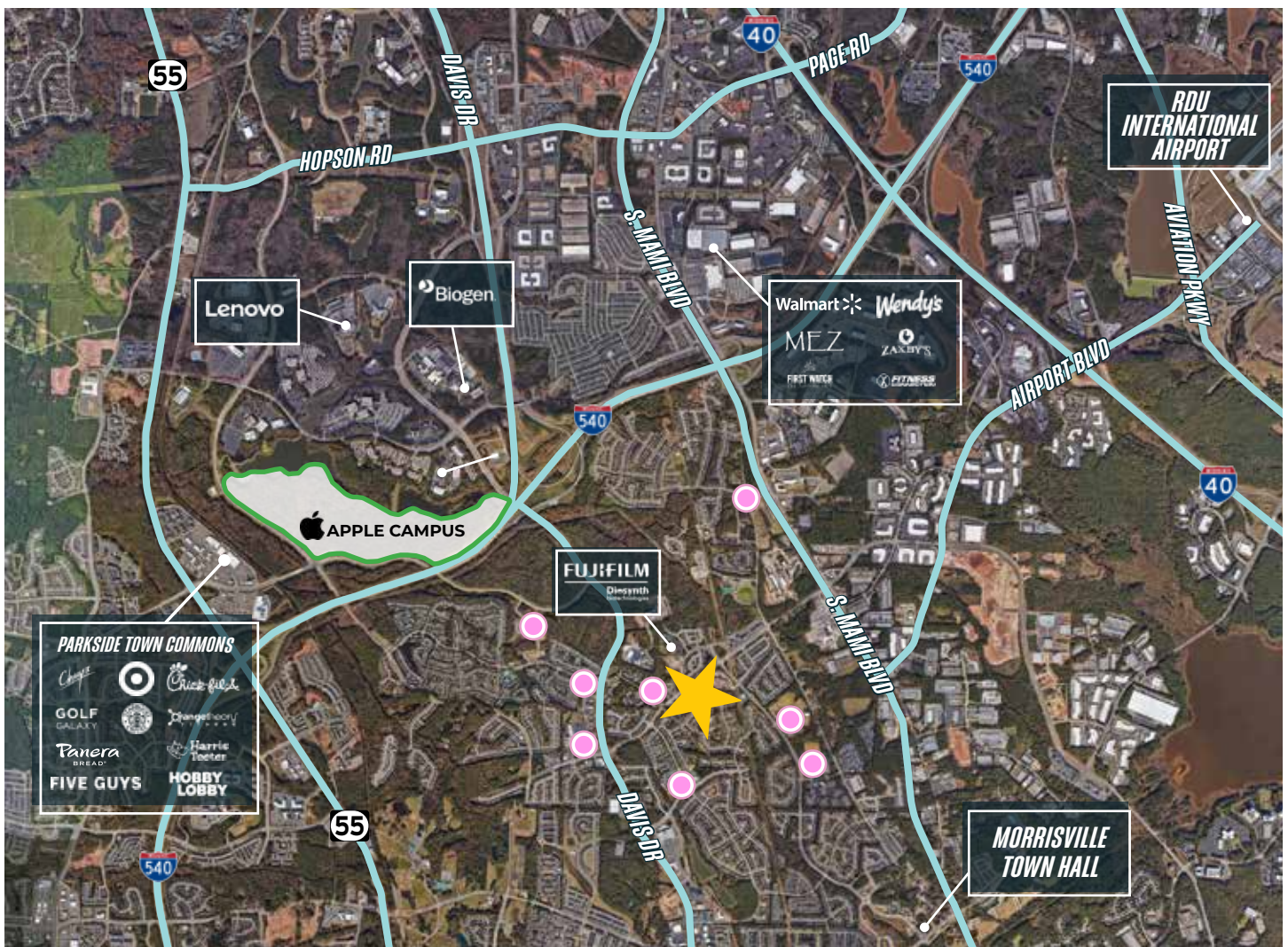
2ND FLOOR PLAN



6001 MCCRIMMON PKWY
MORRISVILLE, NC 27560

LOCATION

- » The property is centrally located within the Cary/Morrisville market, providing convenient access to growing, high-income West Cary.
- » The new Apple Campus, which will feature a \$1B investment and create over 3,000 jobs with an average salary of \$187,000, is located a short five minute drive from the property.
- » The area features convenient access to Interstate 440, Interstate 540, NC 54 Highway, the Research Triangle Park, and West Cary.

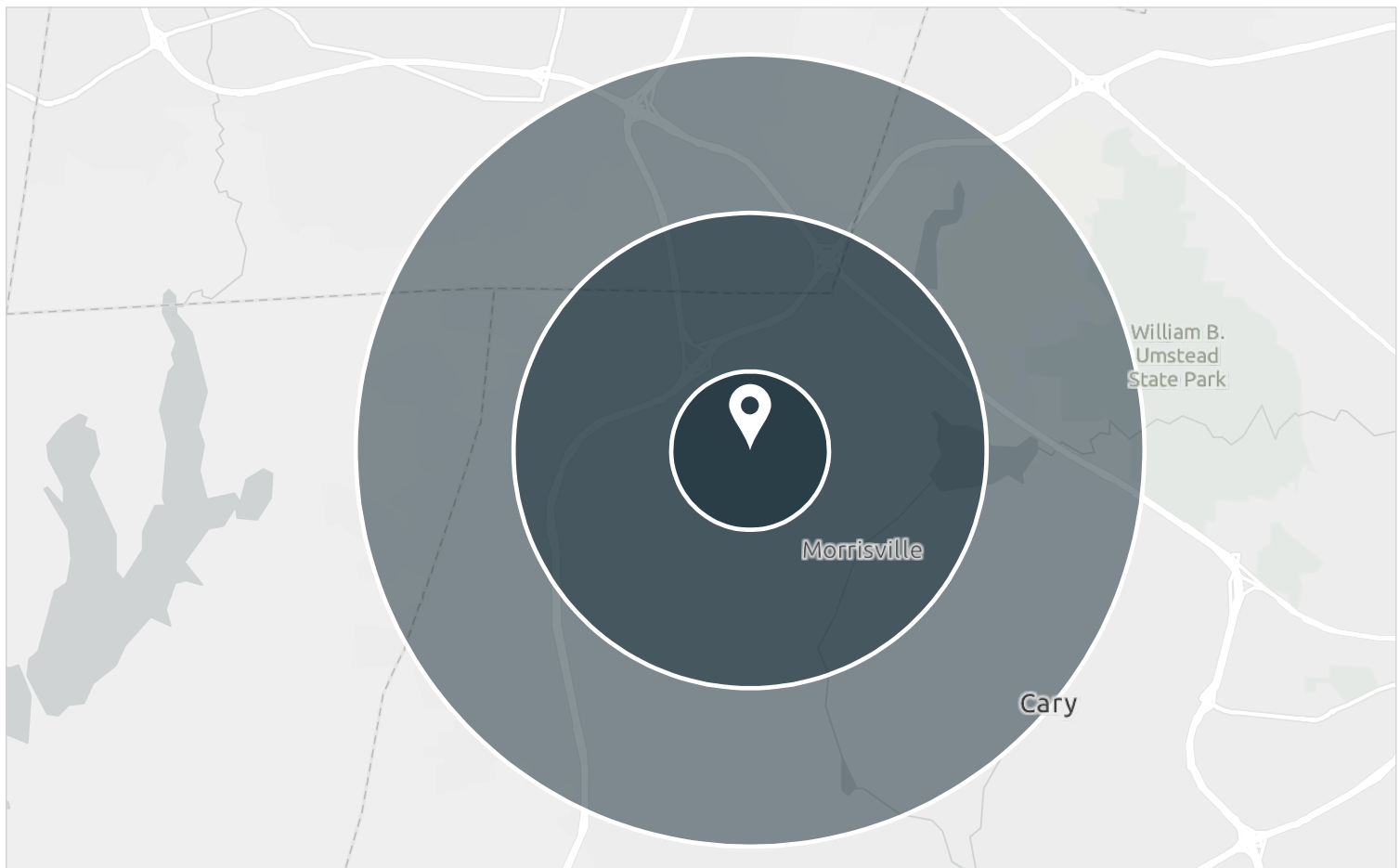


🟡 Seven daycares and schools within one mile

6001 MCCRIMMON PKWY
MORRISVILLE, NC 27560

DEMOGRAPHICS

	1 Mile	3 Miles	5 Miles
2025 POPULATION	10,466	85,993	158,455
2030 POPULATION (PROJECTED)	11,307	91,769	169,729
2025 HOUSEHOLDS	3,785	30,436	59,365
2030 HOUSEHOLDS (PROJECTED)	4,102	32,928	64,466
OWNER-OCCUPIED HOUSING UNITS	2,064	18,872	35,831
RENTER-OCCUPIED HOUSING UNITS	1,721	11,564	23,534
2025 AVERAGE HOUSEHOLD INCOME	\$202,383	\$193,351	\$186,104
2030 AVG HOUSEHOLD INCOME (PROJECTED)	\$223,116	\$211,107	\$202,544



EXCLUSIVE BROKER:

SHELLEY BHATIA, CCIM

910.273.8474 (M)

SBHATIA@TRADEMARKPROPERTIES.COM



TRADEMARK
P R O P E R T I E S

THIS IS OUR TRADEMARK

THE INFORMATION CONTAINED HEREIN WAS OBTAINED FROM SOURCES BELIEVED RELIABLE; HOWEVER, TRADEMARK PROPERTIES MAKES NO GUARANTEES, WARRANTIES, OR REPRESENTATIONS AS TO THE COMPLETENESS OR ACCURACY THEREOF. THE PRESENTATION OF THIS PROPERTY IS SUBMITTED SUBJECT TO ERRORS, OMISSIONS, CHANGES OF PRICE OR CONDITIONS PRIOR TO SALE OR LEASE, OR WITHDRAWAL WITHOUT NOTICE.