

Corporate
SQUARE

OFFICE PARK
CREVE COEUR, MO

Investment Opportunity



15,477 SF Single-Story Building

1181 Corporate Lake Dr | Creve Coeur, MO 63132

NAIDESCO

The information contained herein has been given to us by the owner of the property or other sources we deem reliable. We have no reason to doubt its accuracy, but we do not guarantee it. All information should be verified prior to lease or purchase.

8112 Maryland Ave, Suite 300 | St. Louis MO 63105
314 994 4800 | info@naidesco.com | naidesco.com

1181 Corporate Lake Dr Property Details



- 15,477 SF single-story building
- Fully leased
- Building & monument signage available
- Abundant free surface parking
- Convenient access to Olive & Lindbergh Blvd

- Part of the growing 39 North Innovation District
- Located in an [Opportunity Zone](#)
- Numerous amenities within a short distance
- Sale Price: Contact Broker

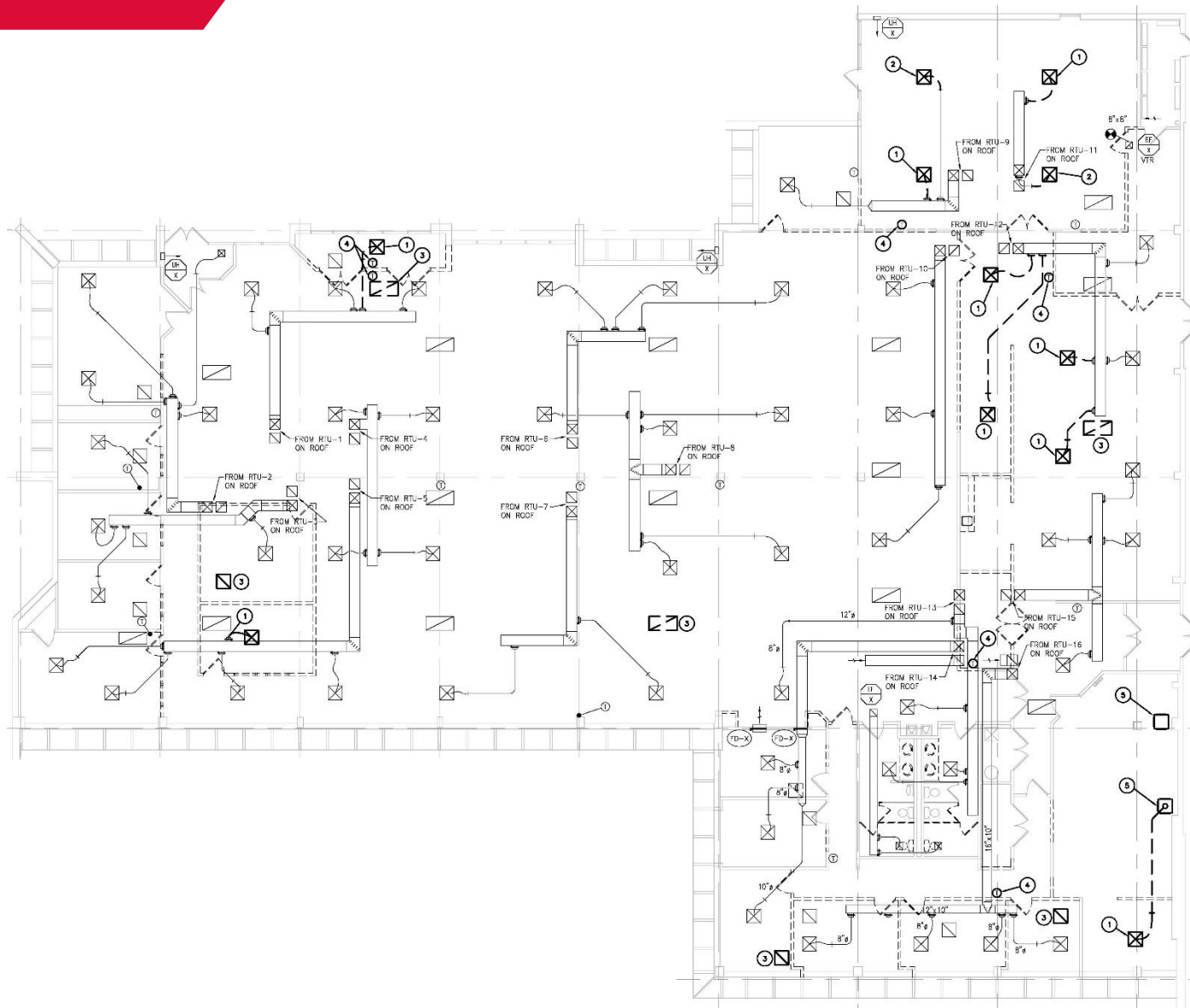
Matt Ruck, CCIM

314 994 4445 Direct • 314 409 8676 Mobile
mbruck@naidesco.com

Michelle Miller, CCIM

314 994 4944 Direct • 636 236 9802 Mobile
mmiller@naidesco.com

1181 Corporate Lake Dr Floor Plan



**Corporate
SQUARE**

OFFICE PARK
CREVE COEUR, MO

BENSON HILL™
NOURISHING INNOVATION™

**DONALD DANFORTH
PLANT SCIENCE CENTER**

**HELIX CENTER
BIOTECH INCUBATOR**

BIO RESEARCH &
DEVELOPMENT GROWTH
BRDG Park
AT THE DANFORTH PLANT SCIENCE CENTER



NAIDESCO

Matt Ruck, CCIM
314 994 4445 Direct
mruck@naidesco.com

Michelle Miller, CCIM
314 994 4944 Direct
mmiller@naidesco.com

8112 Maryland Ave, Suite 300
St. Louis, MO 63105
314 994 4800
naidesco.com

Corporate Square Office Park Area Synergy

