

33 E. ROBINSON STREET DOWNTOWN ORLANDO, FLORIDA

FOR LEASE | ± 3,000 SF OFFICE SPACE

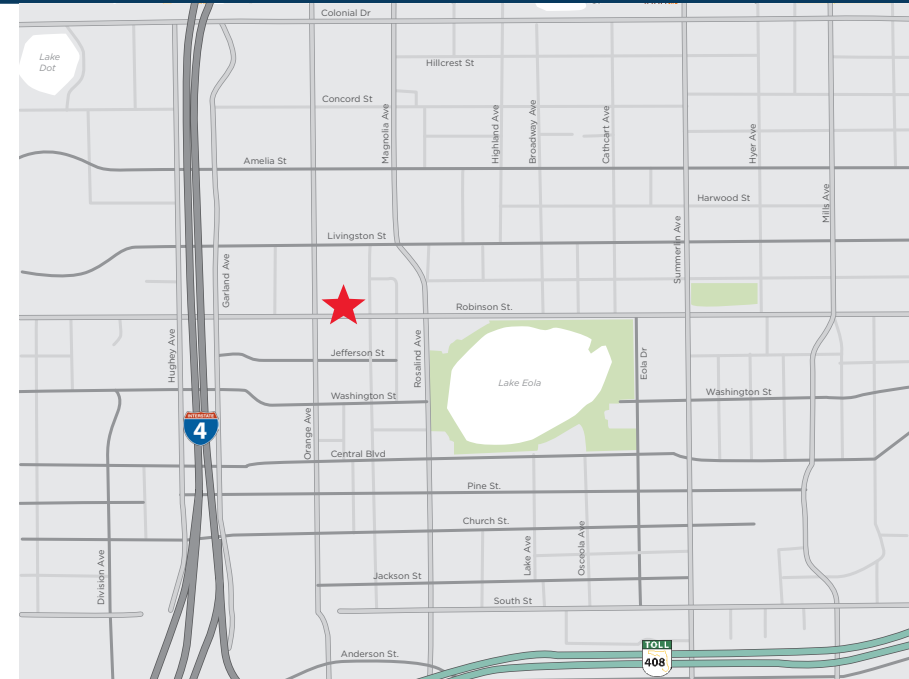


Kevin Hammond
Senior Director
(407) 241 3081
kevin.hammond@cushwake.com

John Skinner
Director
(407) 541 4436
john.skinner@cushwake.com

DOWNTOWN ORLANDO OFFICE

33 E. ROBINSON STREET



PROPERTY HIGHLIGHTS

- **BUILDING SIZE:** 10,770 SF | 2 stories
- **YEAR BUILT:** 1958/2024
- **AVAILABLE SPACE:** Suite 200: ± 3,000 SF
- **ASKING RENT:** \$26.00/SF Full Service
- Partial second floor office space located adjacent to Craft & Common Coffee
- Suite buildout includes 8 private offices and direct balcony access
- Located in the CBD of Downtown Orlando
- One block from the Orange County Courthouse
- Great access to LYNX Central Station, which houses a SunRail station and multiple LYNX buslines

AREA DEMOGRAPHICS

	1 MILE	3 MILES	5 MILES
<i>Population</i>	24,193	103,641	297,134
<i>Employees</i>	13,296	62,200	166,555
<i>Daytime Population</i>	83,487	258,256	464,460
<i>Avg. HH Income</i>	\$112,818	\$124,319	\$107,633

WITHIN WALKING DISTANCE

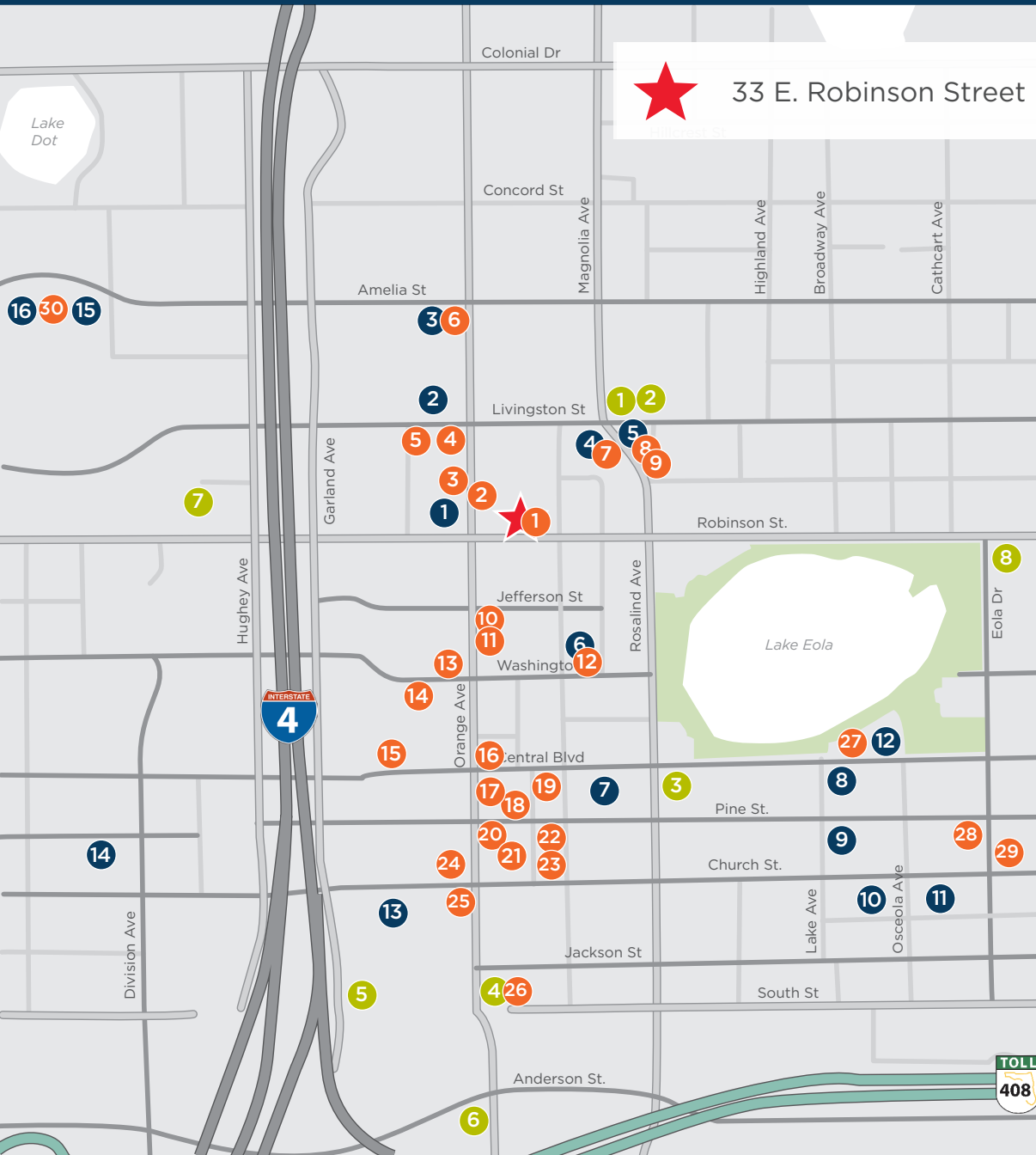
4,900 ±
MULTI-FAMILY
UNITS

2,200 ±
HOTEL
ROOMS

50 +
RESTAURANTS

DOWNTOWN ORLANDO OFFICE

33 E. ROBINSON STREET



33 E. Robinson Street

RESTAURANTS/CAFES

- | | |
|--------------------------|--------------------------------|
| 1. Craft & Common | 16. Fixtion Restaurant |
| 2. Tacos El Rancho | 17. Thrive Lounge & Eatery |
| 3. Stemma Craft Coffee | 18. Shakai Sushi Lounge |
| 4. Acropolis Greek | 19. Taco Kat |
| 5. Latin Square | 20. Mai Thai |
| 6. Greenbeat | 21. BENTO |
| 7. The Great Greek | 22. Papi Smash'd Burger |
| 8. The Drake | 23. The Corner Pizza Bar |
| 9. Mango Fresh | 24. Kres Chophouse |
| 10. Schmankerl Stub'n | 25. Solita Tacos |
| 11. Tacos My Guey | 26. The Boheme |
| 12. Deeply Cafe | 27. Osphere Neighborhood Grill |
| 13. Elixir Kitchen | 28. Stubborn Mule |
| 14. Tin & Taco | 29. RusTeak |
| 15. Super Rico Colombian | 30. The Monroe |

MULTI-FAMILY

- | | |
|-----------------------|--------------------------|
| 1. MAA Robinson | 9. CitiTower |
| 2. Society Orlando | 10. Camden Thornton Park |
| 3. Central Station | 11. Camden Lake Eola |
| 4. SkyHouse | 12. MAA Parkside |
| 5. Radius | 13. 55 West |
| 6. Aspire | 14. City View |
| 7. Mondrian Lake Eola | 15. Modera |
| 8. Paramount | 16. The Julian |

HOTELS

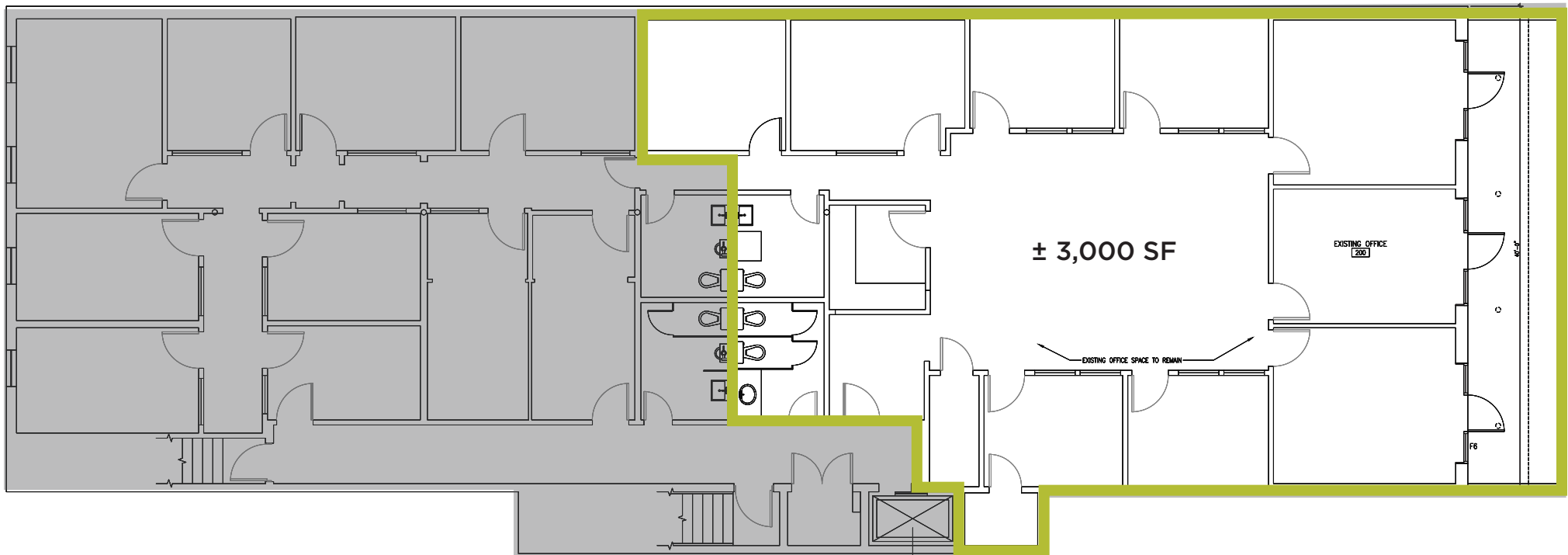
- | | |
|----------------------|-------------------|
| 1. Hilton Garden Inn | 5. AC Hotel |
| 2. Home2Suites | 6. Aloft Hotel |
| 3. Embassy Suites | 7. Marriott Hotel |
| 4. Grand Bohemian | 8. EO Inn |

DOWNTOWN ORLANDO OFFICE

33 E. ROBINSON STREET



SUITE 200: ± 3,000 SF



DOWNTOWN ORLANDO OFFICE

33 E. ROBINSON STREET



SUITE 200: ± 3,000 SF



CONTACTS

KEVIN HAMMOND

Senior Director

(407) 241 3081

kevin.hammond@cushwake.com

JOHN SKINNER

Director

(407) 541 4436

john.skinner@cushwake.com

©2024 Cushman & Wakefield. All rights reserved. The information contained in this communication is strictly confidential. This information has been obtained from sources believed to be reliable but has not been verified. NO WARRANTY OR REPRESENTATION, EXPRESS OR IMPLIED, IS MADE AS TO THE CONDITION OF THE PROPERTY (OR PROPERTIES) REFERENCED HEREIN OR AS TO THE ACCURACY OR COMPLETENESS OF THE INFORMATION CONTAINED HEREIN, AND SAME IS SUBMITTED SUBJECT TO ERRORS, OMISSIONS, CHANGE OF PRICE, RENTAL OR OTHER CONDITIONS, WITHDRAWAL WITHOUT NOTICE, AND TO ANY SPECIAL LISTING CONDITIONS IMPOSED BY THE PROPERTY OWNER(S). ANY PROJECTIONS, OPINIONS OR ESTIMATES ARE SUBJECT TO UNCERTAINTY AND DO NOT SIGNIFY CURRENT OR FUTURE PROPERTY PERFORMANCE.

