



1242 E WILMINGTON AVE, SALT LAKE CITY, UT 84106

FOR SUBLEASE

SPACE AVAILABLE: **1ST AND 2ND FLOOR — 13,420 RSF**

SUBLEASE TERM: **THROUGH 12/31/2030**

ASKING RATE: **\$31.50 FULL SERVICE**



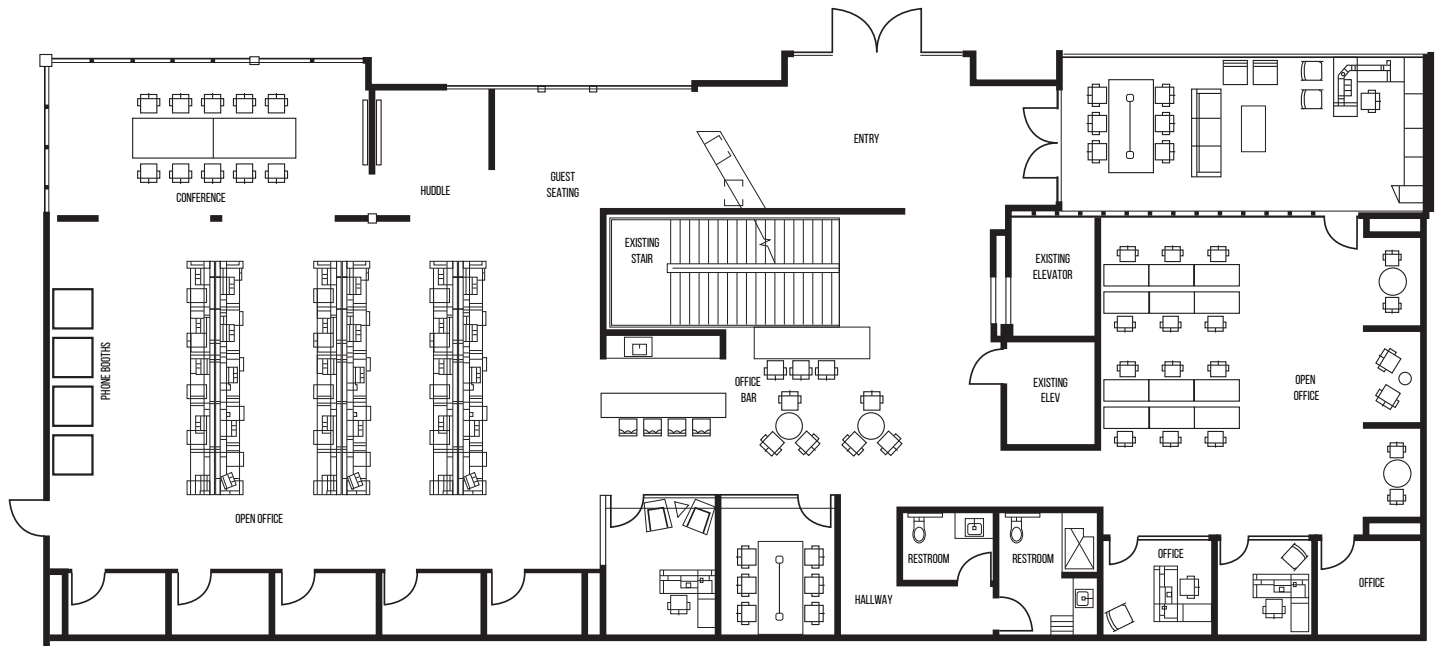
PROPERTY HIGHLIGHTS

- PLUG AND PLAY – FURNITURE NEGOTIABLE
- BEAUTIFULLY BUILT-OUT, HIGH-END SPACE
- DEDICATED ELEVATOR/RESTROOMS
- PROMINENT BUILDING SIGNAGE
- COVERED/SECURED PARKING
- SURROUNDED BY RETAIL, RESTAURANT, AND HOSPITALITY AMENITIES
- IMMEDIATE ACCESS TO I-80

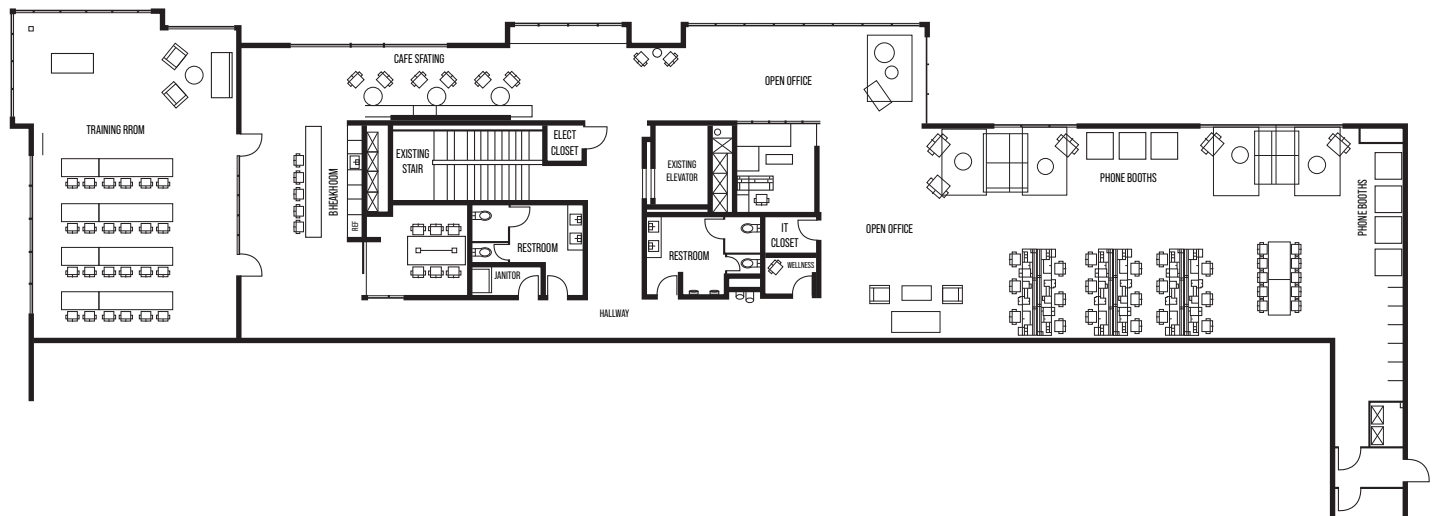


FLOOR PLANS

LEVEL 01



LEVEL 02



LOCATIONS

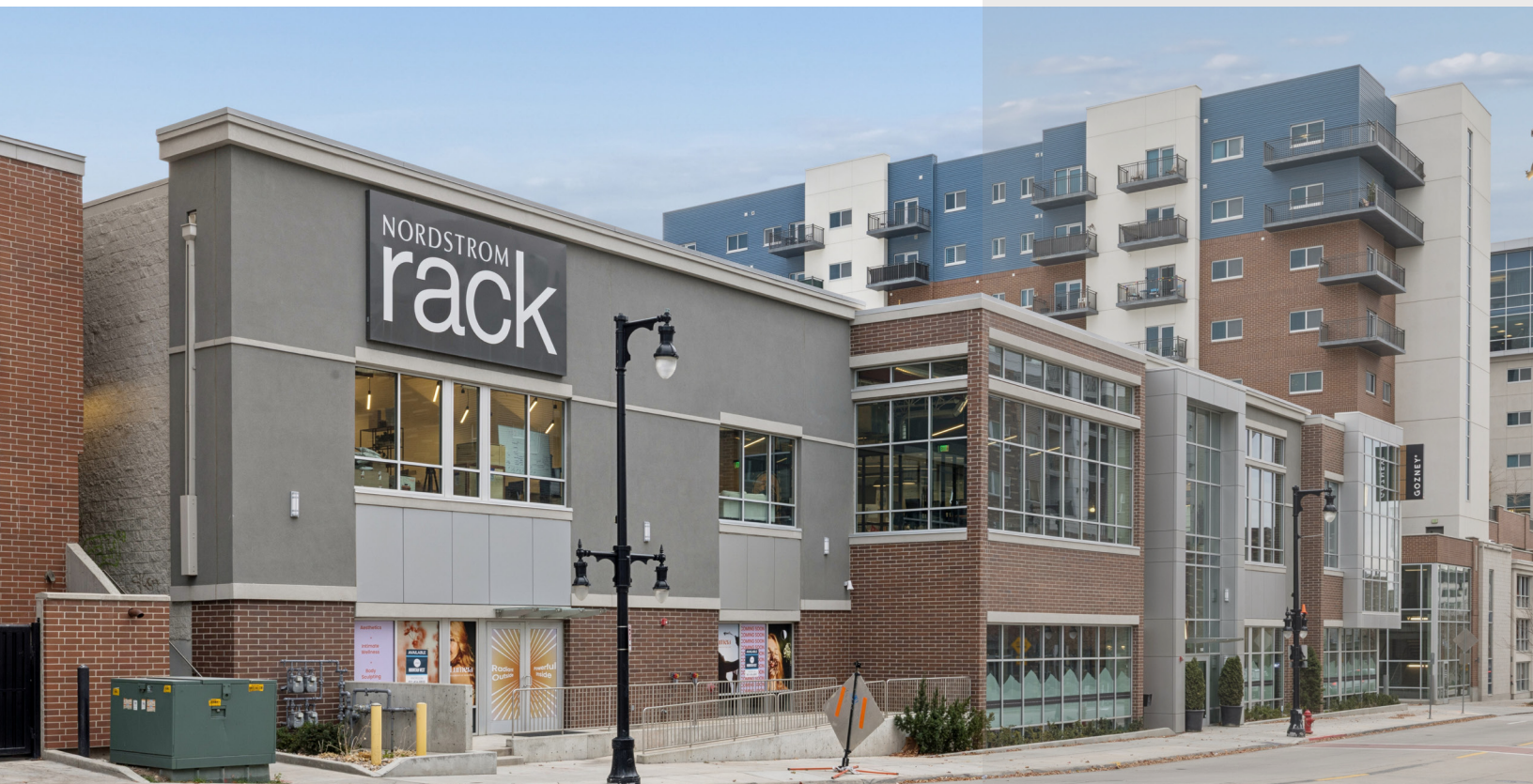


FOOD/DINING

1. SILVERSIDE DELI
2. SCOVILLES
3. BLIND RABBIT KITCHEN
4. HOPKINS BREWING COMPANY
5. HEARTH AND HILL - SUGAR HOUSE
6. CHICK-FIL-A
7. SPITZ - SUGARHOUSE
8. MUERTOS CANTINA
9. WENDY'S
10. STARBUCKS COFFEE COMPANY
11. OLIVE GARDEN ITALIAN RESTAURANT
12. CAFE RIO FRESH MODERN MEXICAN
13. RED LOBSTER
14. NOODLES AND COMPANY
15. PANDA EXPRESS
16. YELLOWFINN GRILL & SUSHI BAR
17. SOMI VIETNAMESE BISTRO
18. BGR BURGERS GRILLED RIGHT
19. TACO BELL
20. TSUNAMI RESTAURANT AND SUSHI BAR - SUGARHOUSE
21. THE DODO RESTAURANT
22. MCDONALD'S
23. BUFFALO WILD WINGS

-  FOOD/DINING
-  SHOPPING/RETAIL
-  HOTELS





ALTHOUGH INFORMATION HAS BEEN OBTAINED FROM SOURCES DEEMED RELIABLE, JLL DOES NOT MAKE ANY GUARANTEES, WARRANTIES OR REPRESENTATIONS, EXPRESS OR IMPLIED, AS TO THE COMPLETENESS OR ACCURACY AS TO THE INFORMATION CONTAINED HEREIN. ANY PROJECTIONS, OPINIONS, ASSUMPTIONS OR ESTIMATES USED ARE FOR EXAMPLE ONLY. THERE MAY BE DIFFERENCES BETWEEN PROJECTED AND ACTUAL RESULTS, AND THOSE DIFFERENCES MAY BE MATERIAL. JLL DOES NOT ACCEPT ANY LIABILITY FOR ANY LOSS OR DAMAGE SUFFERED BY ANY PARTY RESULTING FROM RELIANCE ON THIS INFORMATION. IF THE RECIPIENT OF THIS INFORMATION HAS SIGNED A CONFIDENTIALITY AGREEMENT WITH JLL REGARDING THIS MATTER, THIS INFORMATION IS SUBJECT TO THE TERMS OF THAT AGREEMENT. ©2026 JONES LANG LASALLE BROKERAGE, INC. ALL RIGHTS RESERVED.

FOR MORE INFORMATION, PLEASE CONTACT:

DAVID NIXON

+1 801 456 9518

DAVID.NIXON@JLL.COM

