



## PROPERTY HIGHLIGHTS

- For Sale
- 0.82 AC
- Zoning - Special Public Interest
- 5-Minute Drive to Downtown Atlanta
- Easy Access to I-20 & I-75/85

## PROPERTY LOCATION



## LOCAL MARKET CONTACTS

STUART BRACEY | 404.664.5321 | [sb@brighton-properties.com](mailto:sb@brighton-properties.com)  
JOSH GARRARD | 404.226.2920 | [jg@brighton-properties.com](mailto:jg@brighton-properties.com)





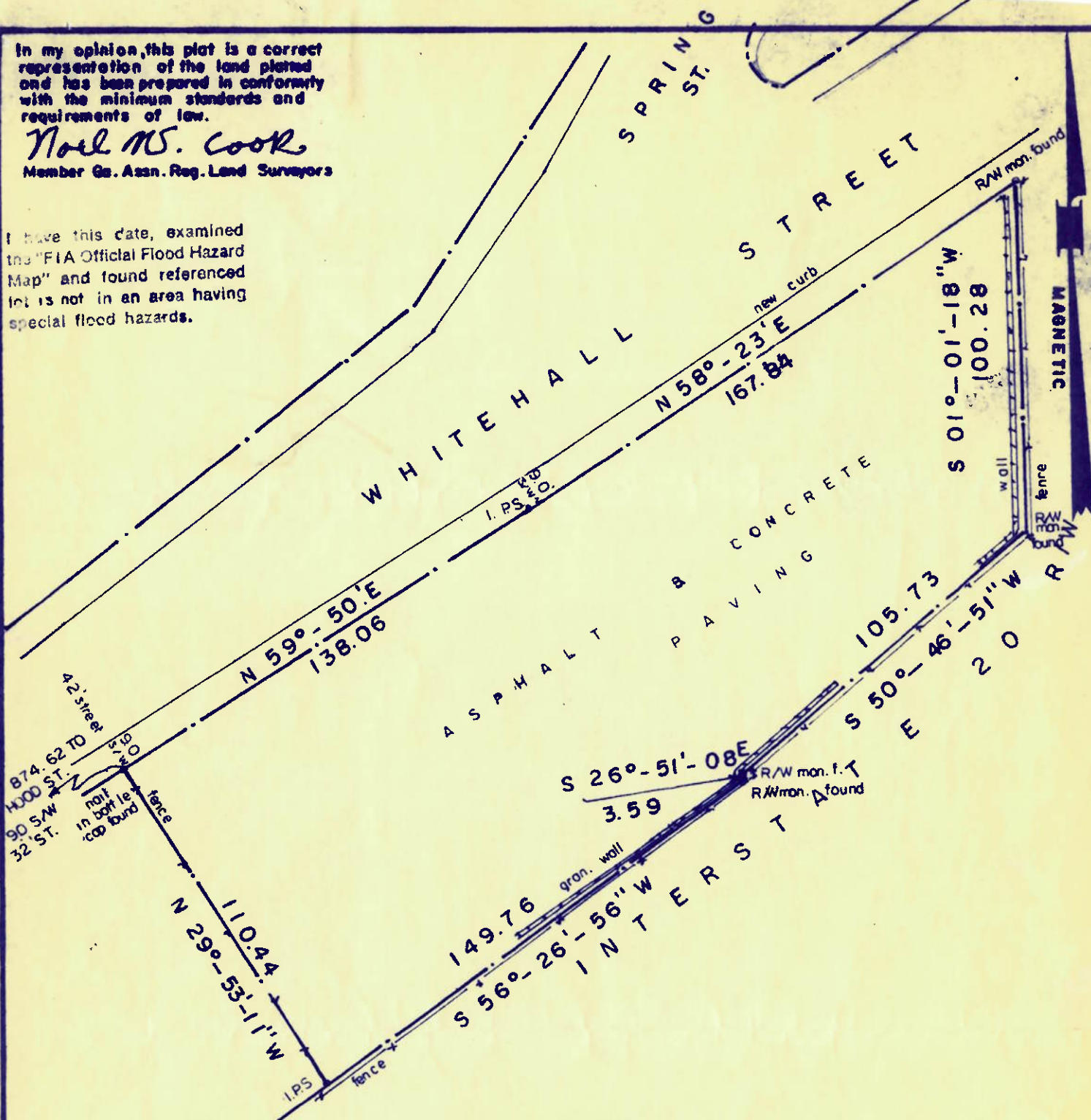


In my opinion, this plat is a correct representation of the land plotted and has been prepared in conformity with the minimum standards and requirements of law.

*Noel W. Cook*

Member Ga. Assn. Reg. Land Surveyors

I have this date, examined the "FIA Official Flood Hazard Map" and found referenced lot is not in an area having special flood hazards.



PLAT OF PROPERTY  
for

THE GAS KEY CORPORATION

LAND LOT 85

14<sup>th</sup> DISTRICT

FULTON COUNTY

GEORGIA

NOEL W. COOK

LAND SURVEYOR

OCTOBER 13, 1992

SCALE 1" = 40'

