

FOR SALE

PINPOINT

## COMMERCIAL ACREAGE - HIGHLAND COLONY PARKWAY

560 HIGHLAND COLONY PKWY, RIDGELAND, MS 39157

*For More Information*

**SAM COX**

601.586.3220

sam@pinpointcres.com

**BB MITCHELL**

601.586.3220

bb@pinpointcres.com

190 EAST CAPITOL STREET | JACKSON, MS 39201 | 601.586.3220 | PINPOINTCRES.COM

FOR SALE

PINPOINT

# COMMERCIAL ACREAGE - HIGHLAND COLONY PARKWAY

560 HIGHLAND COLONY PKWY, RIDGELAND, MS 39157



## OFFERING SUMMARY

Sale Price:	Subject To Offer
Lot Size:	0.74-21.00 Acres
County:	Madison
Zoning:	C-1 & C-2
Market:	Ridgeland

## PROPERTY OVERVIEW

Pinpoint Commercial Real Estate is proud to present various parcels that are available for sale on Highland Colony Pkwy. These tracts are prime candidates for commercial development in one of Mississippi's highest growing submarket, Ridgeland. For more information, please contact Sam Cox or BB Mitchell @ 601.586.3220.

## PROPERTY HIGHLIGHTS

- Commercial Land Ready for Development
- Frontage on Highland Colony Pkwy
- Various Parcel Sizes
- Easy Access to I-55
- High Growth Submarket
- Madison County

**SAM COX**

601.586.3220

sam@pinpointcres.com

**BB MITCHELL**

601.586.3220

bb@pinpointcres.com

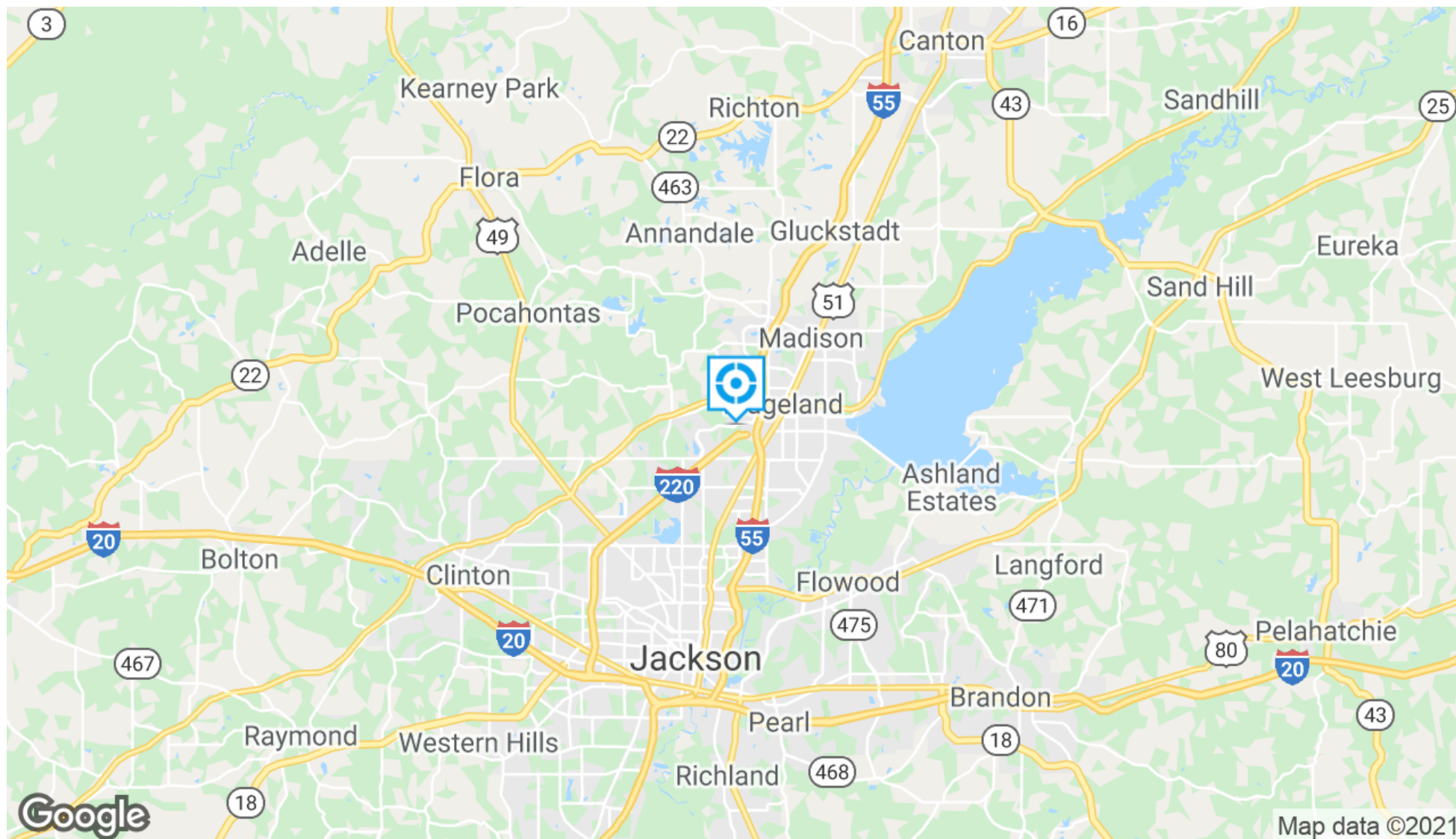


FOR SALE

PINPOINT

# COMMERCIAL ACREAGE - HIGHLAND COLONY PARKWAY

560 HIGHLAND COLONY PKWY, RIDGELAND, MS 39157



**SAM COX**

601.586.3220

sam@pinpointcres.com

**BB MITCHELL**

601.586.3220

bb@pinpointcres.com

190 EAST CAPITOL STREET | JACKSON, MS 39201 | 601.586.3220 | PINPOINTCRES.COM

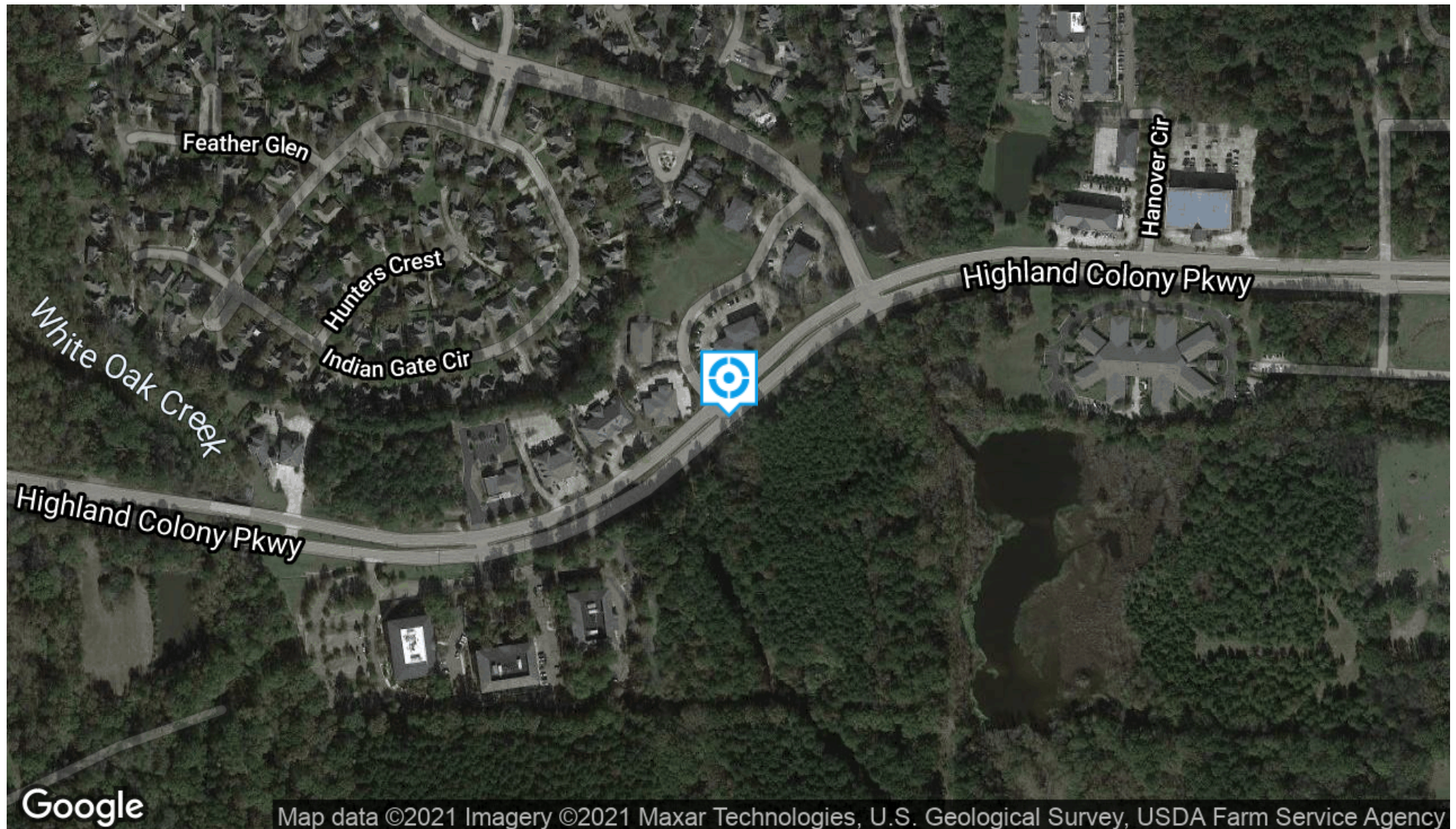


FOR SALE

PINPOINT

# COMMERCIAL ACREAGE - HIGHLAND COLONY PARKWAY

560 HIGHLAND COLONY PKWY, RIDGELAND, MS 39157



**SAM COX**

601.586.3220

sam@pinpointcres.com

**BB MITCHELL**

601.586.3220

bb@pinpointcres.com

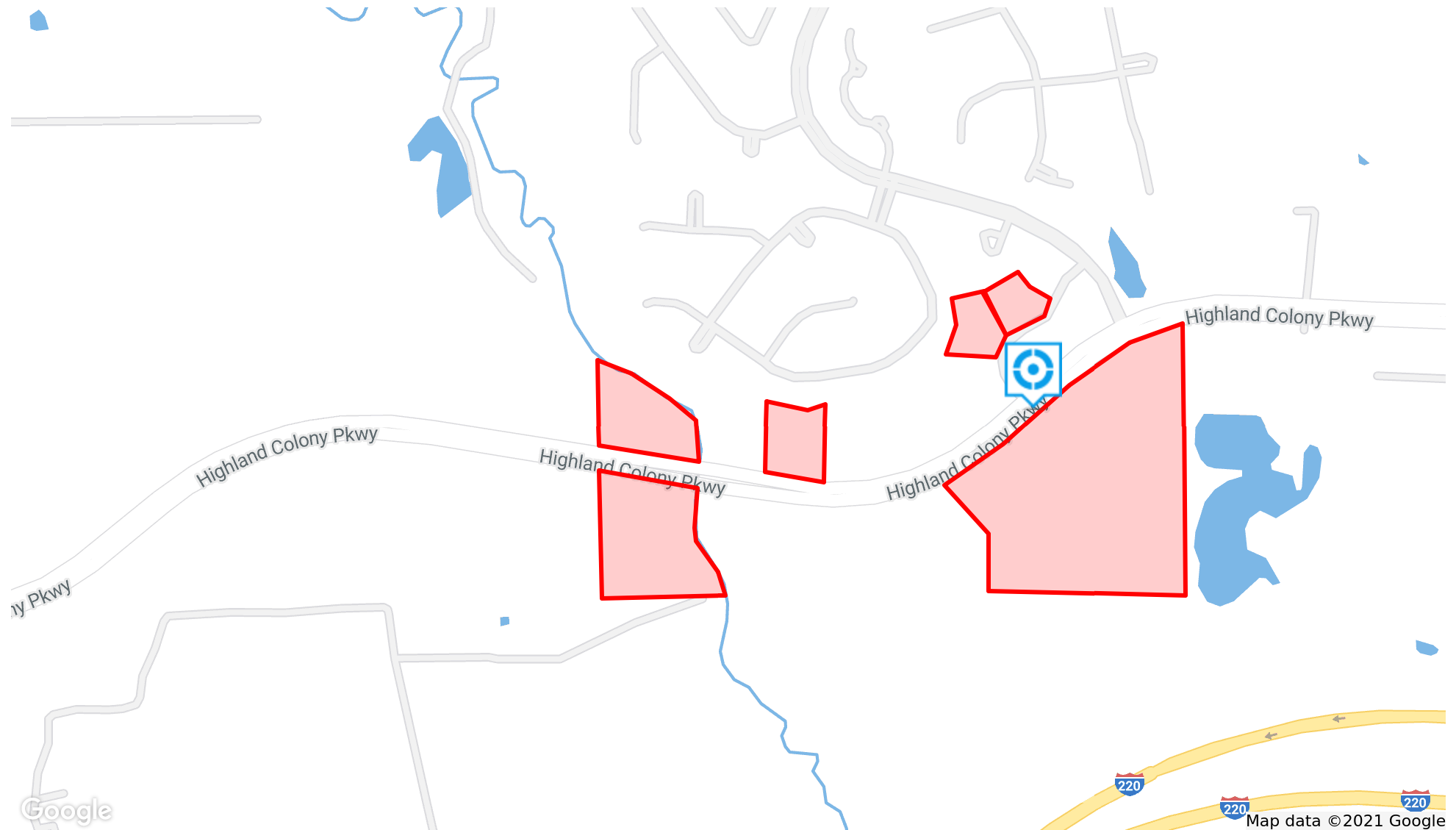
190 EAST CAPITOL STREET | JACKSON, MS 39201 | 601.586.3220 | PINPOINTCRES.COM

FOR SALE

PINPOINT

# COMMERCIAL ACREAGE - HIGHLAND COLONY PARKWAY

560 HIGHLAND COLONY PKWY, RIDGELAND, MS 39157



**SAM COX**

601.586.3220

sam@pinpointcres.com

**BB MITCHELL**

601.586.3220

bb@pinpointcres.com

190 EAST CAPITOL STREET | JACKSON, MS 39201 | 601.586.3220 | PINPOINTCRES.COM



FOR SALE

PINPOINT

# COMMERCIAL ACREAGE - HIGHLAND COLONY PARKWAY

560 HIGHLAND COLONY PKWY, RIDGELAND, MS 39157



**SAM COX**

601.586.3220

sam@pinpointcres.com

**BB MITCHELL**

601.586.3220

bb@pinpointcres.com

190 EAST CAPITOL STREET | JACKSON, MS 39201 | 601.586.3220 | PINPOINTCRES.COM



FOR SALE

PINPOINT

# COMMERCIAL ACREAGE - HIGHLAND COLONY PARKWAY

560 HIGHLAND COLONY PKWY, RIDGELAND, MS 39157



**SAM COX**

601.586.3220

sam@pinpointcres.com

**BB MITCHELL**

601.586.3220

bb@pinpointcres.com

190 EAST CAPITOL STREET | JACKSON, MS 39201 | 601.586.3220 | PINPOINTCRES.COM

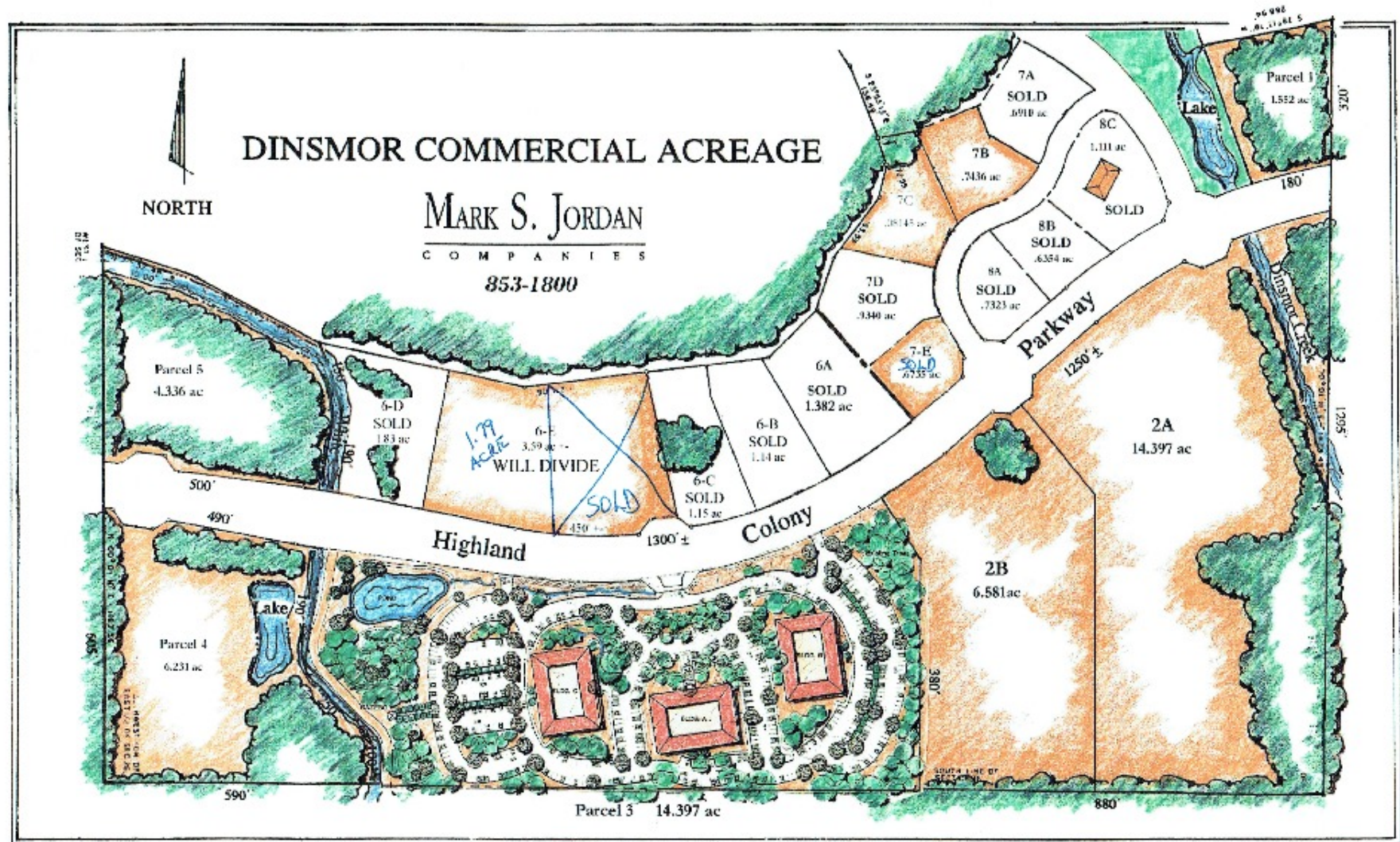


FOR SALE

PINPOINT

# COMMERCIAL ACREAGE - HIGHLAND COLONY PARKWAY

560 HIGHLAND COLONY PKWY, RIDGELAND, MS 39157



SAM COX

601.586.3220

sam@pinpointcres.com

BB MITCHELL

601.586.3220

bb@pinpointcres.com

190 EAST CAPITOL STREET | JACKSON, MS 39201 | 601.586.3220 | PINPOINTCRES.COM



# COMMERCIAL ACREAGE - HIGHLAND COLONY PARKWAY

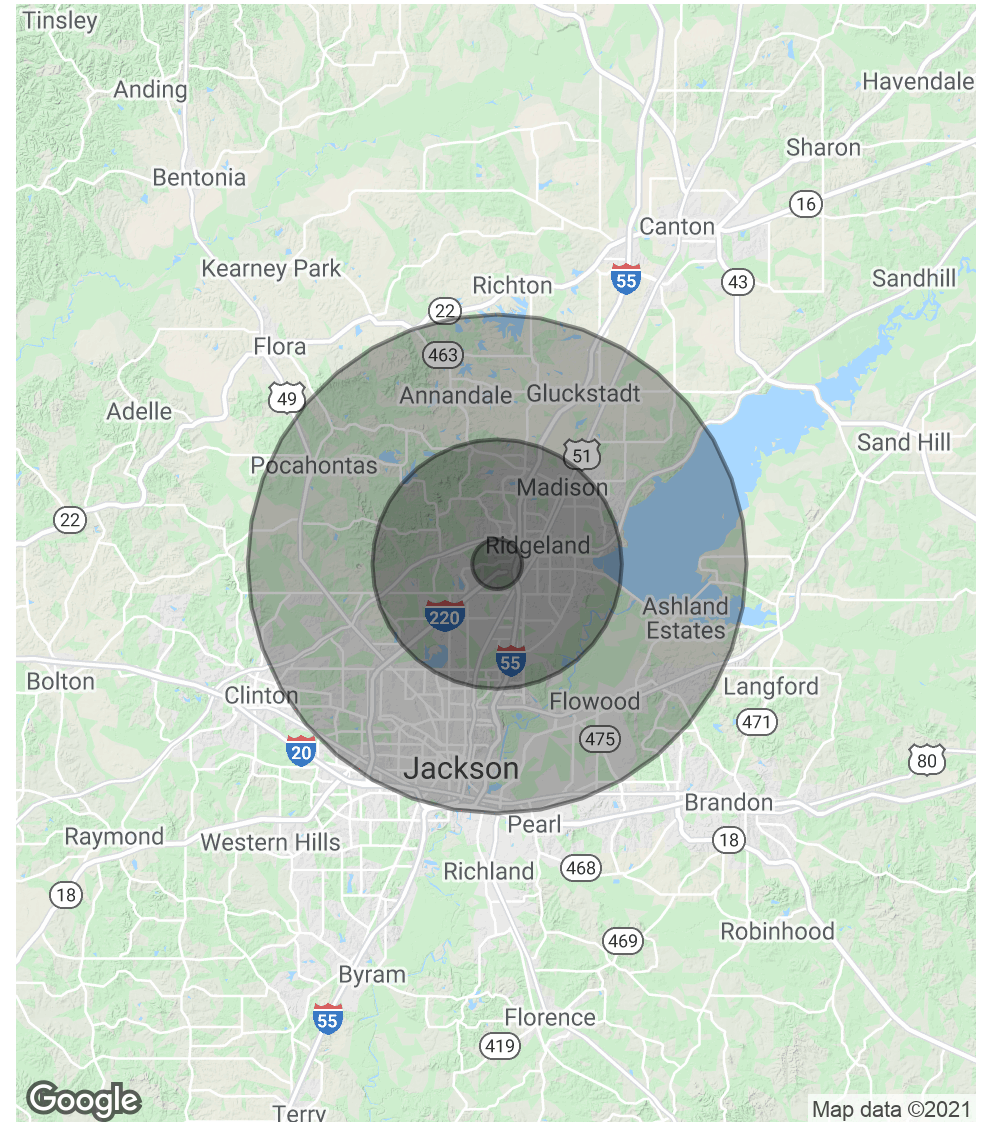
560 HIGHLAND COLONY PKWY, RIDGELAND, MS 39157

POPULATION	1 MILE	5 MILES	10 MILES
Total Population	1,367	90,576	234,317
Average age	38.3	35.3	34.6
Average age (Male)	37.0	34.6	33.7
Average age (Female)	39.5	36.1	35.3

HOUSEHOLDS & INCOME	1 MILE	5 MILES	10 MILES
Total households	516	35,975	89,759
# of persons per HH	2.6	2.5	2.6
Average HH income	\$106,169	\$74,572	\$67,827
Average house value		\$204,174	\$191,999

\* Demographic data derived from 2010 US Census



**SAM COX**

601.586.3220

sam@pinpointcres.com

**BB MITCHELL**

601.586.3220

bb@pinpointcres.com



# COMMERCIAL ACREAGE - HIGHLAND COLONY PARKWAY

560 HIGHLAND COLONY PKWY, RIDGELAND, MS 39157



**SAM COX**

President

sam@pinpointcres.com

Direct: 601.586.3220

## PROFESSIONAL BACKGROUND

Sam is the founder and president of Pinpoint Commercial Real Estate. Sam has built a large portfolio of clients with a primary goal to exceed their expectation in a reputable and professional manner. Sam is one of Mississippi's top producers, having completed over 100 million in real estate transactions.

His specialties include occupancy solutions for Landlords, representing Tenants in complex lease transactions, advising clients on site selection, acquisition/disposition of income producing property, assisting special servicers/lenders with non-performing assets, build-to-suit's, & third-party asset management.

Sam's attention to detail and ability to solve problems help clients make better decisions related to their real estate needs. Sam has been fortunate to have gain the trust of local, regional and national developers that see the value Sam brings to the process. Sam is a member of St. Joesph's Catholic Church in Gluckstadt, MS.

## EDUCATION

B.S. degree in Geological Engineering from the University of Mississippi

M.B.A. degree from Millsaps College

## MEMBERSHIPS

International Council of Shopping Centers (ICSC)

Urban Land Institute (ULI)

**SAM COX**

601.586.3220

sam@pinpointcres.com

**BB MITCHELL**

601.586.3220

bb@pinpointcres.com



FOR SALE

PINPOINT

# COMMERCIAL ACREAGE - HIGHLAND COLONY PARKWAY

560 HIGHLAND COLONY PKWY, RIDGELAND, MS 39157



**BB MITCHELL**

Vice President

bb@pinpointcres.com

Direct: 601.586.3220 | Cell: 601.934.5008

## PROFESSIONAL BACKGROUND

Ellis "BB" Mitchell is an Associate Broker at Pinpoint Commercial Real Estate, LLC. Since joining the real estate industry, BB has successfully completed over 100 transactions to date. BB advises and represents clients in asset classes that include industrial, office and retail. His core duties include landlord representation, site selection, lease analysis, lease and sublease negotiations, as well as acquisition and disposition of assets.

Prior to joining Pinpoint, BB worked as a leasing agent for Olymbec USA LLC in Memphis, TN. BB was in charge of the leasing for a portfolio that included over 8 million square feet of industrial, flex and retail space in the Memphis MSA.

Before Olymbec USA LLC, BB worked as an accountant for the Office of the State Treasurer in Jackson, MS. BB graduated from the University of Mississippi with a bachelor's degree of Accountancy and a minor in Real Estate. BB and his family attend Christ United Methodist Church in Jackson, MS.

**SAM COX**

601.586.3220

sam@pinpointcres.com

**BB MITCHELL**

601.586.3220

bb@pinpointcres.com