

FOR LEASE

WAREHOUSE/OFFICE SPACE

9616 & 9800 Hosier Street
Newport News, VA 23608



ABOUT PROPERTY

- 18,561 square feet of office/warehouse space
- #9616 - 13,136 SF total with 11,136 SF warehouse space and 2,000 SF office space
 - 3 back pedestrian doors (individual size); 2 front overhead doors, 1 front pedestrian door/office (individual size)
- #9800 - 5,425 SF total with 5,000 SF warehouse space and 425 SF office space
 - 2 back elevated loading docks (42"); 2 front elevated loading docks(42"), 1 front pedestrian door/office
- Conveniently located near Warwick Blvd with close access to the James River Bridge
- New roof
- **RENTAL RATE: \$6.50/SF NNN + \$0.77/SF CAM**

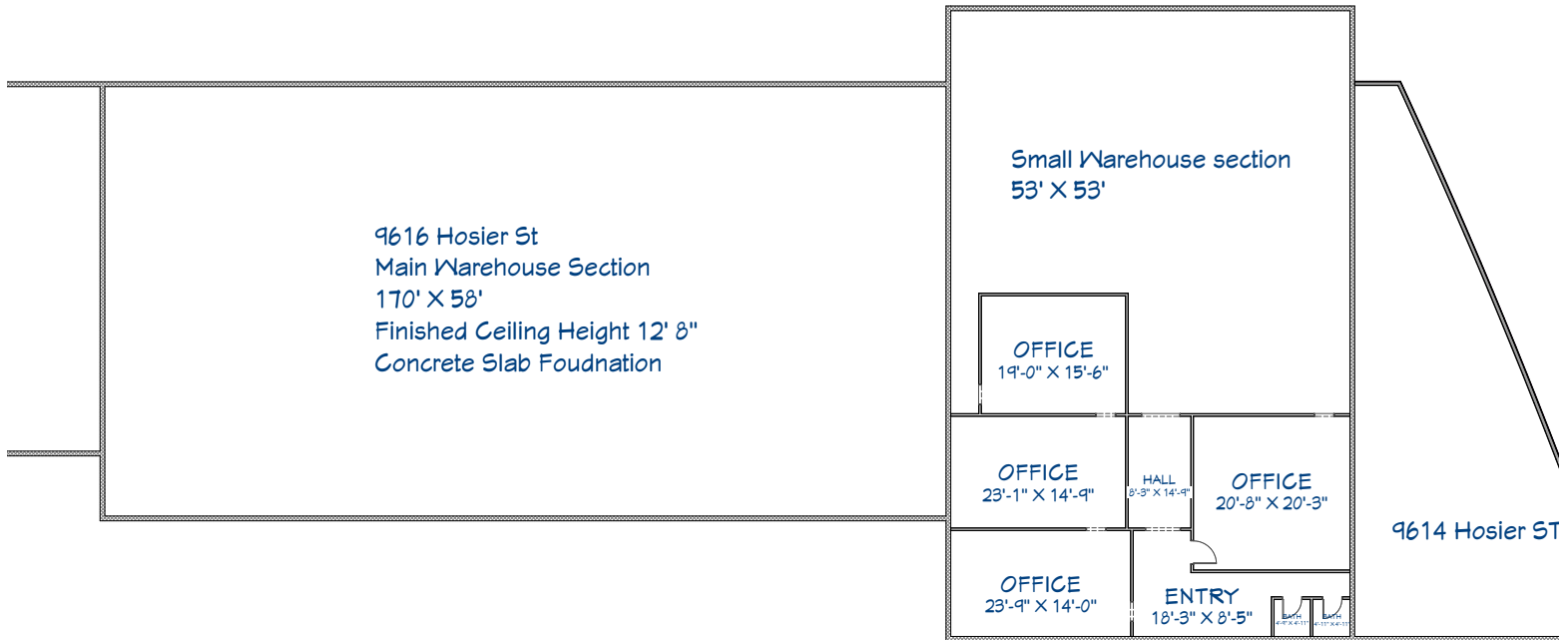


For more information:
BAYLEE WANG
757.782.5423
BayleeWang@HarveyLindsay.com

HARVEY LINDSAY
COMMERCIAL REAL ESTATE

www.harveylindsay.com

SITE PLAN | 9616 & 9800 Hosier St, Newport News, VA



9800 Hosier St
Warehouse
93' X 48'
Finishi Ceiling Height 14' 6"
Founation Wall Height 42"

PHOTOS | 9616 Hosier St, Newport News, VA



AERIAL OVERVIEW | 9616 & 9800 Hosier St, Newport News, VA



The information contained herein has been obtained from sources believed to be reliable but is not warranted. We cannot be responsible for errors, omissions, withdrawal, or prior lease or sale.

HARVEY LINDSAY
COMMERCIAL REAL ESTATE