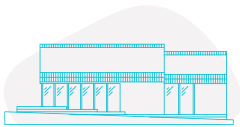


# FULCRUM

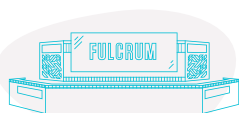


**FULCRUM IS A FOUR-BUILDING WORKPLACE DESTINATION CONVENIENTLY LOCATED AT 1645-1661 MURFREESBORO ROAD IN THE CENTER OF NASHVILLE'S AIRPORT DISTRICT.**

With available office/flex space ranging from 2,699 SF floor plates to a 12,000 SF half building opportunity, Fulcrum offers a variety of workspace for growing teams. A hub for connection, a center for collaboration, an accessible location — discover what makes Fulcrum the focal point of the airport office community.



**Completed Exterior Modernizations**



**Signage + Wayfinding Upgrades**



**Top of Building Signage Opportunities**



**Ample On-Site Parking at 4/1,000**

**1645 - 1661 MURFREESBORO PIKE | NASHVILLE, TN 37217**

**GRIFFIN FARRISS**

griffin.farriss@streamrealty.com  
561.676.2601

**BRADLEY WORTHINGTON**

bradley.worthington@streamrealty.com  
615.517.1386

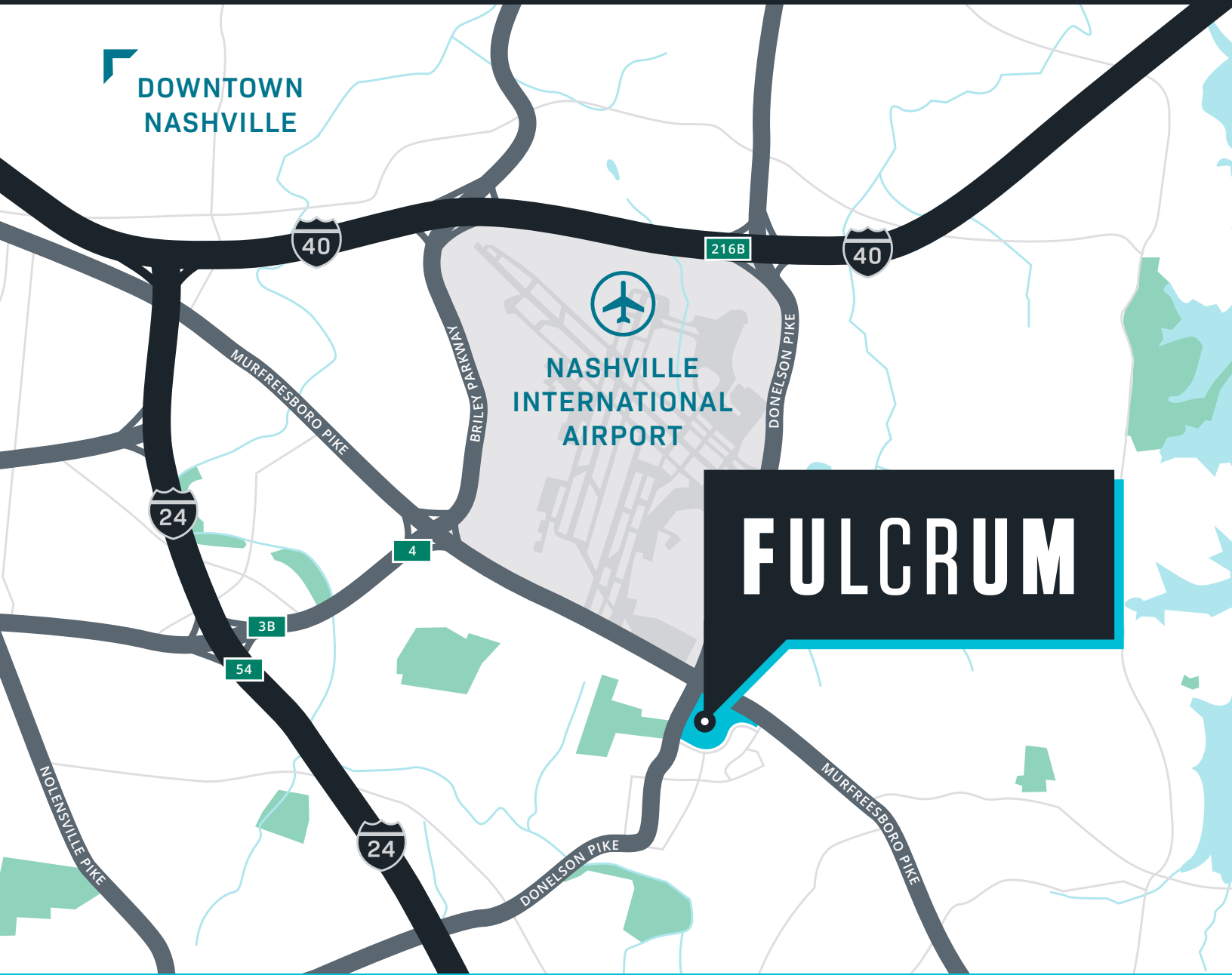
**MATT GARVEY**

matt.garvey@streamrealty.com  
615.840.2160



# LOCATION

Conveniently located just 10 minutes from I-24, I-40 and the Nashville International Airport — Fulcrum offers a connected experience that sets the tone for wherever the workday takes you.



1645 - 1661 MURFREESBORO PIKE | NASHVILLE, TN 37217

**GRIFFIN FARRISS**  
griffin.farriss@streamrealty.com  
561.676.2601

**BRADLEY WORTHINGTON**  
bradley.worthington@streamrealty.com  
615.517.1386

**MATT GARVEY**  
matt.garvey@streamrealty.com  
615.840.2160





# PHOTOS



1645 - 1661 MURFREESBORO PIKE | NASHVILLE, TN 37217

**GRIFFIN FARRISS**  
griffin.farriss@streamrealty.com  
561.676.2601

**BRADLEY WORTHINGTON**  
bradley.worthington@streamrealty.com  
615.517.1386

**MATT GARVEY**  
matt.garvey@streamrealty.com  
615.840.2160



# AVAILABILITIES

## 1645 MURFREESBORO PIKE

SUITE A: 2,699 SF

SUITE G: 3,063 SF



1645 - 1661 MURFREESBORO PIKE | NASHVILLE, TN 37217

**GRIFFIN FARRISS**

griffin.farriss@streamrealty.com  
561.676.2601

**BRADLEY WORTHINGTON**

bradley.worthington@streamrealty.com  
615.517.1386

**MATT GARVEY**

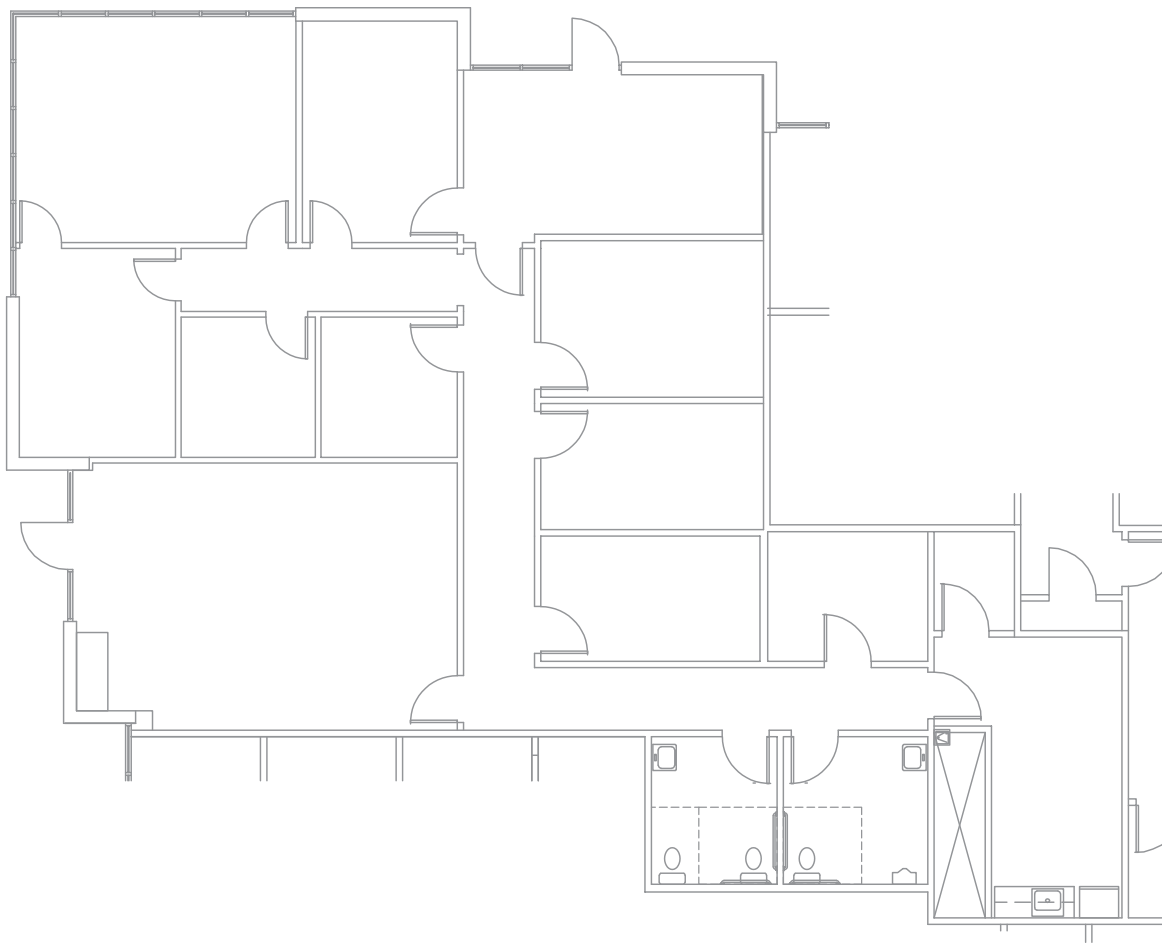
matt.garvey@streamrealty.com  
615.840.2160



# AVAILABILITIES

## SUITE A: 2,699 SF

PLUG & PLAY OFFICE SPACE



1645 - 1661 MURFREESBORO PIKE | NASHVILLE, TN 37217

### GRIFFIN FARRISS

griffin.farriss@streamrealty.com  
561.676.2601

### BRADLEY WORTHINGTON

bradley.worthington@streamrealty.com  
615.517.1386

### MATT GARVEY

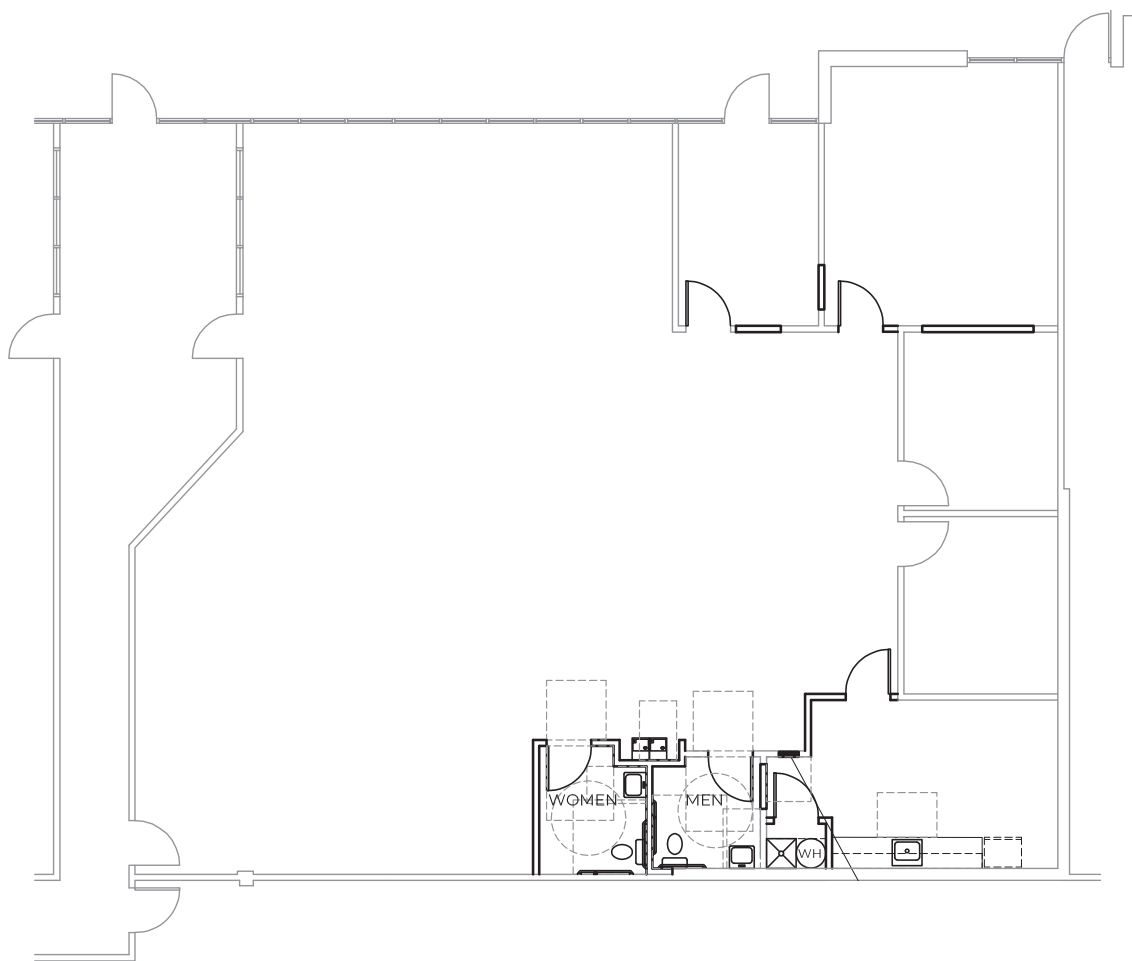
matt.garvey@streamrealty.com  
615.840.2160



# AVAILABILITIES

## SUITE G: 3,063 SF

WHITE BOX OFFICE SPACE



1645 - 1661 MURFREESBORO PIKE | NASHVILLE, TN 37217

### GRIFFIN FARRISS

griffin.farriss@streamrealty.com  
561.676.2601

### BRADLEY WORTHINGTON

bradley.worthington@streamrealty.com  
615.517.1386

### MATT GARVEY

matt.garvey@streamrealty.com  
615.840.2160

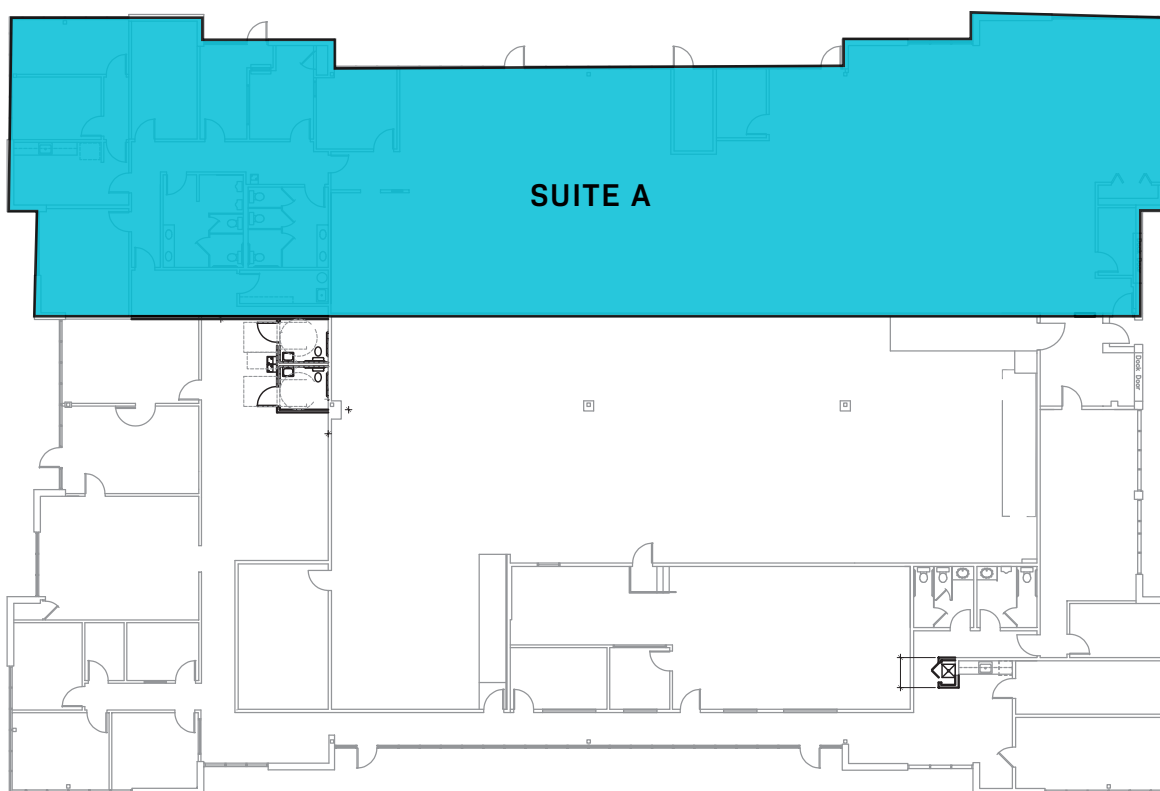


# AVAILABILITIES

1661 MURFREESBORO PIKE

SUITE A:

6,947 SF



1645 - 1661 MURFREESBORO PIKE | NASHVILLE, TN 37217

**GRIFFIN FARRISS**

griffin.farriss@streamrealty.com  
561.676.2601

**BRADLEY WORTHINGTON**

bradley.worthington@streamrealty.com  
615.517.1386

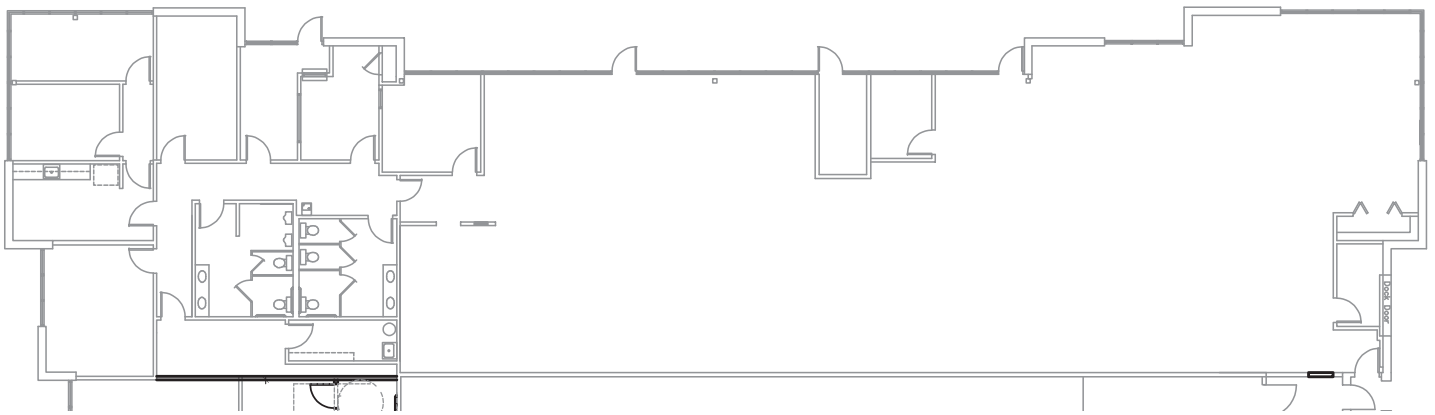
**MATT GARVEY**

matt.garvey@streamrealty.com  
615.840.2160



# AVAILABILITIES

**SUITE A: 6,947 SF**



**1645 - 1661 MURFREESBORO PIKE | NASHVILLE, TN 37217**

**GRIFFIN FARRISS**

griffin.farriss@streamrealty.com  
561.676.2601

**BRADLEY WORTHINGTON**

bradley.worthington@streamrealty.com  
615.517.1386

**MATT GARVEY**

matt.garvey@streamrealty.com  
615.840.2160



501 Commerce Street | Suite 1120  
Nashville, TN 37203  
615.795.0000

