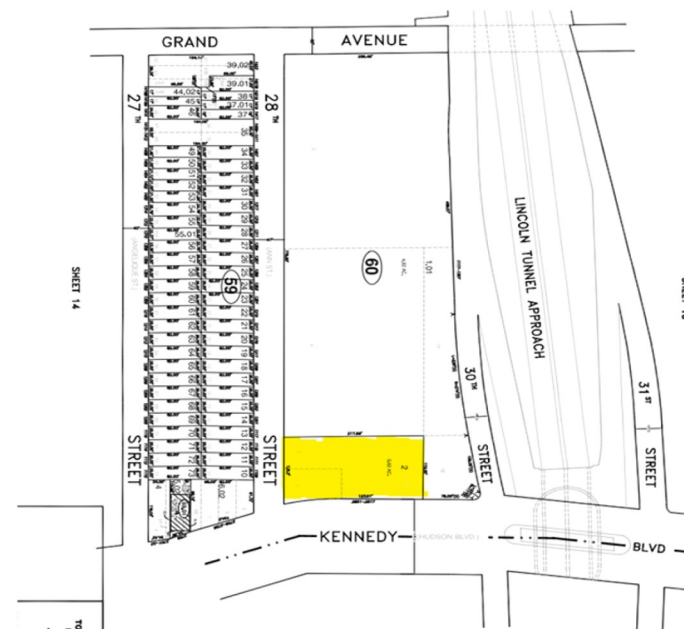


LOCATION ,LOCATION, LOCATION 2811 Kennedy blvd, North Bergen, NJ 07047



2811 Kennedy Blvd, North Bergen is a medical office building fully occupied.

Has 4 tenants MRI facility, Obstetrician, Orthodontist & a Holistic center.

Approximately 5,940 square feet Land, over 27,172.54 square feet (approximately half an acre), annual taxes amount to \$32,172.54.

Property enjoys great exposure on Kennedy Blvd between 28th St and 30th St. Convenient access to 495 highways and the Lincoln Tunnel.

Land Use: Classified as C2 commercial, has the potential for development into 80 to 150 residential units, Hotel, Assisted living Facility or adult daycare.



Wafa "GINA" JABADO
REALTOR®, Sales Associate
Lic#: 0674905
142 Newark Ave. | Jersey City, NJ 07302
C. 201.873.8154 | O. 201.963.1400
Wafa.Jabado@cbrealty.com
HomeByWafaJabado.cbintouch.com

Owned by a subsidiary of Anywhere Advisors LLC. ©

