



FOR LEASE

WEST LITTLE ROCK OFFICE SUITES

📍 2300 ANDOVER COURT | LITTLE ROCK, AR

Information is deemed reliable but is not guaranteed. Agency Disclosure: RPM Group is the agent for the owner of the property described herein.

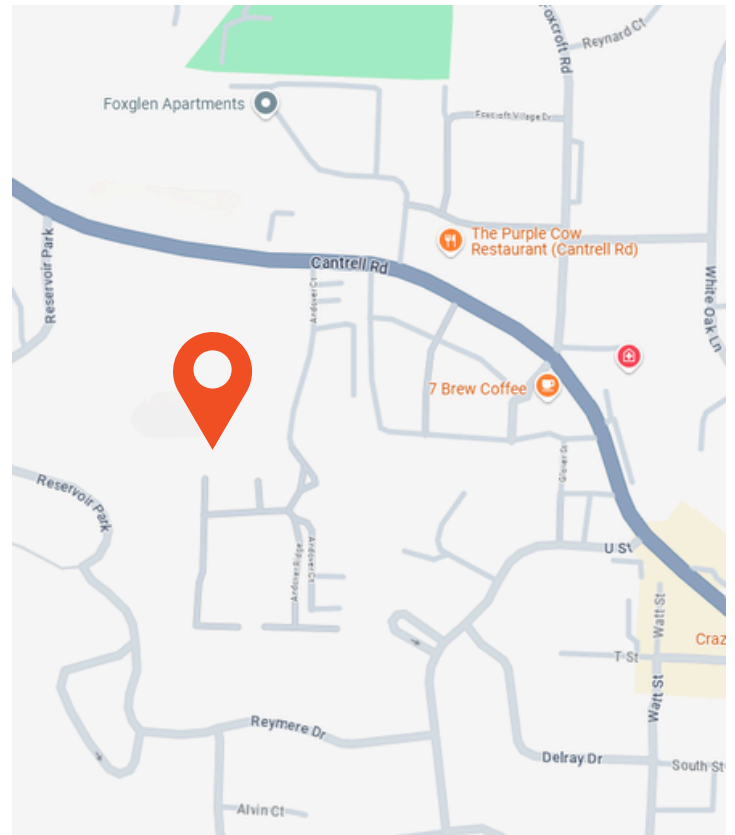
KYLE PATTON
501.831.4534 | WWW.RPMGROUP.COM
KPATTON@RPMGROUP.COM



PROPERTY INFORMATION

An excellent opportunity to lease one or both premium office suites in a prime West Little Rock/Midtown location. Suite 500 (± 965 SF) and Suite 560 ($\pm 1,407$ SF) can be leased separately or combined for a total of $\pm 2,372$ SF. This modern building offers a private office feel, ample parking, stylish common areas, and an inviting outdoor patio. Conveniently located just off Cantrell Road, it features a great tenant mix, including Joel's Salon and Arkansas Longevity Clinic. Ideal for businesses seeking a high-quality, professional space in a thriving area.

- > LEASE RATE \$25/SF
FULL-SERVICE
- > SUITE 500 965 SF \pm
- > SUITE 560 1407 SF \pm



Information is deemed reliable but is not guaranteed. Agency Disclosure: RPM Group is the agent for the owner of the property described herein.

KYLE PATTON
501.831.4534 | WWW.RPMGROUP.COM
KPATTON@RPMGROUP.COM



2300 ANDOVER COURT
LITTLE ROCK, AR

FOR LEASE



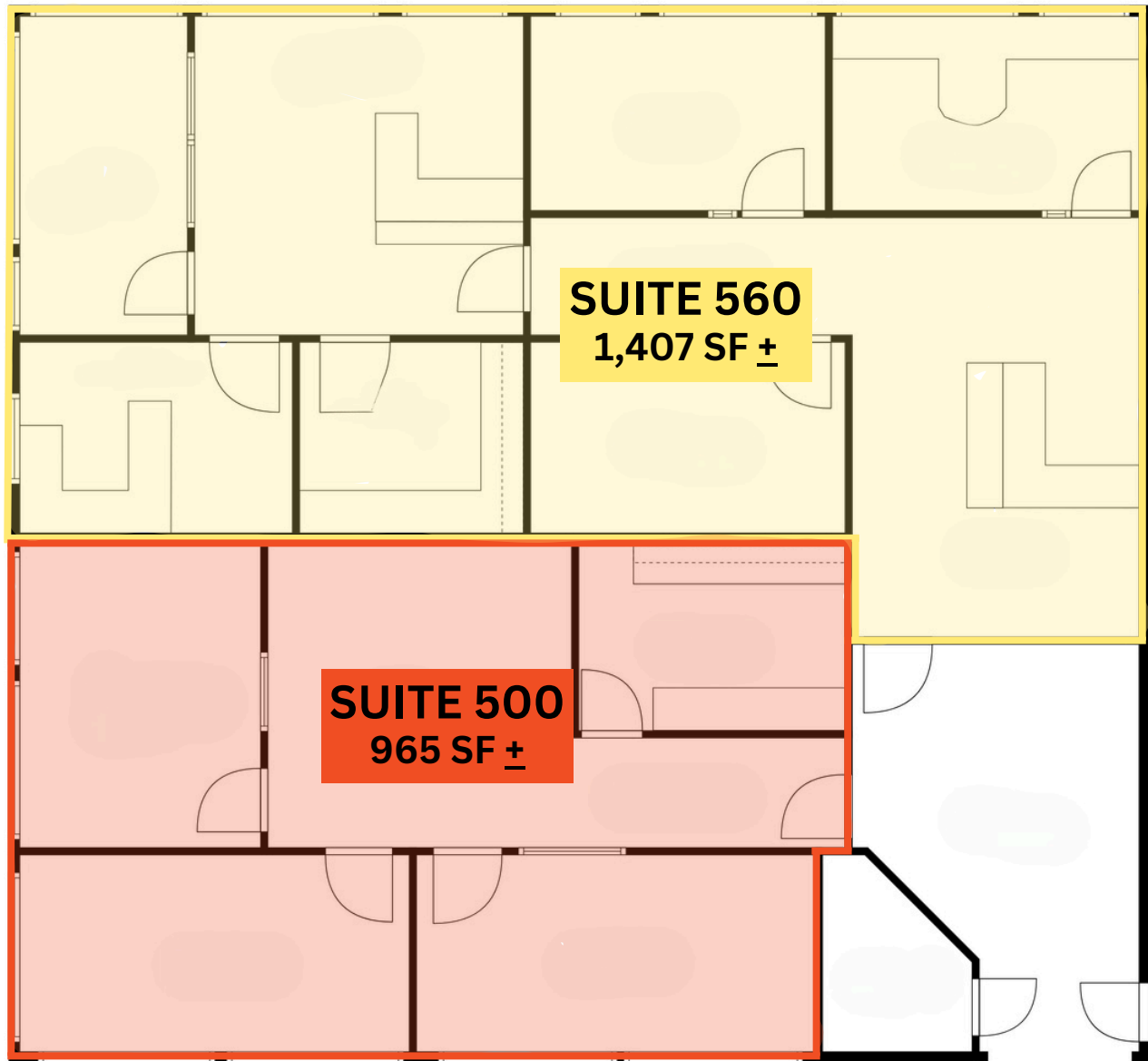
Information is deemed reliable but is not guaranteed. Agency Disclosure: RPM Group is the agent for the owner of the property described herein.

KYLE PATTON
501.831.4534 | WWW.RPMGROUP.COM
KPATTON@RPMGROUP.COM



2300 ANDOVER COURT
LITTLE ROCK, AR

FOR LEASE



TOTAL: 2486 sq. ft
FLOOR 1: 2486 sq. ft

Measurements Are Calculated By Avery & Bryant Technology. Deemed Highly Reliable But Not Guaranteed.

Information is deemed reliable but is not guaranteed. Agency Disclosure: RPM Group is the agent for the owner of the property described herein.

KYLE PATTON

501.831.4534 | WWW.RPMGROUP.COM

KPATTON@RPMGROUP.COM



2300 ANDOVER COURT
LITTLE ROCK, AR

FOR LEASE



Information is deemed reliable but is not guaranteed. Agency Disclosure: RPM Group is the agent for the owner of the property described herein.

KYLE PATTON
501.831.4534 | WWW.RPMGROUP.COM
KPATTON@RPMGROUP.COM

