

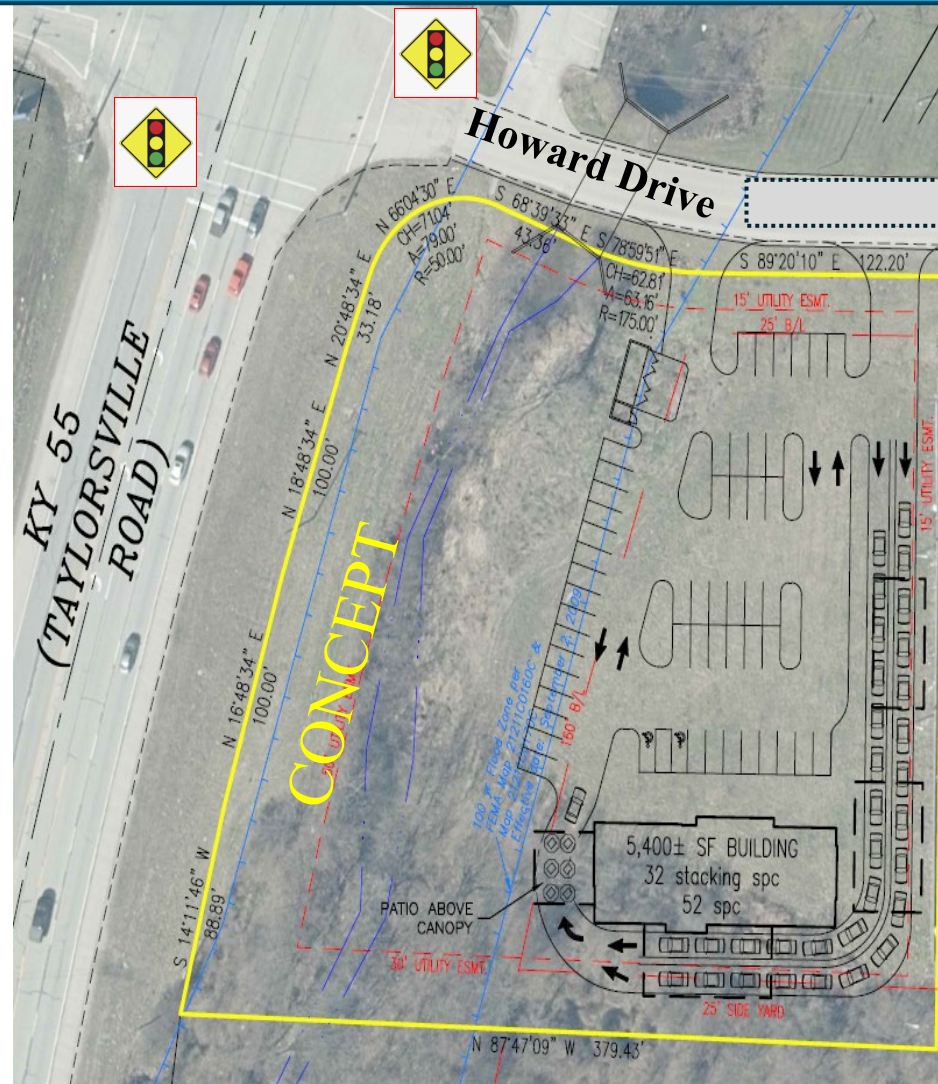
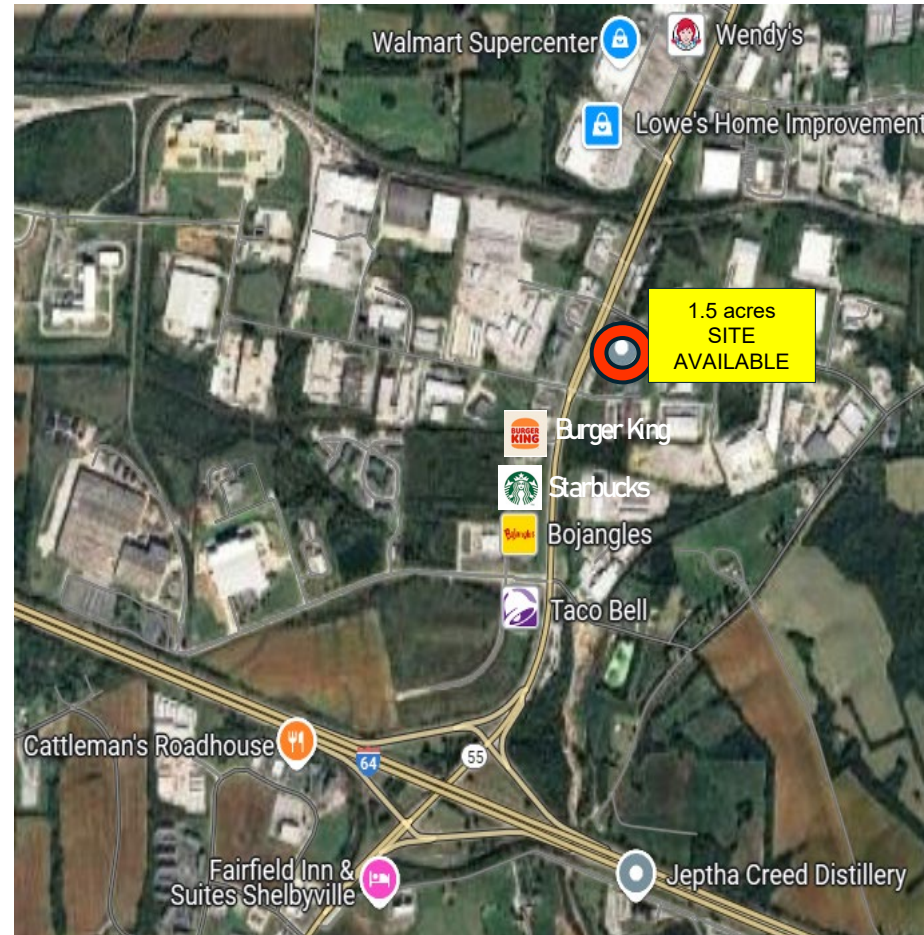
# PRIME CORNER LOCATION AVAILABLE

**901 Taylorsville Rd | Shelbyville | KY 40065**

**Exit 32 (I-64)**



**and KY Hwy 55 (Taylorsville Rd.)**



## Property Highlights

- High Visibility
- Hard Corner Location at signalized intersection
- Approx. 40,000 vpd – I64
- Utilities at the site
- Concept Site Plan Ready

## Nearby National Tenants

- Starbucks
- McDonald's
- Taco Bell
- Zaxby's
- Bojangles
- Arby's
- Waffle House

## Area Advantages

- Shelby County: Among the fastest-growing in Kentucky
- Strategic location between Louisville and Lexington

For Inquiries Contact: George Samutin 312-953-7455 or [gsamutin@phinxequities.com](mailto:gsamutin@phinxequities.com)