

# Bays 1-4

100 Hayes Rd, Thorold, ON L2V 1L8

**HOPA** Presented by  
Hamilton Oshawa Port Authority



## Price: Upon Request

- . 51,450sqft |
- . 2 rail tracks in bay – under hook – 8+ rail car spots |
- . 10t overhead cranes (potential to increase) |
- . Multiple drive in doors |
- . Potential for 6-8 loading docks as per tenant requirements |
- . 55ft ceiling heights |

# Bays 1-4

100 Hayes Rd, Thorold, ON L2V 1L8



Rare industrial space with high ceilings, heavy cranes and indoor rail.

**Larissa Fenn**

[lfenn@hopaports.ca](mailto:lfenn@hopaports.ca)

(905) 518-7632

**Hamilton Oshawa Port Authority**

605 James St N

Hamilton, ON L8L 1K1

The logo for HOPA PORTS. The word "HOPA" is in a large, bold, blue sans-serif font. Below it, the word "PORTS" is in a smaller, blue, spaced-out sans-serif font.

# **Bays 1-4**

100 Hayes Rd, Thorold, ON L2V 1L8

100 Hayes Rd, Thorold, ON L2V 1L8



Thorold Hub - Hayes Road - Aerial

### Listing space

#### 1st Floor

Space Available	51,450 SF
Rental Rate	Upon Request
Date Available	30 Days
Service Type	TBD
Space Type	Relet
Space Use	Industrial
Lease Term	1 - 10 Years

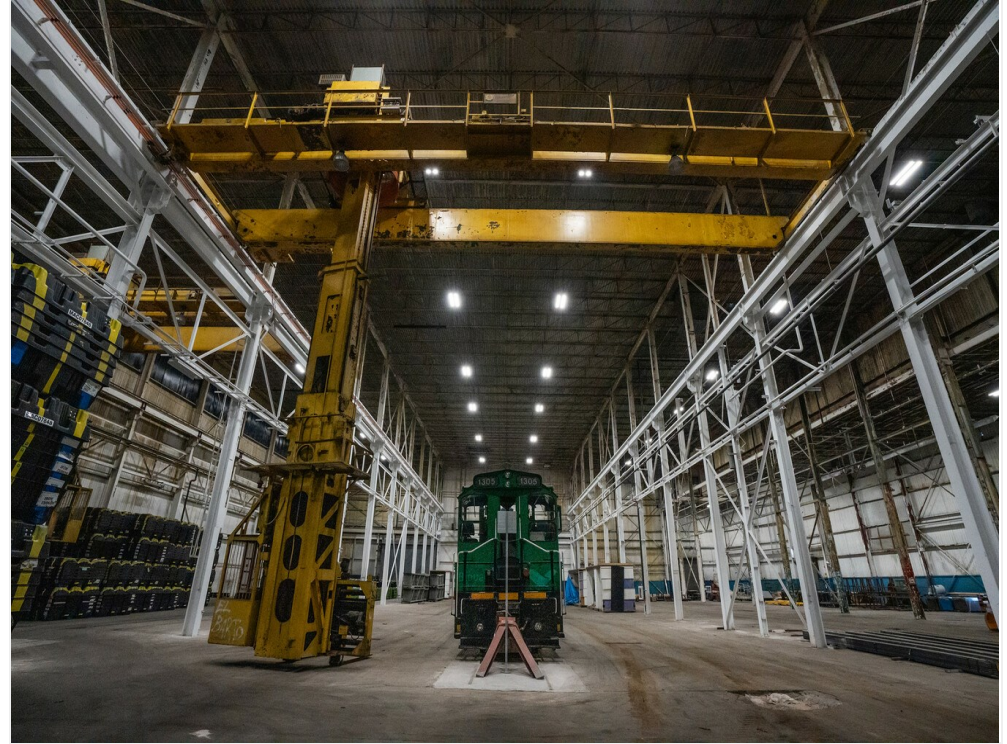
# Bays 1-4

100 Hayes Rd, Thorold, ON L2V 1L8

## Property Photos



TMH-Bays-1-4-10

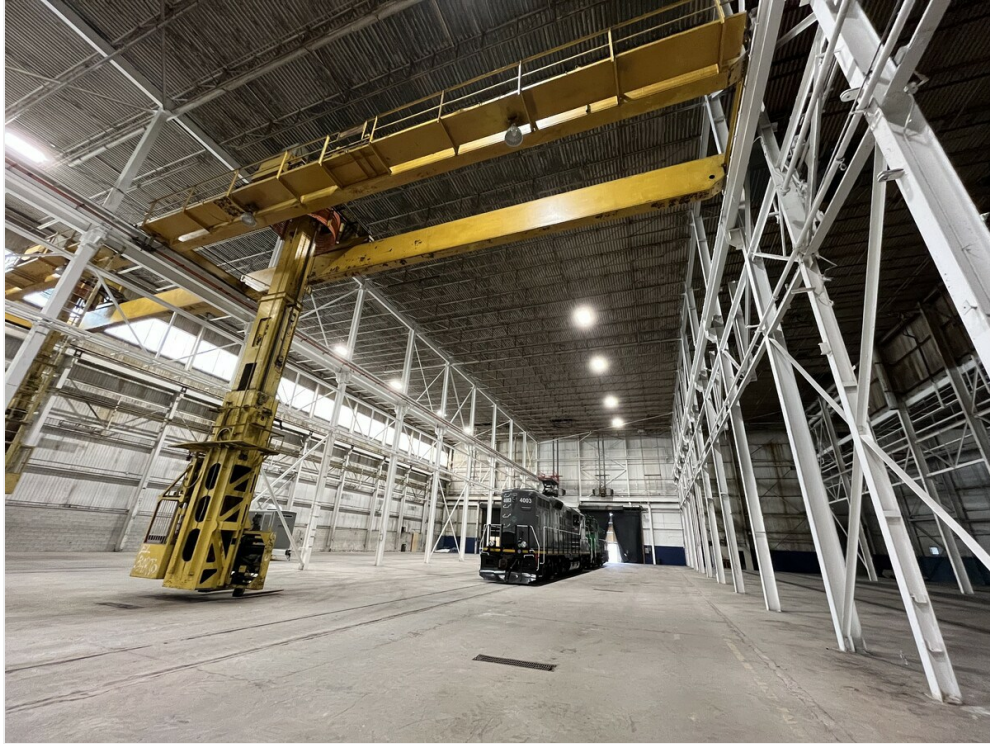


TMH-Bays-1-4-2

# Bays 1-4

100 Hayes Rd, Thorold, ON L2V 1L8

## Property Photos



Bioveld-Hayes-3



Bioveld-Hayes-2

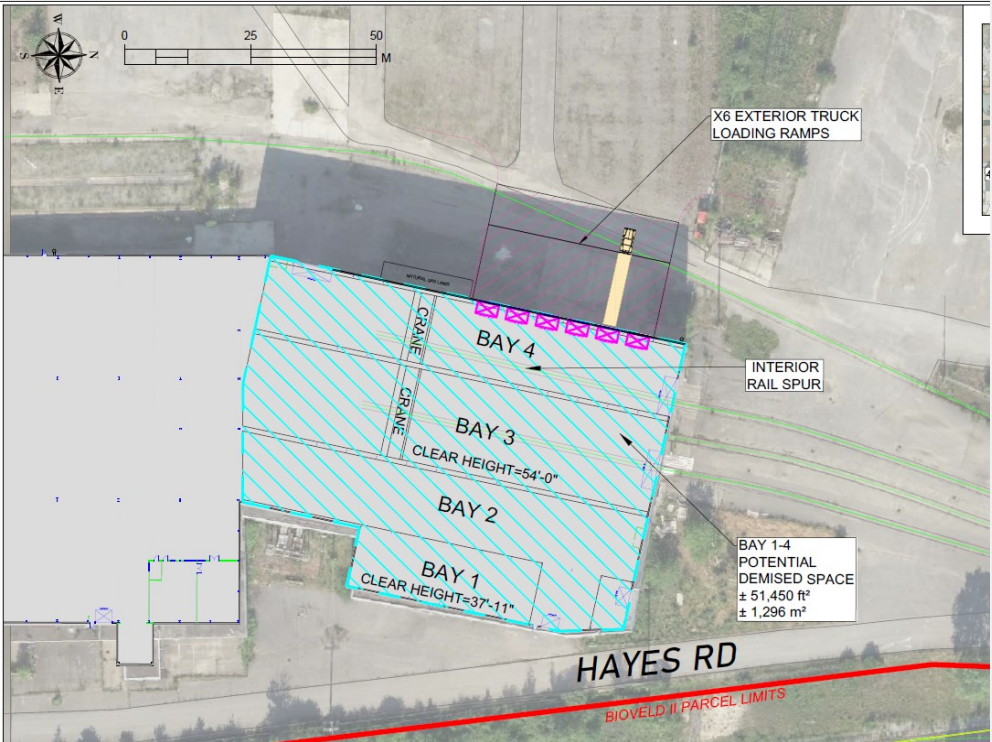
# Bays 1-4

100 Hayes Rd, Thorold, ON L2V 1L8

## Property Photos



TMH-Bays-1-4-3



100 hayes bays 1\_4

# Bays 1-4

100 Hayes Rd, Thorold, ON L2V 1L8

## Location

