

±21,450 SF FLEX BUILDING FOR SALE
201 AVENIDA FABRICANTE
SAN CLEMENTE, CA 92672



LISTING DATA

- ±21,450 SF Two-Story Flex Building
- Elevator Served
- 1 Ground Level Door
- 10' Clear Height
- Free Surface Parking
- Located on 1.41 Acre Parcel
- Available March 1, 2027



Mark Jerue
Senior Vice President
Lic. #01073399
949.790.3121
mjerue@leeirvine.com

Craig Fitterer
Senior Vice President
Lic. #01246929
949.790.3123
cfitterer@leeirvine.com

BJ Fell
Senior Vice President
Lic. #01929179
949.790.3144
bfell@leeirvine.com

GianCarlo Spinosi
Associate
Lic. #02065254
949.790.3109
gspinosi@leeirvine.com

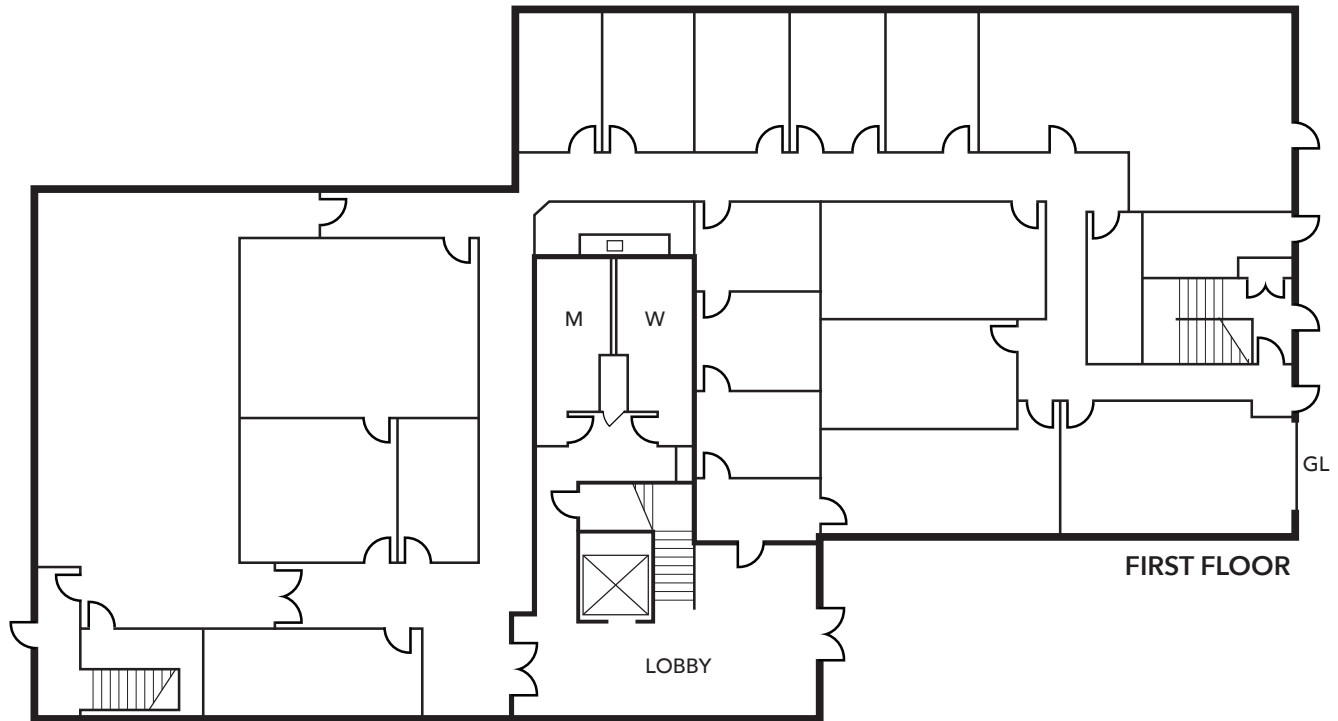
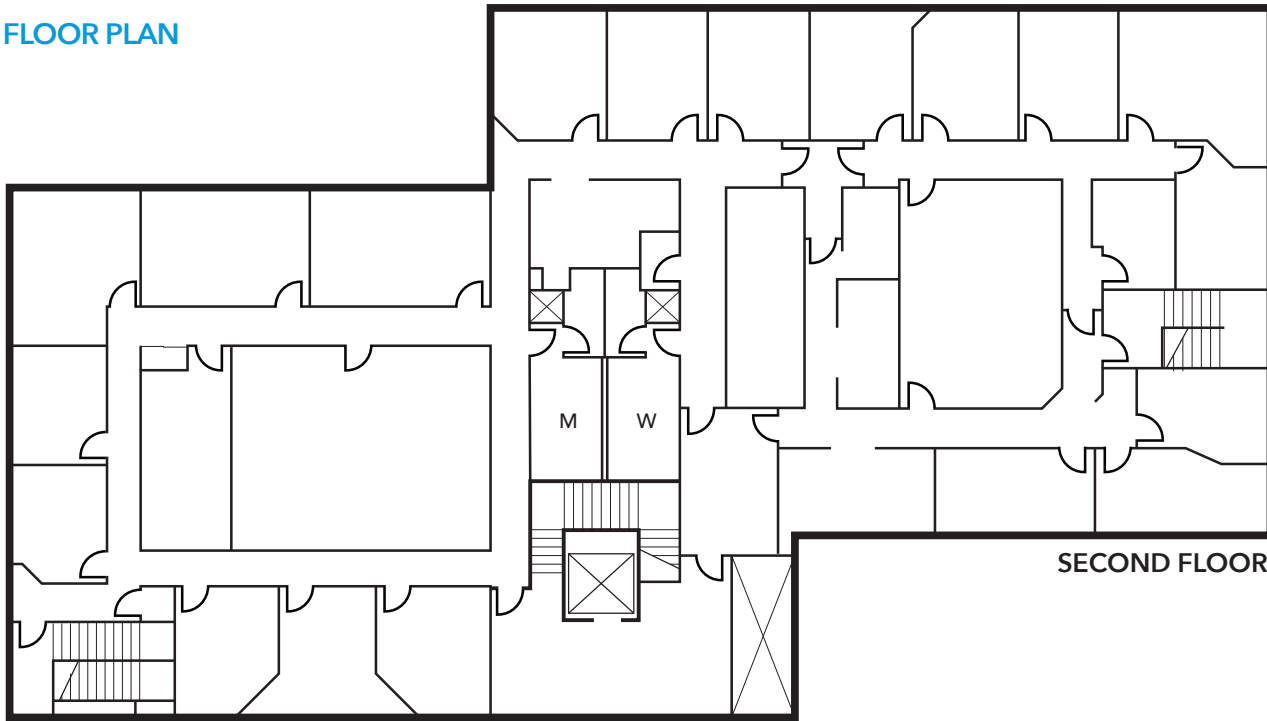
All information furnished regarding property for sale, rental or financing is from sources deemed reliable, but no warranty or representation is made to the accuracy thereof and same is submitted to errors, omissions, change of price, lease or other conditions prior to sale, lease or financing or withdrawal without notice. No liability of any kind is to be imposed on the broker herein.

±21,450 SF FLEX BUILDING FOR SALE

201 AVENIDA FABRICANTE

SAN CLEMENTE, CA 92672

FLOOR PLAN



Mark Jerue
Senior Vice President
Lic. #01073399
949.790.3121
mjerue@leeirvine.com

Craig Fitterer
Senior Vice President
Lic. #01246929
949.790.3123
cfitterer@leeirvine.com

BJ Fell
Senior Vice President
Lic. #01929179
949.790.3144
bfell@leeirvine.com

GianCarlo Spinosi
Associate
Lic. #02065254
949.790.3109
gspinosi@leeirvine.com

All information furnished regarding property for sale, rental or financing is from sources deemed reliable, but no warranty or representation is made to the accuracy thereof and same is submitted to errors, omissions, change of price, rental or other conditions prior to sale, lease or financing or withdrawal without notice. No liability of any kind is to be imposed on the broker herein.