

208 Candi Lane

Columbia, SC 29210

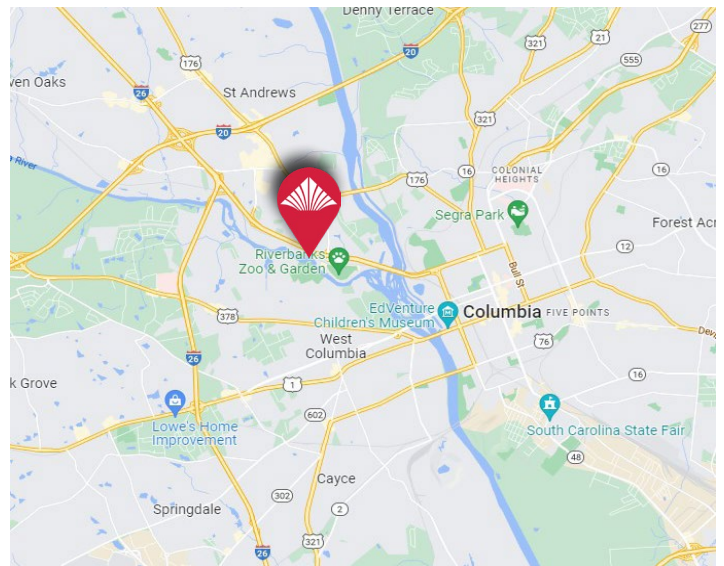


DOWNTOWN COLUMBIA

NEXT TO RIVERBANK ZOO



- ±1,600 SF Office/Retail Space with an open floor plan available for lease near Riverbanks Zoo with frontage on Interstate 126
- Property is well-located on a frontage road of Interstate 126 between the Central Business District and the Irmo/Saint Andrews submarket of Columbia
- Easy access to Interstate 26 and Interstate 20
- Zoning: EC (Light Industrial and General Commercial)
- Pylon signage available overlooking I-26
- Approx. 75,000 vehicles per day on I-26



LEASE RATE: ~~\$2,500.00~~ \$2,000.00/Month Net of Utilities



CONTACT:

JOHN MILLS | john.mills@wilsonkibler.com | 803.255.8628

WILLIAM GREGG | wgregg@wilsonkibler.com | 803.255.8654

SAM GAMBLE | sam.gamble@wilsonkibler.com | 803.673.7952

WILSON KIBLER | 1545 Sumter Street | 803.779.8600 | www.wilsonkibler.com





208 Candi Lane

Columbia, SC 29210

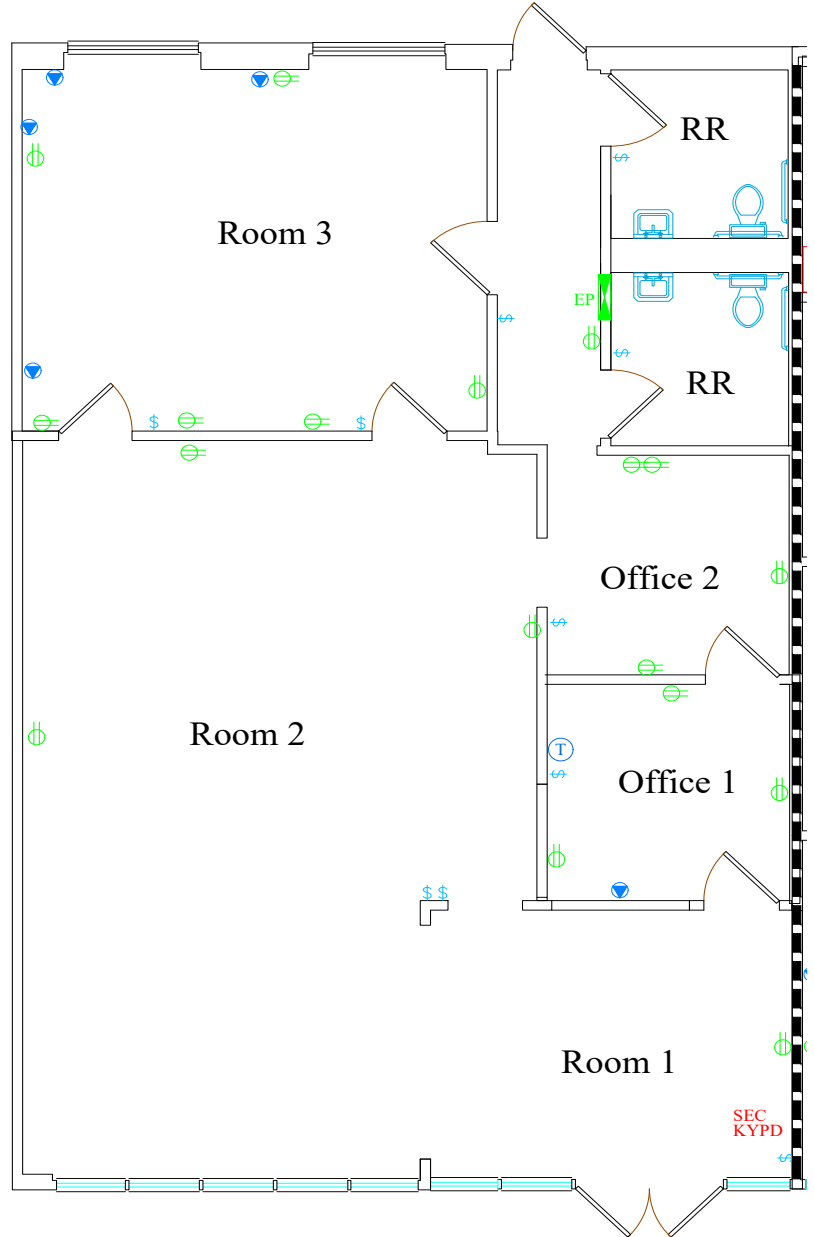


DOWNTOWN COLUMBIA

NEXT TO RIVERBANK ZOO



208 Candi Lane
208 Candi Lane, Columbia, SC, 29210



CONTACT:

JOHN MILLS | john.mills@wilsonkibler.com | 803.255.8628

WILLIAM GREGG | wgregg@wilsonkibler.com | 803.255.8654

SAM GAMBLE | sam.gamble@wilsonkibler.com | 803.673.7952

WILSON KIBLER | 1545 Sumter Street | 803.779.8600 | www.wilsonkibler.com



Wilson Kibler