



# SOUTH PARK GROUP

[www.southparkgroup.com](http://www.southparkgroup.com)



## FOR LEASE

### RETAIL / YOGA / GYM

145 N. La Brea Avenue, Unit E  
Los Angeles, California 90036

This well-maintained yoga studio space will be available with 30-day notice to the current tenant to vacate. Located in a desirable area and offers a fantastic opportunity for a new business. Features include beautiful hardwood floors and high ceilings creating an open and airy atmosphere. **"DO NOT DISTURB TENANTS"**

#### AVAILABLE SPACE

**Size:** Approximately 3,600 rentable sqft

**Rate:** \$15,000 per month, Modified Gross

**Parking:** Four valet spaces included and up to 30 additional spaces available (negotiable)

**Available:** In sixty days

#### SAM MINASIAN

Tel. 323.782.1261

E. [samminasian@southparkgroup.com](mailto:samminasian@southparkgroup.com)

No. 01212823

SOUTH PARK GROUP | 8322 Beverly Blvd., Suite 301 | Los Angeles, CA 90048

This information has been furnished by sources that we deem reliable, but for which we assume no liability. The information contained herein is given, in confidence, with the understanding that all negotiations pertaining to this property be handled through the submitting office. All measurements are approximate.

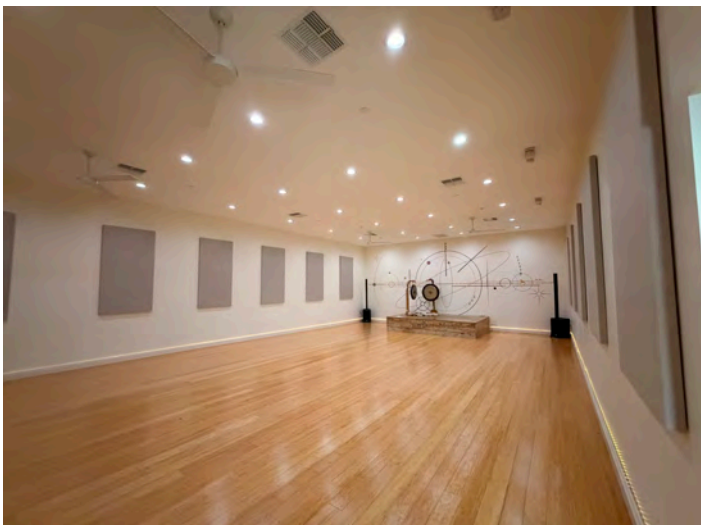


# SOUTH PARK GROUP

[www.southparkgroup.com](http://www.southparkgroup.com)

## INTERIOR

145 N. La Brea Avenue, Unit E, Los Angeles, California 90036



**SOUTH PARK GROUP | 8322 Beverly Blvd., Suite 301 | Los Angeles, CA 90048**

This information has been furnished by sources that we deem reliable, but for which we assume no liability. The information contained herein is given, in confidence, with the understanding that all negotiations pertaining to this property be handled through the submitting office. All measurements are approximate.