



CUMMING, GA

1305 BUFORD HWY

AVAILABLE FOR SALE



PROJECT DETAILS

1305 BUFORD HWY • AVAILABLE • LAND

PROPERTY HIGHLIGHTS

- 6.40 acres
- Zoned CBD - Forsyth County
- Ideal for: Auto, Restaurant, Medical
- Full Access on Hwy 20
- ADT of 42,000
- All Utilities

OFFERING SUMMARY

SALE PRICE	Call for Pricing
AVAILABLE SF	
LOT SIZE	6.4 Acres
PRICE / ACRE	-

DEMOGRAPHICS

TOTAL HOUSEHOLDS

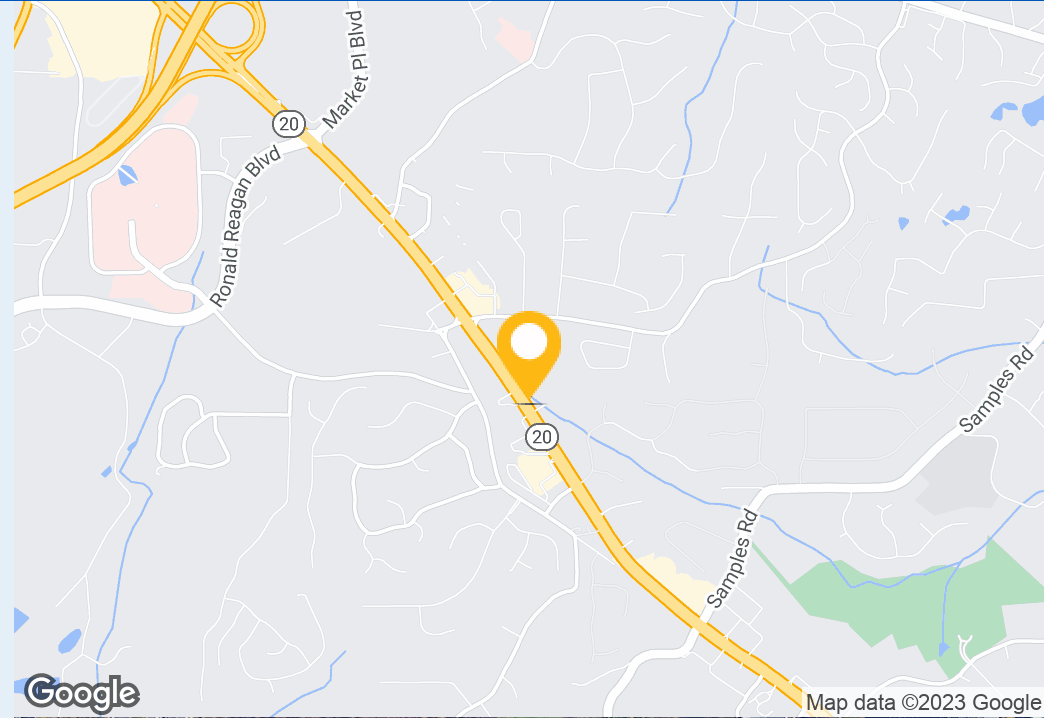
1 MILE	3 MILES	5 MILES
1,875	14,218	37,550

TOTAL POPULATION

1 MILE	3 MILES	5 MILES
3,351	28,989	79,713

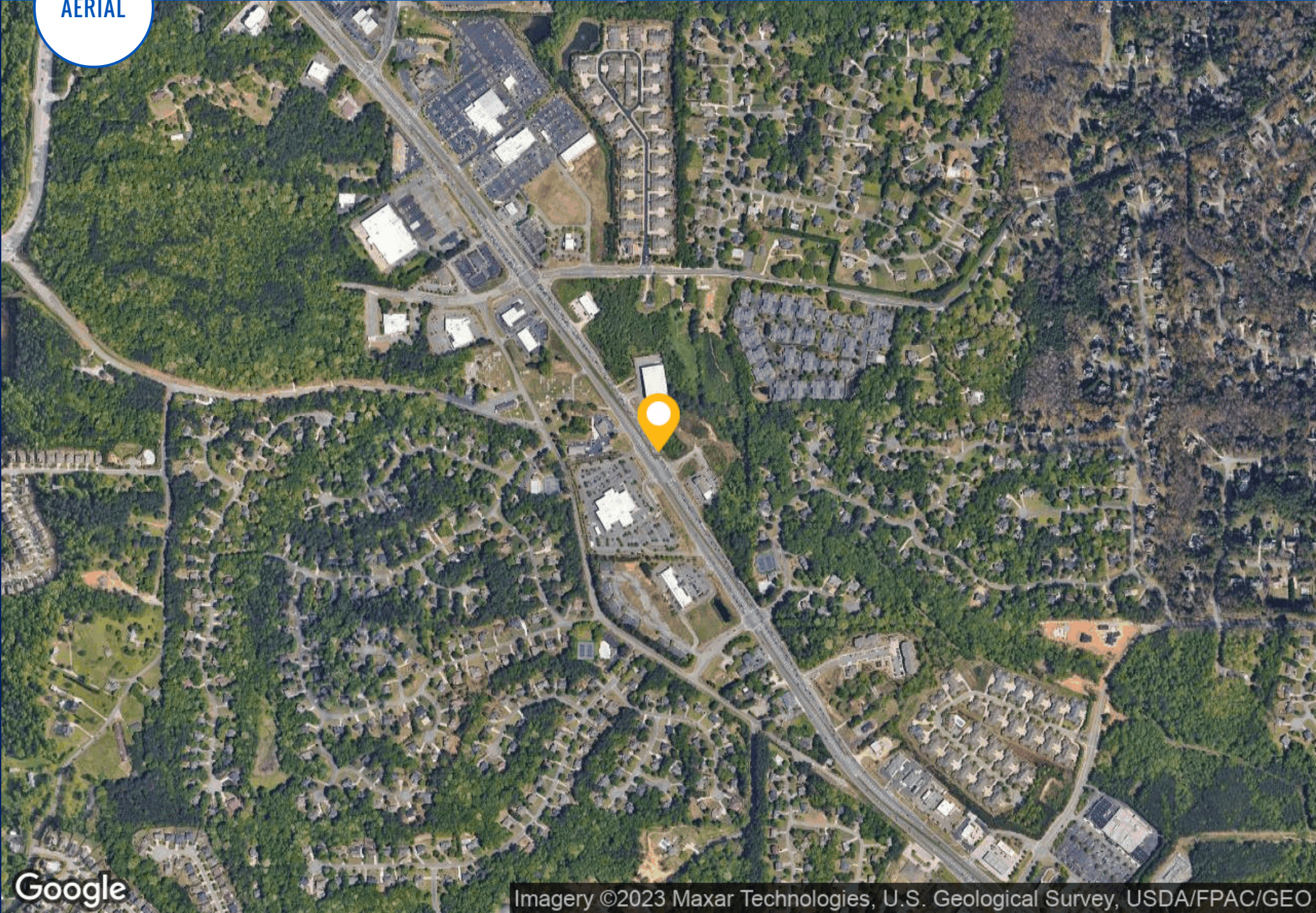
MEDIAN HH INCOME

1 MILE	3 MILES	5 MILES
\$117,464	\$108,985	\$119,641



AERIAL

1305 BUFORD HWY • AVAILABLE • LAND



Google

Imagery ©2023 Maxar Technologies, U.S. Geological Survey, USDA/FPAC/GEO

SITE PLAN

1305 BUFORD HWY • AVAILABLE • LAND

