



Keegan & Coppin
COMPANY, INC.

FOR LEASE

104 MAXWELL COURT
SANTA ROSA, CA

WAREHOUSE/SHOWROOM



Go beyond broker.

PRESENTED BY:

MIKE FLITNER, PARTNER
LIC # 00840890 (707) 528-1400, EXT 239
MFLITNER@KEEGANCOPPIN.COM

BRYAN ALTAMIRANO, AGENT
LIC # 02204412 (707) 528-1400, EXT 237
BALTAMIRANO@KEEGANCOPPIN.COM



PROPERTY DETAILS



104 MAXWELL COURT
SANTA ROSA, CA

**WAREHOUSE/
SHOWROOM**

PROPERTY INFORMATION

HIGHLIGHTS

- Prime industrial location within Santa Rosa
- 10,736+/- sq. ft warehouse including 1,500+/- sf showroom/office space/fenced yard
- Two roll-up doors for loading/unloading
- 12 parking spaces in front of the building and loading area currently utilized as fenced yard space
- 14' ceiling height, ideal for warehousing or storage
- Easy access to Highway 101 via College Ave or Highway 12 via Dutton Ave.

DESCRIPTION OF PREMISES

The property at 104 Maxwell Ct, Santa Rosa, CA is a well-located industrial building within a bustling industrial zone. With 10,736 square feet available at a competitive \$1.15 per sf modified gross it's ideal for businesses needing a showroom and warehouse combination. The building offers two roll-up doors for efficient operations, 12 parking spaces, and high ceilings for storage needs. Located just minutes from Highway 101, this site enjoys excellent accessibility, making it suitable for various industrial and commercial uses in a well-connected part of Santa Rosa.

LEASE TERMS

Rate

\$1.15 psf Modified Gross

Term

3 - 10 Years

FEATURES

Parking

12 Spaces + Storage Yard

Zoning

MMU (Maker Mixed Use)

PRESENTED BY:

MIKE FLITNER, PARTNER
KEEGAN & COPPIN CO., INC.
 LIC #0840890 (707) 528-1400, EXT 239
 MFLITNER@KEEGANCOPPIN.COM

BRYAN ALTAMIRANO, AGENT
KEEGAN & COPPIN CO., INC.
 LIC #02204412 (707) 528-1400, EXT 237
 BALTAMIRANO@KEEGANCOPPIN.COM

The above information, while not guaranteed, has been secured from sources we believe to be reliable. Submitted subject to error, change or withdrawal. An interested party should verify the status of the property and the information herein.

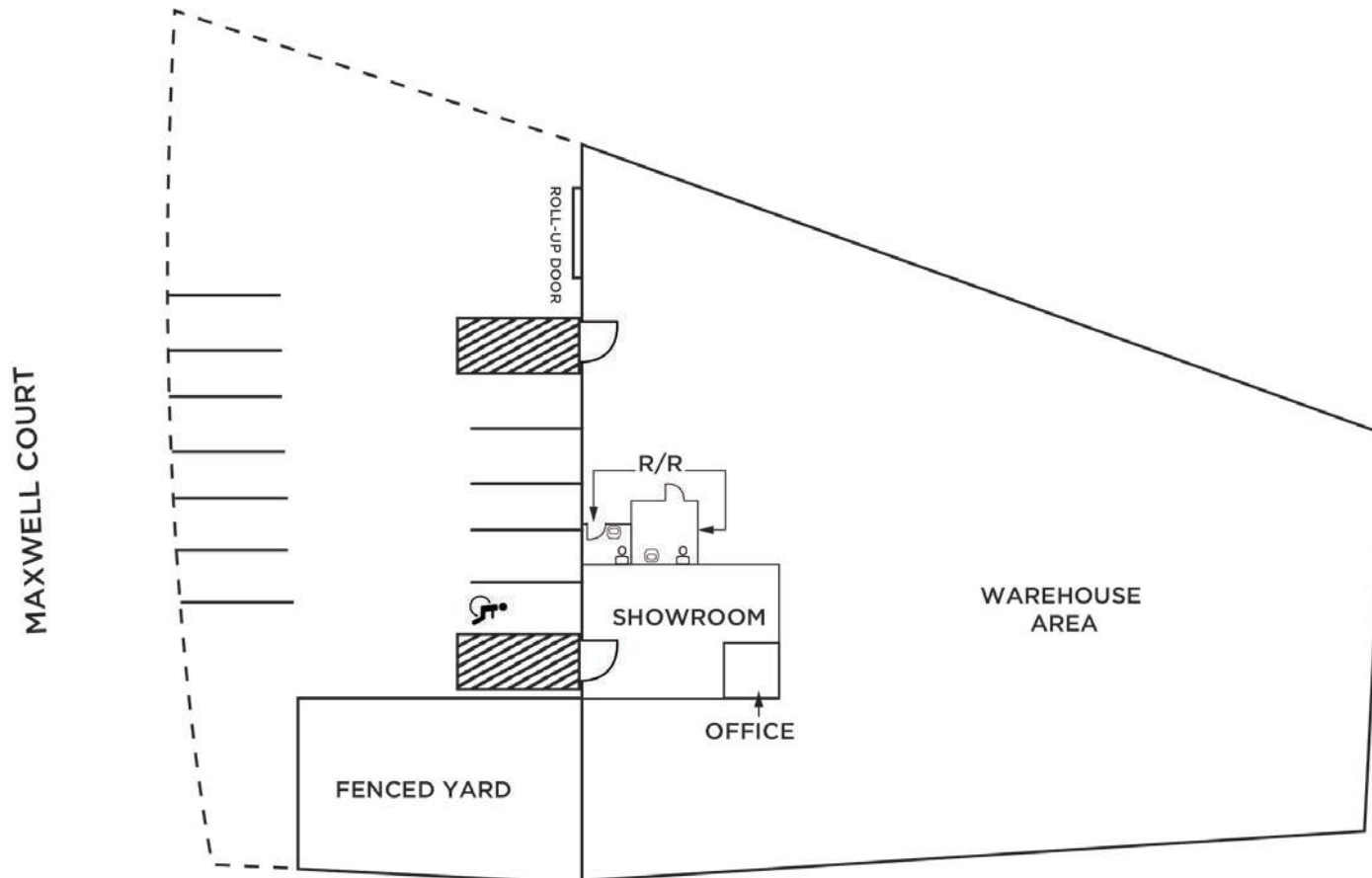


SITE PLAN



104 MAXWELL COURT
SANTA ROSA, CA

**WAREHOUSE/
SHOWROOM**



PRESENTED BY:

MIKE FLITNER, PARTNER
KEEGAN & COPPIN CO., INC.
LIC #0840890 (707) 528-1400, EXT 239
MFLITNER@KEEGANCOPPIN.COM

BRYAN ALTAMIRANO, AGENT
KEEGAN & COPPIN CO., INC.
LIC #02204412 (707) 528-1400, EXT 237
BALTAMIRANO@KEEGANCOPPIN.COM

The above information, while not guaranteed, has been secured from sources we believe to be reliable. Submitted subject to error, change or withdrawal. An interested party should verify the status of the property and the information herein.



PROPERTY PHOTOS



104 MAXWELL COURT
SANTA ROSA, CA

**WAREHOUSE/
SHOWROOM**



PRESENTED BY:

MIKE FLITNER, PARTNER
KEEGAN & COPPIN CO., INC.
LIC #0840890 (707) 528-1400, EXT 239
MFLITNER@KEEGANCOPPIN.COM

BRYAN ALTAMIRANO, AGENT
KEEGAN & COPPIN CO., INC.
LIC #02204412 (707) 528-1400, EXT 237
BALTAMIRANO@KEEGANCOPPIN.COM

The above information, while not guaranteed, has been secured from sources we believe to be reliable. Submitted subject to error, change or withdrawal. An interested party should verify the status of the property and the information herein.

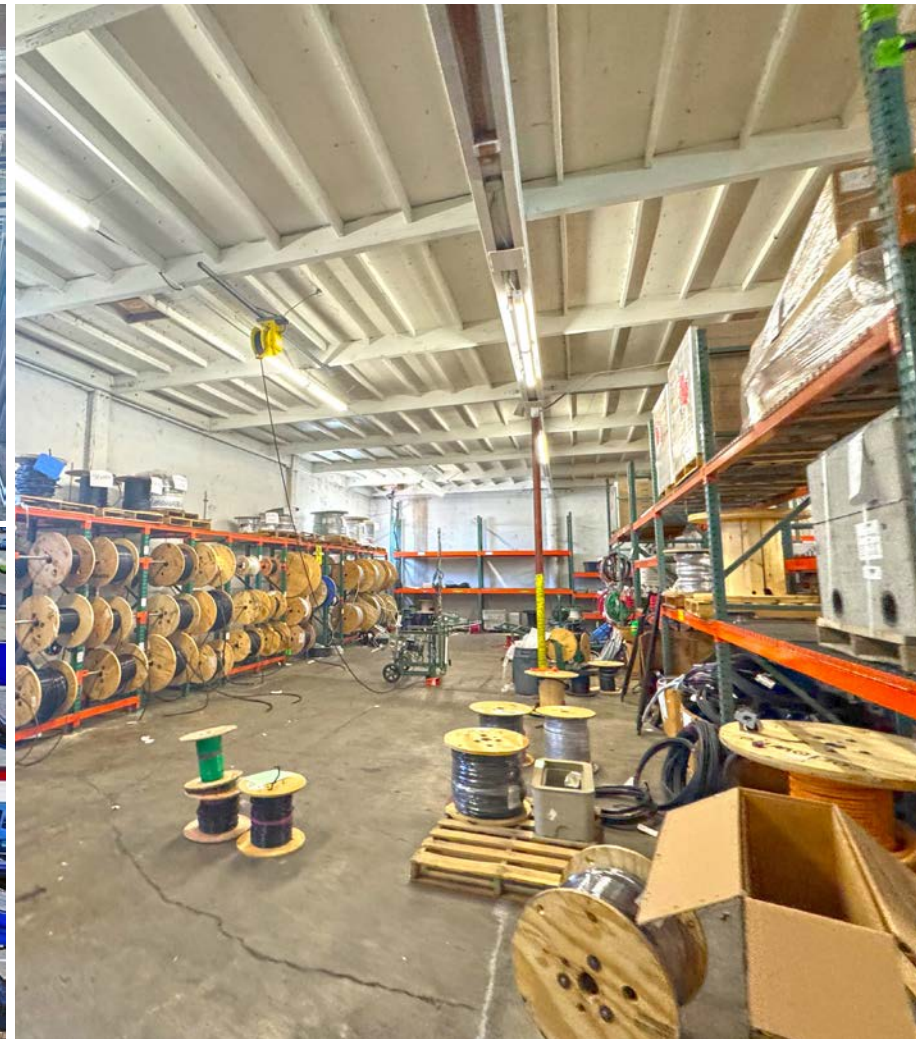


PROPERTY PHOTOS



104 MAXWELL COURT
SANTA ROSA, CA

WAREHOUSE/
SHOWROOM



PRESENTED BY:

MIKE FLITNER, PARTNER
KEEGAN & COPPIN CO., INC.
LIC #0840890 (707) 528-1400, EXT 239
MFLITNER@KEEGANCOPPIN.COM

BRYAN ALTAMIRANO, AGENT
KEEGAN & COPPIN CO., INC.
LIC #02204412 (707) 528-1400, EXT 237
BALTAMIRANO@KEEGANCOPPIN.COM

The above information, while not guaranteed, has been secured from sources we believe to be reliable. Submitted subject to error, change or withdrawal. An interested party should verify the status of the property and the information herein.



AREA DESCRIPTION



104 MAXWELL COURT
SANTA ROSA, CA

WAREHOUSE/
SHOWROOM

DESCRIPTION OF AREA

Centrally located with convenient access to Highway 101 as well as Downtown Santa Rosa. The building is located just south of the prestigious Santa Rosa Business Park on North Dutton Avenue and is bordered by the SMART Train Line to the east. Coddington Regional Mall is 5 minutes to the north and Santa Rosa Plaza is 4 minutes to the south.

NEARBY AMENITIES

- Retail & Food Service at Coddington Mall & Santa Rosa Plaza
- Services along College Ave. corridor

TRANSPORTATION ACCESS

- Highway 101 via College Avenue & Highway 12 via Dutton Avenue
- Public Transport: Accessible via multiple bus stops along North Dutton Avenue



PRESENTED BY:

MIKE FLITNER, PARTNER
KEEGAN & COPPIN CO., INC.
LIC #0840890 (707) 528-1400, EXT 239
MFLITNER@KEEGANCOPPIN.COM

BRYAN ALTAMIRANO, AGENT
KEEGAN & COPPIN CO., INC.
LIC #02204412 (707) 528-1400, EXT 237
BALTAMIRANO@KEEGANCOPPIN.COM

The above information, while not guaranteed, has been secured from sources we believe to be reliable. Submitted subject to error, change or withdrawal. An interested party should verify the status of the property and the information herein.

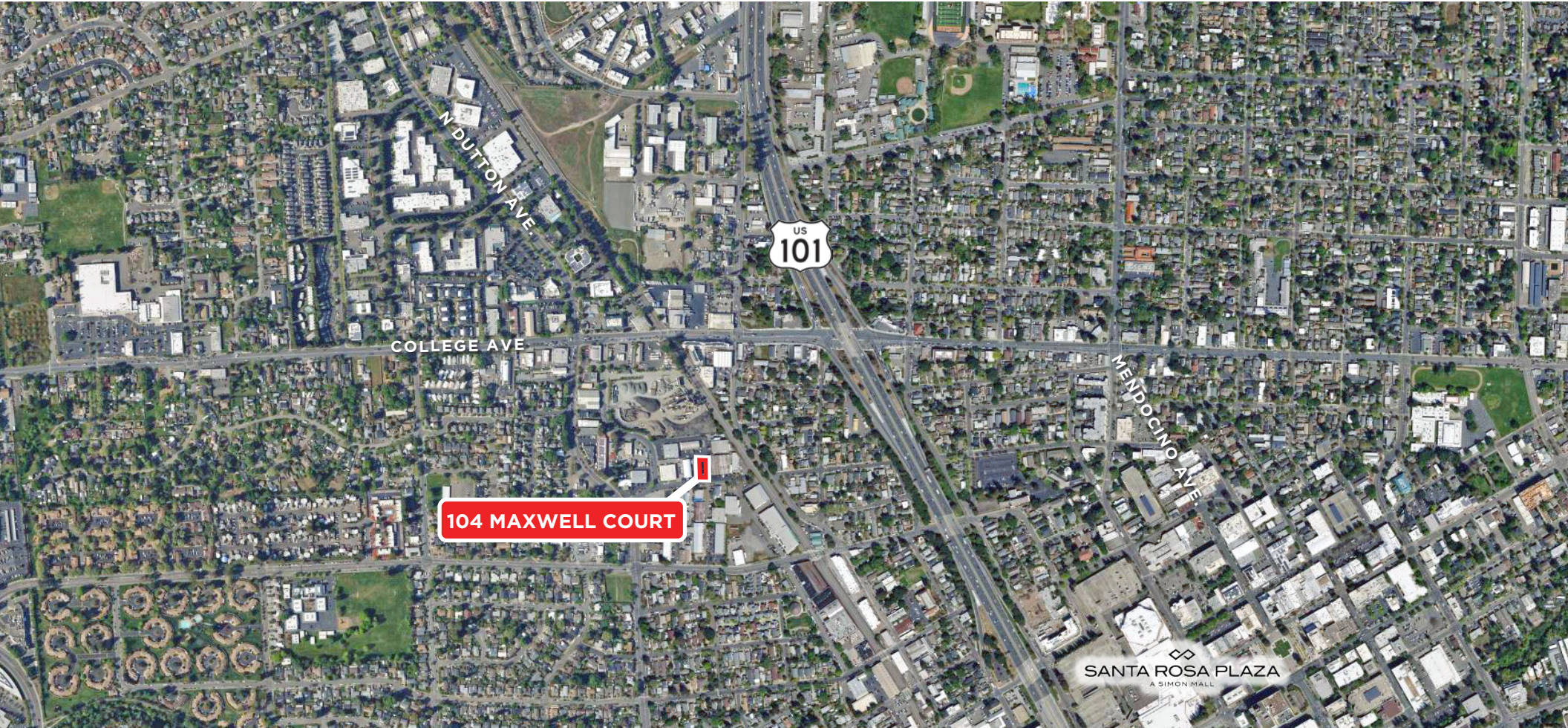


LOCATION MAP



104 MAXWELL COURT
SANTA ROSA, CA

**WAREHOUSE/
SHOWROOM**



Keegan & Coppin Co., Inc.
1355 North Dutton Avenue
Santa Rosa, CA 95401
www.keegancoppin.com
(707) 528-1400

The above information, while not guaranteed, has been secured from sources we believe to be reliable. Submitted subject to error, change or withdrawal. An interested party should verify the status of the property and the information herein.

REPRESENTED BY:

MIKE FLITNER, PARTNER
LIC # 00840890 (707) 528-1400, EXT 239
MFLITNER@KEEGANCOPPIN.COM

BRYAN ALTAMIRANO, AGENT
LIC # 02204412 (707) 528-1400, EXT 237
BALTAMIRANO@KEEGANCOPPIN.COM