

POINT WEST CORPORATE CENTER

1610 ARDEN WAY, SACRAMENTO, CA



GREAT CENTRAL LOCATION
WITH BEST-IN-CLASS AMENITIES

PROMINENT BUILDING SIGNAGE AVAILABLE

Exclusively Marketed By: _____

NEWMARK



pointwestportfolio.com

Jack Blackmon

916.494.2349

jack.blackmon@nrmk.com

CA RE License #01999561

Lucas Lugo

916.569.2322

lucas.lugo@nrmk.com

CA RE License #01916673

Jodie Robinson

916.569.2318

jodie.robinson@nrmk.com

CA RE License #02214357

POINT WEST CORPORATE CENTER

1610 ARDEN WAY
SACRAMENTO, CA

PROPERTY HIGHLIGHTS



Classic brick architecture with expansive windowline and courtyard views



Professional Property Management and facilities engineer



Onsite cafe, conference facility and fitness center with showers



Beautiful courtyard with shaded outdoor seating and outdoor water feature



Located within minutes of Sacramento's CBD



Restaurants and retail services immediately adjacent to the property



Immediate freeway access to Business Hwy 80



Onsite security patrol



Short walk to Arden Fair Mall

CONCIERGE SERVICES



- Concierge Services for personal and professional assistance
- Moving concierge for data cabling, and moving facilitation
- Construction management team
- Building Engineers with advanced experience in building systems
- Professional Property Management services with local representatives

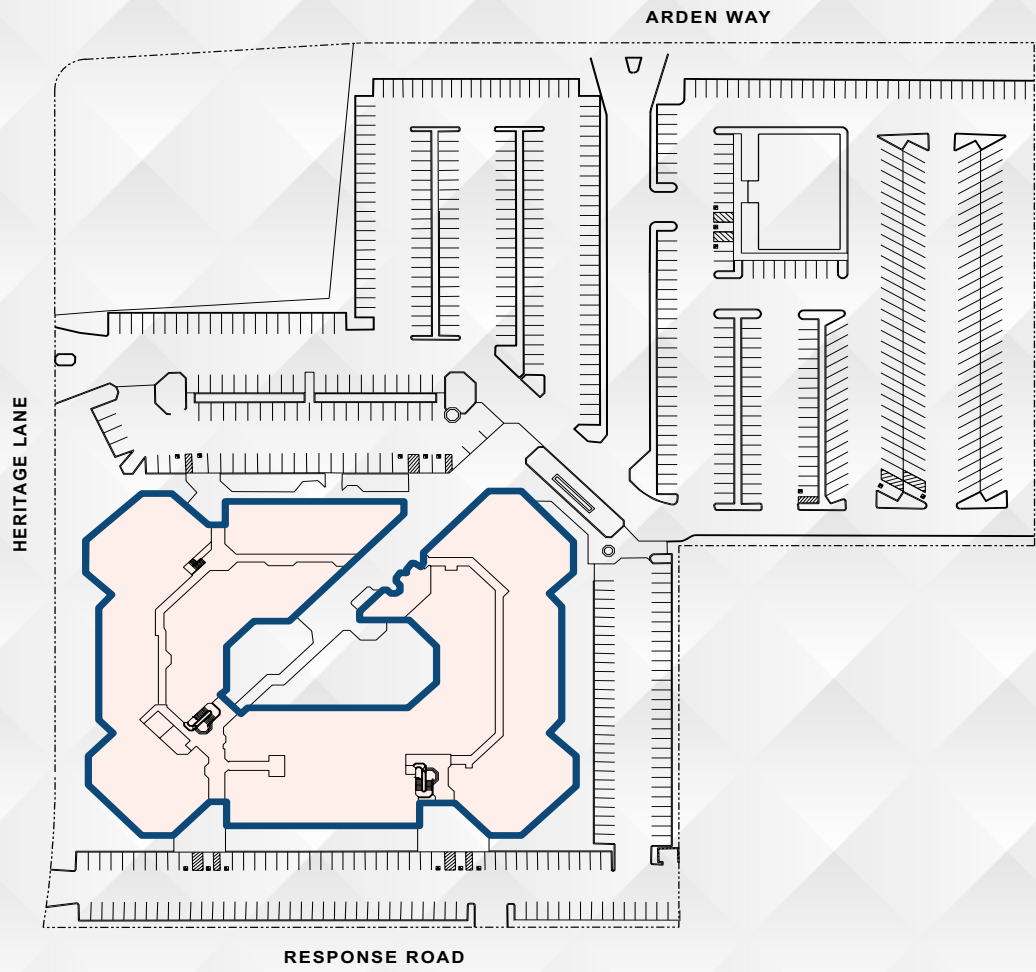


POINT WEST CORPORATE CENTER

1610 ARDEN WAY
SACRAMENTO, CA



SITE PLAN



POINT WEST CORPORATE CENTER

1610 ARDEN WAY
SACRAMENTO, CA

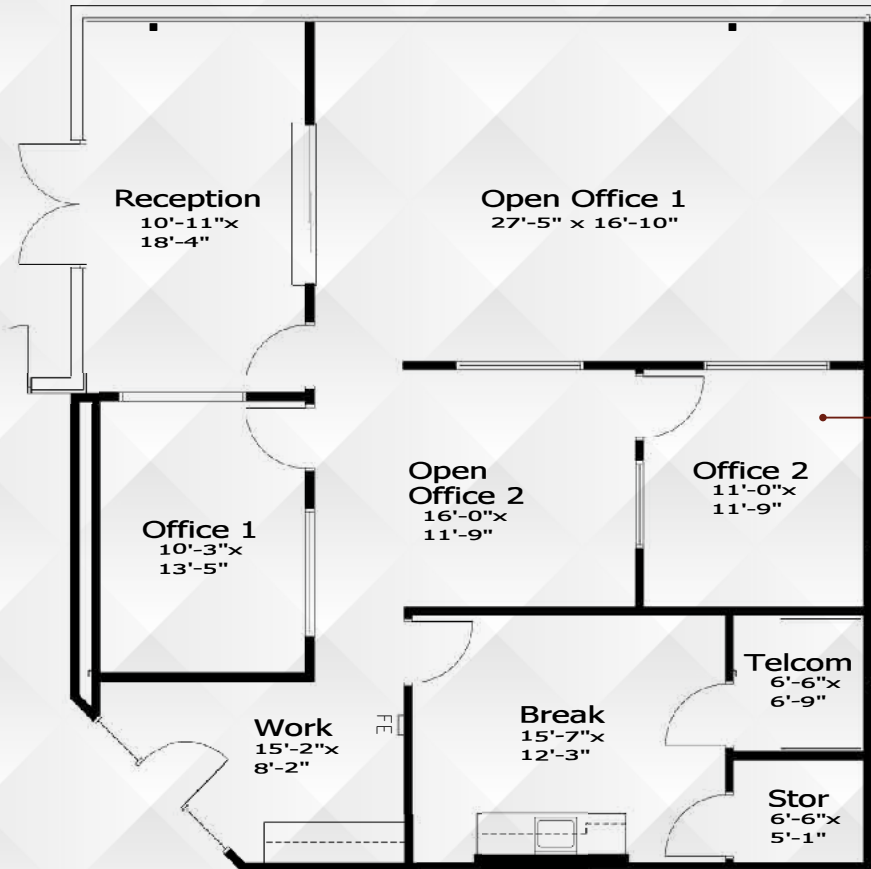
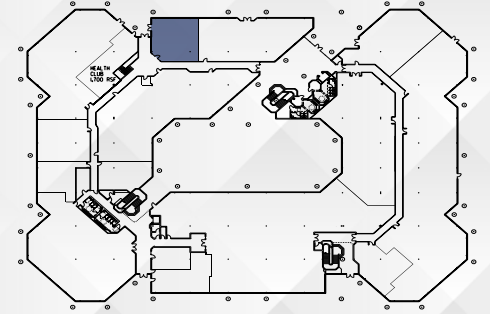
AMENITIES MAP



POINT WEST CORPORATE CENTER

1610 ARDEN WAY
SACRAMENTO, CA

FLOOR PLANS



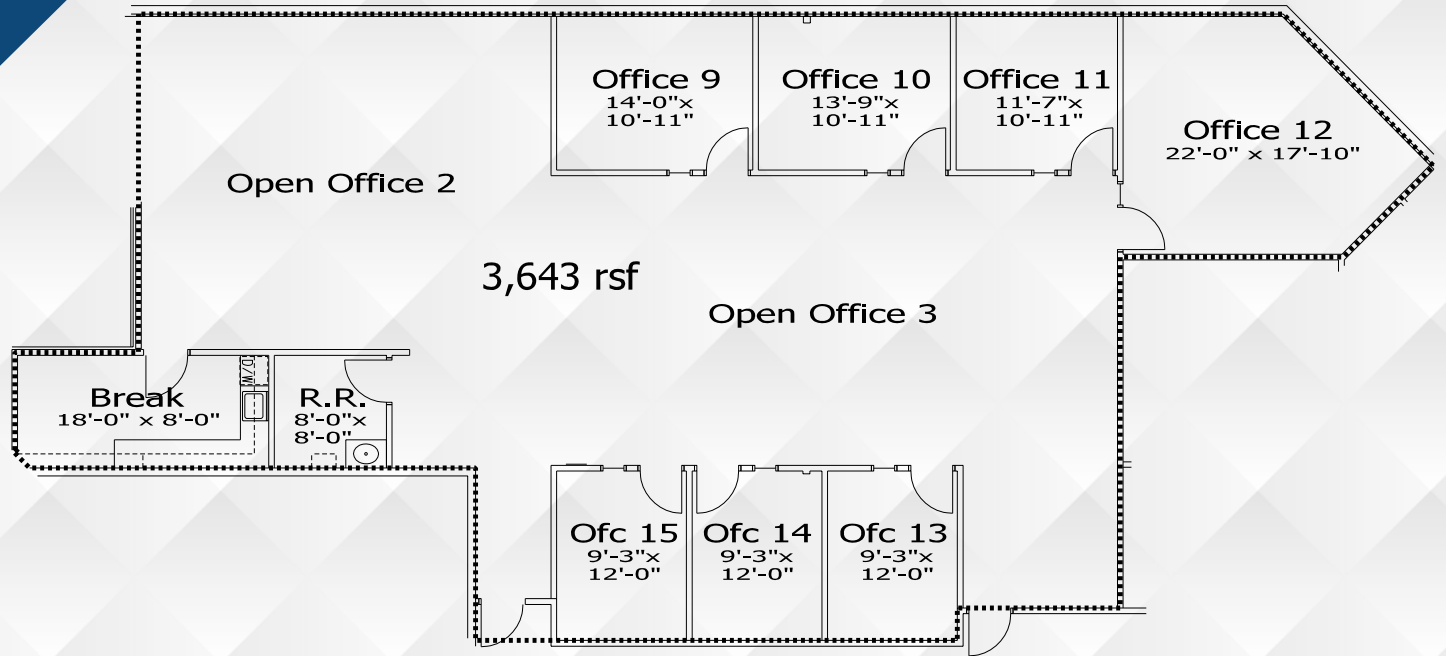
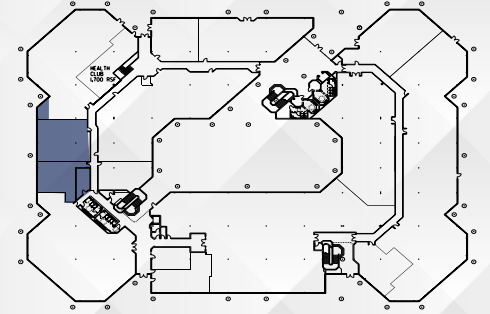
Suite
Images

FIRST FLOOR | 1,836 RSF | SUITE 119

POINT WEST CORPORATE CENTER

1610 ARDEN WAY
SACRAMENTO, CA

FLOOR PLANS

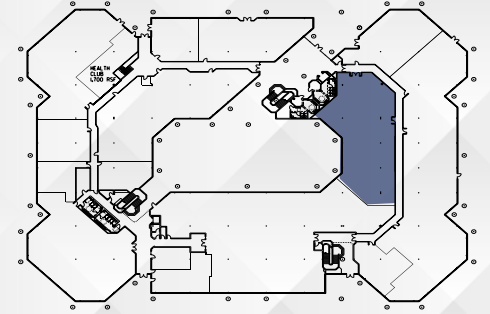
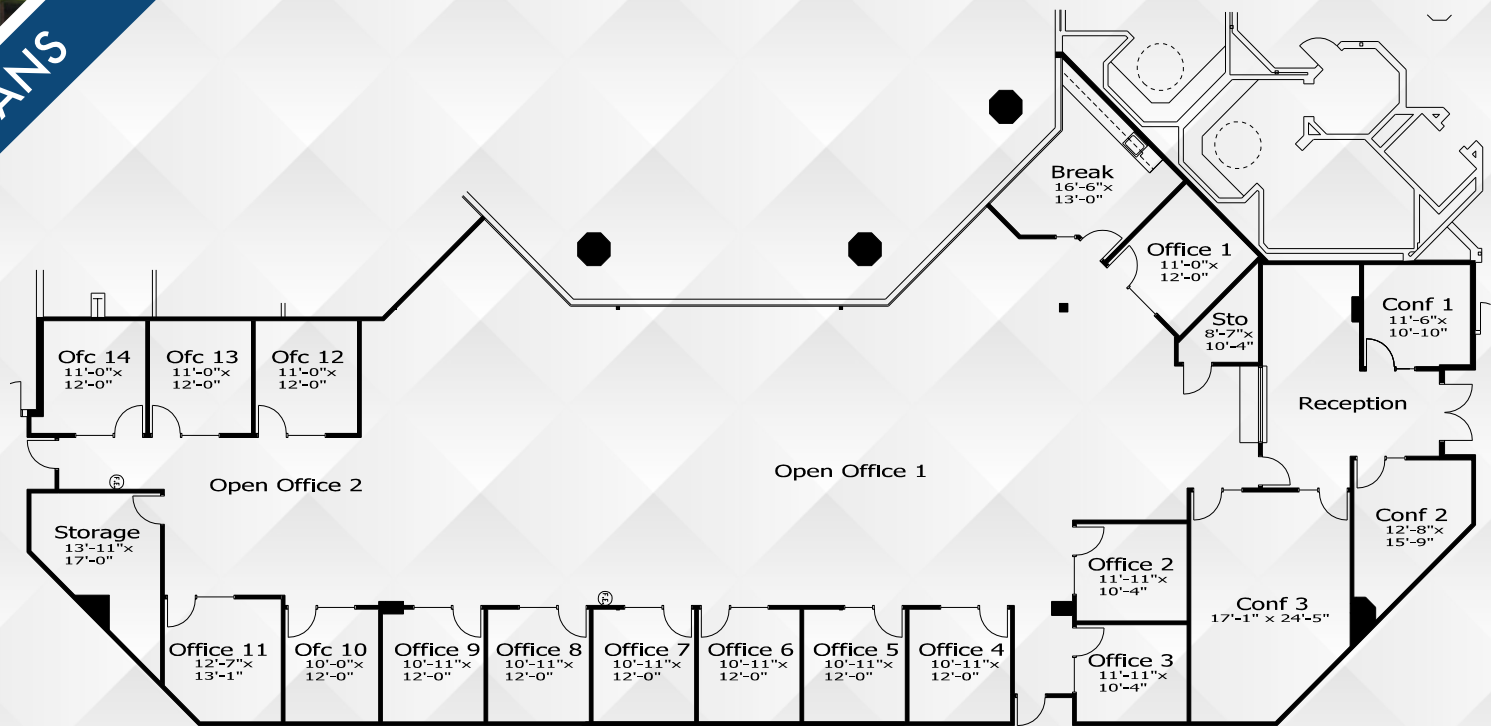


FIRST FLOOR | 3,643 RSF | SUITE 150

POINT WEST CORPORATE CENTER

1610 ARDEN WAY
SACRAMENTO, CA

FLOOR PLANS



FIRST FLOOR | 8,116 RSF | SUITE 190

POINT WEST CORPORATE CENTER

1610 ARDEN WAY, SACRAMENTO, CA



DISCLAIMER: The distributor of this communication is performing acts for which a real estate license is required. The information contained herein has been obtained from sources deemed reliable but has not been verified and no guarantee, warranty or representation, either express or implied, is made with respect to such information. Terms of sale or lease and availability are subject to change or withdrawal without notice.

NEWMARK



pointwestportfolio.com

Jack Blackmon
916.494.2349
jack.blackmon@nmrk.com
CA RE License #01999561

Lucas Lugo
916.569.2322
lucas.lugo@nmrk.com
CA RE License #01916673

Jodie Robinson
916.569.2318
jodie.robinson@nmrk.com
CA RE License #02214357

Exclusively Marketed By: _____