



## 6703 Rickyval Street Weston, WI 54476

### Property Features

- Metal building and sloped roof
- Inside ceiling height ranges from 20'-23'
- Includes 1 service door (16' H x 14' W)
- 1 semi-truck dock with leveler
- 400 AMP, 3-phase power
- High speed internet available
- Easy access to major highways

### Details

6,200 SF of manufacturing warehouse space for lease in the Weston Business and Technology Park.

**LEASE RATE**      **\$6.00/SF NNN**

LEASE TERMS      MULTIPLE YEARS

BUILDING SIZE      6,200 SF

ACRES      2.6

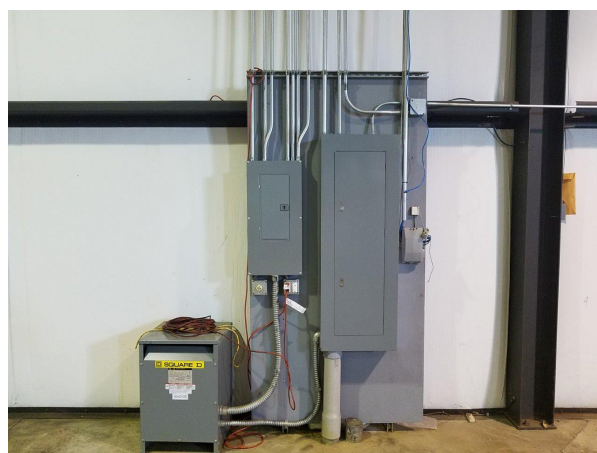
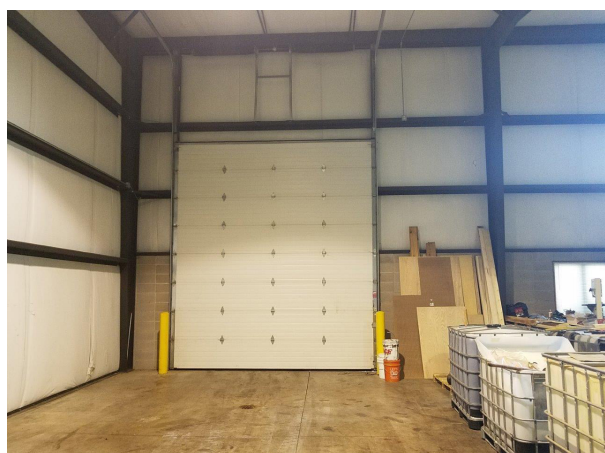
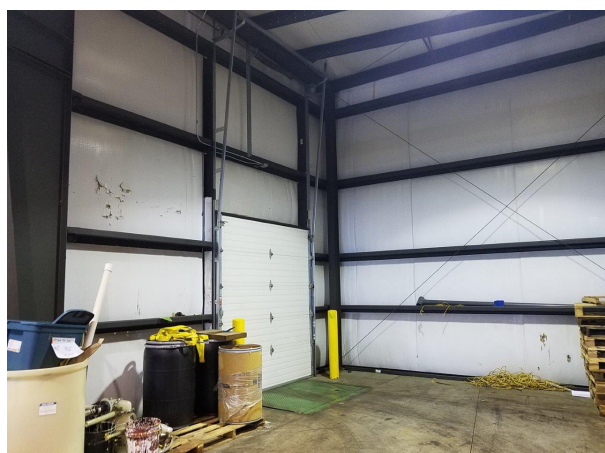
YEAR BUILT      2003

ZONING      L-1 LIMITED INDUSTRIAL

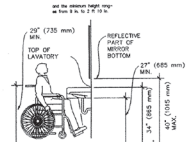
PARKING      PRIVATE, PAVED

For more information:

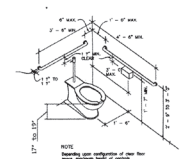
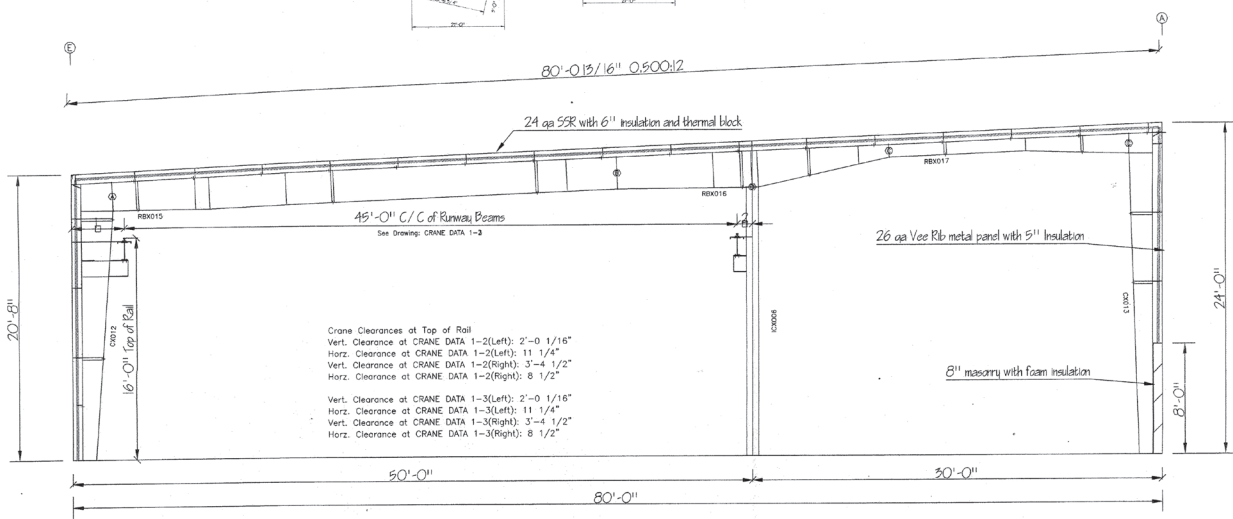
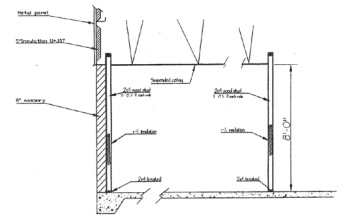
M.C. "Ark" Rhowmine, MPA, BPOR  
715.297.1953 • [ArkR@naipfefferle.com](mailto:ArkR@naipfefferle.com)



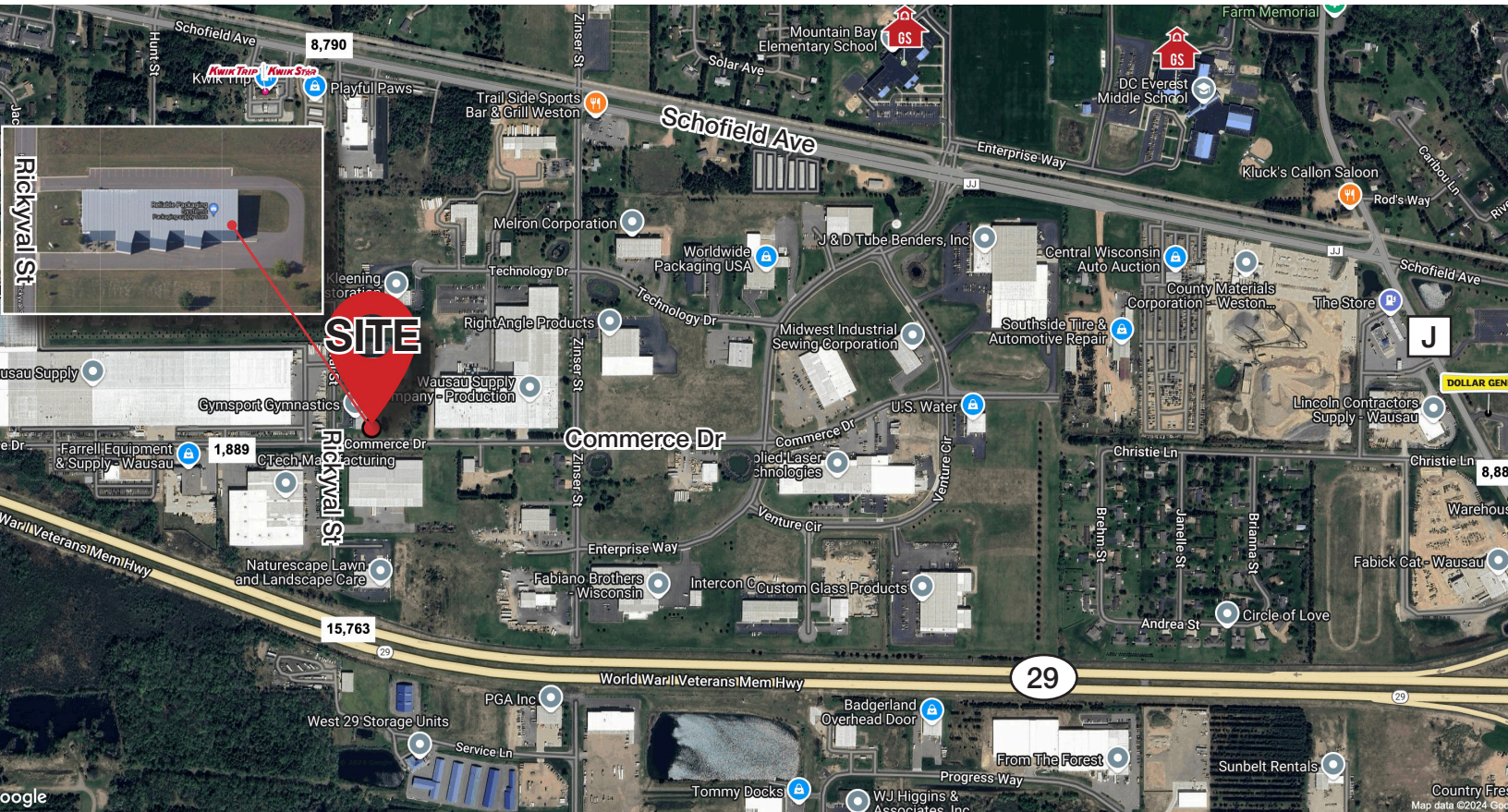
## Floor Plan



Interior restroom wall to be 2"x4" wood studs with 1/2" drywall topped and painted with a washable paint. The ceiling to be suspended with vinyl covered sheet rock panels. The floor may be painted with a washable paint with vinyl base or may be ceramic tile with a ceramic base.



**NOTE:**  
ALL WALK DOORS 3' X 7'  
✓ LEVER HANDLES  
■ EXIT LIGHT  
○ FIRE EXT. by owner



## 2024 Demographics

	3 MILES	5 MILES	10 MILES
ESTIMATED POPULATION	11,724	26,725	88,018
ESTIMATED HOUSEHOLDS	4,760	11,201	37,758
EST AVERAGE HOUSEHOLD INCOME	\$104,208	\$106,473	\$99,473

## Daily Traffic Counts (Vehicles per Day)

COMMERCE DRIVE	1,889
SCHOFIELD AVENUE	8,790
HIGHWAY 29	15,763

## About Weston Business & Technology Park

Located on State Highway 29, the four-lane connection between Green Bay and Minneapolis that serves over 35,000 cars per day, the Weston Business & Technology Park is equipped with the latest technology to make your business a success. The 250+ campus setting boasts high-speed & wireless internet, T1 and ADSL phone lines, three-phase power and enough water & sewer capacity for most modern enterprises. In addition, the park has been designed with double-wide roads and ample turning radii to handle all of your transportation needs.

The business park is zoned for both manufacturing and commercial purposes and is currently home to industry leaders in metal & tube fabrication, laser technology, office furniture, interior doors, dental supplies amid cabinetry. Entrepreneurship abounds as four of our current tenants hold significant patents in their respective fields.

## NON-RESIDENTIAL CUSTOMERS

# STATE OF WISCONSIN BROKER DISCLOSURE



Wisconsin law requires all real estate licensees to give the following information about brokerage services to prospective customers.

**Prior to negotiating on your behalf the Brokerage firm, or an agent associated with the firm, must provide you the following disclosure statement.**

### Disclosure to Customers

You are a customer of NAI Pfefferle (hereinafter Firm). The Firm is either an agent of another party in the transaction or a subagent of another firm that is the agent of another party in the transaction. A broker or a salesperson acting on behalf of the Firm may provide brokerage services to you. Whenever the Firm is providing brokerage services to you, the Firm and its brokers and salespersons (hereinafter Agents) owe you, the customer, the following duties:

- The duty to provide brokerage services to you fairly and honestly.
- The duty to exercise reasonable skill and care in providing brokerage services to you.
- The duty to provide you with accurate information about market conditions within a reasonable time if you request it, unless disclosure of the information is prohibited by law.
- The duty to disclose to you in writing certain Material Adverse Facts about a Property, unless disclosure of the information is prohibited by law.
- The duty to protect your confidentiality. Unless the law requires it, the Firm and its Agents will not disclose your confidential information or the confidential information of other parties.
- The duty to safeguard trust funds and other property held by the Firm or its Agents.
- The duty, when negotiating, to present contract proposals in an objective and unbiased manner and disclose the advantages and disadvantages of the proposals.

Please review this information carefully. An Agent of the Firm can answer your questions about brokerage services, but if you need legal advice, tax advice, or a professional home inspection, contact an attorney, tax advisor, or home inspector. This disclosure is required by section 452.135 of the Wisconsin statutes and is for information only. It is a plain-language summary of the duties owed to a customer under section 452.133(1) of the Wisconsin statutes.

### Confidentiality Notice to Customers

The Firm and its Agents will keep confidential any information given to the Firm or its Agents in confidence, or any information obtained by the Firm or its Agents that a reasonable person would want to be kept confidential, unless the information must be disclosed by law or you authorize the Firm to disclose particular information. The Firm and its Agents shall continue to keep the information confidential after the Firm is no longer providing brokerage services to you.

*No representation is made as to the legal validity of any provision or the adequacy of any provision in any specific transaction.*

The following information is required to be disclosed by law:

1. Material Adverse Facts, as defined in section 452.01(5g) of the Wisconsin Statutes (see definition below).
2. Any facts known by the Firm or its Agents that contradict any information included in a written inspection report on the property or real estate that is the subject of the transaction.

To ensure that the Firm and its Agents are aware of what specific information you consider confidential, you may list that information below or provide that information to the Firm or its Agents by other means. At a later time, you may also provide the Firm or its Agents with other information you consider to be confidential.

### CONFIDENTIAL INFORMATION

### NON-CONFIDENTIAL INFORMATION

(the following information may be disclosed to the Firm and its Agents)

(Insert information you authorize to be disclosed, such as financial qualification information.)

### Definition of Material Adverse Facts

A "Material Adverse Fact" is defined in Wis. Stat. 452.01(5g) as an Adverse Fact that a party indicates is of such significance, or that is generally recognized by a competent licensee as being of such significance to a reasonable party, that it affects or would affect the party's decision to enter into a contract or agreement concerning a transaction or affects or would affect the party's decision about the terms of such a contract or agreement.

An "Adverse Fact" is defined in Wis. Stat. 452.01(1e) as a condition or occurrence that a competent licensee generally recognizes will significantly and adversely affect the value of the property, significantly reduce the structural integrity of improvements to real estate, or present a significant health risk to occupants of the property; or information that indicates that a party to a transaction is not able to or does not intend to meet his or her obligations under a contract or agreement made concerning the transaction.

### Notice About Sex Offender Registry

You may obtain information about the sex offender registry and persons registered with the registry by contacting the Wisconsin Department of Corrections on the Internet at <http://www.doc.wi.gov> or by telephone at 608-240-5830.