



## ELMWOOD PROFESSIONAL CENTER

1580 Elmwood Ave, Rochester, NY 14620



### JARED PETRICHICK

Leasing & Tenant Relations

(585) 236-7070

[jpetrichick@buckprop.com](mailto:jpetrichick@buckprop.com)

### SQUARE FOOTAGE

2,296 SF Available

### ABOUT THE SPACE

This beautiful first-story medical/office suite features a conference room, kitchenette, private restroom, five private offices and a storage room. The building currently contains of a handful of well-established medical offices.

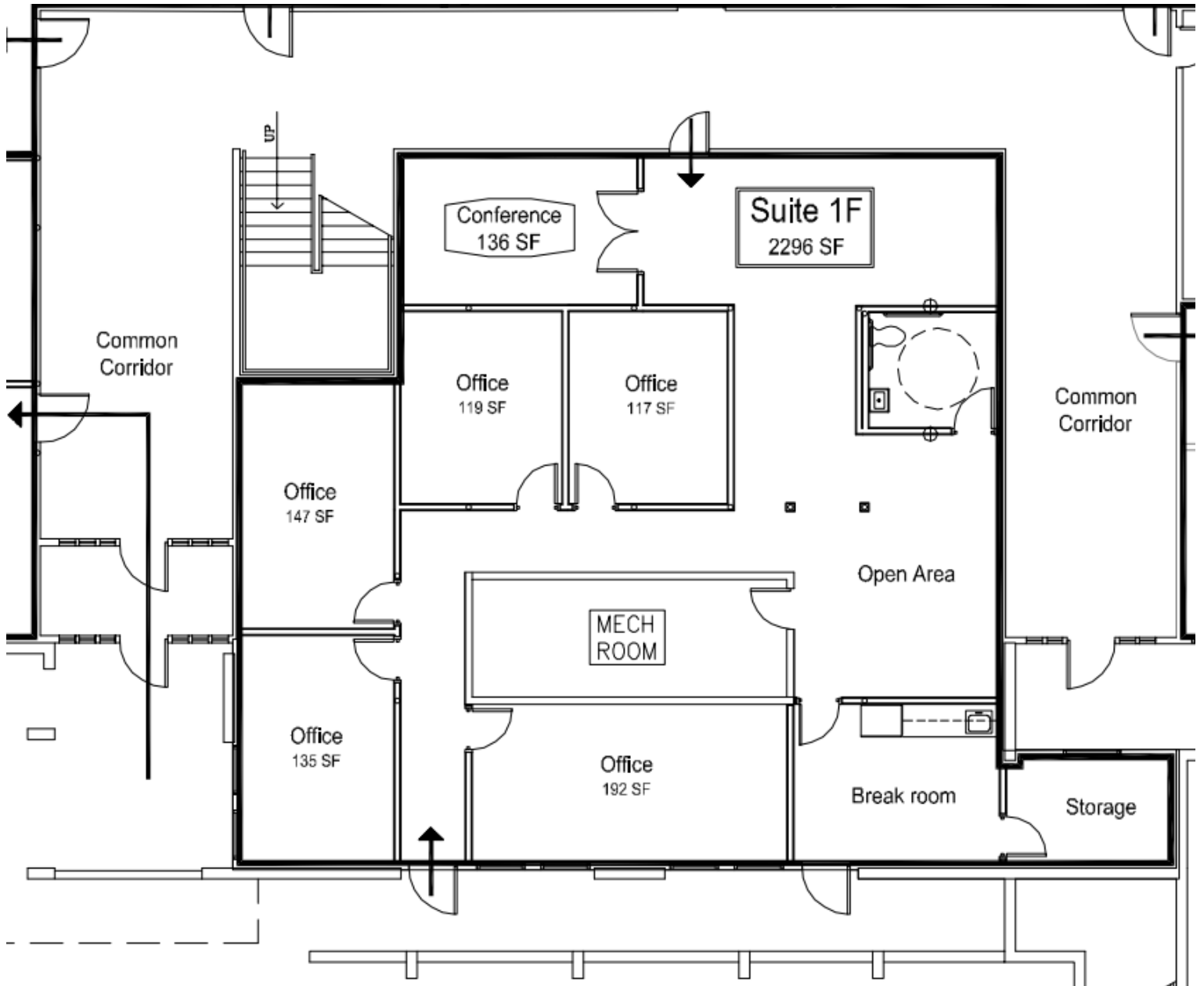


BUCKINGHAM PROPERTIES

(585) 295-9500 | [www.buckprop.com](http://www.buckprop.com) | 259 Alexander Street, Rochester, NY

# ELMWOOD PROFESSIONAL CENTER

1580 Elmwood Ave, Rochester, NY 14620



BUCKINGHAM PROPERTIES