

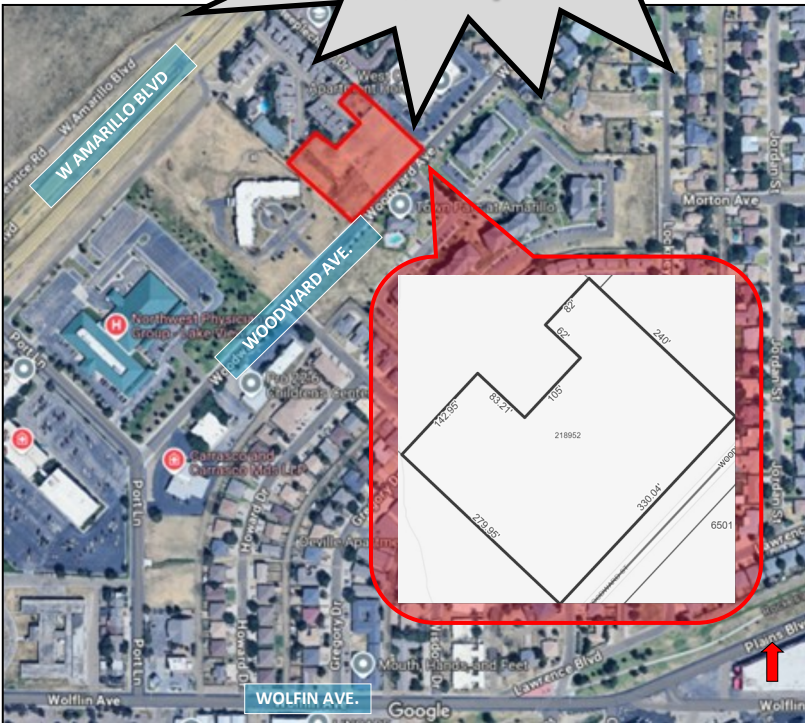
WOODWARD AVENUE

LAND FOR SALE OR BUILD TO SUIT

AMARILLO, TEXAS



**ONLY
\$10/SF!**



PRICE: \$818,928 (\$10/SF)
FOR SALE OR BUILD TO SUIT

SIZE: 1.88 ACRES

ZONING: PLANNED
DEVELOPMENT (PD)/
MULTI-FAMILY (MF1)

- JOINT VENTURE DEVELOPMENT OPPORTUNITY AVAILABLE!
- NEAR HARRINGTON REGIONAL MEDICAL CENTER
- NEAR GROCERY, BANKING AND RESTAURANTS



HARRINGTON REGIONAL
MEDICAL CENTER

STEEPLECHASE
CONDOS

1.88 ACRES

WOODWARD
AVE.



PAT DAVIS, BROKER

806-355-7200, option 4

806-679-7907

pat@patdavisproperties.com



DONNA SIMS, REALTOR®

806-355-7200, option 5

806-678-9098

donna@patdavisproperties.com



LEW BRADSHAW

MARKETING & BUSINESS DEVELOPMENT

806-355-7200, option 3

806-674-7716

lew@patdavisproperties.com