

DATA

BLDG. AREA 61390

PARKING

RETAIL $3000/30 = 10SP$

REST. $313/100 = 31SP$

41SP

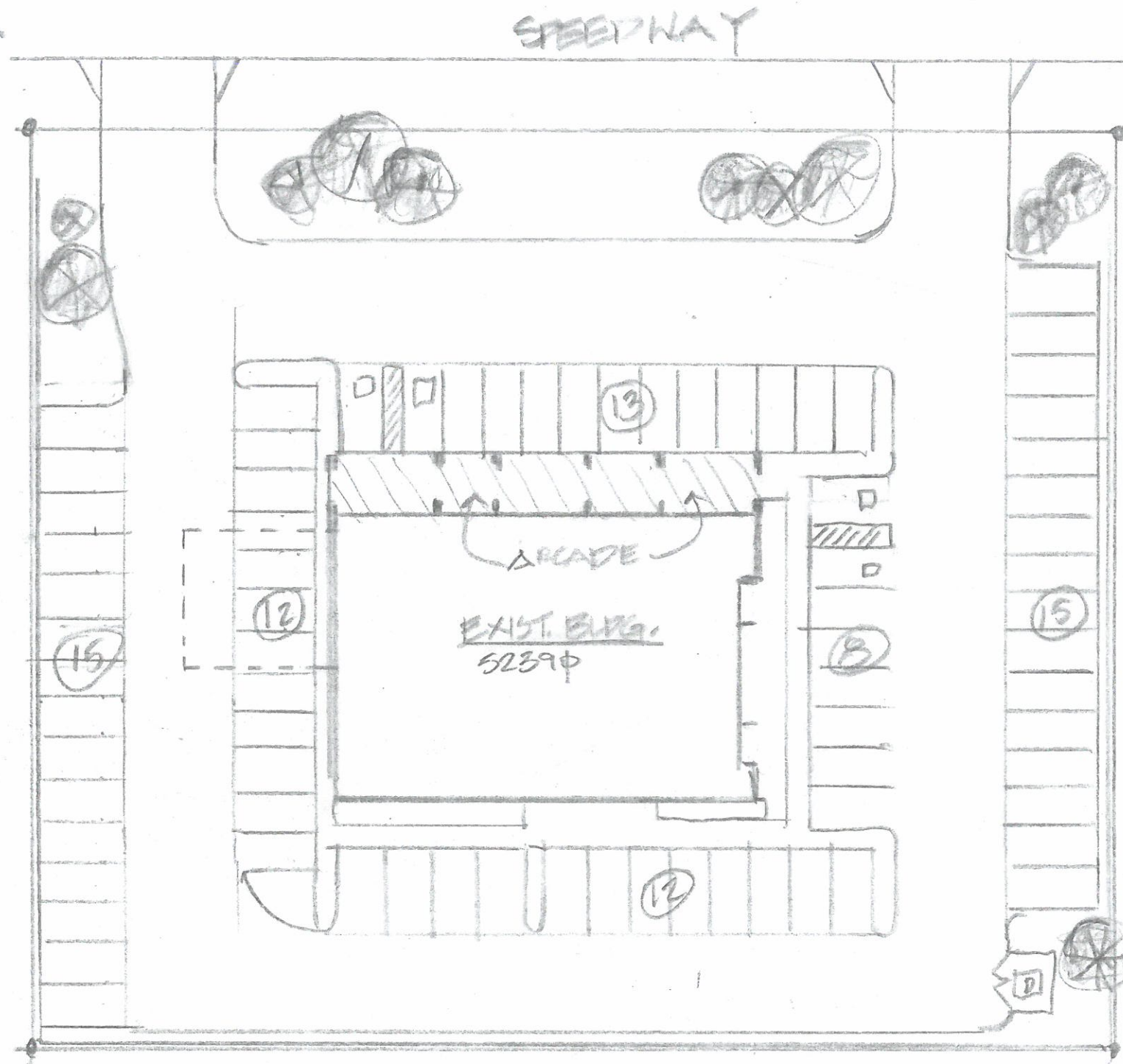
PROV. 58SP

SCHEME A

11.30



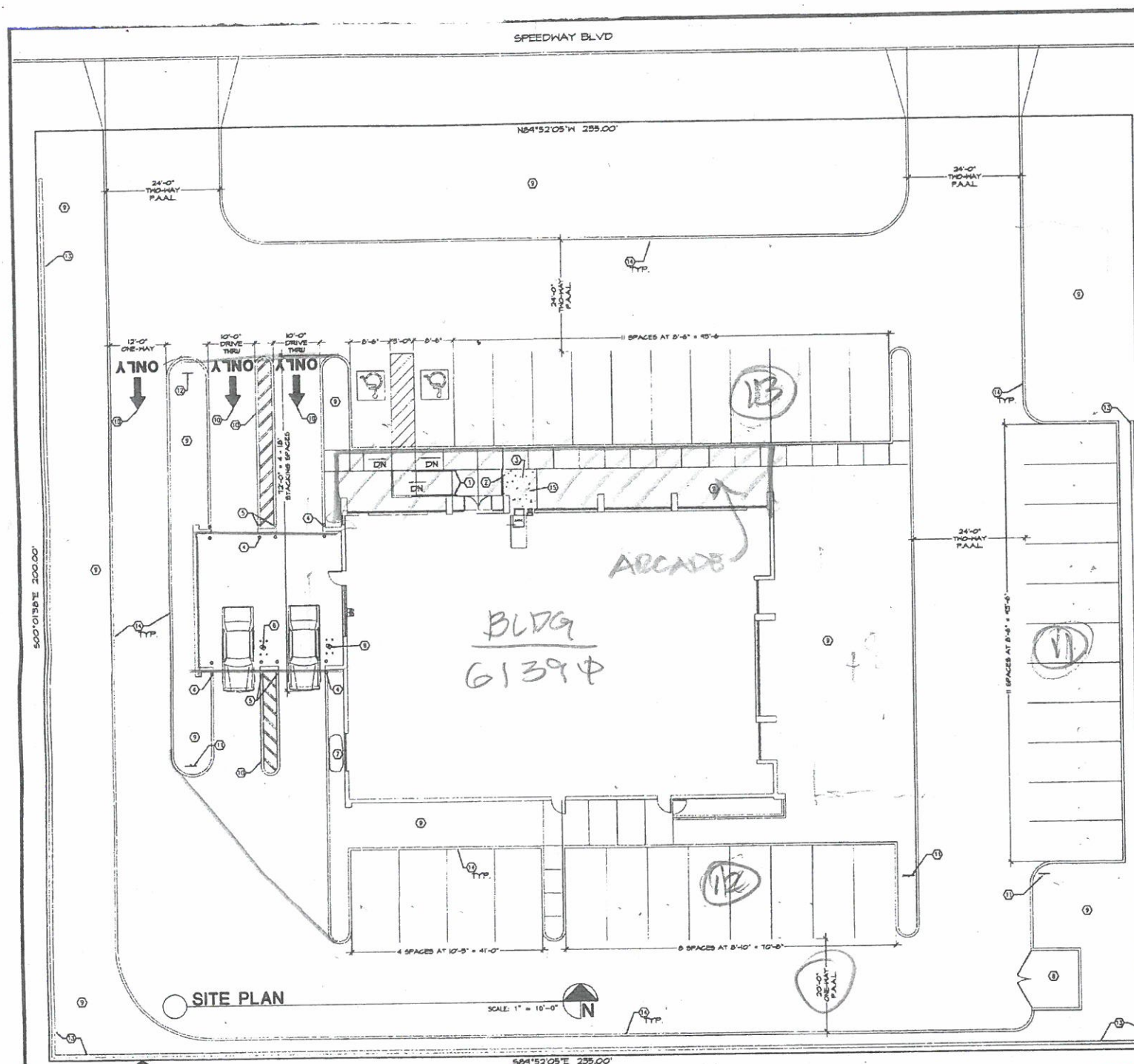
 EGLIN+BRESLER
ARCHITECTS
3492-22 8.3.22



DATA
 BUDGET AREA 5289
PARKING
 REST. YARD = 53 SP.
 POOL 75 SP.

SCHEME B. 
 1:30


**EGLIN+BRESLER
 ARCHITECTS**
 3192-22 8.3.22



- KEYNOTES:**
1. NEW METAL HAND RAIL, SEE DETAIL 23/AS.
 2. NEW METAL GUARD RAIL, SEE DETAIL 24/AS.
 3. NEW 4" CONCRETE SLAB, MAINTAIN SLOPE AWAY FROM BUILDING & MATCH ELEVATION AT EXISTING SIDEWALK.
 4. NEW 6" BOLLARD, SEE DETAIL 25/AS, PAINT TO MATCH EXISTING.
 5. EXISTING BOLLARD TO REMAIN.
 6. NEW DRIVE-THRU TELLER EQUIPMENT.
 7. EXISTING SIGN TO BE REMOVED.
 8. EXISTING TRASH ENCLOSURE TO REMAIN.
 9. EXISTING LANDSCAPE TO REMAIN.
 10. NEW 4" HIDE PAINTED TRAFFIC CONTROL MARKERS.
 11. NEW SIGN "ONE-WAY DO NOT ENTER".
 12. NEW SIGN "ONE-WAY ONLY".
 13. EXISTING HOOKERY SITE HALL TO REMAIN.
 14. EXISTING CURB TO REMAIN.
 15. REMOVE EXISTING LANDSCAPE IN AREA OF NEW CONCRETE HALL. REPAIR EXISTING IRRIGATION SYSTEM TO MAINTAIN SYSTEM INTEGRITY.

DATA

RETAIL - 6139' ϕ
 PARKING (RETAIL)
 REQ 6139/300 = 21SP
 PRV. ϕ 61' 36SP
 REQ. 2139' ϕ REST = 21SP
 4000 REQ = 139'
 349'

SCHEME 'C'

CITY OF FLORIDA
 DEVELOPMENT SERVICES CENTER
 TOWN OF PALM BEACH

This set of plans and specifications shall be of full force and effect only if approved by the City of Palm Beach. It is intended to be used as a guide only and shall not be construed as a contract. The drawings of this plan and specification shall not be held to account or to be approved of the violation of any ordinance of the City of Palm Beach or State Law.

NO.	DATE	BY	REVISION

1:30

EGLIN+BRESLER ARCHITECTS
 3192-22 B322