



+/- 9.22 Acres
Land For Sale



1999 & 2301 Hammond Road Raleigh, NC 27610

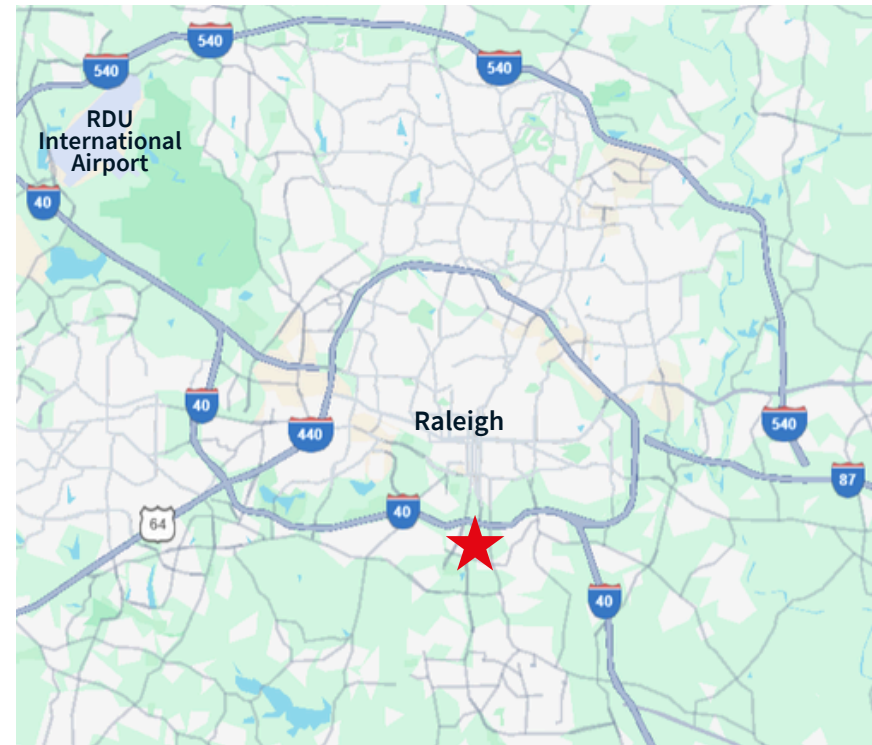
Property Details

Land Area 1702779329: +/- 7.51 Acres
1702882580: +/- 1.71 Acres

Location Located off of I-440 beltline approximately 16.9 miles from RDU Airport.

Zoning IX-3-SHOD-2

Approved Development Plans Proposed 8 buildings, totaling 56,560 sf. for light industrial uses approved until December 1, 2026



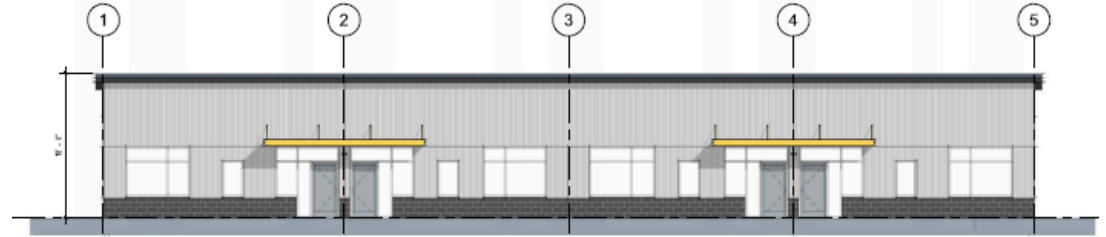
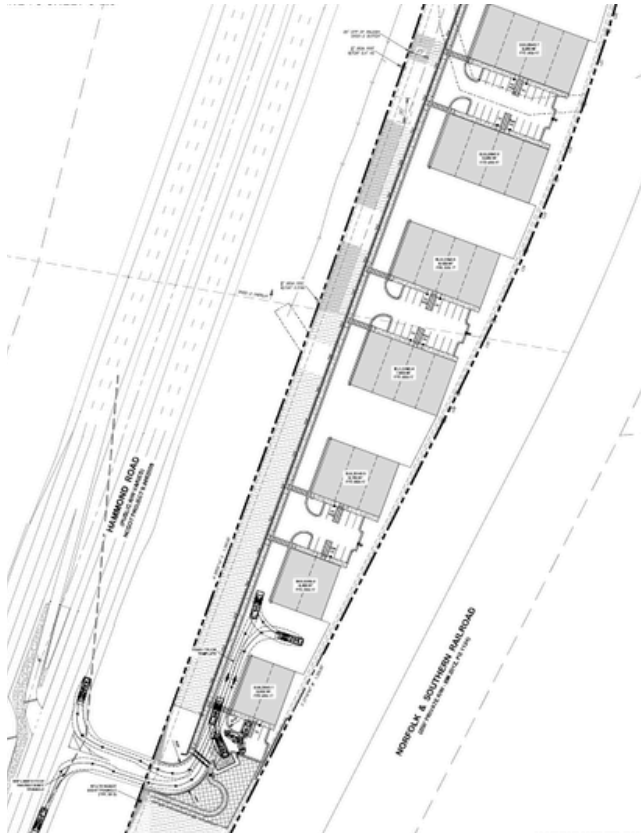
Al Williams
Managing Director
919.424.8154
al.williams@jll.com

Justin Booth
Senior Vice President
919.424.8464
justin.booth@jll.com

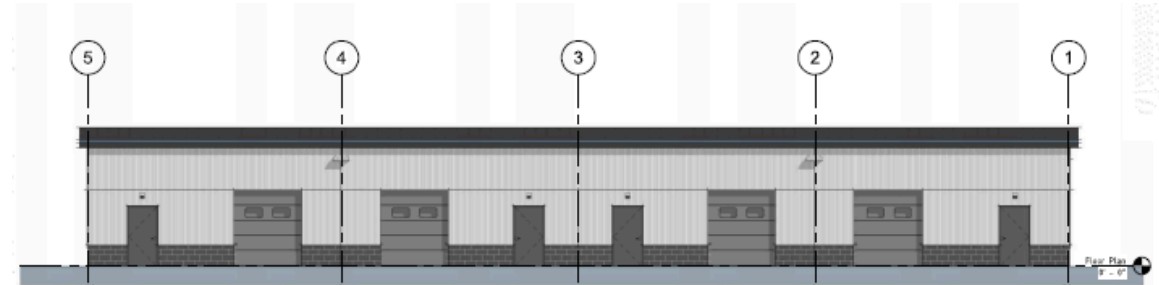
Austin Jackson
Associate
919.424.8456
austinp.jackson@jll.com

+/- 9.22 Acres

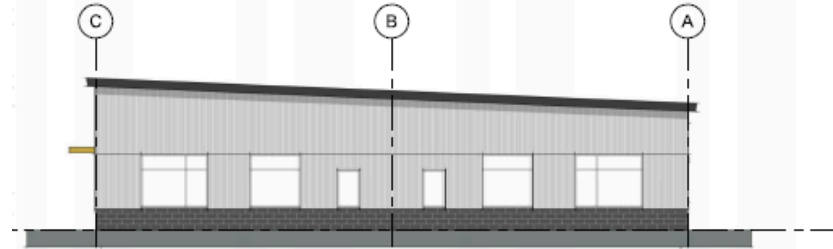
Land For Sale



1 South
SCALE: 1/8" = 1'-0"



4 North
SCALE: 1/8" = 1'-0"



3 East
SCALE: 1/8" = 1'-0"

*Proposed plan for light industrial uses approved until December 1, 2026

JLL

Al Williams
Managing Director
919.424.8154
al.williams@jll.com

Justin Booth
Senior Vice President
919.424.8464
justin.booth@jll.com

Austin Jackson
Associate
919.424.8456
austinp.jackson@jll.com

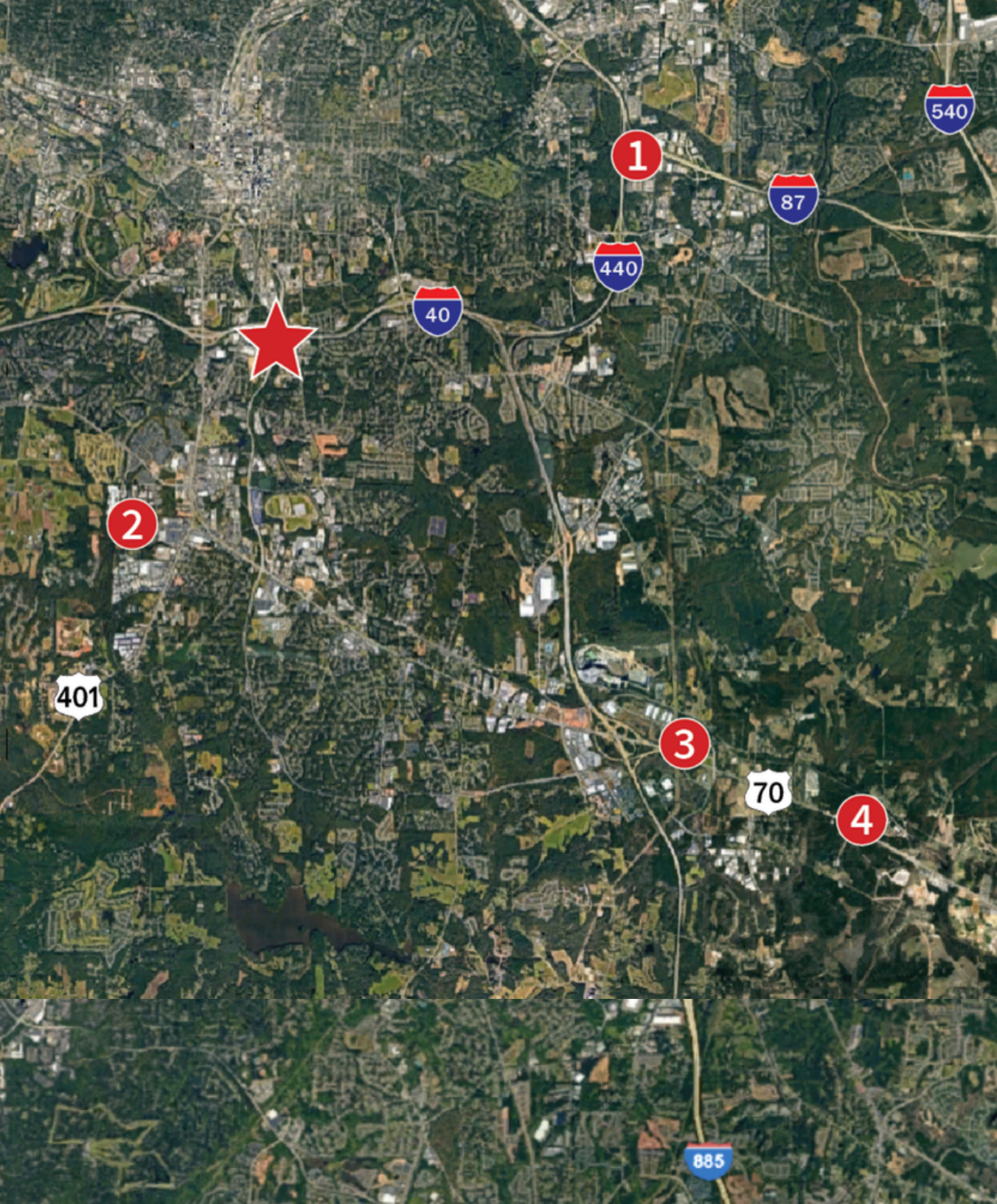
Site Plan
Conceptual Site Plan:
8 Buildings, totaling 56,560 SF

Although information has been obtained from sources deemed reliable, JLL does not make any guarantees, warranties or representations, express or implied, as to the completeness or accuracy as to the information contained herein. Any projections, opinions, assumptions or estimates used are for example only. There may be differences between projected and actual results, and those differences may be material. JLL does not accept any liability for any loss or damage suffered by any party resulting from reliance on this information. If the recipient of this information has signed a confidentiality agreement with JLL regarding this matter, this information is subject to the terms of that agreement.
©2023. Jones Lang LaSalle IP, Inc. All rights reserved.



Accessibility





Surrounding Industrial Developments

-  **1999 & 2301 Hammond Road**

- 1** **Walnut Creek Business Park**

- 2** **Lincoln Park South**

- 3** **Greenfield Business Park**

- 4** **Garner Business Park**