

LOVES PARK CROSSINGS OUTLOT

1521 E RIVERSIDE BLVD
LOVES PARK, IL 61111

FOR LEASE: 1,523-1,598 SF



Property Information

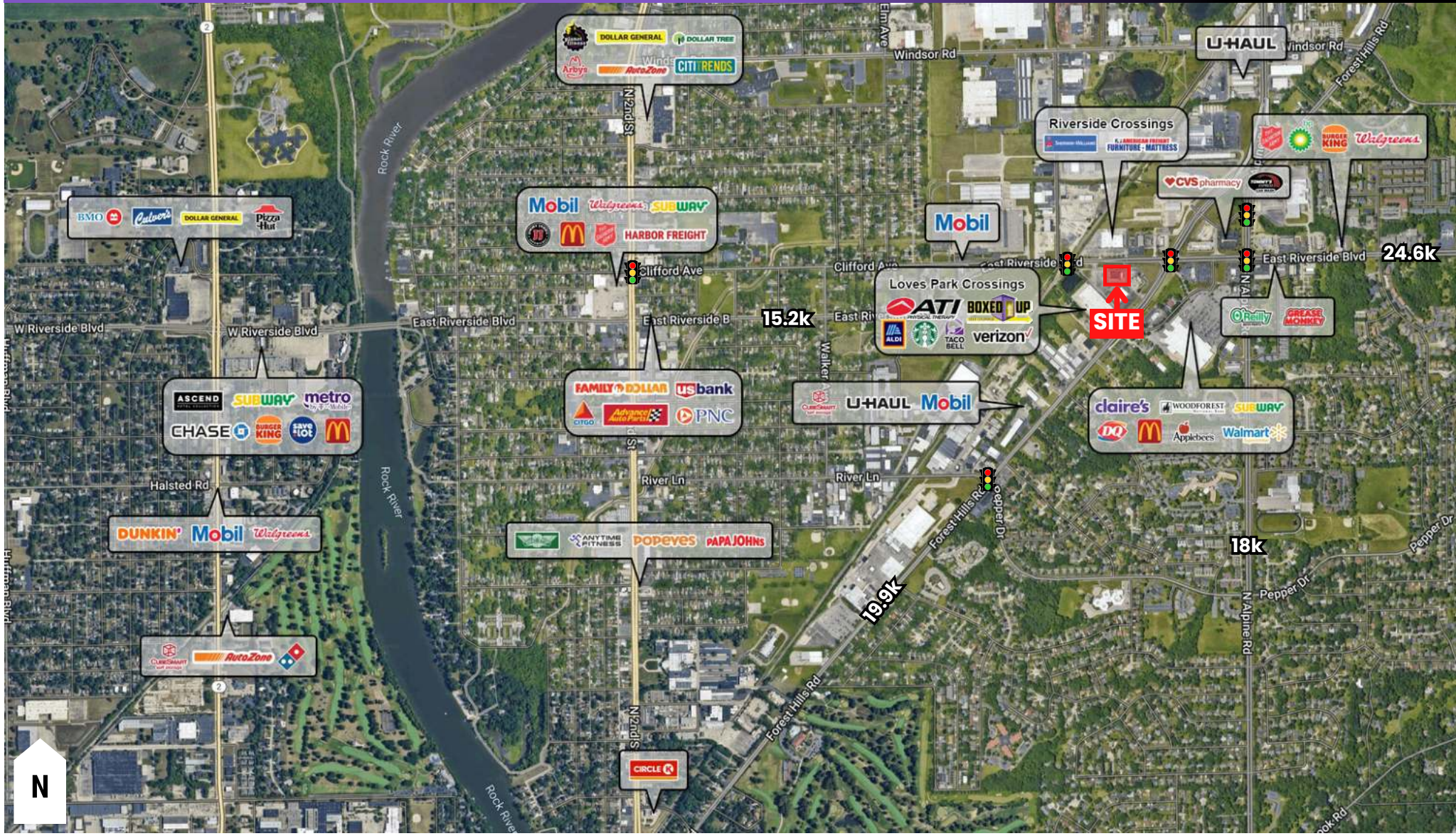
- Located in the Heart of Loves Park's Shopping Corridor
- Superior visibility along two of the busiest streets in the Loves Park area
- High Traffic Area - Over 40,000 VPD pass through Riverside and Forest Hills Intersection
- Only 2.5 Miles from I-90
- Building Signage Available

Demographics

	Population	Average Household Income	Businesses
1 Mile:	8,177	\$104,603	385
3 Miles:	67,766	\$115,600	2,115
5 Miles:	157,164	\$102,599	5,841

AERIAL | 1521 E RIVERSIDE BLVD, LOVES PARK, IL 61111

HIGH TRAFFIC AREA - 24.6K VPD

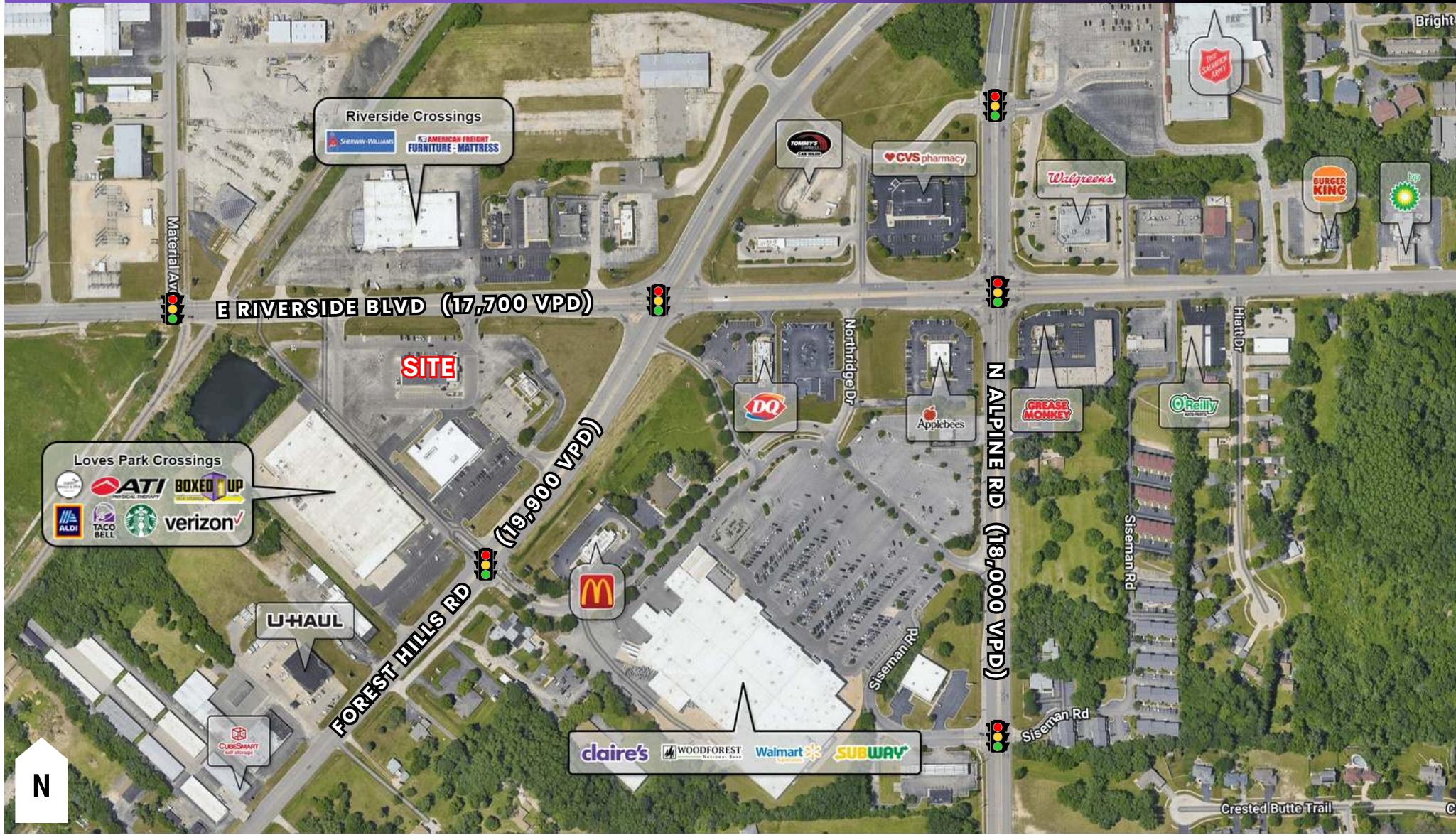


The inclusion of names or logos on this exhibit which depict any occupant other than tenants are for artistic purpose only. May not be to scale. They do not constitute a representation or warranty as to any existing or on-going tenancies. FMG and the FMG Logo are service marks of FMG, Inc., and/or its affiliated or related companies in the United States and other countries. All other marks displayed on this document are the property of their respective owners.



SITE SURVEY | 1521 E RIVERSIDE BLVD, LOVES PARK, IL 61111

SITUATED NEAR TRAFFIC SIGNALS



The inclusion of names or logos on this exhibit which depict any occupant other than tenants are for artistic purpose only. May not be to scale. They do not constitute a representation or warranty as to any existing or on-going tenancies. FMG and the FMG Logo are service marks of FMG, Inc., and/or its affiliated or related companies in the United States and other countries. All other marks displayed on this document are the property of their respective owners.



815-229-3000



leasing@firstmidwestgroup.com

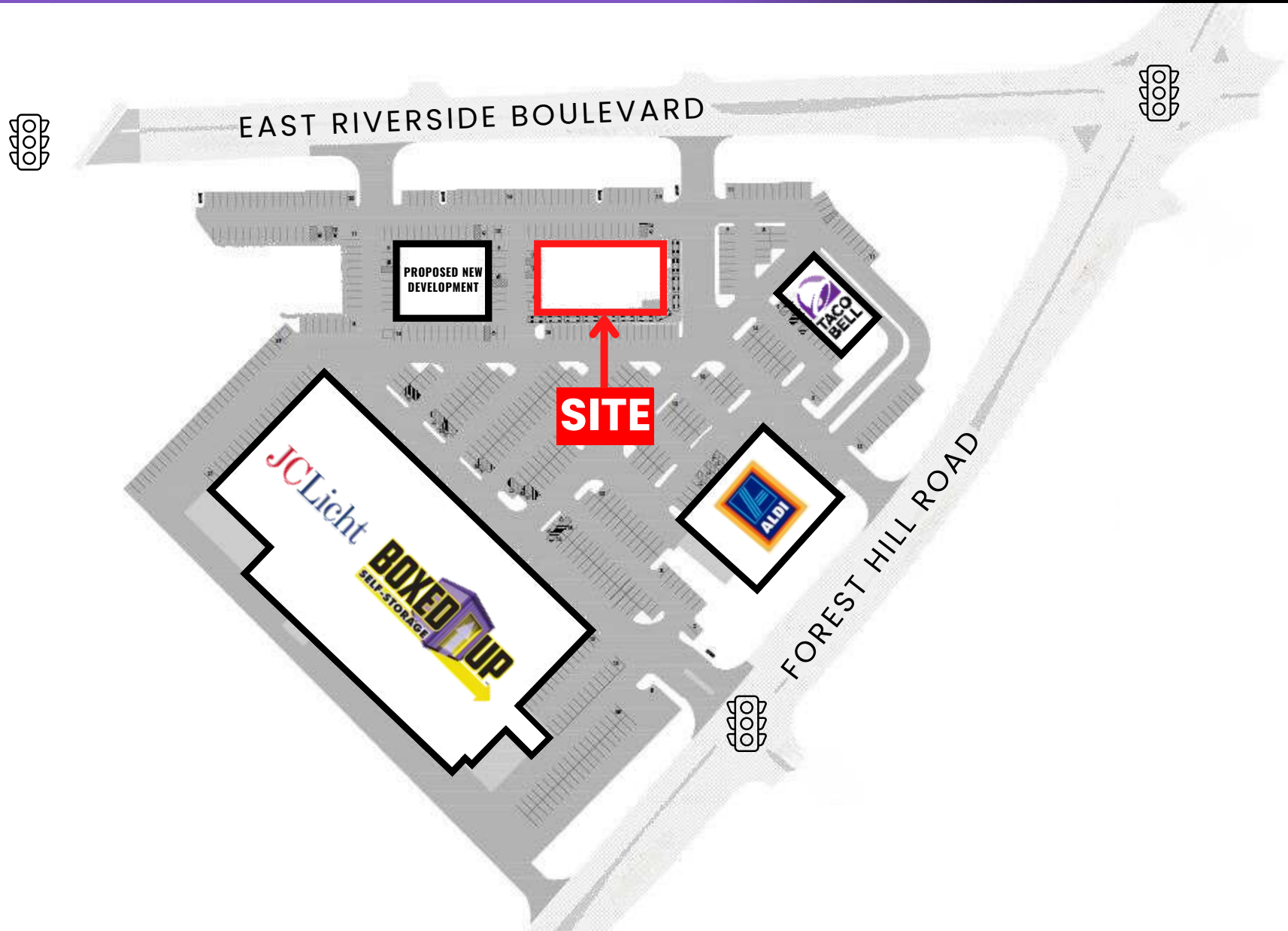


6801 Spring Creek Road, Rockford, IL 61114



SITE PLAN | 1521 E RIVERSIDE BLVD, LOVES PARK, IL 61111

SITE PLAN WITH PROPOSED DEVELOPMENT



815-229-3000



leasing@firstmidwestgroup.com



6801 Spring Creek Road, Rockford, IL 61114

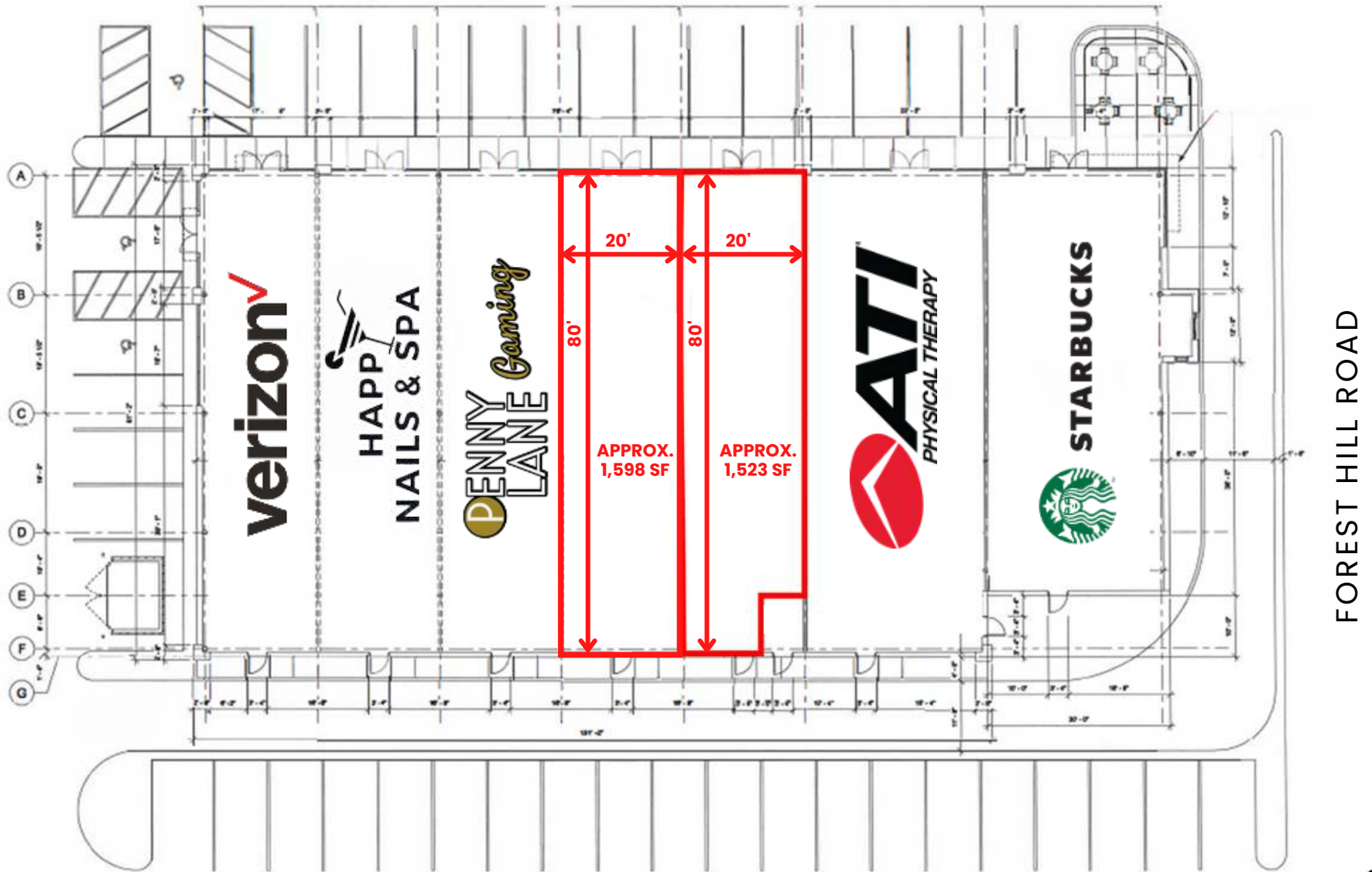


First Midwest Group

SITE PLAN | 1521 E RIVERSIDE BLVD, LOVES PARK, IL 61111

EXISTING SITE PLAN

FOREST HILL ROAD



815-229-3000



leasing@firstmidwestgroup.com



6801 Spring Creek Road, Rockford, IL 61114



First Midwest Group

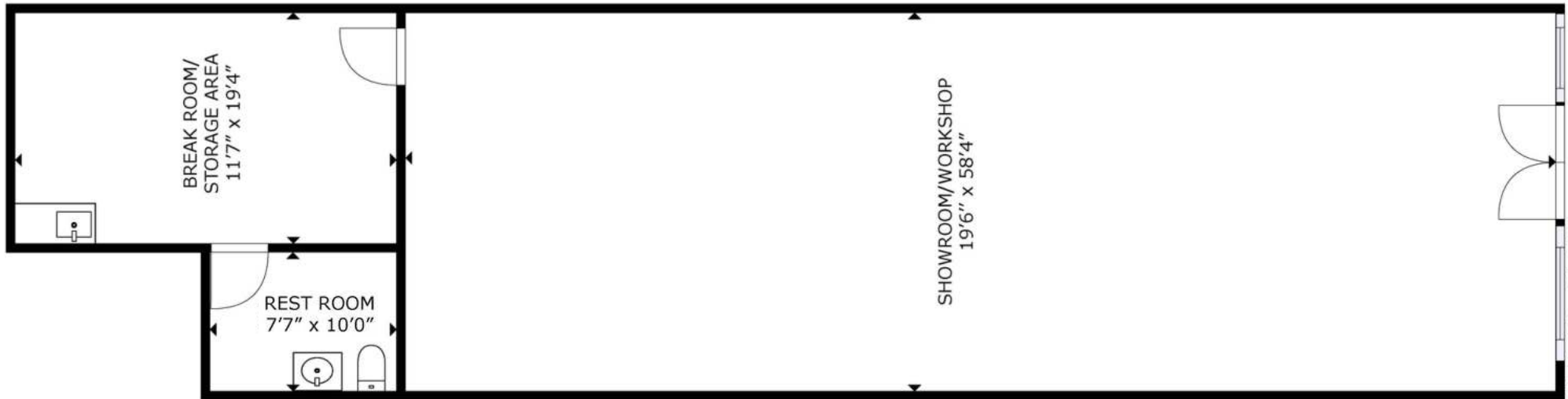
FLOOR PLAN | 1521 E RIVERSIDE BLVD, LOVES PARK, IL 61111

FLOOR PLAN: SUITE 3 - 1,523 SF

**APPROX.
1,523 SF**



**CLICK TO VIEW
VIRTUAL TOUR**



815-229-3000



leasing@firstmidwestgroup.com



6801 Spring Creek Road, Rockford, IL 61114



First Midwest Group

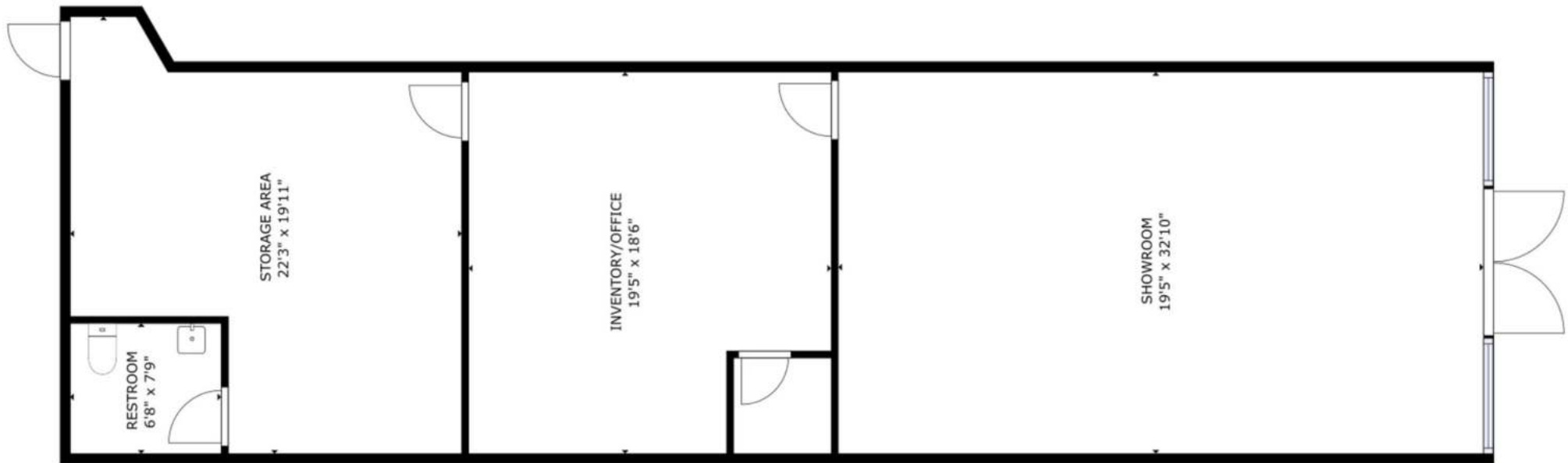
FLOOR PLAN | 1521 E RIVERSIDE BLVD, LOVES PARK, IL 61111

FLOOR PLAN: SUITE 4 - 1,598 SF

**APPROX.
1,598 SF**



**CLICK TO VIEW
VIRTUAL TOUR**



815-229-3000



leasing@firstmidwestgroup.com



6801 Spring Creek Road, Rockford, IL 61114



First Midwest Group