

issue dates

12 OCT 2005
 25 OCT 2005
 4 NOV 2005
 18 NOV 2005
 30 NOV 2005
 7 DEC 2005
 16 DEC 2005

copyright
 CMGARCHITECTS
 hereby reserves its common law
 copyright and other property
 rights in these plans, ideas and
 designs which are not to be
 reproduced or changed in any
 manner, nor are they to be
 assigned to a third party without the
 written permission of CMG
 Architects.

CMGArchitects

ARCHITECTURE
 LAND PLANNING
 DESIGN

18 MAIN STREET
 SUITE ONE
 BOSTON, MA 02129
 USA

TELEPHONE
 617.242.1400

INTERIOR STONE

187 Lexington Street
 Waltham, MA 02453

200.86

LOWER & UPPER
 FLOOR PLAN-
 RETAIL/ OFFICE

no. A-1


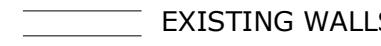


date

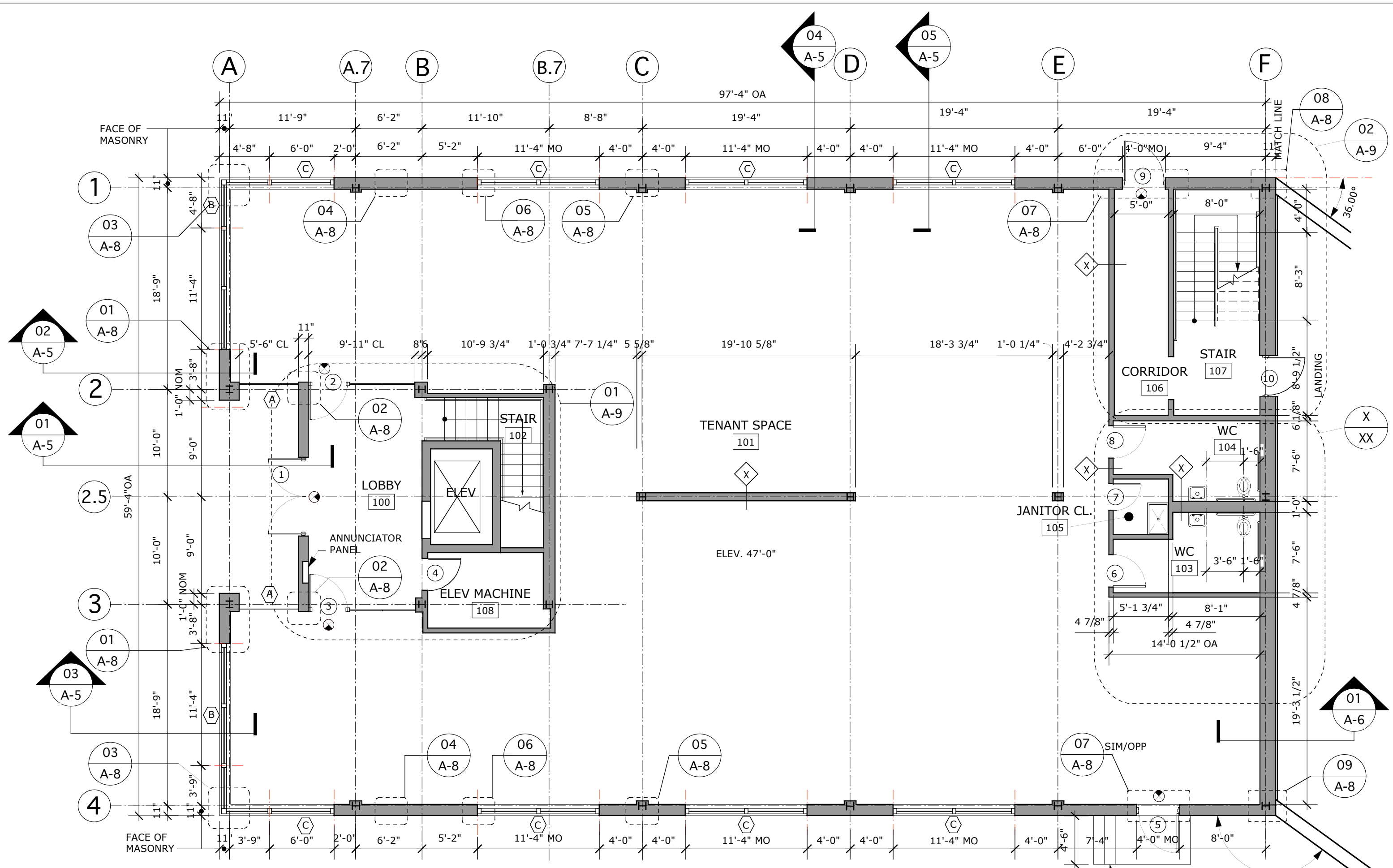
scale 1/8" = 1'-0"

drawn CP

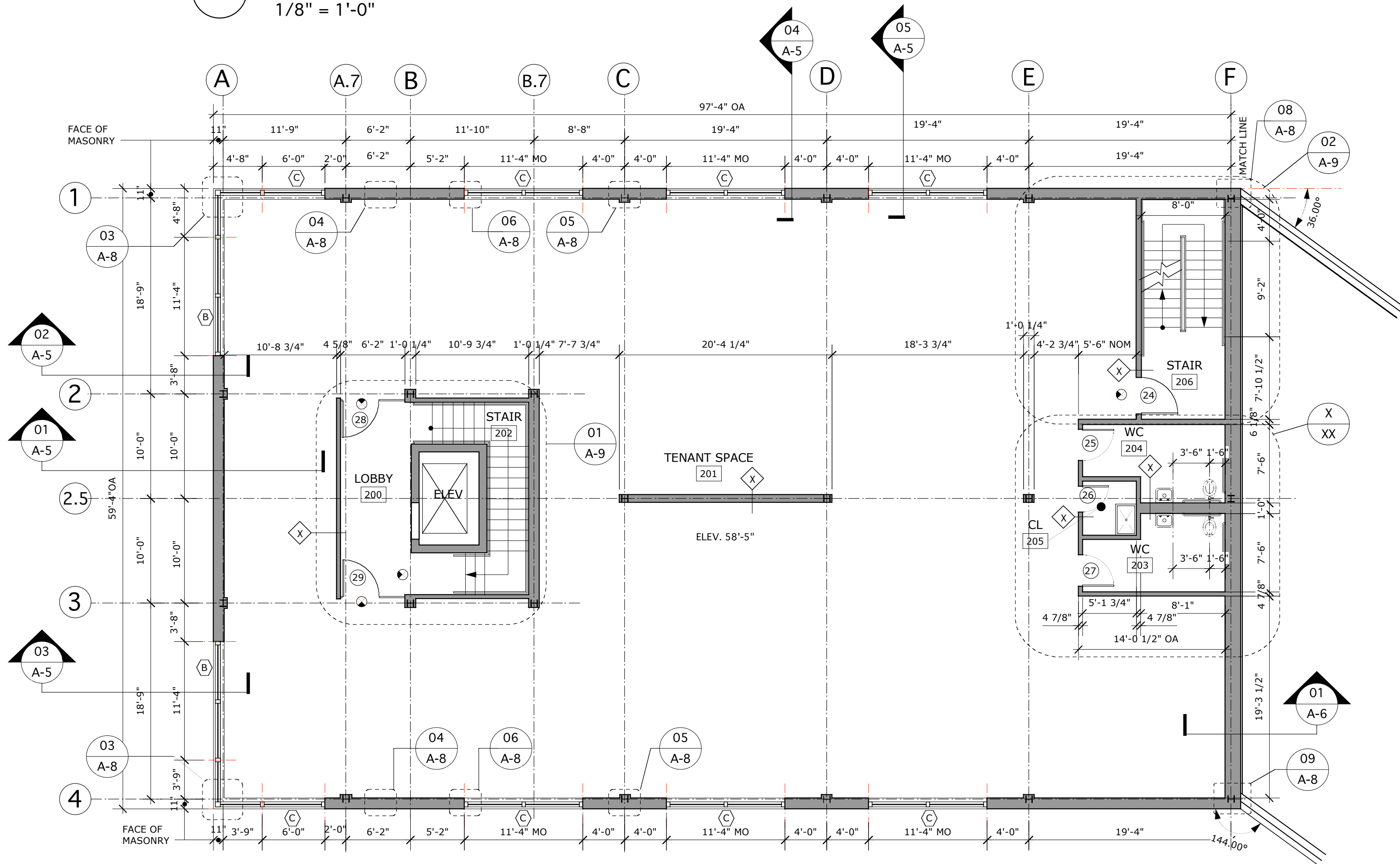
checked C.M.G.

SYMBOLS LEGEND

-  NEW WALLS
-  EXISTING WALLS
-  ILLUMINATED EXIT SIGNS
-  WALL TYPES



1 LOWER FLOOR PLAN
 1/8" = 1'-0"



2 UPPER FLOOR PLAN
 1/8" = 1'-0"