

850 W Jackson Street, Chicago, IL









V. COLLECTIVE™



Overview


- Brick & concrete creative loft office
- Size: 105,423 RSF
- Stories: 8
- Availability: 1,600 – 12,300 RSF

Amenities

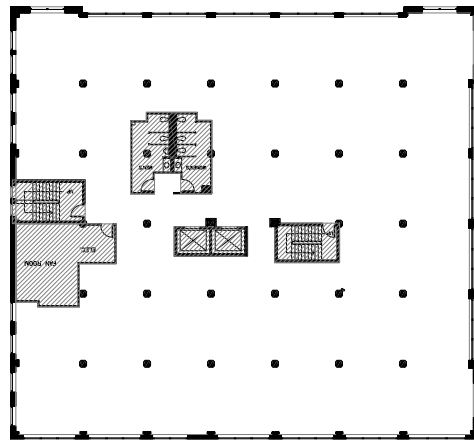
-  Modern, newly designed lobbies and kitchens
-  Stunning roof deck and tenant lounge
-  Brand new conference centers with best-in-class technology
-  On-site parking available for lease
-  Tenant-controlled air conditioning
-  Best-of-class community with multiple internet options and high-performance DAS
-  Bike parking & showers

Available Space

SF

<u>Suite 220</u>	1,644
<u>Suite 320</u>	1,765
<u>Suite 420</u>	2,520
<u>Suite 500</u>	12,257  Matterport™
<u>Suite 703</u>	2,997
<u>Suite 750</u>	6,320
<u>Suite 800</u>	8,496  Matterport™

Typical Floorplate | ±12,257 RSF



For more information, please contact:

Chris Cassata

+1 312 470 2300

Chris.Cassata@cushwake.com

Tessa Peabody

+1 312 971 0083

Tessa.Peabody@cushwake.com

