

19000 W. SEVEN MILE ROAD  
DETROIT, MICHIGAN



**SIGNATURE  
ASSOCIATES**  
KNOW SIGNATURE | KNOW RESULTS

RETAIL FOR SALE  
3,183 Square Feet Available



## PROPERTY FEATURES

- 3,183 available square feet
- Zoned B-4
- Ample parking
- 220 Volt, 3-Phase power
- (1) Overhead door
- Sale Price: \$125,000 (\$39.27/sq.ft.)



For more information, please contact:

**JOE STACK**  
(248) 359 0615  
jstack@signatureassociates.com

**CHRIS MONSOUR**  
(248) 948 0107  
cmonsour@signatureassociates.com

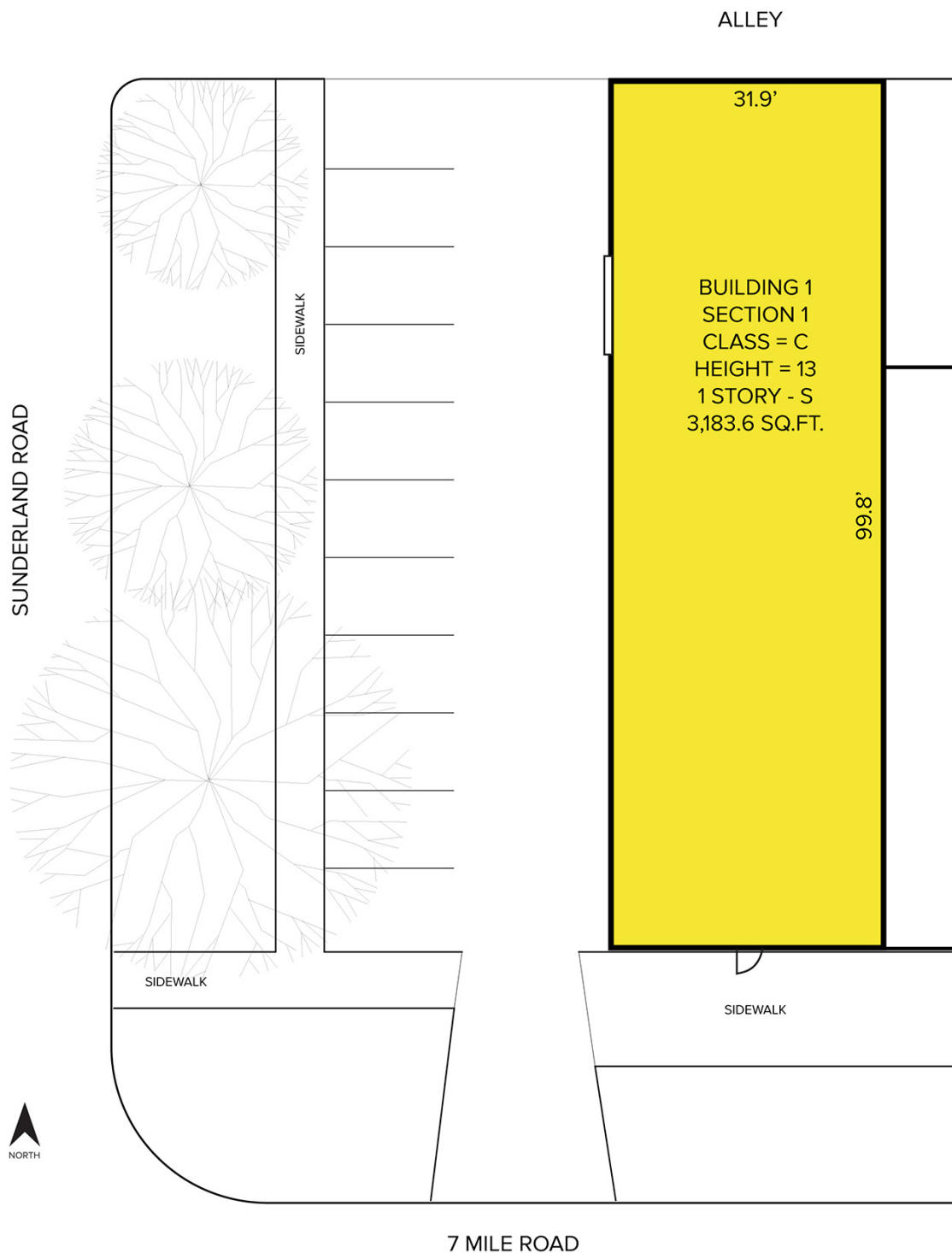
**SIGNATURE ASSOCIATES**  
One Towne Square, Suite 1200  
Southfield, MI 48076  
www.signatureassociates.com

# 19000 W. Seven Mile Road – Detroit, Michigan

Retail For Sale

3,183  
Square Feet  
AVAILABLE

## Site Plan



For more information, please contact:

**JOE STACK**  
(248) 359 0615  
jstack@signatureassociates.com

**CHRIS MONSOUR**  
(248) 948 0107  
cmonsour@signatureassociates.com

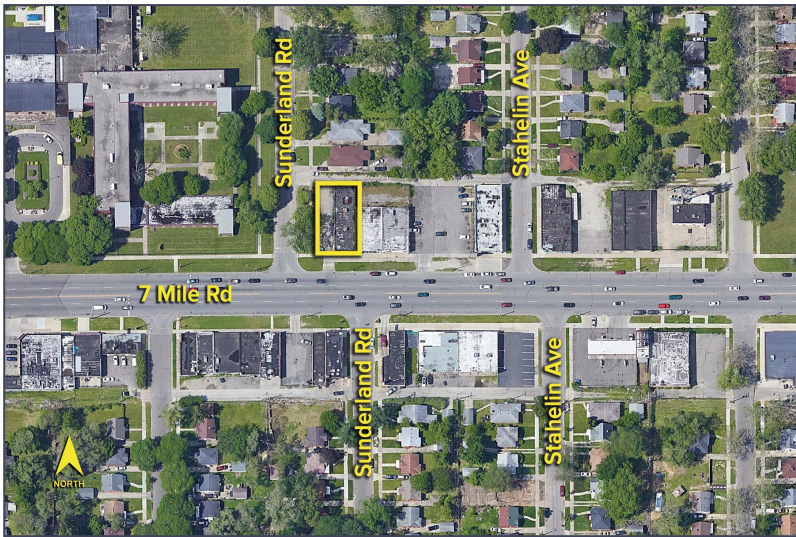
**SIGNATURE ASSOCIATES**  
One Towne Square, Suite 1200  
Southfield, MI 48076  
www.signatureassociates.com



# 19000 W. Seven Mile Road – Detroit, Michigan

Retail For Sale

3,183  
Square Feet  
AVAILABLE



## DEMOGRAPHICS

	POPULATION	MED. HH INCOME
1 MILE	18,753	\$33,954
3 MILE	137,653	\$41,014
5 MILE	349,536	\$48,076

## TRAFFIC COUNTS (TWO-WAY)

22,112	7 Mile W. of Southfield Fwy.
31,002	7 Mile E. of Southfield Fwy.
161,299	Southfield Fwy. N. of 7 Mile
131,517	Southfield Fwy. S. of 7 Mile



For more information, please contact:

**JOE STACK**  
(248) 359 0615  
jstack@signatureassociates.com

**CHRIS MONSOUR**  
(248) 948 0107  
cmonsour@signatureassociates.com

**SIGNATURE ASSOCIATES**  
One Towne Square, Suite 1200  
Southfield, MI 48076  
www.signatureassociates.com