

Sonrisa Office

FOR LEASE

3618 Williams Drive Suite 105
Georgetown, TX

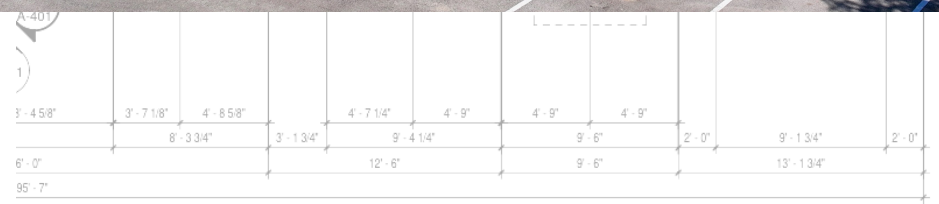
2,596 Square Feet

Executive summary

This office suite includes private executive suites, a conference room, an open bullpen area, a modern break room, and a patio. Located on Williams Drive, the property benefits from excellent frontage and visibility, with around 32,000 vehicles passing by daily. The suite features high-quality finishes throughout, including a kitchen with appliances. A virtual tour is available online or upon request.

Brittnee Gregoire
Listing Agent
Britt@HW-Companies.com
512-864-5620

Ken Mongold
Listing Broker
Ken@HW-Companies.com
512-763-4444



Sonrisa Office

FOR LEASE



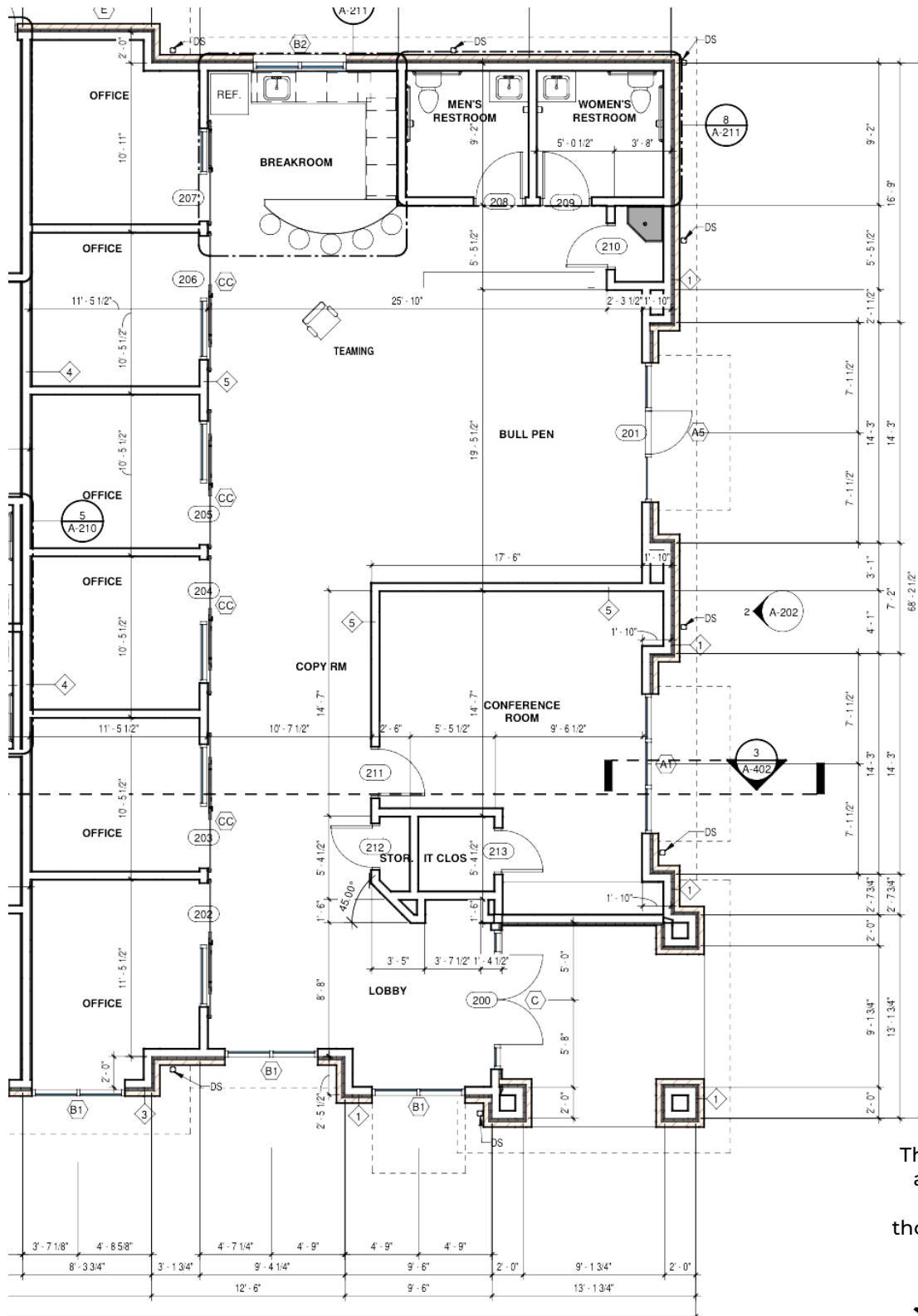


3618 Williams Drive Suite 105 Georgetown, TX

2,596 Square Feet

Lease Rate: \$25/SF
 NNN: \$11.95/SF includes security system

Custom built professional office with an abundance of natural light and high end features throughout. Built in 2021 with outdoor sitting area and private entrance.



The information contained herein has been obtained from the Owner and from other sources deemed reliable. No guarantee is made, and no liability or responsibility is assumed, for the accuracy or thoroughness of this information. The property is submitted subject to errors, omissions, changes in price or other terms, prior sale, prior lease, or withdrawal without notice.