



# FOR LEASE

## 167 EAST

1600-1800 NW 167TH PLACE  
BEAVERTON, OR 97006

+/-3,000-12,620 RSF

PLEASE CALL FOR RATES

JOSH BEAN, SIOR  
[josh@ecacre.com](mailto:josh@ecacre.com)

BRIAN HANSON, MREF  
[brian@ecacre.com](mailto:brian@ecacre.com)

503.205.0610



ETHOS COMMERCIAL ADVISORS LLC | 1111 NE FLANDERS ST, SUITE 201 | PORTLAND, OR 97232

These marketing materials do not constitute an offer to sell or lease, and do not constitute or contain promises, representations or warranties of any kind. The information in these marketing materials may contain approximations and images for illustration purposes. The owner, broker and their agents assume no risk or liability for inaccuracies, errors or omissions in these marketing materials. The terms and conditions of any transaction with respect to the property shall be contained exclusively in a written purchase and sale agreement or lease between the owner and the purchaser or tenant. Prospective purchasers or tenants should perform their own inspections of the property to verify its condition, permitted uses, and all other characteristics. | © 2025 Ethos Commercial Advisors LLC. All Rights Reserved. | 11.24.25

LICENSED IN OREGON, WASHINGTON, AND TEXAS

Situated just off US 26 and NW Cornell Road, 167 East business campus is part of one of Oregon's most rapidly growing areas, the Sunset Corridor. With surrounding neighbors such as Intel, Amazon, Nike, Columbia, and Genentech, 167 East has established itself as part of a network of highly sought after office and flex spaces for both established firms, as well as up-and-coming centers of innovative influence.

## LOCATION

Only a 15-minute drive from downtown Portland and a few miles from Tanasbourne District and shopping area, 167 East is well-suited for companies that are looking for an amenity-rich, easily-accessible location with direct access to service, housing, and transit networks.

## HIGHLIGHTS

- Located in the fast growing, high tech Sunset Corridor
- Ample 4:1,000 parking ratio
- Monument signage
- Locally owned and managed
- Immediate access to Highway 26 and Cornell Road, 15 miles to I-5 and Highway 217 interchange
- Extensive nearby amenities; walking distance to Tanasbourne Town Center

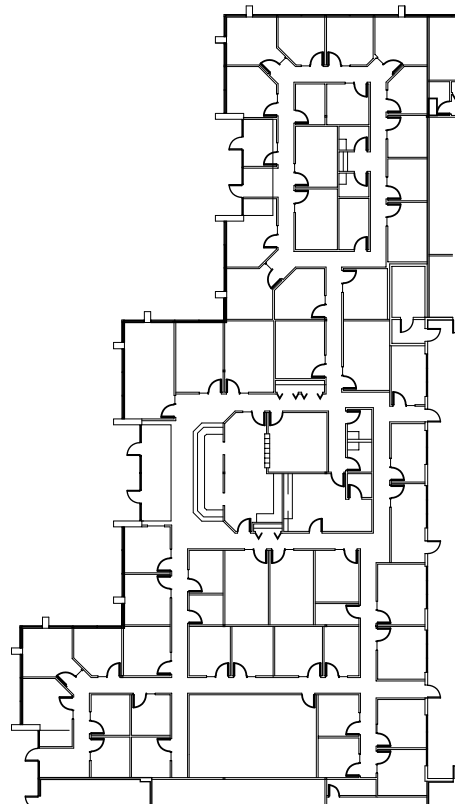


**Scenic tree-lined street  
and manicured  
landscaping  
throughout  
business campus**

**Free onsite  
parking with  
additional  
neighborhood  
parking available**

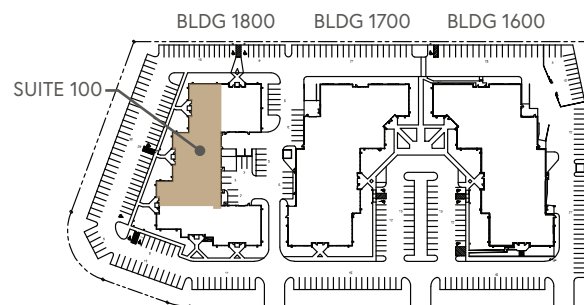
**Responsive,  
local property  
management**

# BUILDING 1800 | SUITE 100 | +/-3,000-12,620 RSF



- Heavy private office configuration
- Visible from NW Cornell Road

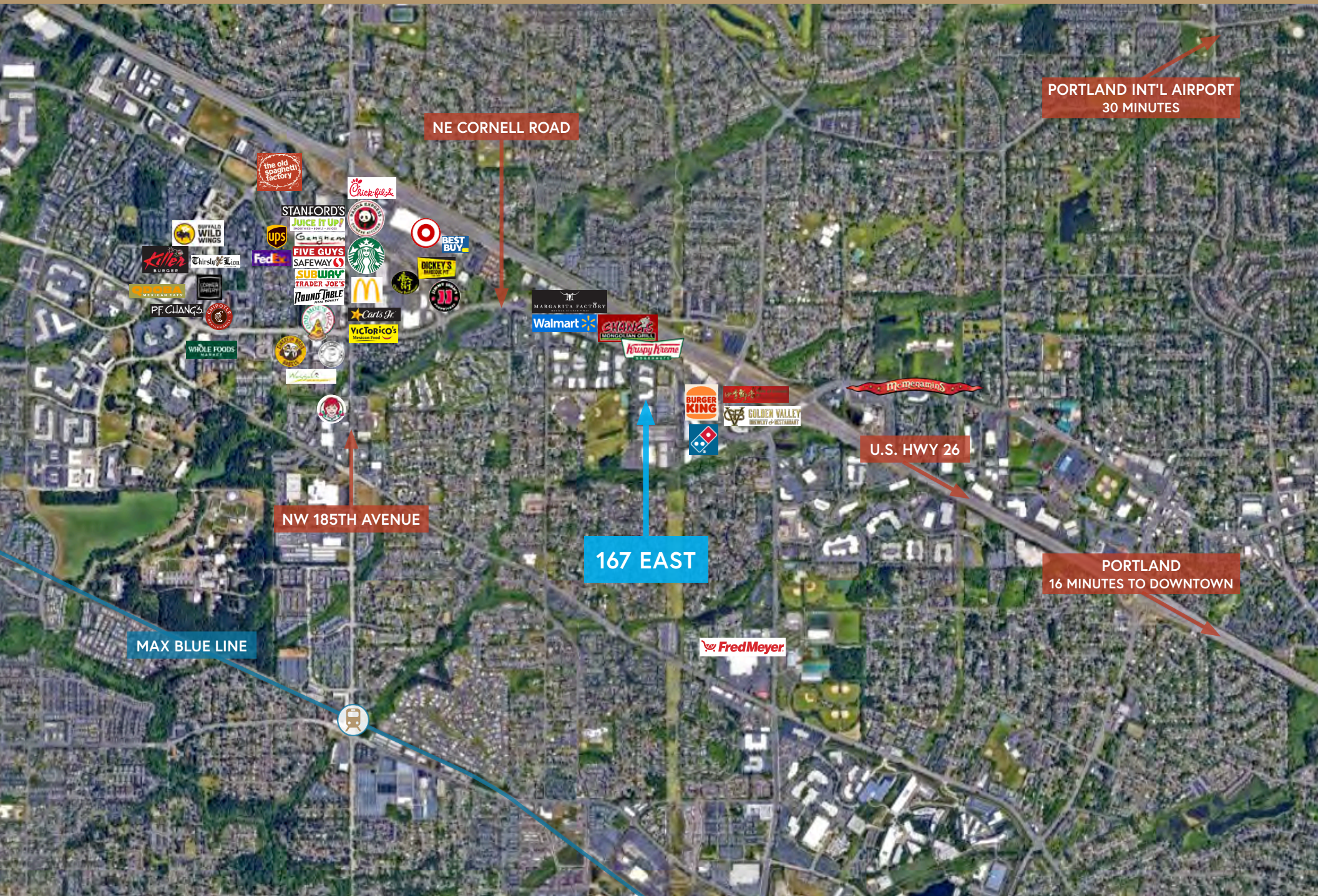
## AVAILABLE



SUITE PHOTOS  
COMING SOON







PORTLAND INT'L AIRPORT  
30 MINUTES

NE CORNELL ROAD

NW 185TH AVENUE

167 EAST

MAX BLUE LINE

U.S. HWY 26

PORTLAND  
16 MINUTES TO DOWNTOWN

Fred Meyer